



# State Budget Implementation

September, 2023

Content	Page
1. Brief	1
2. TOFE	2
3. Table of Ministry and Institution Spending	7
4. Note: Report preparation	9



## 1. Executive Summary of TOFE

In September 2023, the Budgetary Central Government (BCG) collected 1,704 billion riels in domestic revenue, equivalent to 6.58% of the 2023 annual budget law (BL), while its expenditure reached 2,251 billion riels, equivalent to 6.48% of the 2023 BL. **As a result, BCG's budget execution has a 547 billion riels deficit.** During the first nine months of 2023, BCG's domestic revenue collection achieved 18,488 billion riels, equivalent to 71.39% of the 2023 BL, while its expenditures execution achieved 21,401 billion riels, equivalent to 61.60% of the 2023 BL. **As a result, BCG's budget execution has a 2,913 billion riels deficit.**

**BCG collected 18,488 billion riels in domestic revenue, equivalent to 71.39% of the 2023 BL, a 0.85% decrease compared to the same period last year,** consisting of 16,647 billion riels in tax revenue, equivalent to 71.07% of the 2023 BL, contributing to a decrease of 2.93%, and 1,811 billion riels in non-tax revenue, equivalent to 84.54% of the 2023 BL, contributing to an increase of 23.66%. Based on the trend of revenue performance over the last several years mixed with the recovery of Cambodia's socio-economic activities, revenue collection is on-track according to the 2023 BL.

**BCG's expenditure reached 21,401 billion riels, equivalent to 61.60% of the 2023 BL, an 11.38% increase compared to the same period last year,** consisting of 7,510 billion riels in current expenditure, contributing to an increase of 8.20%, and 13,891 billion riels in capital expenditure, contributing to an increase of 13.18%. Overall, BCG's expenditure execution continues to maintain the principle of restricting unnecessary expenditures and allocating budgets to implement proactive objectives.

**The Royal Government continues to manage and utilize BCG's total financing effectively and carefully, which has allowed the need for budget execution to be met in a timely manner.** Foreign financing achieved 4,299 billion riels, equivalent to 67.08% of the 2023 BL, and domestic financing achieved 3,547 billion riels, equivalent to 45.88% of the 2023 BL, while the net government's deposits reached 48 billion riels.

TOFE : BUDGET EXECUTION OF 2023															
	2023 C.B.L.	Total Act /BL2023	Total Act	Jan-23	Feb-23	Mar-23	Apr-23	May-23	Jun-23	Jul-23	Aug-23	Sep-23	Oct-23	Nov-23	Dec-23
<b>I. DOMESTIC REVENUE</b>	<b>25,896.24</b>	<b>57.49%</b>	<b>14,888.64</b>	<b>1,855.57</b>	<b>1,663.38</b>	<b>3,131.64</b>	<b>2,483.98</b>	<b>1,804.13</b>	<b>2,135.38</b>	<b>1,825.97</b>	<b>1,884.10</b>	<b>1,704.35</b>	-	-	-
<b>I.CURRENT REVENUE</b>	<b>25,564.43</b>	<b>58.16%</b>	<b>14,867.63</b>	<b>1,855.57</b>	<b>1,663.38</b>	<b>3,127.41</b>	<b>2,473.24</b>	<b>1,801.88</b>	<b>2,131.59</b>	<b>1,825.97</b>	<b>1,884.10</b>	<b>1,695.06</b>	-	-	-
<b>a. TAX REVENUE</b>	<b>23,421.92</b>	<b>57.15%</b>	<b>13,386.76</b>	<b>1,754.09</b>	<b>1,491.63</b>	<b>2,912.81</b>	<b>2,299.68</b>	<b>1,669.56</b>	<b>1,717.04</b>	<b>1,541.73</b>	<b>1,726.44</b>	<b>1,534.01</b>	-	-	-
<b>Domestic tax revenue</b>	<b>20,882.94</b>	<b>57.36%</b>	<b>11,978.66</b>	<b>1,575.95</b>	<b>1,335.28</b>	<b>2,687.42</b>	<b>2,130.18</b>	<b>1,444.97</b>	<b>1,464.47</b>	<b>1,340.34</b>	<b>1,486.05</b>	<b>1,320.58</b>	-	-	-
Direct Tax (income tax, profits tax)	7,257.99	75.07%	5,448.71	666.10	458.41	1,684.06	1,235.10	464.18	463.60	477.38	453.97	445.30	-	-	-
Indirect Tax	13,624.95	47.93%	6,529.96	909.85	876.87	1,003.36	895.08	980.78	1,000.88	862.96	1,032.08	875.28	-	-	-
o.w/ - Excise Tax on specific goods	1,250.00	41.92%	523.97	85.76	74.97	61.61	81.81	83.95	70.49	65.37	65.99	68.51	-	-	-
o.w/ -Special Excise Tax(petroleum,others)	4,109.55	41.27%	1,696.18	223.08	231.52	294.73	228.36	267.45	238.27	212.47	245.79	214.67	-	-	-
o.w/ - Excise Tax on specific services	100.00	49.58%	49.58	7.35	7.30	6.36	7.55	7.82	6.69	6.50	6.83	6.11	-	-	-
Other tax revenues	160.05	66.71%	106.77	14.80	20.59	13.65	16.47	13.64	15.13	12.52	17.78	16.63	-	-	-
<b>Taxes on international trade</b>	<b>2,538.98</b>	<b>55.46%</b>	<b>1,408.10</b>	<b>178.14</b>	<b>156.35</b>	<b>225.39</b>	<b>169.49</b>	<b>224.59</b>	<b>252.57</b>	<b>201.39</b>	<b>240.38</b>	<b>213.43</b>	-	-	-
Taxes and duties on imports	2,491.50	50.97%	1,368.73	176.96	152.14	219.05	164.15	218.39	246.44	191.42	220.78	199.15	-	-	-
April, 2021	1,680.10	50.97%	856.30	123.35	97.77	128.56	113.49	143.97	125.38	123.61	136.40	111.84	-	-	-
-Customs duties on petroleum products	352.70	73.44%	259.02	28.66	27.43	42.93	28.52	39.30	55.98	36.21	41.38	46.20	-	-	-
-Additional tax on oil product - Road maintenance	412.30	51.82%	213.66	18.66	21.30	40.76	17.59	29.63	60.06	25.67	36.43	36.22	-	-	-
-others	46.40	85.67%	39.75	6.29	5.65	6.80	4.55	5.49	5.03	5.93	6.58	4.89	-	-	-
Taxes and duties on exports	47.49	82.90%	39.37	1.18	4.21	6.34	5.34	6.19	6.13	9.97	19.60	14.28	-	-	-
o.w/-Tax on timber exports	10.40	21.82%	2.27	0.00	0.48	0.88	0.25	0.48	0.08	0.09	0.26	0.05	-	-	-
-Tax on rubber exports	15.10	5.79%	0.87	0.07	0.33	0.19	0.05	0.04	0.11	0.09	0.10	0.12	-	-	-
-Tax on export of agricultural products	21.83	165.61%	36.15	1.10	3.40	5.26	5.03	5.66	5.93	9.76	19.24	14.09	-	-	-
<b>b. NON TAX REVENUE</b>	<b>2,142.50</b>	<b>69.12%</b>	<b>1,480.86</b>	<b>101.48</b>	<b>171.75</b>	<b>214.60</b>	<b>173.56</b>	<b>132.33</b>	<b>414.54</b>	<b>284.23</b>	<b>157.67</b>	<b>161.05</b>	-	-	-
<b>State Property Revenue</b>	<b>173.81</b>	<b>61.72%</b>	<b>107.27</b>	<b>16.58</b>	<b>27.32</b>	<b>10.14</b>	<b>15.81</b>	<b>8.63</b>	<b>19.92</b>	<b>12.69</b>	<b>9.40</b>	<b>13.26</b>	-	-	-
Concession and rental land	165.96	43.93%	72.90	16.58157	4.57	10.14	15.81	8.63	8.30	12.69	9.40	13.26	-	-	-
Public Enterprises Income	7.85	437.88%	34.37	-	22.75	-	-	-	11.62	-	-	-	-	-	-
<b>Income from Sales, Rental of Properties and Services</b>	<b>1,593.33</b>	<b>74.27%</b>	<b>1,183.34</b>	<b>84.07</b>	<b>116.71</b>	<b>154.96</b>	<b>132.10</b>	<b>77.44</b>	<b>386.74</b>	<b>236.00</b>	<b>116.57</b>	<b>138.47</b>	-	-	-
Income of administrative public enterprises -operational services (for profit)	583.01	78.07%	455.18	9.26	37.92	25.73	30.10	32.55	281.05	39.07	35.66	29.73	-	-	-
Sales of Property of Public Administration	96.90	111.83%	108.36	3.40	19.14	18.27	20.19	14.53	3.18	29.73	7.86	7.42	-	-	-
Administrative fees	578.15	66.21%	382.81	38.69	46.05	58.16	64.38	12.62	68.18	97.16	55.14	66.67	-	-	-
Sales of Services	43.31	92.92%	40.24	0.65	0.71	6.86	0.94	0.79	21.55	8.77	2.41	3.42	-	-	-
Other transaction fees	259.11	68.01%	176.22	23.60	11.46	43.52	12.69	15.89	11.07	58.49	14.42	29.65	-	-	-
Other Rental of immovable properties	32.85	62.51%	20.54	8.47	1.43	2.41	3.79	1.07	1.71	2.78	1.09	1.58	-	-	-

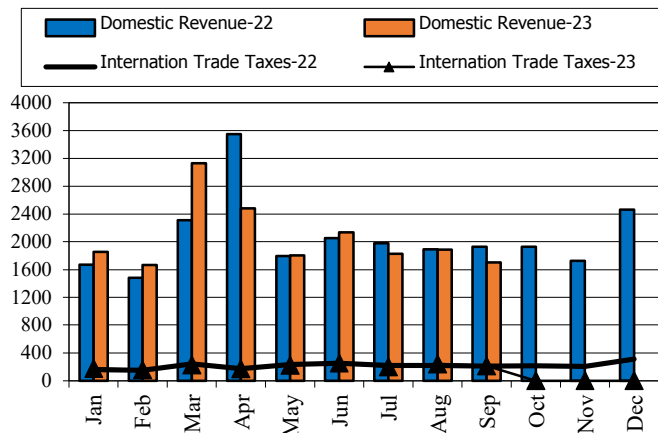
TOFE : BUDGET EXECUTION OF 2023															
	2023 C.B.L.	Total Act /BL2023	Total Act	Jan-23	Feb-23	Mar-23	Apr-23	May-23	Jun-23	Jul-23	Aug-23	Sep-23	Oct-23	Nov-23	Dec-23
<b>Other non tax</b>	375.37	50.68%	190.25	0.83	27.72	49.49	25.66	46.26	7.89	35.54	31.70	9.33	-	-	-
o.w/ Other exceptional revenues	-	...	4.69	0.02	0.49	-	2.64	0.98	0.44	0.18	0.15	(0.01)	-	-	-
<b>2. CAPITAL REVENUE</b>	331.81	6.33%	21.02	-	-	4.23	10.74	2.25	3.79	-	-	9.29	-	-	-
Other financial assets	331.81	6.33%	21.02	-	-	4.23	10.74	2.25	3.79	-	-	9.29	-	-	-
<b>II. BUDGET EXPENDITURE</b>	34,743.81	52.58%	18,269.44	1,251.04	2,674.54	2,939.38	3,020.86	1,827.49	2,532.76	2,784.00	2,119.43	2,251.26	-	-	-
<b>I. CURRENT EXPENDITURE</b>	20,839.43	52.34%	10,907.20	902.95	1,551.61	2,211.27	2,305.67	824.96	1,432.64	1,812.89	1,459.16	1,389.72	-	-	-
<b>a. Wages</b>	8,828.85	55.33%	4,885.02	620.65	668.73	687.74	1,094.73	404.68	793.06	705.19	763.35	780.56	-	-	-
Personnel charges-civil administrative	4,995.35	54.08%	2,701.32	318.87	368.57	383.51	669.81	194.76	459.77	395.79	431.63	443.26	-	-	-
o.w/ Diplomatic salary	5.32	66.62%	3.54	-	0.71	-	1.54	0.04	1.22	0.04	0.04	1.20	-	-	-
Personnel charges-national defence and security	3,833.50	56.96%	2,183.70	301.78	300.16	304.23	424.92	209.92	333.29	309.40	331.72	337.29	-	-	-
<b>b. Non wage</b>	12,010.58	50.14%	6,022.18	282.31	882.88	1,523.53	1,210.94	420.28	639.57	1,107.70	695.81	609.16	-	-	-
<b>-Purchases</b>	1,527.19	43.66%	666.78	91.84	24.04	35.80	197.52	79.65	140.11	101.18	74.24	75.20	-	-	-
Maintenance supplies	295.90	15.05%	44.53	0.20	6.32	4.90	6.83	7.87	11.67	7.96	6.62	9.31	-	-	-
Administration supplies	251.72	44.00%	110.76	0.17	1.33	9.06	33.78	15.03	20.12	31.77	18.24	31.65	-	-	-
Food and agricultural products	175.84	64.85%	114.04	25.81	4.58	4.94	36.87	6.09	5.90	30.13	7.38	8.18	-	-	-
Clothing and decoration	157.81	11.91%	18.80	-	4.84	0.69	2.08	2.15	3.55	5.55	0.71	0.56	-	-	-
Small tools, material, furniture and equip.	343.67	56.55%	194.34	64.36	1.31	7.01	34.75	16.56	56.99	14.29	16.88	13.09	-	-	-
Energy and water	153.16	36.33%	55.64	1.31	5.63	9.20	10.46	10.01	10.86	8.52	19.75	12.41	-	-	-
Health supplies and equipment	146.03	87.83%	128.26	-	0.02	-	72.54	21.94	30.80	2.95	3.94	0.00	-	-	-
Other supplies	3.05	13.49%	0.41	-	-	-	0.20	0.00	0.20	0.01	0.73	-	-	-	-
<b>-Services</b>	1,821.21	36.91%	672.19	1.76	58.95	79.13	77.71	91.73	134.02	238.24	136.62	196.68	-	-	-
o.w/ -Rentals and charges (furniture)	33.08	65.43%	21.65	0.16	11.24	0.40	4.14	0.52	2.62	2.59	0.21	3.09	-	-	-
-Maintenance and repairs	964.80	32.75%	316.00	0.01	5.58	28.88	24.64	45.19	84.69	131.36	79.25	134.37	-	-	-
<b>-Financial charges</b>	769.49	35.17%	270.66	61.33	67.85	70.70	16.62	17.37	7.55	29.23	147.14	64.20	-	-	-
o.w/ -Interests on domestic debt	-	...	2.61	-	0.42	-	0.27	0.07	0.42	1.44	0.50	-	-	-	-
-Interests on external debt	769.49	30.10%	231.58	61.33	65.19	37.84	16.35	15.96	7.13	27.79	112.32	31.20	-	-	-
<b>-Social Benefit</b>	2,809.32	51.25%	1,439.86	113.73	142.39	250.98	428.80	124.86	246.24	165.16	199.94	217.33	-	-	-
o.w/- Social Security Benefits	1,330.75	61.34%	816.22	106.53	116.69	127.73	241.50	7.93	125.38	113.71	117.63	125.05	-	-	-
-Social Assistance to citizens	1,258.50	42.34%	532.82	4.92	13.32	90.95	172.52	107.59	107.51	43.65	72.40	83.11	-	-	-
-Social Assistance to social and cultural entities	154.35	53.99%	83.34	2.25	12.16	31.54	14.51	9.09	7.52	7.54	8.20	8.36	-	-	-
-Other social benefits	11.29	50.00%	5.64	-	-	-	-	-	5.64	-	-	-	-	-	-
<b>-Grants</b>	3,222.84	87.80%	2,829.73	1.21	569.36	1,046.17	456.97	79.68	105.43	570.91	58.65	54.68	-	-	-

TOFE : BUDGET EXECUTION OF 2023															
	2023 C.B.L.	Total Act /BL2023	Total Act	Jan-23	Feb-23	Mar-23	Apr-23	May-23	Jun-23	Jul-23	Aug-23	Sep-23	Oct-23	Nov-23	Dec-23
-Other non wage	1,860.54	7.68%	142.96	12.43	20.29	40.74	33.32	26.99	6.22	2.97	79.21	1.07	-	-	-
o.w/ -Unanticipated Expense(Reserve)	1,713.85	0.00%	-	-	-	-	-	-	-	-	-	-	-	-	-
<b>2. CAPITAL</b>	<b>13,904.39</b>	<b>52.95%</b>	<b>7,362.24</b>	<b>348.09</b>	<b>1,122.93</b>	<b>728.11</b>	<b>715.20</b>	<b>1,002.53</b>	<b>1,100.12</b>	<b>971.11</b>	<b>660.27</b>	<b>861.54</b>	-	-	-
<b>Domestic Financing</b>	<b>7,730.97</b>	<b>33.69%</b>	<b>2,604.83</b>	<b>8.39</b>	<b>476.40</b>	<b>270.76</b>	<b>483.96</b>	<b>673.82</b>	<b>179.11</b>	<b>522.91</b>	<b>329.27</b>	<b>602.43</b>	-	-	-
Tangible fixed assets and land	7,730.97	33.69%	2,604.83	8.39	468.98	270.76	483.96	673.82	176.02	522.91	329.05	396.08	-	-	-
External assistance (Project)	6,173.42	77.06%	4,757.41	339.70	646.53	457.35	231.24	328.71	921.01	448.20	331.00	259.11	-	-	-
CURRENT DEF/SURPL.comt (I.I-II.I)	4,725.00	83.82%	3,960.43	952.61	111.77	916.14	167.57	976.92	698.95	13.08	424.95	305.34	-	-	-
OVERALL DEF/SURPL.comt (I-II)	(8,847.57)	...	(3,380.80)	604.52	(1,011.16)	192.26	(536.89)	(23.35)	(397.38)	(958.03)	(235.32)	(546.91)	-	-	-
CURRENT DEF/SURPL.cash(comt.+3)	4,725.00	83.82%	3,960.43	952.61	111.77	916.14	167.57	976.92	698.95	13.08	424.95	305.34	-	-	-
OVERALL DEF/SURPL.cash (com.+3)	(8,847.57)	38.21%	(3,380.80)	604.52	(1,011.16)	192.26	(536.89)	(23.35)	(397.38)	(958.03)	(235.32)	(546.91)	-	-	-
<b>III. FINANCING</b>	<b>8,847.57</b>	<b>38.21%</b>	<b>3,380.80</b>	<b>(604.52)</b>	<b>1,011.16</b>	<b>(192.26)</b>	<b>536.89</b>	<b>23.35</b>	<b>397.38</b>	<b>958.03</b>	<b>235.32</b>	<b>546.91</b>	-	-	-
<b>I. FOREIGN FINANCING</b>	<b>6,409.04</b>	<b>83.84%</b>	<b>5,373.61</b>	<b>234.58</b>	<b>459.08</b>	<b>258.32</b>	<b>159.53</b>	<b>300.76</b>	<b>2,257.13</b>	<b>553.98</b>	<b>8.60</b>	<b>67.12</b>	-	-	-
<b>a. Budget support</b>	<b>2,095.51</b>	<b>70.70%</b>	<b>1,481.49</b>	<b>42.12</b>	<b>72.00</b>	<b>4.00</b>	<b>4.00</b>	<b>10.82</b>	<b>1,348.55</b>	<b>234.44</b>	<b>28.06</b>	<b>8.00</b>	-	-	-
-Grants-budget support	123.98	20.12%	24.94	18.12	-	-	-	6.82	-	-	-	-	-	-	-
Capital Support	123.98	20.12%	24.94	18.12	-	-	-	6.82	-	-	-	-	-	-	-
Bilateral grant for investment expense	123.98	20.12%	24.94	18.12	-	-	-	6.82	-	-	-	-	-	-	-
-Debt and related liabilities-budget support	1,971.53	73.88%	1,456.55	24.00	72.00	4.00	4.00	4.00	1,348.55	234.44	28.06	8.00	-	-	-
Foreign borrowing	1,971.53	73.88%	1,456.55	24.00	72.00	4.00	4.00	4.00	1,348.55	234.44	28.06	8.00	-	-	-
Foreign borrowings from multilateral agencies	1,158.53	115.37%	1,336.55	-	-	-	-	-	1,336.55	206.50	-	-	-	-	-
Borrowings from financial market	813.00	14.76%	120.00	24.00	72.00	4.00	4.00	4.00	12.00	27.94	28.06	8.00	-	-	-
<b>b. Project aid</b>	<b>6,173.42</b>	<b>76.37%</b>	<b>4,714.70</b>	<b>306.07</b>	<b>645.41</b>	<b>454.98</b>	<b>227.62</b>	<b>326.98</b>	<b>920.98</b>	<b>448.01</b>	<b>331.70</b>	<b>256.84</b>	-	-	-
Spent	6,173.42	77.06%	4,757.41	339.70	646.53	457.35	231.24	328.71	921.01	448.20	331.00	259.11	-	-	-
-Grants	698.59	109.54%	765.26	109.32	109.32	109.32	109.32	109.32	109.32	109.32	109.32	109.32	-	-	-
Bilateral grant for investment expense	698.59	109.54%	765.26	109.32	109.32	109.32	109.32	109.32	109.32	109.32	109.32	109.32	-	-	-
-Debt and related liabilities	5,474.83	72.92%	3,992.16	230.38	537.21	348.03	121.92	219.39	811.69	338.88	221.68	149.79	-	-	-
Foreign borrowing	5,474.83	72.92%	3,992.16	230.38	537.21	348.03	121.92	219.39	811.69	338.88	221.68	149.79	-	-	-
Foreign borrowings from multilateral agencies	2,189.93	116.79%	2,557.52	177.10	227.91	152.74	65.92	159.43	206.95	69.67	134.53	70.74	-	-	-
Foreign borrowings from bilateral agencies	3,284.90	43.67%	1,434.63	53.28	309.30	195.28	56.00	59.96	604.75	269.21	87.14	79.05	-	-	-
Pending	-	...	(42.71)	(33.63)	(1.12)	(2.37)	(3.62)	(1.73)	(0.03)	(0.19)	0.70	(2.28)	-	-	-
<b>c. Amortization on external debts</b>	<b>(1,859.89)</b>	<b>44.23%</b>	<b>(822.59)</b>	<b>(113.61)</b>	<b>(258.33)</b>	<b>(200.66)</b>	<b>(72.09)</b>	<b>(37.04)</b>	<b>(12.40)</b>	<b>(128.46)</b>	<b>(351.16)</b>	<b>(197.71)</b>	-	-	-

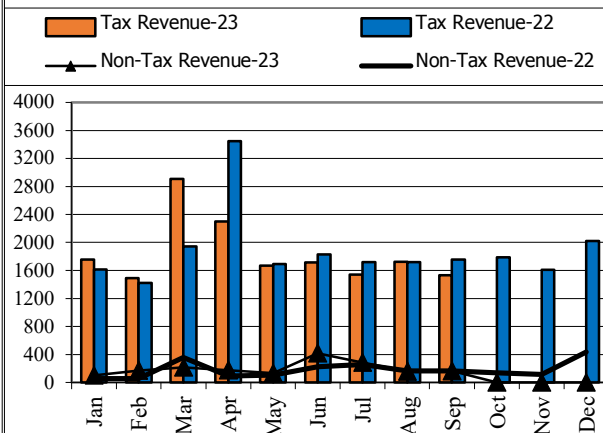
TOFE : BUDGET EXECUTION OF 2023															
	2023 C.B.L.	Total Act /BL2023	Total Act	Jan-23	Feb-23	Mar-23	Apr-23	May-23	Jun-23	Jul-23	Aug-23	Sep-23	Oct-23	Nov-23	Dec-23
<b>2. DOMESTIC FINANCING</b>	-	...	51.41	33.13	(16.12)	(21.26)	22.08	(34.11)	29.09	38.61	24.92	(28.07)	-	-	-
<b>a. Net bank financing (monetary survey)</b>	-	...	51.41	33.13	(16.12)	(21.26)	22.08	(34.11)	29.09	38.61	24.92	(28.07)	-	-	-
- Government's deposits	-	...	51.41	33.13	(16.12)	(21.26)	22.08	(34.11)	29.09	38.61	24.92	(28.07)	-	-	-
<b>3. OUTSTANDING OPERATIONS</b>	-	...	(2,044.22)	(872.24)	568.20	(429.33)	355.28	(243.30)	(1,888.84)	365.44	201.81	507.86	-	-	-
Error	-	...	0.00	0.00	(0.00)	0.00	(0.00)	(0.00)	0.00	0.00	(0.00)	(0.00)	-	-	-
Exchange rate (R/\$)	-	...		4,104	4,043	4,054	4,115	4,116	4,130	4,130	4,158	4,122	-	-	-
Provincial revenue	3,436.25	51.16%	1,757.94	126.28	219.58	1,093.41	145.20	126.77	181.67	228.86	-	-	-	-	-
o.w. provincial tax revenue	2,172.35	29.08%	631.77	116.63	117.57	169.74	105.07	104.46	145.95	124.85	-	-	-	-	-
o.w. prov. non-tax revenue	281.55	20.34%	57.27	9.64	5.14	7.21	11.56	13.28	16.32	19.96	-	-	-	-	-
o.w. prov. Transfer from central	982.35	108.81%	1,068.89	0.01	96.87	916.46	28.58	9.03	19.40	84.06	-	-	-	-	-
Provincial expenditure	2,598.42	46.42%	1,206.24	17.62	163.15	142.28	320.56	121.72	196.32	276.90	213.61	-	-	-	-
o.w. wage and salary	788.67	43.76%	345.13	12.00	49.56	62.68	88.83	20.67	57.60	53.12	53.26	-	-	-	-
o.w. non-wage	1,418.09	50.13%	710.91	3.43	108.59	75.10	129.36	88.85	121.91	216.67	130.04	-	-	-	-
o.w. investment	391.66	38.35%	150.20	2.19	5.00	4.51	102.37	12.20	16.81	7.11	30.31	-	-	-	-
Provincial Balance	837.83	65.85%	551.70	108.66	56.42	951.13	(175.36)	5.05	(14.65)	(48.04)	(213.61)	-	-	-	-
Contribution from casino and Lottery	172.84	38.40%	66.38	8.03	10.19	10.22	9.29	6.73	6.71	15.22	11.06	10.15	-	-	-

## CHARTS

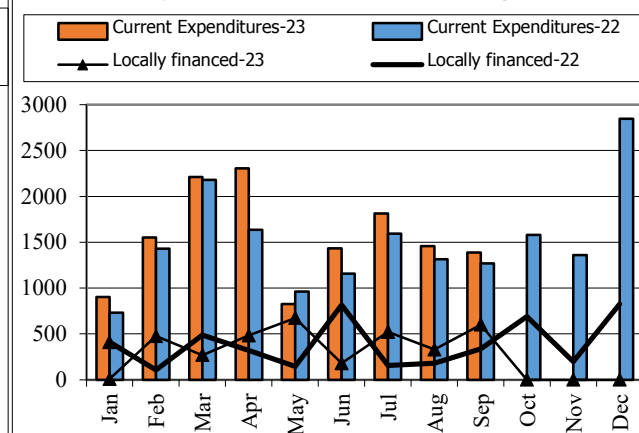
Revenue and Trade Relate Tax 2022-2023



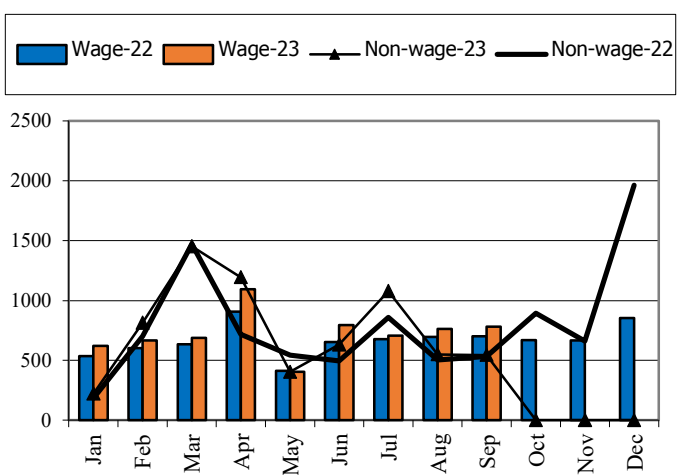
Tax and Non Tax Revenue 2022-2023



Current Expenditures and Domestic Financing 2022-2023



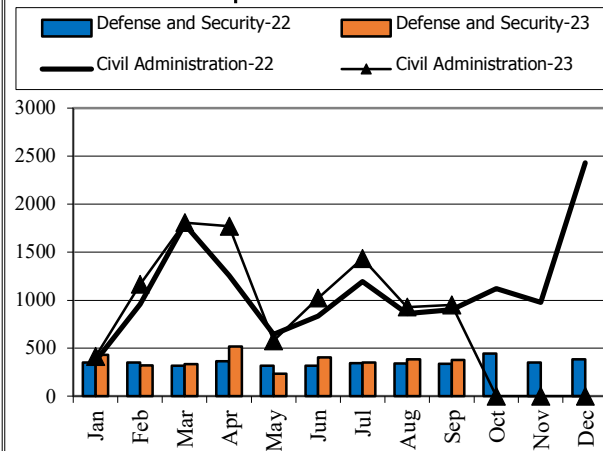
Wage and Non-wage 2022-2023



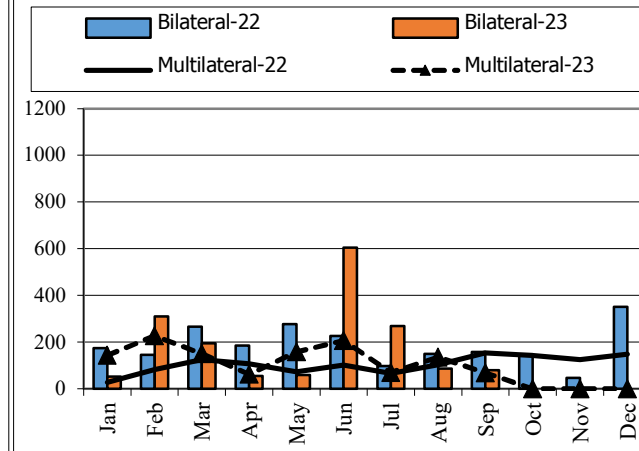
Source: MEF

Defense and Security and Civil Administrative

Expenditure 2022-2023



Multilateral and Bilateral Disbursements 2022-2023



## TABLE OF MINISTRY AND INSTITUTION SPENDING OF 2023

	2023 C.B.L.	Total Act /BL2023	Total Act	Jan-23	Feb-23	Mar-23	Apr-23	May-23	Jun-23	Jul-23	Aug-23	Sep-23	Oct-23	Nov-23	Dec-23
<b>Total Current Expenditures</b>	<b>20,839,425</b>	<b>66.14%</b>	<b>13,782,935</b>	<b>888,982</b>	<b>1,547,337</b>	<b>2,187,002</b>	<b>2,296,164</b>	<b>819,554</b>	<b>1,426,837</b>	<b>1,804,768</b>	<b>1,449,369</b>	<b>1,362,921</b>			
<b>I. General Administration</b>	<b>2,071,543</b>	<b>76.52%</b>	<b>1,585,240</b>	<b>63,400</b>	<b>147,545</b>	<b>153,841</b>	<b>298,347</b>	<b>118,112</b>	<b>170,128</b>	<b>209,878</b>	<b>212,889</b>	<b>211,101</b>	-	-	-
01. Royal Palace	85,903	75.69%	65,017	3,008	7,483	8,945	6,650	6,907	5,262	9,962	8,080	8,720	-	-	-
02. National Assembly	171,100	81.28%	139,075	7,848	30,505	8,384	43,001	746	21,182	9,149	10,413	7,848	-	-	-
03. Senate	74,021	93.82%	69,448	11,350	6,948	13,040	5,126	144	11,638	4,910	-	16,292	-	-	-
04. Counstitutional Council	15,026	89.21%	13,404	3,331	1,317	53	2,752	809	-	2,802	1,142	1,199	-	-	-
05.1 Council of Minister	376,346	89.45%	336,642	9,218	22,196	14,810	57,103	42,292	39,776	40,461	25,968	84,819	-	-	-
05.4 CDC	12,985	3.81%	495	-	-	-	-	-	495	-	-	-	-	-	-
08. Relations Assembly and Inspections	42,572	66.71%	28,399	1,690	2,339	2,952	4,903	2,119	4,505	3,188	3,112	3,591	-	-	-
09. Foreign Affairs and Int'l Cooperation	168,115	71.26%	119,806	968	21,059	15,099	18,580	12,677	21,415	5,388	8,528	16,091	-	-	-
10. Economy and Finance	507,637	86.17%	437,444	11,506	34,809	64,493	77,855	35,070	33,050	26,815	109,456	44,391	-	-	-
14. Planning	81,833	77.51%	63,430	3,872	5,288	5,788	10,223	2,016	8,375	14,513	6,773	6,582	-	-	-
28. Urbanization and Construction	111,731	50.60%	56,536	3,017	4,163	5,287	9,393	1,458	6,395	6,931	9,740	10,151	-	-	-
30. National Election Committee	300,209	56.05%	168,255.42	2,343	3,453	7,257	51,887	6,535	5,522	73,103	18,155	-	-	-	-
31. National Audit Authority	13,837	73.95%	10,233	720	717	907	1,473	296	1,504	1,299	899	2,418	-	-	-
33.1 Anti-corrupction Authority	48,442	69.18%	33,514	2,471	4,350	3,091	2,519	2,806	4,386	6,249	2,980	4,659	-	-	-
34. Public Function	61,786	70.47%	43,541	2,058	2,918	3,733	6,882	4,237	6,621	5,108	7,644	4,339	-	-	-
<b>II. Defense and Security</b>	<b>5,101,874</b>	<b>67.31%</b>	<b>3,434,324</b>	<b>434,394</b>	<b>327,584</b>	<b>342,110</b>	<b>532,718</b>	<b>234,394</b>	<b>413,568</b>	<b>359,481</b>	<b>399,483</b>	<b>390,592</b>	-	-	-
06. National Defense	2,745,575	69.31%	1,902,940	217,033	189,780	195,962	241,769	199,539	209,174	225,233	221,472	202,978	-	-	-
07.1 Interior - Public Security	1,825,423	65.92%	1,203,410	174,898	123,845	109,925	220,635	27,106	146,984	116,283	137,646	146,087	-	-	-
07.2 Interior-Administration	342,720	69.64%	238,675	37,979	5,562	26,365	56,693	5,222	46,541	6,687	26,175	27,452	-	-	-
26. Justice	188,156	47.46%	89,300	4,484	8,398	9,857	13,620	2,528	10,869	11,278	14,190	14,076	-	-	-
<b>III. Social Administrative</b>	<b>6,930,838</b>	<b>68.06%</b>	<b>4,717,106</b>	<b>298,909</b>	<b>398,451</b>	<b>527,777</b>	<b>938,433</b>	<b>370,272</b>	<b>659,414</b>	<b>492,975</b>	<b>552,487</b>	<b>478,388</b>	-	-	-
11. Information	83,682	70.91%	59,337	3,342	4,011	10,161	12,546	4,400	6,112	6,589	5,473	6,703	-	-	-
12. Public Health	1,386,887	51.86%	719,181	9,093	10,954	102,846	225,409	130,657	113,797	32,505	59,702	34,218	-	-	-
16. Education, Youth and Sport	3,361,826	67.99%	2,285,547	155,174	229,701	214,308	379,982	201,069	298,737	246,876	298,161	261,538	-	-	-
18. Culture and Fine-Arts	167,255	75.96%	127,043	4,105	7,408	23,060	13,596	4,890	30,608	12,815	22,464	8,097	-	-	-
19. Environment	88,605	71.91%	63,718	3,512	5,754	5,495	9,824	4,105	8,567	6,267	9,663	10,530	-	-	-
21. Social Affair & Veteran	1,466,286	81.31%	1,192,228	111,409	125,693	149,299	261,373	15,039	144,583	123,627	126,896	134,310	-	-	-
23. Public Worship and Religion	69,353	72.00%	49,934	2,024	3,231	4,317	7,594	2,733	7,253	9,199	7,868	5,715	-	-	-
24. Woman Affairs	46,243	75.83%	35,066	1,104	2,556	4,541	4,703	3,302	7,439	3,107	3,698	4,617	-	-	-
32. Labour and Vocational Training	260,701	70.98%	185,054	9,147	9,143	13,751	23,406	4,076	42,318	51,991	18,562	12,661	-	-	-
<b>IV. Economy Administrative</b>	<b>1,582,070</b>	<b>63.20%</b>	<b>999,807</b>	<b>30,951</b>	<b>49,070</b>	<b>109,872</b>	<b>109,906</b>	<b>68,026</b>	<b>130,358</b>	<b>172,461</b>	<b>125,684</b>	<b>203,479</b>	-	-	-



## TABLE OF MINISTRY AND INSTITUTION SPENDING OF 2023

	2023 C.B.L.	Total Act /BL2023	Total Act	Jan-23	Feb-23	Mar-23	Apr-23	May-23	Jun-23	Jul-23	Aug-23	Sep-23	Oct-23	Nov-23	Dec-23
05.3 Civil Aviation Secretariate	45,995	58.39%	26,854	1,604	1,598	1,692	3,181	860	5,968	709	7,163	4,079	-	-	-
13. Industry, Mines and Energy	64,425	64.02%	41,243	1,664	2,137	5,052	5,548	2,268	4,902	4,206	6,552	8,913	-	-	-
15. Commerce	125,303	61.01%	76,443	3,442	4,221	8,421	9,387	8,363	12,697	10,709	12,092	7,111	-	-	-
17. Agriculture, Forestry and Fishery	265,768	70.04%	186,142	8,685	13,092	18,987	32,146	9,319	27,668	19,240	23,532	33,473	-	-	-
20. Rural Development	194,364	32.21%	62,608	2,497	3,794	5,433	6,669	3,000	12,702	9,348	9,844	9,321	-	-	-
22. Posts and Telecommunications	131,189	68.00%	89,208	2,011	2,676	19,932	7,818	18,692	5,167	16,863	5,145	10,905	-	-	-
25. Public Works and Transport	436,255	67.02%	292,380	4,690	12,141	29,800	19,158	8,451	42,350	91,669	33,509	50,613	-	-	-
27. Tourism	81,713	74.70%	61,038	2,143	3,896	9,835	7,740	9,538	5,678	6,139	10,442	5,628	-	-	-
29. Water Resources and Meteorology	175,057	66.63%	116,649	2,289	2,749	5,496	7,579	3,833	7,777	8,442	8,833	69,652	-	-	-
35. Industry and Handicrafts	62,001	76.20%	47,242	1,927	2,767	5,224	10,679	3,702	5,449	5,137	8,572	3,783	-	-	-
<b>V. Miscellaneous</b>	<b>5,153,100</b>	<b>59.12%</b>	<b>3,046,458</b>	<b>61,328</b>	<b>624,686</b>	<b>1,053,403</b>	<b>416,761</b>	<b>28,750</b>	<b>53,370</b>	<b>569,973</b>	<b>158,826</b>	<b>79,361</b>	-	-	-
99.Unallocated Expenditure	5,153,100	59.12%	3,046,458	61,328	624,686	1,053,403	416,761	28,750	53,370	569,973	158,826	79,361	-	-	-

## Report preparation Note



The Implementation of State Budget (TOFE) in September 2023 is compiled based on the preliminary data with the cut-off date as the followings:

- 1.The Revenue Data of the Budgetary Central Government Level (Line Ministries and Line Departments) provided by General Department Of National Treasury (GDNT) and FMIS System, was updated on 18th October, 2023
- 2.The Revenue Data of the Local Government Level (Municiple/ Provincial Level) provided by GDNT and FMIS System, was updated on 18th October, 2023
- 3.The Expenditure Data of the Budgetary Central Government Level (Line Ministries and Line Departments) provided by GDNT and FMIS System, was updated on 18th October, 2023
- 4.The Expenditure Data of the Local Government Level (Municiple/ Provincial Level) provided by GDNT and FMIS System, was updated on 18th October, 2023
- 5.The Trail Balance Report of the Budgetary Central Government Level (Line Ministries and Line Departments) provided by GDNT and FMIS System, was updated on 18th October, 2023
- 6.The Trail Balance Report of the Local Government Level (Municiple/ Provincial Level) provided by GDNT and FMIS System, was updated on 18th October, 2023
- 7.The Loan & Grant Data provided by General Department of International Cooperation and Debt Management (GDICDM), was updated on 18th October, 2023
- 8.The Multilateral & Bilateral Data downloaded from DMFAS System of GDICDM, was updated on 18th October, 2023
- 9.The Credit Bank Operations Data provided by National Bank of Cambodia (NBC), was updated on 18th October, 2023.

TOFE report will be updated in the next release of the following month.

