



ព្រះរាជាណាចក្រកម្ពុជា  
ជាតិ សាសនា ព្រះមហាក្សត្រ  
KINGDOM OF CAMBODIA  
Nation Religion King

ក្រសួងសេដ្ឋកិច្ច និង ហិរញ្ញវត្ថុ  
MINISTRY OF ECONOMY AND FINANCE  
N°.....MEF/.....

# State Budget Implementation

July, 2022

Content	Page
1. Brief	1
2. TOFE	2
3. Table of Ministry and Institution Spending	6
4. Note: Report preparation	9

## 1. Brief Note

Given the ongoing COVID-19 situation, high vaccination rates, and the reopening of the country, domestic economic activity in Cambodia has been able to return to normal. Meanwhile, the Royal Government has continued the social intervention measures, such as the implementation of social assistance programs to help poor and vulnerable families, the cash for work program, and the execution of proactive targeted spending and strengthening cost efficiency. As a result, the state budget within the first 7 months of 2022 was implemented as follows:

**The implementation of the domestic revenue of the Budgetary Central Government (BCG) reached 14,815 billion riels, equivalent to 66.60% of the 2022 budget law, which is similar to the implementation in the same period in 2021.** Of which, tax revenue reached 67.59% and non-tax revenue reached 58.05% of the 2022 budget law. Based on the historical trends of revenue performance over the past years, coupled with the recovery of Cambodian socio-economic activities, the revenue performance of 2022 is on track to meet targets set out in the 2022 budget law.

**The implementation of the total expenditure of the BCG reached 15,936 billion riels, equivalent to 51.24% of the 2022 budget law, an increase of 16.57%,** of which current expenditure reached 9,625 billion riels increased by 7.45%, while capital expenditure reached 6,311 billion Riels, an increase of 33.89% compared to the same period of 2021. Overall, the budgeted expenditure for 2022 upholds the premise of minimizing unnecessary spending while shifting the priority to further combat the consequences of the Covid-19 pandemic.

**Amid the COVID-19 pandemic, the Royal Government has carefully and effectively managed and utilized the total financing, which is able to sustain the above implementations in a timely manner.** The total implementation of foreign financing reached 4,744 billion riels, or 69.52% of the budget law, while the total government deposits amounted to 137 billion riels.



TOFE : BUDGET EXECUTION OF 2022															
	2022 C.B.L.	Total Act /BL2022	Total Act	Jan-22	Feb-22	Mar-22	Apr-22	Apr-22	Jun-22	Jul-22	Aug-22	Sep-22	Oct-22	Nov-22	Dec-22
<b>I. DOMESTIC REVENUE</b>	<b>22,243.10</b>	<b>66.60%</b>	<b>14,814.57</b>	<b>1,666.79</b>	<b>1,482.13</b>	<b>2,307.99</b>	<b>3,546.65</b>	<b>1,791.22</b>	<b>2,049.34</b>	<b>1,970.45</b>	-	-	-	-	-
<b>I.CURRENT REVENUE</b>	<b>22,157.34</b>	<b>66.76%</b>	<b>14,791.93</b>	<b>1,666.79</b>	<b>1,482.13</b>	<b>2,297.55</b>	<b>3,539.35</b>	<b>1,790.06</b>	<b>2,049.34</b>	<b>1,966.70</b>	-	-	-	-	-
<b>a. TAX REVENUE</b>	<b>20,227.01</b>	<b>67.59%</b>	<b>13,671.36</b>	<b>1,613.96</b>	<b>1,423.75</b>	<b>1,944.25</b>	<b>3,447.47</b>	<b>1,688.53</b>	<b>1,830.68</b>	<b>1,722.72</b>	-	-	-	-	-
<b>Domestic tax revenue</b>	<b>17,815.30</b>	<b>68.75%</b>	<b>12,248.29</b>	<b>1,454.86</b>	<b>1,273.52</b>	<b>1,705.57</b>	<b>3,273.15</b>	<b>1,457.95</b>	<b>1,578.93</b>	<b>1,504.32</b>	-	-	-	-	-
Direct Tax (income tax, profits tax)	5,481.00	93.89%	5,146.05	535.06	391.27	658.82	2,291.96	399.99	428.93	440.02	-	-	-	-	-
Indirect Tax	12,334.30	57.58%	7,102.24	919.80	882.25	1,046.75	981.18	1,057.96	1,150.00	1,064.31	-	-	-	-	-
o.w/ - Excise Tax on specific goods	1,000.00	59.97%	599.66	99.40	95.32	78.88	90.38	95.58	73.50	66.61	-	-	-	-	-
o.w/ -Special Excise Tax(petroleum,others)	4,050.30	57.02%	2,309.61	263.84	256.66	358.43	310.62	347.98	408.09	363.99	-	-	-	-	-
o.w/ - Excise Tax on specific services	75.00	60.10%	45.07	5.99	8.87	5.66	6.68	6.30	5.77	5.82	-	-	-	-	-
Other tax revenues	160.00	54.47%	87.16	9.98	10.10	10.53	15.44	13.59	12.00	15.52	-	-	-	-	-
<b>Taxes on international trade</b>	<b>2,411.71</b>	<b>59.01%</b>	<b>1,423.07</b>	<b>159.11</b>	<b>150.23</b>	<b>238.68</b>	<b>174.32</b>	<b>230.58</b>	<b>251.75</b>	<b>218.40</b>	-	-	-	-	-
Taxes and duties on imports	2,371.25	59.26%	1,391.88	155.05	145.57	233.90	170.95	226.61	247.30	212.50	-	-	-	-	-
April, 2021	1,687.60	59.26%	1,000.04	118.26	111.75	137.59	132.90	163.41	168.17	167.95	-	-	-	-	-
-Customs duties on petroleum products	265.30	59.30%	157.33	14.55	13.00	33.67	14.97	29.94	33.97	17.24	-	-	-	-	-
-Additional tax on oil product - Road maintenance	370.00	54.42%	201.37	17.78	16.70	58.42	19.40	26.66	40.36	22.06	-	-	-	-	-
-others	48.35	68.56%	33.15	4.46	4.12	4.22	3.69	6.60	4.80	5.25	-	-	-	-	-
Taxes and duties on exports	40.46	77.08%	31.19	4.06	4.66	4.78	3.37	3.97	4.46	5.90	-	-	-	-	-
o.w/-Tax on timber exports	10.40	47.51%	4.94	1.30	1.40	0.59	0.49	0.35	0.24	0.58	-	-	-	-	-
-Tax on rubber exports	17.10	67.09%	11.47	1.79	2.17	2.39	1.52	0.93	1.53	1.14	-	-	-	-	-
-Tax on export of agricultural products	12.80	113.28%	14.50	0.95	1.07	1.78	1.35	2.67	2.63	4.05	-	-	-	-	-
<b>b. NON TAX REVENUE</b>	<b>1,930.34</b>	<b>58.05%</b>	<b>1,120.57</b>	<b>52.83</b>	<b>58.38</b>	<b>353.30</b>	<b>91.88</b>	<b>101.54</b>	<b>218.66</b>	<b>243.98</b>	-	-	-	-	-
<b>State Property Revenue</b>	<b>173.95</b>	<b>212.05%</b>	<b>368.87</b>	<b>15.52</b>	<b>6.44</b>	<b>286.06</b>	<b>17.18</b>	<b>7.45</b>	<b>14.65</b>	<b>21.58</b>	-	-	-	-	-
Concession and rental land	166.42	45.60%	75.89	15.51976	6.44	6.83	17.18	7.45	6.20	16.27	-	-	-	-	-
Public Enterprises Income	7.53	3890.90%	292.98	-	-	279.22	-	-	8.45	5.31	-	-	-	-	-
<b>Income from Sales, Rental of Properties and Services</b>	<b>1,425.00</b>	<b>42.66%</b>	<b>607.92</b>	<b>36.16</b>	<b>37.10</b>	<b>52.98</b>	<b>63.24</b>	<b>72.09</b>	<b>184.58</b>	<b>161.77</b>	-	-	-	-	-
Income of administrative public enterprises -operational services (for profit)	550.43	53.10%	292.29	0.71	6.18	11.46	18.55	24.13	135.10	96.16	-	-	-	-	-
Sales of Property of Public Administration	94.82	44.16%	41.88	6.50	10.34	7.81	6.87	3.12	3.02	4.22	-	-	-	-	-
Administrative fees	508.68	42.62%	216.78	18.43	16.63	26.86	28.07	37.13	40.04	49.61	-	-	-	-	-
Sales of Services	37.90	19.00%	7.20	0.65	1.25	0.76	0.86	0.93	1.06	1.70	-	-	-	-	-
Other transaction fees	201.08	14.60%	29.36	2.47	1.64	4.59	5.61	5.15	4.55	5.35	-	-	-	-	-
Other Rental of immovable properties	32.09	63.62%	20.41	7.41	1.08	1.50	3.27	1.63	0.80	4.73	-	-	-	-	-
<b>Other non tax</b>	<b>331.39</b>	<b>43.39%</b>	<b>143.78</b>	<b>1.15</b>	<b>14.83</b>	<b>14.26</b>	<b>11.47</b>	<b>22.00</b>	<b>19.44</b>	<b>60.63</b>	-	-	-	-	-
o.w/ Other exceptional revenues	-	...	4.11	0.27	-	-	-	0.01	-	3.83	-	-	-	-	-
<b>2. CAPITAL REVENUE</b>	<b>85.76</b>	<b>26.40%</b>	<b>22.64</b>	<b>-</b>	<b>-</b>	<b>10.44</b>	<b>7.30</b>	<b>1.16</b>	<b>-</b>	<b>3.74</b>	-	-	-	-	-
Other financial assets	85.76	26.40%	22.64	-	-	10.44	7.30	1.16	-	3.74	-	-	-	-	-

## TOFE : BUDGET EXECUTION OF 2022

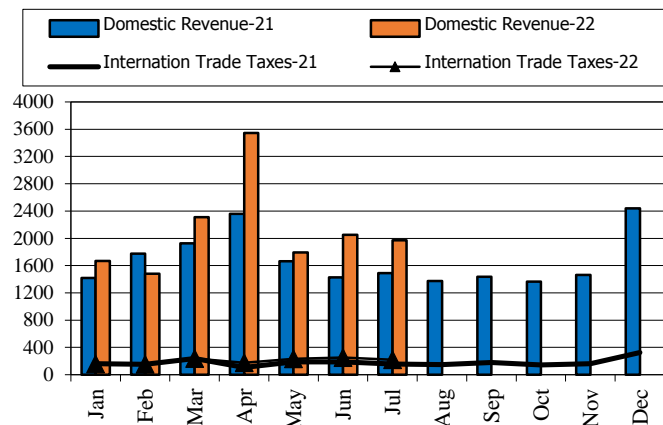
	2022 C.B.L.	Total Act /BL2022	Total Act	Jan-22	Feb-22	Mar-22	Apr-22	Apr-22	Jun-22	Jul-22	Aug-22	Sep-22	Oct-22	Nov-22	Dec-22
<b>II. BUDGET EXPENDITURE</b>	<b>31,099.21</b>	<b>51.24%</b>	<b>15,935.66</b>	<b>1,388.83</b>	<b>1,712.75</b>	<b>4,534.78</b>	<b>2,296.34</b>	<b>1,658.68</b>	<b>2,334.97</b>	<b>2,009.31</b>	-	-	-	-	-
<b>1. CURRENT EXPENDITURE</b>	<b>19,111.70</b>	<b>50.36%</b>	<b>9,624.57</b>	<b>730.70</b>	<b>1,417.69</b>	<b>2,171.84</b>	<b>1,618.74</b>	<b>946.52</b>	<b>1,147.60</b>	<b>1,591.48</b>	-	-	-	-	-
<b>a. Wages</b>	<b>8,020.64</b>	<b>54.77%</b>	<b>4,392.92</b>	<b>534.54</b>	<b>603.90</b>	<b>633.87</b>	<b>892.61</b>	<b>401.22</b>	<b>649.24</b>	<b>677.53</b>	-	-	-	-	-
Personnel charges-civil administrative	4,491.12	53.62%	2,408.21	256.31	323.21	348.07	602.10	118.35	369.16	391.01	-	-	-	-	-
o.w/ Diplomatic salary	5.15	44.37%	2.28	-	0.98	1.27	-	-	0.04	-	-	-	-	-	-
Personnel charges-national defence and security	3,529.52	56.23%	1,984.71	278.23	280.69	285.79	290.51	282.87	280.09	286.53	-	-	-	-	-
<b>b. Non wage</b>	<b>11,091.06</b>	<b>47.17%</b>	<b>5,231.66</b>	<b>196.16</b>	<b>813.79</b>	<b>1,537.98</b>	<b>726.13</b>	<b>545.30</b>	<b>498.36</b>	<b>913.95</b>	-	-	-	-	-
<b>-Purchases</b>	<b>1,434.02</b>	<b>39.62%</b>	<b>568.21</b>	<b>55.70</b>	<b>59.54</b>	<b>35.51</b>	<b>103.25</b>	<b>150.06</b>	<b>76.24</b>	<b>87.91</b>	-	-	-	-	-
Maintenance supplies	251.27	15.17%	38.11	0.67	3.96	4.49	7.69	5.22	7.07	9.00	-	-	-	-	-
Administration supplies	239.05	42.78%	102.27	0.42	0.89	8.98	26.43	19.13	32.09	14.32	-	-	-	-	-
Food and agricultural products	175.21	65.12%	114.10	-	30.35	9.91	33.19	5.56	5.09	30.01	-	-	-	-	-
Clothing and decoration	147.51	4.45%	6.57	0.27	0.70	1.02	1.06	0.96	2.23	0.33	-	-	-	-	-
Small tools, material, furniture and equip.	320.52	51.35%	164.59	53.60	20.73	4.95	25.52	24.27	17.85	17.68	-	-	-	-	-
Energy and water	149.01	36.10%	53.79	0.75	2.84	6.01	9.17	12.46	10.87	11.70	-	-	-	-	-
Health supplies and equipment	148.32	59.86%	88.79	-	0.08	0.15	0.20	82.46	1.04	4.86	-	-	-	-	-
Other supplies	3.12	0.00%	-	-	-	-	-	-	-	-	-	-	-	-	-
<b>-Services</b>	<b>1,649.60</b>	<b>32.13%</b>	<b>530.07</b>	<b>6.33</b>	<b>47.22</b>	<b>42.60</b>	<b>76.94</b>	<b>105.58</b>	<b>138.30</b>	<b>113.10</b>	-	-	-	-	-
o.w/ -Rentals and charges (furniture)	31.75	49.63%	15.76	0.16	11.09	2.82	0.51	0.03	0.35	0.79	-	-	-	-	-
-Maintenance and repairs	897.08	22.33%	200.28	0.80	6.58	21.54	21.45	37.37	52.45	60.09	-	-	-	-	-
<b>-Financial charges</b>	<b>645.98</b>	<b>44.02%</b>	<b>284.36</b>	<b>13.87</b>	<b>123.50</b>	<b>68.18</b>	<b>9.82</b>	<b>6.14</b>	<b>8.37</b>	<b>54.48</b>	-	-	-	-	-
-Interests on external debt	645.98	35.36%	228.41	13.38	123.50	39.43	9.66	6.14	8.37	27.93	-	-	-	-	-
<b>-Social Benefit</b>	<b>2,751.83</b>	<b>48.15%</b>	<b>1,325.03</b>	<b>114.38</b>	<b>126.29</b>	<b>382.83</b>	<b>178.01</b>	<b>198.11</b>	<b>173.81</b>	<b>151.61</b>	-	-	-	-	-
o.w/- Social Security Benefits	1,260.51	56.91%	717.38	100.51	99.24	212.15	100.47	0.17	101.66	103.18	-	-	-	-	-
-Social Assistance to citizens	1,288.54	40.97%	527.97	10.29	17.01	156.88	59.94	187.61	62.08	34.16	-	-	-	-	-
-Social Assistance to social and cultural entities	145.88	49.18%	71.74	3.58	10.00	13.50	17.16	9.97	6.84	10.70	-	-	-	-	-
-Other social benefits	11.25	50.00%	5.63	-	-	-	-	-	2.81	2.81	-	-	-	-	-
<b>-Grants</b>	<b>2,844.78</b>	<b>84.99%</b>	<b>2,417.87</b>	<b>3.33</b>	<b>413.30</b>	<b>993.70</b>	<b>354.86</b>	<b>70.35</b>	<b>96.72</b>	<b>485.61</b>	-	-	-	-	-
<b>-Other non wage</b>	<b>1,764.85</b>	<b>6.01%</b>	<b>106.12</b>	<b>2.55</b>	<b>43.93</b>	<b>15.16</b>	<b>3.25</b>	<b>15.06</b>	<b>4.92</b>	<b>21.25</b>	-	-	-	-	-
o.w/ -Unanticipated Expense(Reserve)	1,618.26	0.00%	-	-	-	-	-	-	-	-	-	-	-	-	-
<b>2. CAPITAL</b>	<b>11,987.51</b>	<b>52.65%</b>	<b>6,311.09</b>	<b>658.14</b>	<b>295.06</b>	<b>2,362.94</b>	<b>677.60</b>	<b>712.16</b>	<b>1,187.37</b>	<b>417.83</b>	-	-	-	-	-
<b>Domestic Financing</b>	<b>6,174.02</b>	<b>39.50%</b>	<b>2,438.63</b>	<b>409.66</b>	<b>107.48</b>	<b>486.55</b>	<b>320.00</b>	<b>146.70</b>	<b>812.56</b>	<b>155.69</b>	-	-	-	-	-
Tangible fixed assets and land	6,174.02	34.53%	2,132.13	409.66	107.48	486.55	320.00	144.92	507.84	155.69	-	-	-	-	-
Investments	-	...	306.51	-	-	-	-	1.78	304.73	-	-	-	-	-	-
<b>External assistance (Project)</b>	<b>5,813.48</b>	<b>66.61%</b>	<b>3,872.46</b>	<b>248.48</b>	<b>187.59</b>	<b>1,876.39</b>	<b>357.60</b>	<b>565.46</b>	<b>374.80</b>	<b>262.14</b>	-	-	-	-	-
<b>CURRENT DEF/SURPL.comt (I.I-II.I)</b>	<b>3,045.64</b>	<b>169.66%</b>	<b>5,167.35</b>	<b>936.10</b>	<b>64.44</b>	<b>125.71</b>	<b>1,920.61</b>	<b>843.54</b>	<b>901.74</b>	<b>375.22</b>	-	-	-	-	-

TOFE : BUDGET EXECUTION OF 2022															
	2022 C.B.L.	Total Act /BL2022	Total Act	Jan-22	Feb-22	Mar-22	Apr-22	Apr-22	Jun-22	Jul-22	Aug-22	Sep-22	Oct-22	Nov-22	Dec-22
OVERALL DEF/SURPL.comt (I-II)	(8,856.11)	...	(1,121.10)	277.96	(230.62)	(2,226.80)	1,250.31	132.54	(285.62)	(38.87)	-	-	-	-	-
CURRENT DEF/SURPL.cash(comt.+3)	3,045.64	169.66%	5,167.35	936.10	64.44	125.71	1,920.61	843.54	901.74	375.22	-	-	-	-	-
OVERALL DEF/SURPL.cash (com.+3)	(8,856.11)	...	(1,121.10)	277.96	(230.62)	(2,226.80)	1,250.31	132.54	(285.62)	(38.87)	-	-	-	-	-
III. FINANCING	8,856.11	12.66%	1,121.10	(277.96)	230.62	2,226.80	(1,250.31)	(132.54)	285.62	38.87	-	-	-	-	-
1. FOREIGN FINANCING	6,823.61	69.52%	4,743.89	188.27	3.83	2,539.67	826.50	541.49	541.13	102.99	-	-	-	-	-
a. Budget support	2,487.78	62.19%	1,547.11	-	-	892.44	496.93	-	157.75	-	-	-	-	-	-
-Grants-budget support	100.00	0.14%	0.14	-	-	-	-	-	0.14	-	-	-	-	-	-
Capital Support	100.00	0.14%	0.14	-	-	-	-	-	0.14	-	-	-	-	-	-
Bilateral grant for investment expense	100.00	0.14%	0.14	-	-	-	-	-	0.14	-	-	-	-	-	-
-Debt and related liabilities-budget support	2,387.78	64.79%	1,546.97	-	-	892.44	496.93	-	157.60	-	-	-	-	-	-
Foreign borrowing	2,387.78	64.79%	1,546.97	-	-	892.44	496.93	-	157.60	-	-	-	-	-	-
Foreign borrowings from multilateral agencies	1,168.28	132.41%	1,546.97	-	-	892.44	496.93	-	157.60	-	-	-	-	-	-
Borrowings from financial market	1,219.50	0.00%	-	-	-	-	-	-	-	-	-	-	-	-	-
b. Project aid	5,813.48	68.05%	3,955.93	266.30	294.15	1,844.40	357.49	571.94	394.07	227.57	-	-	-	-	-
Spent	5,813.48	66.61%	3,872.46	248.48	187.59	1,876.39	357.60	565.46	374.80	262.14	-	-	-	-	-
-Grants	776.21	58.33%	452.79	64.68	64.68	64.68	64.68	64.68	64.68	64.68	-	-	-	-	-
Bilateral grant for investment expense	776.21	58.33%	452.79	64.68	64.68	64.68	64.68	64.68	64.68	64.68	-	-	-	-	-
-Debt and related liabilities	5,037.28	67.89%	3,419.67	183.80	122.90	1,811.71	292.92	500.77	310.12	197.45	-	-	-	-	-
Foreign borrowing	5,037.28	67.89%	3,419.67	183.80	122.90	1,811.71	292.92	500.77	310.12	197.45	-	-	-	-	-
Foreign borrowings from multilateral agencies	2,014.91	69.00%	1,390.29	9.38	(23.20)	1,048.15	107.23	65.68	82.94	100.09	-	-	-	-	-
Foreign borrowings from bilateral agencies	3,022.37	67.15%	2,029.38	174.41	146.10	763.55	185.68	435.09	227.18	97.37	-	-	-	-	-
Pending	-	...	83.47	17.82	106.56	(31.99)	(0.10)	6.49	19.27	(34.57)	-	-	-	-	-
c. Amortization on external debts	(1,477.66)	...	(759.16)	(78.02)	(290.31)	(197.17)	(27.93)	(30.45)	(10.68)	(124.58)	-	-	-	-	-
2. DOMESTIC FINANCING	700.00	-19.55%	(136.88)	(37.80)	(91.34)	36.43	(0.87)	15.24	(68.63)	10.09	-	-	-	-	-
a. Net bank financing (monetary survey)	700.00	-19.55%	(136.88)	(37.80)	(91.34)	36.43	(0.87)	15.24	(68.63)	10.09	-	-	-	-	-
- Government's deposits	700.00	-19.55%	(136.88)	(37.80)	(91.34)	36.43	(0.87)	15.24	(68.63)	10.09	-	-	-	-	-
3. OUTSTANDING OPERATIONS	-	...	(3,485.91)	(428.43)	318.12	(349.30)	(2,075.94)	(689.28)	(186.88)	(74.21)	-	-	-	-	-
Error	-	...	0.00	(0.00)	-	0.00	-	(0.00)	0.00	(0.00)	-	-	-	-	-
Exchange rate (R/\$)	-	...	-	4,066	4,066	4,050	4,046	4,062	4,070	4,099	-	-	-	-	-
Provincial revenue	2,859.65	62.75%	1,794.49	124.30	184.45	890.92	142.30	167.75	190.85	93.91	-	-	-	-	-
o.w. provincial tax revenue	1,584.13	43.41%	687.62	114.18	93.45	125.16	106.56	85.31	119.13	43.83	-	-	-	-	-
o.w. prov. non-tax revenue	247.12	40.10%	99.09	6.78	10.93	3.91	19.87	11.67	25.02	20.91	-	-	-	-	-
o.w. prov. Transfer from central	1,028.40	97.99%	1,007.78	3.34	80.07	761.85	15.87	70.78	46.69	29.17	-	-	-	-	-
Provincial expenditure	2,153.38	46.55%	1,002.31	9.31	143.26	126.52	164.10	176.77	195.16	187.19	-	-	-	-	-
o.w. wage and salary	692.19	49.95%	345.74	8.80	46.66	63.09	78.64	29.23	68.10	51.21	-	-	-	-	-

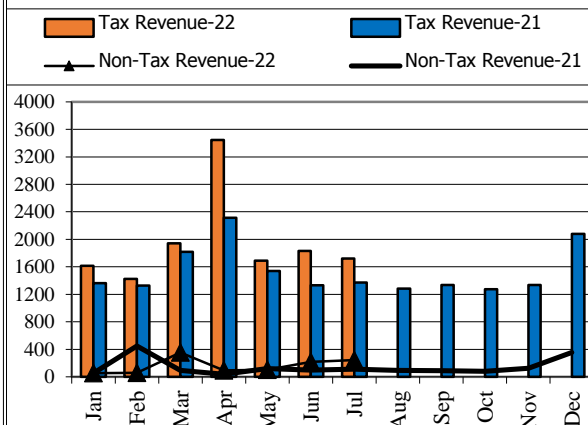
TOFE : BUDGET EXECUTION OF 2022															
	2022 C.B.L.	Total Act /BL2022	Total Act	Jan-22	Feb-22	Mar-22	Apr-22	Apr-22	Jun-22	Jul-22	Aug-22	Sep-22	Oct-22	Nov-22	Dec-22
o.w. non-wage	1,267.52	48.98%	620.82	0.51	96.59	63.43	85.46	145.00	106.18	123.65	-	-	-	-	-
o.w. investment	193.68	18.46%	35.76	-	-	-	-	2.54	20.88	12.34	-	-	-	-	-
Provincial Balance	<b>706.27</b>	112.16%	792.18	114.99	41.20	764.40	(21.80)	(9.01)	(4.32)	(93.28)	-	-	-	-	-
Contribution from casino and Lottery	150.92	11.88%	17.93	1.21	0.36	3.10	3.55	3.19	3.16	3.35	-	-	-	-	-

## CHARTS

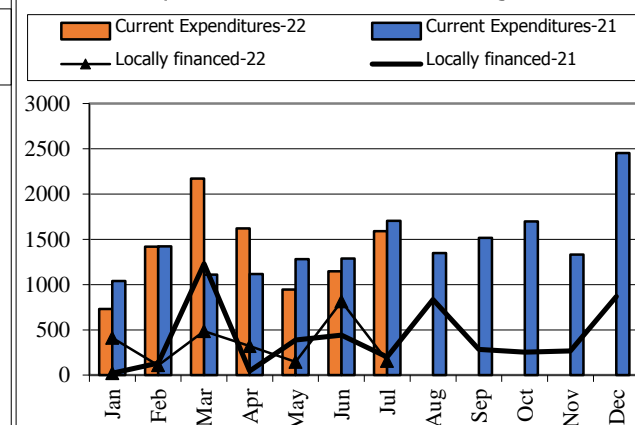
Revenue and Trade Relate Tax 2021-2022



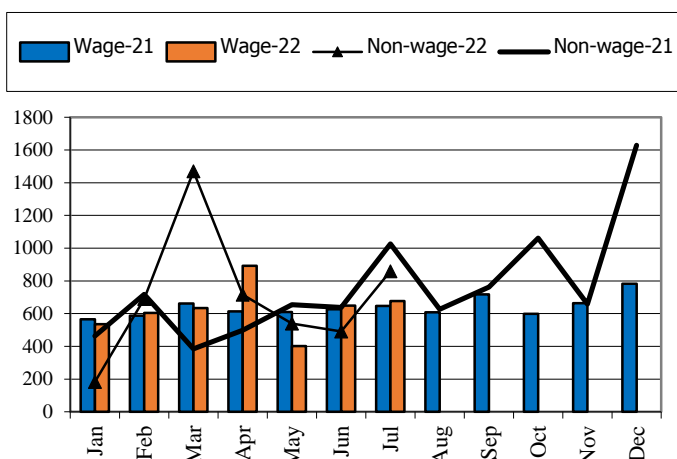
Tax and Non Tax Revenue 2021-2022



Current Expenditures and Domestic Financing 2021-2022



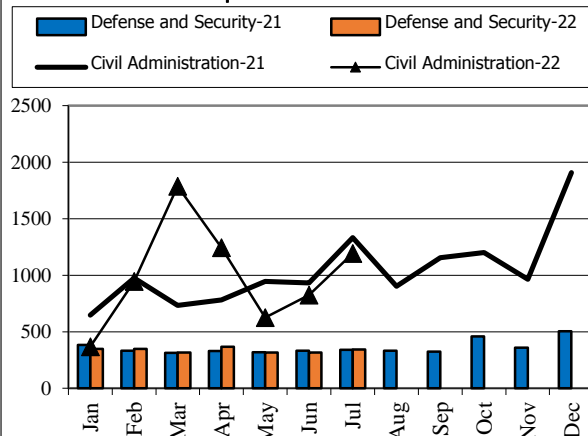
Wage and Non-wage 2021-2022



Source: MEF

Defense and Security and Civil Administrative

Expenditure 2021-2022



Multilateral and Bilateral Disbursements 2021-2022

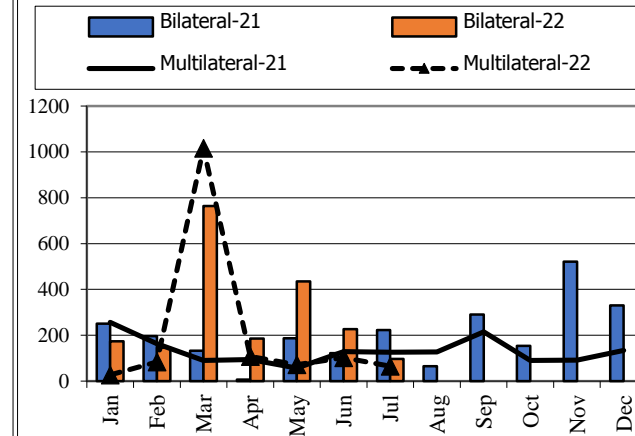


TABLE OF MINISTRY AND INSTITUTION SPENDING OF 2022															
	2022 C.B.L.	Total Act /BL2022	Total Act	Jan-22	Feb-22	Mar-22	Apr-22	May-22	Jun-22	Jul-22	Aug-22	Sep-22	Oct-22	Nov-22	Dec-22
<b>Total Current Expenditures</b>	<b>19,111,704</b>	<b>50.36%</b>	<b>9,624,574</b>	<b>730,697</b>	<b>1,417,689</b>	<b>2,171,842</b>	<b>1,618,739</b>	<b>946,523</b>	<b>1,147,600</b>	<b>1,591,484</b>					
<b>I. General Administration</b>	<b>1,916,131</b>	<b>55.66%</b>	<b>1,066,493</b>	<b>68,772</b>	<b>166,110</b>	<b>153,719</b>	<b>224,427</b>	<b>100,204</b>	<b>182,327</b>	<b>170,933</b>	-	-	-	-	-
01. Royal Palace	77,887	53.22%	41,451	6,032	4,733	8,869	4,273	5,961	5,913	5,671	-	-	-	-	-
02. National Assembly	147,552	62.96%	92,900	-	36,162	7,708	32,647	416	7,998	7,970	-	-	-	-	-
03. Senate	69,866	74.68%	52,178	19,288	-	-	14,389	112	3,503	14,886	-	-	-	-	-
04. Counstitutional Council	12,485	76.47%	9,548	2,851	-	723	2,551	620	-	2,802	-	-	-	-	-
05.1 Council of Minister	363,842	50.63%	184,207	10,466	26,312	41,258	32,586	23,918	31,539	18,129	-	-	-	-	-
05.4 CDC	11,365	40.44%	4,596	147	35	810	685	667	1,064	1,186	-	-	-	-	-
08. Relations Assembly and Inspections	38,027	50.93%	19,368	1,622	1,828	2,814	4,280	2,480	3,488	2,855	-	-	-	-	-
09. Foreign Affairs and Int'l Cooperation	158,079	48.14%	76,097	1,972	22,302	15,965	15,262	3,166	5,132	12,297	-	-	-	-	-
10. Economy and Finance	452,594	64.79%	293,223	13,205	58,716	51,219	31,820	25,856	42,520	69,886	-	-	-	-	-
14. Planning	93,823	44.54%	41,791	3,478	4,444	5,084	9,953	5,979	7,359	5,493	-	-	-	-	-
28. Urbanization and Construction	106,757	29.60%	31,602	2,783	3,708	4,321	7,222	2,289	5,605	5,674	-	-	-	-	-
30. National Election Committee	276,042	59.66%	164,688.69	2,238	2,741	8,503	53,674	22,493	58,983	16,057	-	-	-	-	-
31. National Audit Authority	12,310	47.52%	5,850	685	685	801	1,420	843	1,090	325	-	-	-	-	-
33.1 Anti-corruption Authority	41,872	56.90%	23,826	2,264	2,264	2,509	7,522	2,414	2,655	4,197	-	-	-	-	-
34. Public Function	53,630	46.93%	25,167	1,739	2,180	3,133	6,143	2,989	5,478	3,505	-	-	-	-	-
<b>II. Defense and Security</b>	<b>4,675,287</b>	<b>51.63%</b>	<b>2,413,789</b>	<b>353,784</b>	<b>355,929</b>	<b>324,070</b>	<b>378,815</b>	<b>322,638</b>	<b>325,941</b>	<b>352,613</b>	-	-	-	-	-
06. National Defense	2,529,616	53.10%	1,343,315	176,635	200,992	181,403	212,448	178,858	187,576	205,403	-	-	-	-	-
07.1 Interior - Public Security	1,684,474	50.02%	842,617	154,651	125,088	106,274	107,662	113,276	122,684	112,983	-	-	-	-	-
07.2 Interior-Administration	294,673	57.16%	168,428	17,559	22,255	29,018	46,080	23,606	4,930	24,981	-	-	-	-	-
26. Justice	166,524	35.69%	59,428	4,940	7,593	7,375	12,625	6,899	10,751	9,246	-	-	-	-	-
<b>III. Social Administrative</b>	<b>6,451,813</b>	<b>50.27%</b>	<b>3,243,371</b>	<b>264,278</b>	<b>323,680</b>	<b>651,671</b>	<b>595,684</b>	<b>414,642</b>	<b>518,042</b>	<b>475,375</b>	-	-	-	-	-
11. Information	76,054	55.11%	41,915	3,138	3,272	7,929	11,979	2,463	6,935	6,199	-	-	-	-	-
12. Public Health	1,341,377	42.93%	575,901	7,330	15,193	139,702	57,326	273,175	53,278	29,896	-	-	-	-	-
16. Education, Youth and Sport	3,040,826	50.54%	1,536,765	133,415	176,140	224,325	357,326	115,723	267,456	262,380	-	-	-	-	-
18. Culture and Fine-Arts	158,060	62.15%	98,242	3,704	4,151	22,466	10,089	3,203	34,442	20,188	-	-	-	-	-
19. Environment	80,849	45.08%	36,448	2,844	4,811	5,533	9,941	4,514	5,046	3,760	-	-	-	-	-
21. Social Affair & Veteran	1,412,862	57.28%	809,286	103,835	107,185	230,870	120,138	6,576	126,377	114,306	-	-	-	-	-
23. Public Worship and Religion	64,818	46.64%	30,229	1,884	2,807	3,227	6,209	1,912	7,392	6,797	-	-	-	-	-
24. Woman Affairs	43,074	55.33%	23,833	1,590	1,510	3,919	4,976	2,662	3,990	5,186	-	-	-	-	-
32. Labour and Vocational Training	233,893	38.80%	90,752	6,539	8,610	13,701	17,701	4,415	13,126	26,661	-	-	-	-	-
<b>IV. Economy Administrative</b>	<b>1,457,206</b>	<b>36.89%</b>	<b>537,583</b>	<b>26,664</b>	<b>56,029</b>	<b>77,159</b>	<b>94,230</b>	<b>74,305</b>	<b>98,018</b>	<b>111,178</b>	-	-	-	-	-



TABLE OF MINISTRY AND INSTITUTION SPENDING OF 2022															
	2022 C.B.L.	Total Act /BL2022	Total Act	Jan-22	Feb-22	Mar-22	Apr-22	May-22	Jun-22	Jul-22	Aug-22	Sep-22	Oct-22	Nov-22	Dec-22
05.3 Civil Aviation Secretariate	42,020	33.65%	14,141	1,342	1,337	1,383	3,016	2,402	2,220	2,441	-	-	-	-	-
13. Industry, Mines and Energy	58,042	32.07%	18,614	1,331	1,658	2,577	3,799	2,086	3,426	3,736	-	-	-	-	-
15. Commerce	117,685	37.31%	43,906	2,902	3,474	5,896	8,611	2,621	10,369	10,033	-	-	-	-	-
17. Agriculture, Forestry and Fishery	249,327	50.57%	126,088	6,829	11,235	21,574	29,796	10,733	24,478	21,443	-	-	-	-	-
20. Rural Development	178,895	19.68%	35,199	2,009	3,149	4,338	6,032	2,885	7,013	9,771	-	-	-	-	-
22. Posts and Telecommunications	116,331	63.03%	73,322	1,851	18,694	2,997	4,951	18,627	15,903	10,298	-	-	-	-	-
25. Public Works and Transport	405,228	28.16%	114,132	5,044	9,049	19,802	16,901	19,489	13,844	30,003	-	-	-	-	-
27. Tourism	74,578	57.72%	43,045	1,672	2,326	7,426	5,867	9,114	5,744	10,896	-	-	-	-	-
29. Water Resources and Meteorology	158,317	27.50%	43,531	2,027	2,927	7,990	8,378	4,159	10,427	7,623	-	-	-	-	-
35. Industry and Handicrafts	56,783	45.09%	25,606	1,656	2,180	3,176	6,880	2,187	4,593	4,933	-	-	-	-	-
<b>V. Miscellaneous</b>	<b>4,611,267</b>	51.25%	<b>2,363,339</b>	<b>17,198</b>	<b>515,941</b>	<b>965,225</b>	<b>325,583</b>	<b>34,733</b>	<b>23,272</b>	<b>481,386</b>	-	-	-	-	-
99.Unallocated Expenditure	4,611,267	51.25%	2,363,339	17,198	515,941	965,225	325,583	34,733	23,272	481,386	-	-	-	-	-

## **Report preparation Note**



The Implementation of State Budget (TOFE) in July 2022 is compiled based on the preliminary data with the cut-off date as the followings:

- 1.The Revenue Data of the Budgetary Central Government Level (Line Ministries and Line Departments) provided by General Department Of National Treasury (GDNT) and FMIS System, was updated on 16th August, 2022
- 2.The Revenue Data of the Local Government Level (Municipal/ Provincial Level) provided by GDNT and FMIS System, was updated on 16th August, 2022
- 3.The Expenditure Data of the Budgetary Central Government Level (Line Ministries and Line Departments) provided by GDNT and FMIS System, was updated on 17th August, 2022
- 4.The Expenditure Data of the Local Government Level (Municipal/ Provincial Level) provided by GDNT and FMIS System, was updated on 20th August, 2022
- 5.The Trail Balance Report of the Budgetary Central Government Level (Line Ministries and Line Departments) provided by GDNT and FMIS System, was updated on 20th August, 2022
- 6.The Trail Balance Report of the Local Government Level (Municipal/ Provincial Level) provided by GDNT and FMIS System, was updated on 20th August, 2022
- 7.The Loan & Grant Data provided by General Department of International Cooperation and Debt Management (GDICDM), was updated on 17th August, 2022
- 8.The Multilateral & Bilateral Data downloaded from DMFAS System of GDICDM, was updated on 18th August, 2022
- 9.The Credit Bank Operations Data provided by National Bank of Cambodia (NBC), was updated on 5th August, 2022.

TOFE report will be updated in the next release of the following month.

