



ព្រះរាជាណាចក្រកម្ពុជា  
ជាតិ សាសនា ព្រះមហាក្សត្រ  
KINGDOM OF CAMBODIA  
Nation Religion King

ក្រសួងសេដ្ឋកិច្ច និង ហិរញ្ញវត្ថុ

MINISTRY OF ECONOMY AND FINANCE

N°.....MEF/.....

# State Budget Implementation

February, 2022

Content	Page
1. Brief	1
2. TOFE	2
3. Table of Ministry and Institution Spending	6
4. Note: Report preparation	8

## 1. Brief Note

Taking into consideration the current economic conditions of the Cambodian economy, the 2022 budget law has been prepared in line with the priorities of restoring and promoting the growth and revitalization of the Cambodian economy – society, expecting a 5.6 percent growth rate in 2022. As a result, the state budget was implemented as follows:

**As of February 2022, the implementation of the domestic revenue of the Budgetary Central Government (BCG) reached 3,171 billion riels, equivalent to 14.26% of the 2022 budget law, which is similar to the implementation in the same period in 2021.** Of which, tax revenue reached 15.17% and non-tax revenue reached 5.35% of the 2022 budget law. Based on the historical trends of revenue performance over the past years, coupled with the recovery of Cambodian socio-economic activities, the revenue performance of 2022 is on track to meet targets set out in the 2022 budget law.

**As of February 2022, the implementation of total expenditure of the BCG reached 3,101 billion riels, equivalent to 9.97% of the 2022 budget law, a decrease of 7.34%,** of which current expenditure reached 2,148 billion riels decreased by 12.67%, while capital expenditure reached 953 billion Riels, an increase of 7.43% compared to the same period of 2021. Overall, the budgeted expenditure for 2022 upholds the premise of minimizing unnecessary spending while shifting the priority to further combat the consequences of the Covid-19 pandemic.

**Amid the COVID-19 pandemic, the Royal government has carefully and effectively managed and utilized the total financing, which is able to sustain the above implementations in a timely manner.** As of February 2022, the total implementation of foreign financing reached 192 billion riels, or 2.81% of the budget law, while the total government deposits amounted to 129 billion riels.

**\*\*X\*\***

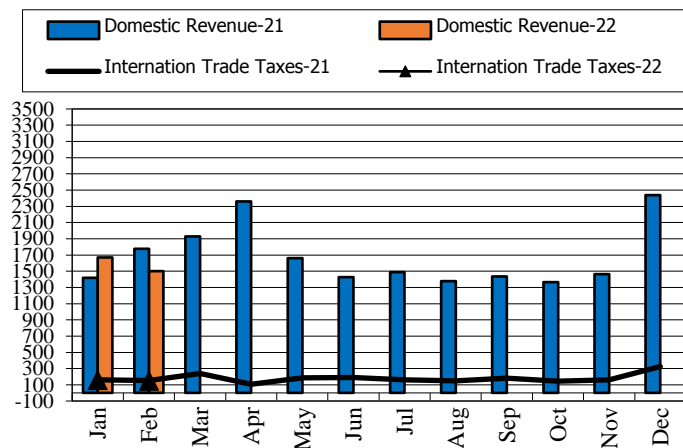
TOFE : BUDGET EXECUTION OF 2022															
	2022 C.B.L.	Total Act /BL2022	Total Act	Jan-22	Feb-22	Mar-22	Apr-22	Apr-22	Jun-22	Jul-22	Aug-22	Sep-22	Oct-22	Nov-22	Dec-22
<b>I. DOMESTIC REVENUE</b>	<b>22,243.10</b>	<b>14.26%</b>	<b>3,171.09</b>	<b>1,668.11</b>	<b>1,502.98</b>	-	-	-	-	-	-	-	-	-	-
<b>1.CURRENT REVENUE</b>	<b>22,157.34</b>	<b>14.31%</b>	<b>3,171.09</b>	<b>1,668.11</b>	<b>1,502.98</b>	-	-	-	-	-	-	-	-	-	-
<b>a. TAX REVENUE</b>	<b>20,227.01</b>	<b>15.17%</b>	<b>3,067.83</b>	<b>1,613.29</b>	<b>1,454.53</b>	-	-	-	-	-	-	-	-	-	-
<b>Domestic tax revenue</b>	<b>17,815.30</b>	<b>15.48%</b>	<b>2,758.49</b>	<b>1,454.19</b>	<b>1,304.31</b>	-	-	-	-	-	-	-	-	-	-
Direct Tax (income tax, profits tax)	5,481.00	17.26%	945.86	535.06	410.80	-	-	-	-	-	-	-	-	-	-
Indirect Tax	12,334.30	14.70%	1,812.63	919.13	893.50	-	-	-	-	-	-	-	-	-	-
o.w/ - Excise Tax on specific goods	1,000.00	19.47%	194.72	99.40	95.32	-	-	-	-	-	-	-	-	-	-
o.w/ -Special Excise Tax(petroleum,others)	4,050.30	12.85%	520.50	263.84	256.66	-	-	-	-	-	-	-	-	-	-
o.w/ - Excise Tax on specific services	75.00	21.30%	15.97	5.99	9.99	-	-	-	-	-	-	-	-	-	-
Other tax revenues	160.00	12.10%	19.36	9.31	10.05	-	-	-	-	-	-	-	-	-	-
<b>Taxes on international trade</b>	<b>2,411.71</b>	<b>12.83%</b>	<b>309.33</b>	<b>159.11</b>	<b>150.23</b>	-	-	-	-	-	-	-	-	-	-
Taxes and duties on imports	2,371.25	13.63%	300.62	155.05	145.57	-	-	-	-	-	-	-	-	-	-
April, 2021	1,687.60	13.63%	230.01	118.26	111.75	-	-	-	-	-	-	-	-	-	-
-Customs duties on petroleum products	265.30	10.38%	27.55	14.55	13.00	-	-	-	-	-	-	-	-	-	-
-Additional tax on oil product - Road maintenance	370.00	9.32%	34.48	17.78	16.70	-	-	-	-	-	-	-	-	-	-
-others	48.35	17.75%	8.58	4.46	4.12	-	-	-	-	-	-	-	-	-	-
Taxes and duties on exports	40.46	21.54%	8.71	4.06	4.66	-	-	-	-	-	-	-	-	-	-
o.w/-Tax on timber exports	10.40	25.92%	2.70	1.30	1.40	-	-	-	-	-	-	-	-	-	-
-Tax on rubber exports	17.10	23.19%	3.97	1.79	2.17	-	-	-	-	-	-	-	-	-	-
-Tax on export of agricultural products	12.80	15.80%	2.02	0.95	1.07	-	-	-	-	-	-	-	-	-	-
<b>b. NON TAX REVENUE</b>	<b>1,930.34</b>	<b>5.35%</b>	<b>103.27</b>	<b>54.82</b>	<b>48.45</b>	-	-	-	-	-	-	-	-	-	-
<b>State Property Revenue</b>	<b>173.95</b>	<b>13.76%</b>	<b>23.94</b>	<b>18.75</b>	<b>5.20</b>	-	-	-	-	-	-	-	-	-	-
Concession and rental land	166.42	14.39%	23.94	18.74717	5.20	-	-	-	-	-	-	-	-	-	-
Public Enterprises Income	7.53	0.00%	-	-	-	-	-	-	-	-	-	-	-	-	-
<b>Income from Sales, Rental of Properties and Services</b>	<b>1,425.00</b>	<b>4.46%</b>	<b>63.61</b>	<b>35.05</b>	<b>28.56</b>	-	-	-	-	-	-	-	-	-	-
Income of administrative public enterprises -operational services (for profit)	550.43	1.25%	6.87	0.71	6.17	-	-	-	-	-	-	-	-	-	-
Sales of Property of Public Administration	94.82	11.08%	10.51	6.12	4.39	-	-	-	-	-	-	-	-	-	-
Administrative fees	508.68	6.70%	34.09	18.09	16.00	-	-	-	-	-	-	-	-	-	-
Sales of Services	37.90	2.13%	0.81	0.15	0.66	-	-	-	-	-	-	-	-	-	-
Other transaction fees	201.08	1.36%	2.74	2.47	0.27	-	-	-	-	-	-	-	-	-	-
Other Rental of immovable properties	32.09	26.76%	8.59	7.51	1.07	-	-	-	-	-	-	-	-	-	-
<b>Other non tax</b>	<b>331.39</b>	<b>4.74%</b>	<b>15.72</b>	<b>1.02</b>	<b>14.70</b>	-	-	-	-	-	-	-	-	-	-
o.w/ Other exceptional revenues	-	...	0.27	0.27	-	-	-	-	-	-	-	-	-	-	-
<b>2. CAPITAL REVENUE</b>	<b>85.76</b>	<b>0.00%</b>	<b>-</b>	<b>-</b>	<b>-</b>	-	-	-	-	-	-	-	-	-	-
Other financial assets	85.76	0.00%	-	-	-	-	-	-	-	-	-	-	-	-	-
<b>II. BUDGET EXPENDITURE</b>	<b>31,099.21</b>	<b>9.97%</b>	<b>3,101.30</b>	<b>1,388.93</b>	<b>1,712.38</b>	-	-	-	-	-	-	-	-	-	-
<b>1. CURRENT EXPENDITURE</b>	<b>19,111.70</b>	<b>11.24%</b>	<b>2,148.39</b>	<b>730.70</b>	<b>1,417.69</b>	-	-	-	-	-	-	-	-	-	-

TOFE : BUDGET EXECUTION OF 2022															
	2022 C.B.L.	Total Act /BL2022	Total Act	Jan-22	Feb-22	Mar-22	Apr-22	Apr-22	Jun-22	Jul-22	Aug-22	Sep-22	Oct-22	Nov-22	Dec-22
<b>a. Wages</b>	<b>8,020.64</b>	<b>14.19%</b>	<b>1,138.44</b>	<b>534.54</b>	<b>603.90</b>	-	-	-	-	-	-	-	-	-	-
Personnel charges-civil administrative	4,491.12	12.90%	579.52	256.31	323.21	-	-	-	-	-	-	-	-	-	-
o.w/ Diplomatic salary	5.15	19.07%	0.98	-	0.98	-	-	-	-	-	-	-	-	-	-
Personnel charges-national defence and security	3,529.52	15.84%	558.92	278.23	280.69	-	-	-	-	-	-	-	-	-	-
<b>b. Non wage</b>	<b>11,091.06</b>	<b>9.11%</b>	<b>1,009.94</b>	<b>196.16</b>	<b>813.79</b>	-	-	-	-	-	-	-	-	-	-
<b>-Purchases</b>	<b>1,434.02</b>	<b>8.04%</b>	<b>115.24</b>	<b>55.70</b>	<b>59.54</b>	-	-	-	-	-	-	-	-	-	-
Maintenance supplies	251.27	1.84%	4.63	0.67	3.96	-	-	-	-	-	-	-	-	-	-
Administration supplies	239.05	0.55%	1.31	0.42	0.89	-	-	-	-	-	-	-	-	-	-
Food and agricultural products	175.21	17.32%	30.35	-	30.35	-	-	-	-	-	-	-	-	-	-
Clothing and decoration	147.51	0.66%	0.97	0.27	0.70	-	-	-	-	-	-	-	-	-	-
Small tools, material, furniture and equip.	320.52	23.19%	74.32	53.60	20.73	-	-	-	-	-	-	-	-	-	-
Energy and water	149.01	2.41%	3.59	0.75	2.84	-	-	-	-	-	-	-	-	-	-
Health supplies and equipment	148.32	0.05%	0.08	-	0.08	-	-	-	-	-	-	-	-	-	-
Other supplies	3.12	0.00%	-	-	-	-	-	-	-	-	-	-	-	-	-
<b>-Services</b>	<b>1,649.60</b>	<b>3.25%</b>	<b>53.55</b>	<b>6.33</b>	<b>47.22</b>	-	-	-	-	-	-	-	-	-	-
o.w/ -Rentals and charges (furniture)	31.75	35.42%	11.25	0.16	11.09	-	-	-	-	-	-	-	-	-	-
-Maintenance and repairs	897.08	0.82%	7.38	0.80	6.58	-	-	-	-	-	-	-	-	-	-
<b>-Financial charges</b>	<b>645.98</b>	<b>21.27%</b>	<b>137.38</b>	<b>13.87</b>	<b>123.50</b>	-	-	-	-	-	-	-	-	-	-
-Interests on external debt	645.98	21.19%	136.88	13.38	123.50	-	-	-	-	-	-	-	-	-	-
<b>-Social Benefit</b>	<b>2,751.83</b>	<b>8.75%</b>	<b>240.67</b>	<b>114.38</b>	<b>126.29</b>	-	-	-	-	-	-	-	-	-	-
o.w/- Social Security Benefits	1,260.51	15.85%	199.75	100.51	99.24	-	-	-	-	-	-	-	-	-	-
-Social Assistance to citizens	1,288.54	2.12%	27.30	10.29	17.01	-	-	-	-	-	-	-	-	-	-
-Social Assistance to social and cultural entities	145.88	9.31%	13.58	3.58	10.00	-	-	-	-	-	-	-	-	-	-
-Other social benefits	11.25	0.00%	-	-	-	-	-	-	-	-	-	-	-	-	-
<b>-Grants</b>	<b>2,844.78</b>	<b>14.65%</b>	<b>416.63</b>	<b>3.33</b>	<b>413.30</b>	-	-	-	-	-	-	-	-	-	-
<b>-Other non wage</b>	<b>1,764.85</b>	<b>2.63%</b>	<b>46.48</b>	<b>2.55</b>	<b>43.93</b>	-	-	-	-	-	-	-	-	-	-
o.w/ -Unanticipated Expense(Reserve)	1,618.26	0.00%	-	-	-	-	-	-	-	-	-	-	-	-	-
<b>2. CAPITAL</b>	<b>11,987.51</b>	<b>7.95%</b>	<b>952.92</b>	<b>658.23</b>	<b>294.69</b>	-	-	-	-	-	-	-	-	-	-
<b>Domestic Financing</b>	<b>6,174.02</b>	<b>8.38%</b>	<b>517.13</b>	<b>409.66</b>	<b>107.48</b>	-	-	-	-	-	-	-	-	-	-
Tangible fixed assets and land	6,174.02	8.38%	517.13	409.66	107.48	-	-	-	-	-	-	-	-	-	-
<b>External assistance (Project)</b>	<b>5,813.48</b>	<b>7.50%</b>	<b>435.79</b>	<b>248.57</b>	<b>187.21</b>	-	-	-	-	-	-	-	-	-	-
<b>CURRENT DEF/SURPL.comt (I.I-II.I)</b>	<b>3,045.64</b>	<b>33.58%</b>	<b>1,022.71</b>	<b>937.41</b>	<b>85.29</b>	-	-	-	-	-	-	-	-	-	-
<b>OVERALL DEF/SURPL.comt (I-II)</b>	<b>(8,856.11)</b>	<b>...</b>	<b>69.79</b>	<b>279.19</b>	<b>(209.40)</b>	-	-	-	-	-	-	-	-	-	-
<b>CURRENT DEF/SURPL.cash(comt.+3)</b>	<b>3,045.64</b>	<b>33.58%</b>	<b>1,022.71</b>	<b>937.41</b>	<b>85.29</b>	-	-	-	-	-	-	-	-	-	-
<b>OVERALL DEF/SURPL.cash (com.+3)</b>	<b>(8,856.11)</b>	<b>...</b>	<b>69.79</b>	<b>279.19</b>	<b>(209.40)</b>	-	-	-	-	-	-	-	-	-	-
<b>III. FINANCING</b>	<b>8,856.11</b>	<b>-0.79%</b>	<b>(69.79)</b>	<b>(279.19)</b>	<b>209.40</b>	-	-	-	-	-	-	-	-	-	-
<b>1. FOREIGN FINANCING</b>	<b>6,823.61</b>	<b>2.81%</b>	<b>191.83</b>	<b>188.36</b>	<b>3.46</b>	-	-	-	-	-	-	-	-	-	-

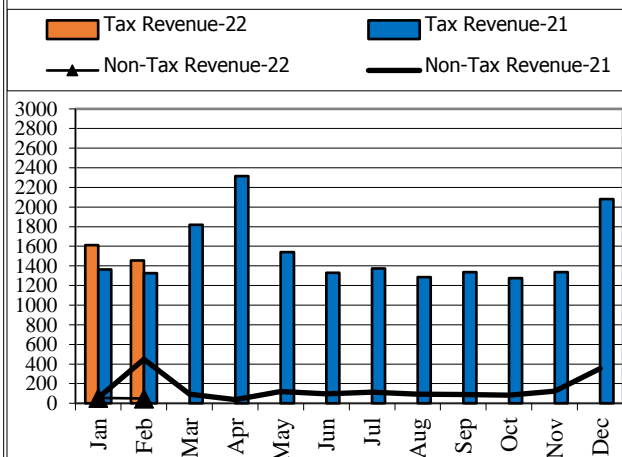
TOFE : BUDGET EXECUTION OF 2022															
	2022 C.B.L.	Total Act /BL2022	Total Act	Jan-22	Feb-22	Mar-22	Apr-22	Apr-22	Jun-22	Jul-22	Aug-22	Sep-22	Oct-22	Nov-22	Dec-22
<b>a. Budget support</b>	<b>2,487.78</b>	<b>0.00%</b>	-	-	-	-	-	-	-	-	-	-	-	-	-
<b>-Grants-budget support</b>	100.00	0.00%	-	-	-	-	-	-	-	-	-	-	-	-	-
Capital Support	100.00	0.00%	-	-	-	-	-	-	-	-	-	-	-	-	-
Bilateral grant for investment expense	100.00	0.00%	-	-	-	-	-	-	-	-	-	-	-	-	-
<b>-Debt and related liabilities-budget support</b>	2,387.78	0.00%	-	-	-	-	-	-	-	-	-	-	-	-	-
Foreign borrowing	2,387.78	0.00%	-	-	-	-	-	-	-	-	-	-	-	-	-
Foreign borrowings from multilateral agencies	1,168.28	0.00%	-	-	-	-	-	-	-	-	-	-	-	-	-
Borrowings from financial market	1,219.50	0.00%	-	-	-	-	-	-	-	-	-	-	-	-	-
<b>b. Project aid</b>	<b>5,813.48</b>	<b>9.64%</b>	<b>560.16</b>	<b>266.39</b>	<b>293.78</b>	-	-	-	-	-	-	-	-	-	-
<b>Spent</b>	<b>5,813.48</b>	<b>7.50%</b>	<b>435.79</b>	<b>248.57</b>	<b>187.21</b>	-	-	-	-	-	-	-	-	-	-
<b>-Grants</b>	<b>776.21</b>	<b>16.67%</b>	<b>129.37</b>	<b>64.68</b>	<b>64.68</b>	-	-	-	-	-	-	-	-	-	-
Bilateral grant for investment expense	776.21	16.67%	129.37	64.68	64.68	-	-	-	-	-	-	-	-	-	-
<b>-Debt and related liabilities</b>	<b>5,037.28</b>	<b>6.08%</b>	<b>306.42</b>	<b>183.89</b>	<b>122.53</b>	-	-	-	-	-	-	-	-	-	-
Foreign borrowing	5,037.28	6.08%	306.42	183.89	122.53	-	-	-	-	-	-	-	-	-	-
Foreign borrowings from multilateral agencies	2,014.91	-0.70%	(14.10)	9.48	(23.57)	-	-	-	-	-	-	-	-	-	-
Foreign borrowings from bilateral agencies	3,022.37	10.60%	320.51	174.41	146.10	-	-	-	-	-	-	-	-	-	-
<b>Pending</b>	-	...	<b>124.38</b>	<b>17.82</b>	<b>106.56</b>	-	-	-	-	-	-	-	-	-	-
<b>c. Amortization on external debts</b>	<b>(1,477.66)</b>	...	<b>(368.34)</b>	<b>(78.02)</b>	<b>(290.31)</b>	-	-	-	-	-	-	-	-	-	-
<b>2. DOMESTIC FINANCING</b>	<b>700.00</b>	<b>-18.45%</b>	<b>(129.14)</b>	<b>(37.80)</b>	<b>(91.34)</b>	-	-	-	-	-	-	-	-	-	-
<b>a. Net bank financing (monetary suvey)</b>	<b>700.00</b>	<b>-18.45%</b>	<b>(129.14)</b>	<b>(37.80)</b>	<b>(91.34)</b>	-	-	-	-	-	-	-	-	-	-
- Government's deposits	700.00	-18.45%	(129.14)	(37.80)	(91.34)	-	-	-	-	-	-	-	-	-	-
<b>3. OUTSTANDING OPERATIONS</b>	-	...	<b>(132.48)</b>	<b>(429.75)</b>	<b>297.27</b>	-	-	-	-	-	-	-	-	-	-
Error	-	...	0.00	-	0.00	-	-	-	-	-	-	-	-	-	-
Exchange rate (R/\$)	-	...	-	4,066	4,066	-	-	-	-	-	-	-	-	-	-
Provincial revenue	<b>2,859.65</b>	<b>8.72%</b>	<b>249.38</b>	<b>121.02</b>	<b>128.36</b>	-	-	-	-	-	-	-	-	-	-
o.w. provincial tax revenue	1,584.13	10.10%	160.06	114.18	45.88	-	-	-	-	-	-	-	-	-	-
o.w. prov. non-tax revenue	247.12	2.41%	5.95	3.50	2.45	-	-	-	-	-	-	-	-	-	-
o.w. prov. Transfer from central	1,028.40	8.11%	83.36	3.34	80.03	-	-	-	-	-	-	-	-	-	-
Provincial expenditure	<b>2,153.38</b>	<b>6.60%</b>	<b>142.08</b>	<b>9.09</b>	<b>133.00</b>	-	-	-	-	-	-	-	-	-	-
o.w. wage and salary	692.19	7.95%	55.00	8.57	46.42	-	-	-	-	-	-	-	-	-	-
o.w. non-wage	1,267.52	6.87%	87.09	0.51	86.58	-	-	-	-	-	-	-	-	-	-
o.w. investment	193.68	0.00%	-	-	-	-	-	-	-	-	-	-	-	-	-
Provincial Balance	<b>706.27</b>	15.19%	107.30	111.93	(4.64)	-	-	-	-	-	-	-	-	-	-
Contribution from casino and Lottery	150.92	0.81%	1.21	1.21	-	-	-	-	-	-	-	-	-	-	-

## CHARTS

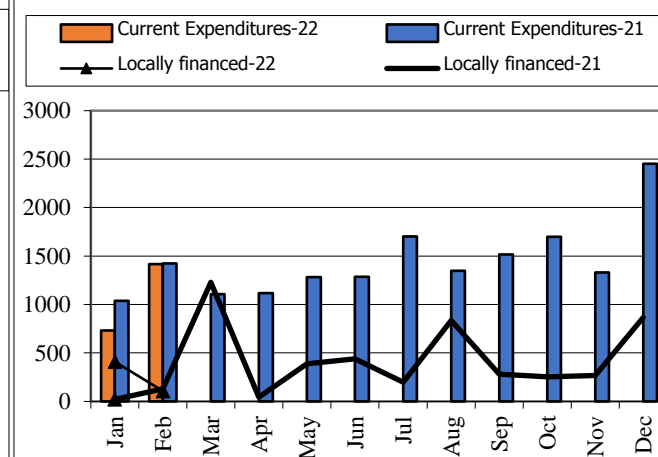
Revenue and Trade Relate Tax 2021-2022



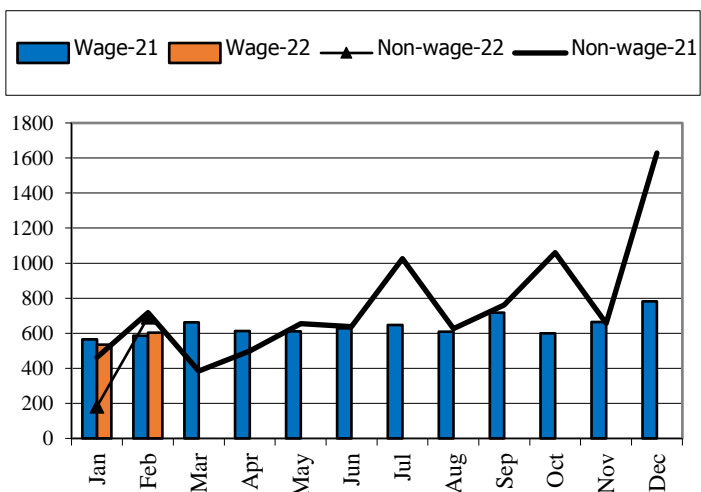
Tax and Non Tax Revenue 2021-2022



Current Expenditures and Domestic Financing 2021-2022



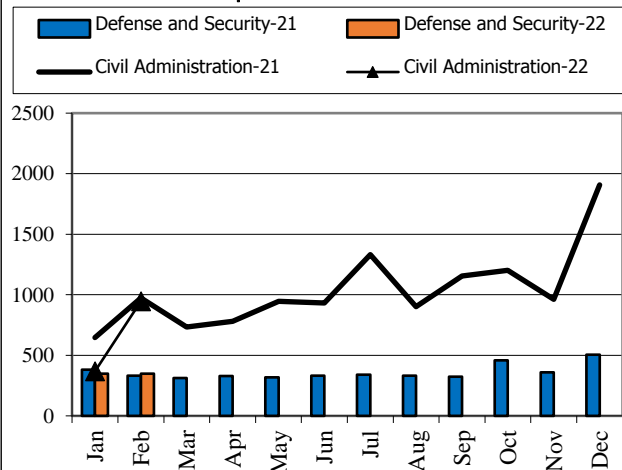
Wage and Non-wage 2021-2022



Source: MEF

Defense and Security and Civil Administrative

Expenditure 2021-2022



Multilateral and Bilateral Disbursements 2021-2022

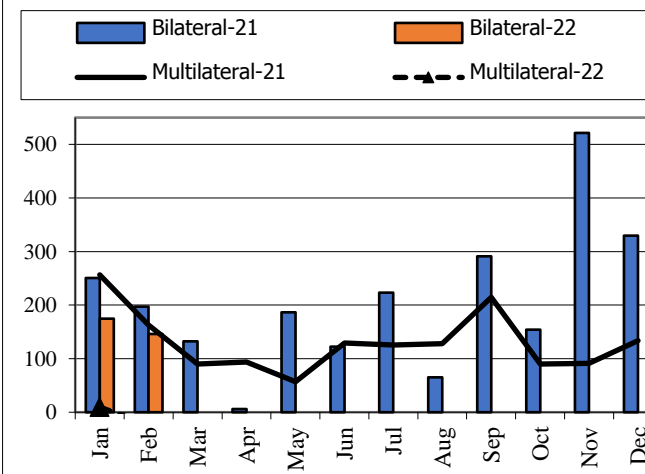


TABLE OF MINISTRY AND INSTITUTION SPENDING OF 2022															
	2022 C.B.L.	Total Act /BL2022	Total Act	Jan-22	Feb-22	Mar-22	Apr-22	May-22	Jun-22	Jul-22	Aug-22	Sep-22	Oct-22	Nov-22	Dec-22
<b>Total Current Expenditures</b>	<b>19,111,704</b>	<b>11.24%</b>	<b>2,148,385</b>	<b>730,697</b>	<b>1,417,689</b>										
<b>I. General Administration</b>	<b>1,916,131</b>	<b>12.26%</b>	<b>234,882</b>	<b>68,772</b>	<b>166,110</b>	-	-	-	-	-	-	-	-	-	-
01. Royal Palace	77,887	13.82%	10,765	6,032	4,733	-	-	-	-	-	-	-	-	-	-
02. National Assembly	147,552	24.51%	36,162	-	36,162	-	-	-	-	-	-	-	-	-	-
03. Senate	69,866	27.61%	19,288	19,288	-	-	-	-	-	-	-	-	-	-	-
04. Counstitutional Council	12,485	22.84%	2,851	2,851	-	-	-	-	-	-	-	-	-	-	-
05.1 Council of Minister	363,842	10.11%	36,778	10,466	26,312	-	-	-	-	-	-	-	-	-	-
05.4 CDC	11,365	1.61%	183	147	35	-	-	-	-	-	-	-	-	-	-
08. Relations Assembly and Inspections	38,027	9.07%	3,450	1,622	1,828	-	-	-	-	-	-	-	-	-	-
09. Foreign Affairs and Int'l Cooperation	158,079	15.36%	24,275	1,972	22,302	-	-	-	-	-	-	-	-	-	-
10. Economy and Finance	452,594	15.89%	71,922	13,205	58,716	-	-	-	-	-	-	-	-	-	-
14. Planning	93,823	8.44%	7,922	3,478	4,444	-	-	-	-	-	-	-	-	-	-
28. Urbanization and Construction	106,757	6.08%	6,491	2,783	3,708	-	-	-	-	-	-	-	-	-	-
30. National Election Committee	276,042	1.80%	4,978.60	2,238	2,741	-	-	-	-	-	-	-	-	-	-
31. National Audit Authority	12,310	11.14%	1,371	685	685	-	-	-	-	-	-	-	-	-	-
33.1 Anti-corruption Authority	41,872	10.81%	4,528	2,264	2,264	-	-	-	-	-	-	-	-	-	-
34. Public Function	53,630	7.31%	3,918	1,739	2,180	-	-	-	-	-	-	-	-	-	-
<b>II. Defense and Security</b>	<b>4,675,287</b>	<b>15.18%</b>	<b>709,713</b>	<b>353,784</b>	<b>355,929</b>	-	-	-	-	-	-	-	-	-	-
06. National Defense	2,529,616	14.93%	377,627	176,635	200,992	-	-	-	-	-	-	-	-	-	-
07.1 Interior - Public Security	1,684,474	16.61%	279,739	154,651	125,088	-	-	-	-	-	-	-	-	-	-
07.2 Interior-Administration	294,673	13.51%	39,814	17,559	22,255	-	-	-	-	-	-	-	-	-	-
26. Justice	166,524	7.53%	12,533	4,940	7,593	-	-	-	-	-	-	-	-	-	-
<b>III. Social Administrative</b>	<b>6,451,813</b>	<b>9.11%</b>	<b>587,958</b>	<b>264,278</b>	<b>323,680</b>	-	-	-	-	-	-	-	-	-	-
11. Information	76,054	8.43%	6,410	3,138	3,272	-	-	-	-	-	-	-	-	-	-
12. Public Health	1,341,377	1.68%	22,523	7,330	15,193	-	-	-	-	-	-	-	-	-	-
16. Education, Youth and Sport	3,040,826	10.18%	309,555	133,415	176,140	-	-	-	-	-	-	-	-	-	-
18. Culture and Fine-Arts	158,060	4.97%	7,855	3,704	4,151	-	-	-	-	-	-	-	-	-	-
19. Environment	80,849	9.47%	7,654	2,844	4,811	-	-	-	-	-	-	-	-	-	-
21. Social Affair & Veteran	1,412,862	14.94%	211,020	103,835	107,185	-	-	-	-	-	-	-	-	-	-
23. Public Worship and Religion	64,818	7.24%	4,692	1,884	2,807	-	-	-	-	-	-	-	-	-	-
24. Woman Affairs	43,074	7.20%	3,100	1,590	1,510	-	-	-	-	-	-	-	-	-	-
32. Labour and Vocational Training	233,893	6.48%	15,149	6,539	8,610	-	-	-	-	-	-	-	-	-	-

TABLE OF MINISTRY AND INSTITUTION SPENDING OF 2022															
	2022 C.B.L.	Total Act /BL2022	Total Act	Jan-22	Feb-22	Mar-22	Apr-22	May-22	Jun-22	Jul-22	Aug-22	Sep-22	Oct-22	Nov-22	Dec-22
<b>IV. Economy Administrative</b>	<b>1,457,206</b>	5.67%	<b>82,693</b>	<b>26,664</b>	<b>56,029</b>	-	-	-	-	-	-	-	-	-	-
05.3 Civil Aviation Secretariate	42,020	6.37%	2,679	1,342	1,337	-	-	-	-	-	-	-	-	-	-
13. Industry, Mines and Energy	58,042	5.15%	2,990	1,331	1,658	-	-	-	-	-	-	-	-	-	-
15. Commerce	117,685	5.42%	6,376	2,902	3,474	-	-	-	-	-	-	-	-	-	-
17. Agriculture, Forestry and Fishery	249,327	7.25%	18,064	6,829	11,235	-	-	-	-	-	-	-	-	-	-
20. Rural Development	178,895	2.88%	5,159	2,009	3,149	-	-	-	-	-	-	-	-	-	-
22. Posts and Telecommunications	116,331	17.66%	20,545	1,851	18,694	-	-	-	-	-	-	-	-	-	-
25. Public Works and Transport	405,228	3.48%	14,093	5,044	9,049	-	-	-	-	-	-	-	-	-	-
27. Tourism	74,578	5.36%	3,998	1,672	2,326	-	-	-	-	-	-	-	-	-	-
29. Water Resources and Meteorology	158,317	3.13%	4,954	2,027	2,927	-	-	-	-	-	-	-	-	-	-
35. Industry and Handicrafts	56,783	6.76%	3,836	1,656	2,180	-	-	-	-	-	-	-	-	-	-
<b>V. Miscellaneous</b>	<b>4,611,267</b>	11.56%	<b>533,139</b>	<b>17,198</b>	<b>515,941</b>	-	-	-	-	-	-	-	-	-	-
99.Unexpect Expenditure	4,611,267	11.56%	533,139	17,198	515,941	-	-	-	-	-	-	-	-	-	-



## Report preparation Note



The Implementation of State Budget (TOFE) in February 2022 is compiled based on the preliminary data with the cut-off date as the followings:

- 1.The Revenue Data of the Budgetary Central Government Level (Line Ministries and Line Departments) provided by General Department Of National Treasury (GDNT) and FMIS System, was updated on 18th March, 2022
- 2.The Revenue Data of the Local Government Level (Municipal/ Provincial Level) provided by GDNT and FMIS System, was updated on 18th March, 2022
- 3.The Expenditure Data of the Budgetary Central Government Level (Line Ministries and Line Departments) provided by GDNT and FMIS System, was updated on 18th March, 2022
- 4.The Expenditure Data of the Local Government Level (Municipal/ Provincial Level) provided by GDNT and FMIS System, was updated on 18th March, 2022
- 5.The Trail Balance Report of the Budgetary Central Government Level (Line Ministries and Line Departments) provided by GDNT and FMIS System, was updated on 28th March, 2022
- 6.The Trail Balance Report of the Local Government Level (Municipal/ Provincial Level) provided by GDNT and FMIS System, was updated on 28th March, 2022
- 7.The Loan & Grant Data provided by General Department of International Cooperation and Debt Management (GDICDM), was updated on 17th March, 2022
- 8.The Multilateral & Bilateral Data downloaded from DMFAS System of GDICDM, was updated on 18th March, 2022
- 9.The Credit Bank Operations Data provided by National Bank of Cambodia (NBC), was updated on 02th March, 2022.

TOFE report will be updated in the next release of the following month.

