



ព្រះរាជាណាចក្រកម្ពុជា  
ជាតិ សាសនា ព្រះមហាក្សត្រ  
KINGDOM OF CAMBODIA  
Nation Religion King

ក្រសួងសេដ្ឋកិច្ច និង ហិរញ្ញវត្ថុ

MINISTRY OF ECONOMY AND FINANCE

N°.....MEF/.....

# State Budget Implementation

June, 2021

	Page
1. Brief	1
2. TOFE	2
3. Table of Ministry and Institution Spending	7
4. Note: Report preparation	8

## **1. Brief Note on Monthly Budget Implementation of June 2021**

### **(TOFE\_GFSM1986)**

In rebuttal to the protracted impact of the February 20 community event, the Royal Government has promptly initiated a series of timely interventions, such as administrative, health, and fiscal measures, to mitigate the repercussions on social, economic development, and people's livelihoods. Consequently, numerous fiscal measures are initiated such as additional measures to address the impact of the Covid-19 crisis (round 9), execute proactive targeted spending and cost efficiency for budgetary central government expenditure, and implement a post-lockdown cash social assistance program, which will be reflected in budget implementation.

**The domestic revenue performance of the Budgetary Central Government (BCG) within the first semester of 2021 has accumulated the total of 10,571.65 Billion riels or equivalent to 53.05% of the 2021 budget law, while the revenue performance in the same period of 2020 has achieved only 46.19% of the 2020 budget law.** Although the February 20 community event has been putting pressure on the revenue collection target in 2021, the revenue collection has remained stable, especially in June 2021, the BCG has achieved the total revenue of 1,427.26 Billion Riels, of which, tax revenue and non-tax revenue implemented 7.59% and 4.45% of the 2021 budget law, a decrease of 1.18% and 4.10% respectively compared to June 2020.

**The expenditure performance of the BCG within the first semester of 2021 has accumulated the total of 11,160.64 Billion Riels, or equivalent to 38.08% of the 2021 budget law. The pace of implementation is fairly similar to the same period of 2020, though the implementation of overall expenditures in 2021 is impeded by community events on February 20.** In fact, the expenditure implementation in 2021 is at a manageable pace by minimizing unnecessary expenditures and shifting the priority to further combat the consequences of the Covid-19 pandemic. Within the first semester of 2021, the government has executed a total of 1,317.02 Billion Riels on Social Benefits or equivalent to 18.16% of current expenditure. Meanwhile, in June 2021, the BCG has executed the total expenditure of 2,038.96 Billion Riels, or has decreased by 28.34% compared to June 2020.

**Amid the COVID-19 pandemic, the implementation of the BCG financing has achieved as planned in the budget law, especially the disbursement of bilateral loans for budget support.** As of the first semester of 2021, the total implementation of foreign financing at the BCG level reached 2,054.81 Billion riels or 39.99% of the 2021 budget law, while the total government deposits amounted to 38.36 Billion riels.

**\*\*\*X\*\*\***

## TOFE : BUDGET EXECUTION OF 2021

	2021 C.B.L.	Total Act /BL2021	Total Act	Jan-21	Feb-21	Mar-21	Apr-21	May-21	Jun-21	Jul-21	Aug-21	Sep-21	Oct-21	Nov-21	Dec-21
<b>I. DOMESTIC REVENUE</b>	<b>19,927.19</b>	<b>53.05%</b>	<b>10,571.65</b>	<b>1,418.28</b>	<b>1,777.35</b>	<b>1,927.35</b>	<b>2,359.91</b>	<b>1,661.50</b>	<b>1,427.26</b>	-	-	-	-	-	-
<b>1.CURRENT REVENUE</b>	<b>19,705.98</b>	<b>53.50%</b>	<b>10,542.09</b>	<b>1,418.28</b>	<b>1,773.99</b>	<b>1,910.21</b>	<b>2,352.04</b>	<b>1,660.31</b>	<b>1,427.26</b>	-	-	-	-	-	-
<b>a. TAX REVENUE</b>	<b>17,520.00</b>	<b>55.31%</b>	<b>9,691.18</b>	<b>1,362.93</b>	<b>1,325.63</b>	<b>1,818.43</b>	<b>2,314.96</b>	<b>1,539.32</b>	<b>1,329.91</b>	-	-	-	-	-	-
<b>Domestic tax revenue</b>	<b>15,224.60</b>	<b>56.87%</b>	<b>8,658.53</b>	<b>1,203.41</b>	<b>1,172.48</b>	<b>1,579.95</b>	<b>2,208.38</b>	<b>1,352.73</b>	<b>1,141.59</b>	-	-	-	-	-	-
Direct Tax (income tax, profits tax)	4,304.00	84.58%	3,640.48	373.60	304.19	542.63	1,685.08	411.68	323.31	-	-	-	-	-	-
Indirect Tax	10,920.60	45.95%	5,018.05	829.80	868.30	1,037.32	523.30	941.05	818.28	-	-	-	-	-	-
o.w/ - Excise Tax on specific goods	870.00	46.94%	408.37	69.15	89.21	87.94	44.95	64.95	52.18	-	-	-	-	-	-
o.w/ -Special Excise Tax(petroleum,others)	3,563.80	46.99%	1,674.76	272.78	283.07	366.98	163.10	305.69	283.14	-	-	-	-	-	-
o.w/ - Excise Tax on specific services	75.00	23.70%	17.77	6.08	0.60	0.53	1.19	4.67	4.70	-	-	-	-	-	-
Other tax revenues	135.00	53.00%	71.55	12.31	13.84	12.45	9.24	12.55	11.17	-	-	-	-	-	-
<b>Taxes on international trade</b>	<b>2,295.40</b>	<b>44.99%</b>	<b>1,032.65</b>	<b>159.53</b>	<b>153.15</b>	<b>238.48</b>	<b>106.58</b>	<b>186.59</b>	<b>188.32</b>	-	-	-	-	-	-
Taxes and duties on imports	2,283.70	46.20%	1,012.91	156.89	150.79	233.56	103.46	182.84	185.37	-	-	-	-	-	-
April, 2021	1,546.60	46.20%	714.60	112.87	113.51	142.24	75.66	136.68	133.64	-	-	-	-	-	-
-Customs duties on petroleum products	331.00	34.44%	114.01	17.74	14.13	30.89	12.72	18.49	20.04	-	-	-	-	-	-
-Additional tax on oil product - Road maintenance	361.00	44.36%	160.14	22.93	17.08	54.76	12.42	25.21	27.74	-	-	-	-	-	-
-others	45.10	53.57%	24.16	3.35	6.06	5.68	2.66	2.46	3.95	-	-	-	-	-	-
Taxes and duties on exports	11.70	168.65%	19.73	2.64	2.35	4.92	3.12	3.75	2.95	-	-	-	-	-	-
o.w/-Tax on timber exports	4.50	118.71%	5.34	1.00	0.80	1.38	1.17	0.88	0.10	-	-	-	-	-	-
-Tax on rubber exports	2.70	302.75%	8.17	0.81	0.98	2.58	0.84	1.53	1.43	-	-	-	-	-	-
-Tax on export of agricultural products	4.30	142.68%	6.14	0.80	0.56	0.94	1.10	1.32	1.40	-	-	-	-	-	-
<b>b. NON TAX REVENUE</b>	<b>2,185.98</b>	<b>38.93%</b>	<b>850.91</b>	<b>55.35</b>	<b>448.36</b>	<b>91.78</b>	<b>37.08</b>	<b>120.99</b>	<b>97.35</b>	-	-	-	-	-	-
<b>State Property Revenue</b>	<b>205.08</b>	<b>164.14%</b>	<b>336.62</b>	<b>11.97</b>	<b>294.22</b>	<b>6.72</b>	<b>9.06</b>	<b>8.82</b>	<b>5.83</b>	-	-	-	-	-	-
Concession and rental land	185.14	24.27%	44.93	11.96780	5.44	6.72	9.06	6.07	5.67	-	-	-	-	-	-
Public Enterprises Income	19.94	1462.50%	291.68	-	288.78	-	-	2.75	0.15	-	-	-	-	-	-
<b>Income from Sales, Rental of Properties and Services</b>	<b>1,668.81</b>	<b>21.43%</b>	<b>357.61</b>	<b>39.96</b>	<b>123.11</b>	<b>64.27</b>	<b>10.54</b>	<b>74.05</b>	<b>45.67</b>	-	-	-	-	-	-
Income of administrative public enterprises -operational services (for profit)	627.07	15.90%	99.71	0.43	38.65	24.86	0.38	30.10	5.30	-	-	-	-	-	-
Sales of Property of Public Administration	110.03	39.31%	43.25	6.21	6.50	9.90	2.05	14.07	4.53	-	-	-	-	-	-
Administrative fees	594.12	18.74%	111.35	15.11	15.77	19.46	4.97	25.73	30.31	-	-	-	-	-	-
Sales of Services	41.80	11.19%	4.68	0.87	0.94	0.70	0.35	0.54	1.27	-	-	-	-	-	-
Other transaction fees	266.07	31.42%	83.61	10.98	58.75	6.45	1.27	2.77	3.40	-	-	-	-	-	-
Other Rental of immovable properties	29.72	50.52%	15.02	6.36	2.50	2.91	1.52	0.85	0.87	-	-	-	-	-	-
<b>Other non tax</b>	<b>312.09</b>	<b>50.20%</b>	<b>156.68</b>	<b>3.43</b>	<b>31.03</b>	<b>20.79</b>	<b>17.48</b>	<b>38.11</b>	<b>45.85</b>	-	-	-	-	-	-
o.w/ Other exceptional revenues	-	...	40.26	2.39	7.79	8.57	1.25	0.98	19.28	-	-	-	-	-	-
<b>2. CAPITAL REVENUE</b>	<b>221.20</b>	<b>13.36%</b>	<b>29.56</b>	-	<b>3.36</b>	<b>17.15</b>	<b>7.87</b>	<b>1.19</b>	-	-	-	-	-	-	-
Other financial assets	221.20	13.36%	29.56	-	3.36	17.15	7.87	1.19	-	-	-	-	-	-	-
<b>II. BUDGET EXPENDITURE</b>	<b>29,306.15</b>	<b>38.08%</b>	<b>11,160.64</b>	<b>1,454.13</b>	<b>1,775.06</b>	<b>2,631.87</b>	<b>1,334.87</b>	<b>1,925.75</b>	<b>2,038.96</b>	-	-	-	-	-	-
<b>1. CURRENT EXPENDITURE</b>	<b>17,446.84</b>	<b>41.58%</b>	<b>7,253.97</b>	<b>1,037.43</b>	<b>1,422.65</b>	<b>1,108.53</b>	<b>1,117.20</b>	<b>1,280.89</b>	<b>1,287.25</b>	-	-	-	-	-	-

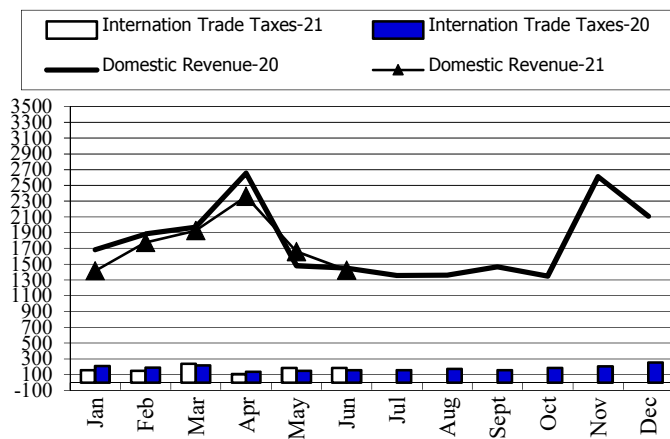
## TOFE : BUDGET EXECUTION OF 2021

	2021 C.B.L.	Total Act /BL2021	Total Act	Jan-21	Feb-21	Mar-21	Apr-21	May-21	Jun-21	Jul-21	Aug-21	Sep-21	Oct-21	Nov-21	Dec-21
<b>a. Wages</b>	<b>7,980.85</b>	<b>45.94%</b>	<b>3,666.74</b>	<b>566.01</b>	<b>586.77</b>	<b>662.50</b>	<b>613.80</b>	<b>610.42</b>	<b>627.24</b>	-	-	-	-	-	-
Personnel charges-civil administrative	4,433.17	44.41%	1,968.95	286.34	307.14	377.91	330.28	326.93	340.36	-	-	-	-	-	-
o.w/ Diplomatic salary	5.15	50.28%	2.59	1.39	-	1.12	-	-	0.07	-	-	-	-	-	-
Personnel charges-national defence and security	3,547.68	47.86%	1,697.79	279.67	279.63	284.59	283.53	283.50	286.89	-	-	-	-	-	-
<b>b. Non wage</b>	<b>9,465.99</b>	<b>37.90%</b>	<b>3,587.22</b>	<b>471.42</b>	<b>835.89</b>	<b>446.04</b>	<b>503.39</b>	<b>670.47</b>	<b>660.01</b>	-	-	-	-	-	-
<b>-Purchases</b>	<b>1,422.55</b>	<b>29.90%</b>	<b>425.34</b>	<b>85.77</b>	<b>46.86</b>	<b>33.66</b>	<b>52.21</b>	<b>97.58</b>	<b>109.27</b>	-	-	-	-	-	-
Maintenance supplies	240.88	9.57%	23.04	0.02	3.63	2.63	6.59	5.17	4.99	-	-	-	-	-	-
Administration supplies	203.71	19.78%	40.29	0.04	2.54	5.71	5.79	12.14	14.06	-	-	-	-	-	-
Food and agricultural products	170.88	51.53%	88.06	-	33.26	9.45	25.08	9.92	10.34	-	-	-	-	-	-
Clothing and decoration	156.97	4.69%	7.35	-	0.55	0.48	1.68	2.77	1.88	-	-	-	-	-	-
Small tools, material, furniture and equip.	349.45	43.59%	152.32	85.29	2.99	9.56	10.91	22.53	21.03	-	-	-	-	-	-
Energy and water	150.96	22.91%	34.59	0.41	3.88	5.82	2.15	5.99	16.34	-	-	-	-	-	-
Health supplies and equipment	146.55	54.38%	79.70	-	-	-	-	39.06	40.64	-	-	-	-	-	-
Other supplies	3.15	0.00%	-	-	-	-	-	-	-	-	-	-	-	-	-
<b>-Services</b>	<b>1,646.07</b>	<b>14.92%</b>	<b>245.58</b>	<b>0.74</b>	<b>40.26</b>	<b>36.15</b>	<b>46.89</b>	<b>45.51</b>	<b>76.02</b>	-	-	-	-	-	-
o.w/ -Rentals and charges (furniture)	27.26	55.73%	15.19	0.13	9.40	3.50	0.34	0.54	1.28	-	-	-	-	-	-
-Maintenance and repairs	944.28	11.79%	111.37	-	4.81	12.99	20.64	32.81	40.13	-	-	-	-	-	-
<b>-Financial charges</b>	<b>621.36</b>	<b>37.51%</b>	<b>233.05</b>	8.94	118.04	61.62	4.99	16.35	23.11	-	-	-	-	-	-
-Interests on external debt	621.36	33.69%	209.33	8.94	117.47	39.03	4.99	15.80	23.11	-	-	-	-	-	-
<b>-Social Benefit</b>	<b>2,321.56</b>	<b>56.73%</b>	<b>1,317.03</b>	<b>103.42</b>	<b>114.83</b>	<b>240.70</b>	<b>115.36</b>	<b>377.05</b>	<b>365.67</b>	-	-	-	-	-	-
o.w/- Social Security Benefits	1,137.31	51.19%	582.17	90.63	101.04	158.63	39.06	92.81	99.99	-	-	-	-	-	-
-Social Assistance to citizens	969.04	70.38%	682.06	9.54	8.85	75.32	65.65	266.78	255.92	-	-	-	-	-	-
-Social Assistance to social and cultural entities	147.90	31.52%	46.62	3.23	4.83	6.64	10.57	11.73	9.62	-	-	-	-	-	-
-Other social benefits	13.66	41.16%	5.62	-	-	-	-	5.62	-	-	-	-	-	-	-
<b>-Grants</b>	<b>2,608.97</b>	<b>46.90%</b>	<b>1,223.67</b>	258.20	437.24	49.42	268.04	127.03	83.73	-	-	-	-	-	-
<b>-Other non wage</b>	<b>845.48</b>	<b>16.86%</b>	<b>142.55</b>	14.35	78.65	24.50	15.91	6.95	2.20	-	-	-	-	-	-
o.w/ -Unanticipated Expense(Reserve)	697.00	0.00%	-	-	-	-	-	-	-	-	-	-	-	-	-
<b>2. CAPITAL</b>	<b>11,859.31</b>	<b>32.94%</b>	<b>3,906.67</b>	<b>416.70</b>	<b>352.40</b>	<b>1,523.33</b>	<b>217.67</b>	<b>644.86</b>	<b>751.71</b>	-	-	-	-	-	-
<b>Domestic Financing</b>	<b>6,393.66</b>	<b>35.26%</b>	<b>2,254.62</b>	<b>20.48</b>	<b>130.80</b>	<b>1,229.18</b>	<b>45.54</b>	<b>388.58</b>	<b>440.03</b>	-	-	-	-	-	-
Tangible fixed assets and land	6,393.66	33.83%	2,163.18	20.48	130.80	1,226.74	45.54	388.58	351.04	-	-	-	-	-	-
Investments	-	...	2.44	-	-	2.44	-	-	-	-	-	-	-	-	-
Other financial assets	-	...	88.99	-	-	-	-	-	88.99	-	-	-	-	-	-
<b>External assistance (Project)</b>	<b>5,465.65</b>	<b>30.23%</b>	<b>1,652.05</b>	<b>396.22</b>	<b>221.61</b>	<b>294.15</b>	<b>172.13</b>	<b>256.27</b>	<b>311.68</b>	-	-	-	-	-	-
<b>CURRENT DEF/SURPL.comt (I.I-II.I)</b>	<b>2,259.14</b>	<b>145.55%</b>	<b>3,288.12</b>	<b>380.85</b>	<b>351.33</b>	<b>801.67</b>	<b>1,234.84</b>	<b>379.41</b>	<b>140.01</b>	-	-	-	-	-	-
<b>OVERALL DEF/SURPL.comt (I-II)</b>	<b>(9,378.96)</b>	<b>...</b>	<b>(588.99)</b>	<b>(35.85)</b>	<b>2.29</b>	<b>(704.51)</b>	<b>1,025.04</b>	<b>(264.25)</b>	<b>(611.70)</b>	-	-	-	-	-	-
<b>CURRENT DEF/SURPL.cash(comt.+3)</b>	<b>2,259.14</b>	<b>145.55%</b>	<b>3,288.12</b>	<b>380.85</b>	<b>351.33</b>	<b>801.67</b>	<b>1,234.84</b>	<b>379.41</b>	<b>140.01</b>	-	-	-	-	-	-
<b>OVERALL DEF/SURPL.cash (com.+3)</b>	<b>(9,378.96)</b>	<b>...</b>	<b>(588.99)</b>	<b>(35.85)</b>	<b>2.29</b>	<b>(704.51)</b>	<b>1,025.04</b>	<b>(264.25)</b>	<b>(611.70)</b>	-	-	-	-	-	-

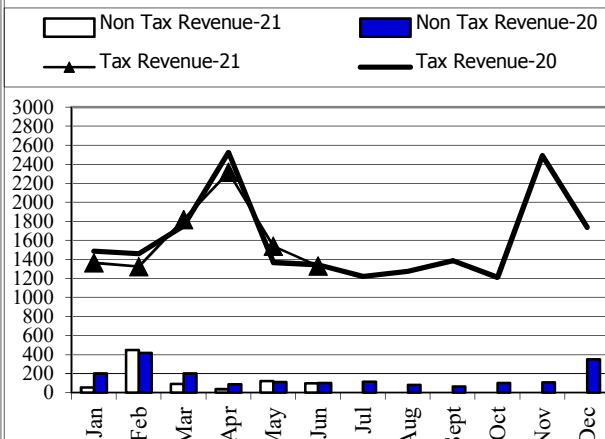
## TOFE : BUDGET EXECUTION OF 2021

	2021 C.B.L.	Total Act /BL2021	Total Act	Jan-21	Feb-21	Mar-21	Apr-21	May-21	Jun-21	Jul-21	Aug-21	Sep-21	Oct-21	Nov-21	Dec-21
<b>III. FINANCING</b>	<b>9,378.96</b>	<b>6.28%</b>	<b>588.99</b>	<b>35.85</b>	<b>(2.29)</b>	<b>704.51</b>	<b>(1,025.04)</b>	<b>264.25</b>	<b>611.70</b>	-	-	-	-	-	-
<b>1. FOREIGN FINANCING</b>	<b>5,137.96</b>	<b>39.99%</b>	<b>2,054.81</b>	<b>360.70</b>	<b>937.45</b>	<b>149.85</b>	<b>145.42</b>	<b>244.01</b>	<b>217.38</b>	-	-	-	-	-	-
<b>a. Budget support</b>	<b>857.50</b>	<b>120.16%</b>	<b>1,030.36</b>	-	<b>967.83</b>	-	-	<b>62.53</b>	-	-	-	-	-	-	-
<b>-Grants-budget support</b>	100.00	65.59%	65.59	-	<b>3.05</b>	-	-	<b>62.53</b>	-	-	-	-	-	-	-
Capital Support	100.00	65.59%	65.59	-	3.05	-	-	62.53	-	-	-	-	-	-	-
Bilateral grant for investment expense	100.00	3.05%	3.05	-	3.05	-	-	-	-	-	-	-	-	-	-
Donation from citizens charities - local and abroad for investment expense	-	...	62.53	-	-	-	-	62.53	-						
<b>-Debt and related liabilities-budget support</b>	757.50	127.36%	964.77	-	<b>964.77</b>	-	-	-	-	-	-	-	-	-	-
Foreign borrowing	757.50	127.36%	964.77	-	964.77	-	-	-	-	-	-	-	-	-	-
Foreign borrowings from multilateral agencies	757.50	127.36%	964.77	-	964.77	-	-	-	-	-	-	-	-	-	-
<b>b. Project aid</b>	<b>5,465.65</b>	<b>29.79%</b>	<b>1,628.02</b>	<b>382.86</b>	<b>220.78</b>	<b>293.85</b>	<b>167.13</b>	<b>244.52</b>	<b>318.89</b>	-	-	-	-	-	-
<b>Spent</b>	<b>5,465.65</b>	<b>30.23%</b>	<b>1,652.05</b>	<b>396.22</b>	<b>221.61</b>	<b>294.15</b>	<b>172.13</b>	<b>256.27</b>	<b>311.68</b>	-	-	-	-	-	-
<b>-Grants</b>	<b>862.45</b>	<b>50.00%</b>	<b>431.23</b>	<b>71.87</b>	<b>71.87</b>	<b>71.87</b>	<b>71.87</b>	<b>71.87</b>	<b>71.87</b>	-	-	-	-	-	-
Bilateral grant for investment expense	862.45	50.00%	431.23	71.87	71.87	71.87	71.87	71.87	71.87	-	-	-	-	-	-
<b>-Debt and related liabilities</b>	<b>4,603.20</b>	<b>26.52%</b>	<b>1,220.83</b>	<b>324.35</b>	<b>149.74</b>	<b>222.28</b>	<b>100.26</b>	<b>184.40</b>	<b>239.80</b>	-	-	-	-	-	-
Foreign borrowing	4,603.20	26.52%	1,220.83	324.35	149.74	222.28	100.26	184.40	239.80	-	-	-	-	-	-
Foreign borrowings from multilateral agencies	1,841.28	27.07%	498.48	73.95	73.00	89.80	94.07	45.16	122.50	-	-	-	-	-	-
Foreign borrowings from bilateral agencies	2,761.92	26.15%	722.35	250.40	76.73	132.48	6.19	139.25	117.30	-	-	-	-	-	-
<b>Pending</b>	-	...	<b>(24.03)</b>	<b>(13.36)</b>	<b>(0.83)</b>	<b>(0.30)</b>	<b>(5.00)</b>	<b>(11.76)</b>	<b>7.22</b>	-	-	-	-	-	-
<b>c. Amortization on external debts</b>	<b>(1,185.19)</b>	...	<b>(603.57)</b>	<b>(22.16)</b>	<b>(251.15)</b>	<b>(144.00)</b>	<b>(21.71)</b>	<b>(63.04)</b>	<b>(101.51)</b>	-	-	-	-	-	-
<b>2. DOMESTIC FINANCING</b>	<b>700.00</b>	<b>-5.48%</b>	<b>(38.36)</b>	<b>(115.46)</b>	<b>32.74</b>	<b>(61.84)</b>	<b>7.67</b>	<b>45.60</b>	<b>52.93</b>	-	-	-	-	-	-
<b>a. Net bank financing (monetary survey)</b>	<b>700.00</b>	<b>-5.48%</b>	<b>(38.36)</b>	<b>(115.46)</b>	<b>32.74</b>	<b>(61.84)</b>	<b>7.67</b>	<b>45.60</b>	<b>52.93</b>	-	-	-	-	-	-
- Government's deposits	700.00	-5.48%	(38.36)	(115.46)	32.74	(61.84)	7.67	45.60	52.93	-	-	-	-	-	-
<b>3. OUTSTANDING OPERATIONS</b>	-	...	<b>(1,427.47)</b>	<b>(209.39)</b>	<b>(972.49)</b>	<b>616.50</b>	<b>(1,178.12)</b>	<b>(25.35)</b>	<b>341.39</b>	-	-	-	-	-	-
Error	-	...	0.00	0.00	(0.00)	(0.00)	-	0.00	0.00	-	-	-	-	-	-
Exchange rate (R/\$)	-	...	-	4,065	4,069	4,045	4,048	4,072	4,075	-	-	-	-	-	-
Provincial revenue	<b>2,203.58</b>	<b>84.95%</b>	<b>1,871.93</b>	<b>114.03</b>	<b>1,164.36</b>	<b>179.87</b>	<b>92.83</b>	<b>161.28</b>	<b>159.56</b>	-	-	-	-	-	-
o.w. provincial tax revenue	1,050.32	62.47%	656.13	109.53	117.71	141.37	74.57	102.26	110.68	-	-	-	-	-	-
o.w. prov. non-tax revenue	213.93	28.52%	61.02	4.48	14.33	11.82	12.54	8.66	9.19	-	-	-	-	-	-
o.w. prov. Transfer from central	939.33	122.94%	1,154.78	0.01	1,032.32	26.67	5.72	50.36	39.70	-	-	-	-	-	-
Provincial expenditure	<b>1,559.62</b>	<b>67.38%</b>	<b>1,050.80</b>	<b>13.93</b>	<b>317.26</b>	<b>176.66</b>	<b>106.61</b>	<b>152.64</b>	<b>283.71</b>	-	-	-	-	-	-
o.w. wage and salary	640.54	38.03%	243.59	6.41	35.75	64.91	46.58	49.65	40.29	-	-	-	-	-	-
o.w. non-wage	837.36	84.69%	709.14	7.52	244.93	110.35	54.05	94.32	197.97	-	-	-	-	-	-
o.w. investment	81.72	120.01%	98.07	-	36.58	1.40	5.98	8.66	45.46	-	-	-	-	-	-
Provincial Balance	<b>643.96</b>	127.51%	821.13	100.10	847.10	3.21	(13.77)	8.64	(124.15)	-	-	-	-	-	-
Contribution from casino and Lottery	201.23	1.74%	3.49	0.40	0.44	1.80	0.23	0.32	0.30	-	-	-	-	-	-

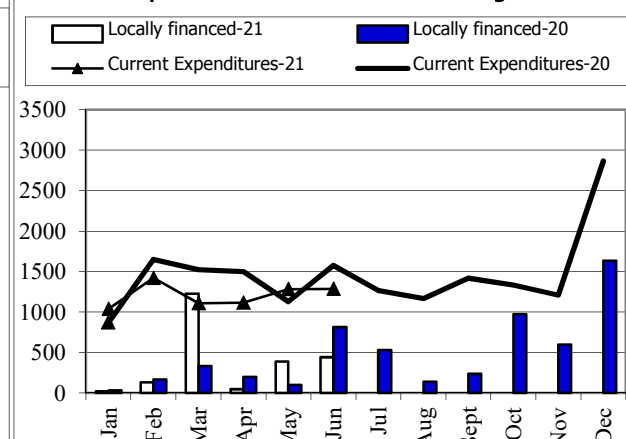
Revenue and Trade Related Tax 2020-2021



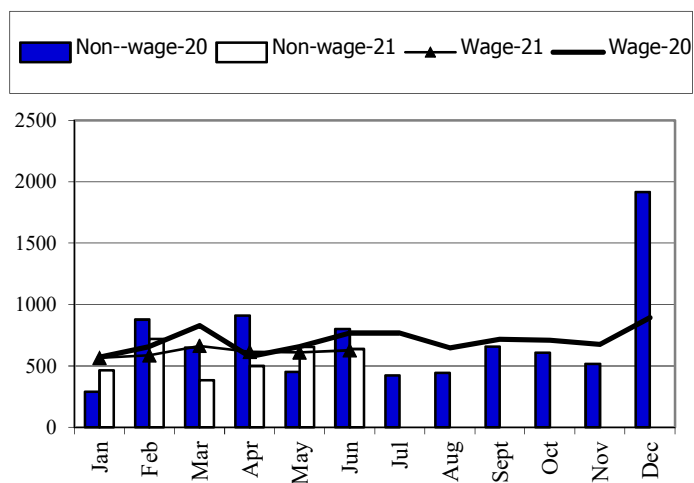
Tax and Non Tax Revenue 2020-2021



Current Expenditures and Domestic Financing 2020-2021

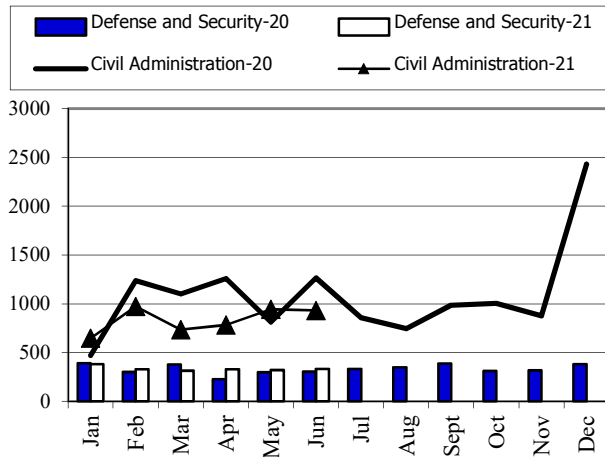


Wage and Non-wage 2020-2021

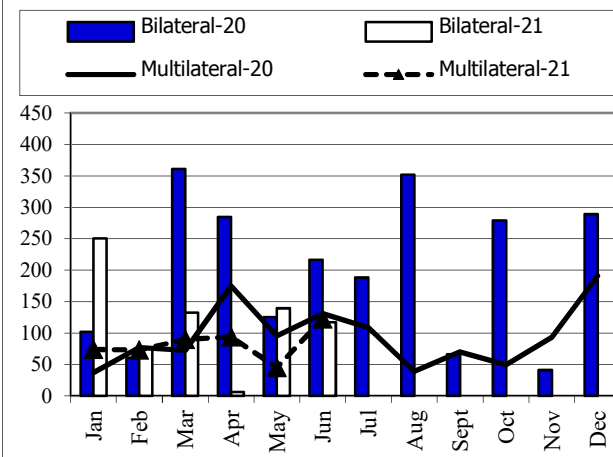


Source: MEF

Defense and Security and Civil Administrative Expenditure 2020-2021



Multilateral and Bilateral Disbursements 2020-2021



### TABLE OF MINISTRY AND INSTITUTION SPENDING OF 2021

	2021 C.B.L.	Total Act /BL2021	Total Act	Jan-21	Feb-21	Mar-21	Apr-21	May-21	Jun-21	Jul-21	Aug-21	Sep-21	Oct-21	Nov-21	Dec-21
<b>Total Current Expenditures</b>	<b>17,446,841</b>	<b>26.86%</b>	<b>4,685,820</b>	<b>1,037,434</b>	<b>1,422,653</b>	<b>1,108,535</b>	<b>1,117,199</b>	<b>1,280,894</b>	<b>1,287,252</b>						
<b>I. General Administration</b>	<b>1,815,921</b>	<b>32.26%</b>	<b>585,899</b>	<b>121,917</b>	<b>183,109</b>	<b>143,912</b>	<b>136,961</b>	<b>221,349</b>	<b>111,691</b>						
01. Royal Palace	82,393	30.09%	24,795	4,559	6,553	7,828	5,855	5,763	5,194						
02. National Assembly	162,699	47.42%	77,158	24,147	11,520	25,748	15,743	-	24,057						
03. Senate	76,052	54.45%	41,409	11,531	11,978	11,681	6,220	-	-						
04. Counstitutional Council	12,920	49.78%	6,432	2,849	964	-	2,619	735	-						
05.1 Council of Minister	397,101	26.20%	104,027	32,061	16,785	11,777	43,403	141,042	23,975						
05.4 CDC	13,691	8.57%	1,174	92	125	585	372	99	980						
08. Relations Assembly and Inspections	38,878	24.32%	9,456	1,683	1,990	3,036	2,747	2,931	2,845						
09. Foreign Affairs and Int'l Cooperation	161,425	29.91%	48,285	8,268	19,933	17,428	2,657	5,165	6,924						
10. Economy and Finance	468,559	43.69%	204,705	24,330	97,095	44,783	38,497	46,235	20,565						
14. Planning	92,784	20.96%	19,445	3,574	4,738	6,225	4,909	5,744	5,612						
28. Urbanization and Construction	109,926	14.20%	15,607	3,199	3,938	4,252	4,217	4,922	4,328						
30. National Election Committee	87,422	7.20%	6,295.10	1,177	1,665	1,770	1,683	1,672	8,878						
31. National Audit Authority	12,948	20.93%	2,710	676	676	676	682	682	1,004						
33.1 Anti-corruprtion Authority	42,549	31.52%	13,410	2,071	2,581	4,748	4,010	2,441	2,295						
34. Public Function	56,574	19.43%	10,992	1,701	2,569	3,375	3,348	3,921	5,034						
<b>II. Defense and Security</b>	<b>4,715,869</b>	<b>29.30%</b>	<b>1,381,904</b>	<b>386,421</b>	<b>338,029</b>	<b>319,902</b>	<b>337,552</b>	<b>327,547</b>	<b>342,213</b>						
06. National Defense	2,565,862	30.20%	775,015	179,501	202,365	184,023	209,126	180,678	193,819						
07.1 Interior - Public Security	1,686,858	29.13%	491,409	185,457	101,635	102,488	101,830	109,263	111,125						
07.2 Interior-Administration	298,407	30.18%	90,044	16,923	27,072	26,653	19,397	29,408	27,948						
26. Justice	164,742	15.44%	25,436	4,541	6,958	6,739	7,199	8,199	9,320						
<b>III. Social Administrative</b>	<b>6,048,675</b>	<b>24.83%</b>	<b>1,501,737</b>	<b>302,386</b>	<b>331,799</b>	<b>515,916</b>	<b>351,636</b>	<b>580,095</b>	<b>700,360</b>						
11. Information	80,558	30.56%	24,621	3,165	5,445	8,959	7,051	8,289	4,748						
12. Public Health	1,030,290	17.14%	176,639	56,035	8,180	72,954	39,471	176,302	308,916						
16. Education, Youth and Sport	3,024,413	24.81%	750,239	131,833	187,676	217,546	213,183	228,868	228,315						
18. Culture and Fine-Arts	165,056	23.72%	39,148	3,777	4,610	23,689	7,072	27,656	6,036						
19. Environment	85,498	23.80%	20,351	2,865	5,397	6,040	6,050	6,423	6,419						
21. Social Affair & Veteran	1,287,695	32.85%	422,975	94,332	105,158	167,295	56,190	113,111	109,565						
23. Public Worship and Religion	66,270	18.87%	12,504	1,970	2,858	3,812	3,863	5,606	5,169						
24. Woman Affairs	44,538	25.87%	11,523	1,627	1,737	3,236	4,923	3,544	3,658						

### TABLE OF MINISTRY AND INSTITUTION SPENDING OF 2021

	2021 C.B.L.	Total Act /BL2021	Total Act	Jan-21	Feb-21	Mar-21	Apr-21	May-21	Jun-21	Jul-21	Aug-21	Sep-21	Oct-21	Nov-21	Dec-21
32. Labour and Vocational Training	264,357	16.55%	43,738	6,781	10,737	12,386	13,835	10,296	27,533						
<b>IV. Economy Administrative</b>	<b>1,459,755</b>	<b>14.20%</b>	<b>207,219</b>	<b>27,716</b>	<b>46,255</b>	<b>66,862</b>	<b>66,385</b>	<b>67,756</b>	<b>101,245</b>						
05.3 Civil Aviation Secretariate	49,555	11.04%	5,472	1,344	1,300	1,305	1,522	1,643	2,071						
13. Industry, Mines and Energy	54,808	15.41%	8,444	1,328	2,041	2,523	2,552	3,166	4,348						
15. Commerce	123,743	18.30%	22,642	2,833	3,522	11,934	4,353	9,407	13,006						
17. Agriculture, Forestry and Fishery	261,553	20.68%	54,081	7,735	11,724	16,459	18,163	18,543	22,575						
20. Rural Development	184,355	7.95%	14,653	2,235	4,597	4,439	3,382	5,496	7,836						
22. Posts and Telecommunications	77,655	13.90%	10,794	1,890	2,266	3,372	3,266	3,056	21,562						
25. Public Works and Transport	408,326	9.35%	38,179	4,956	8,789	15,754	8,680	11,574	12,450						
27. Tourism	84,175	23.65%	19,904	1,718	3,814	4,043	10,330	5,568	4,034						
29. Water Resources and Meteorology	158,619	14.56%	23,096	2,060	5,993	3,910	11,133	5,637	9,655						
35. Industry and Handicrafts	56,966	17.47%	9,954	1,616	2,210	3,123	3,005	3,667	3,708						
<b>V. Miscellaneous</b>	<b>3,406,621</b>	<b>29.62%</b>	<b>1,009,061</b>	<b>198,993</b>	<b>523,461</b>	<b>61,942</b>	<b>224,665</b>	<b>84,146</b>	<b>31,744</b>						
99.Unexpect Expenditure	3,406,621	29.62%	1,009,061	198,993	523,461	61,942	224,665	84,146	31,744						



## Report preparation Note



The Implementation of State Budget (TOFE) in June 2021 is compiled based on the preliminary data with the cut-off date as the followings:

- 1.The Revenue Data of the Budgetary Central Government Level (Line Ministries and Line Departments) provided by General Department Of National Treasury (GDNT) and FMIS System, was updated on 23rd Jul, 2021
- 2.The Revenue Data of the Local Government Level (Municipal/ Provincial Level) provided by GDNT and FMIS System, was updated on 23rd Jul, 2021
- 3.The Expenditure Data of the Budgetary Central Government Level (Line Ministries and Line Departments) provided by GDNT and FMIS System, was updated on 22th Jul, 2021
- 4.The Expenditure Data of the Local Government Level (Municipal/ Provincial Level) provided by GDNT and FMIS System, was updated on 20th Jul, 2021
- 5.The Trail Balance Report of the Budgetary Central Government Level (Line Ministries and Line Departments) provided by GDNT and FMIS System, was updated on 20th Jul, 2021
- 6.The Trail Balance Report of the Local Government Level (Municipal/ Provincial Level) provided by GDNT and FMIS System, was updated on 20th Jul, 2021
- 7.The Loan & Grant Data provided by General Department of International Cooperation and Debt Management (GDICDM), was updated on 14th Jul, 2021
- 8.The Multilateral & Bilateral Data downloaded from DMFAS System of GDICDM, was updated on 19th Jul, 2021
- 9.The Credit Bank Operations Data provided by National Bank of Cambodia (NBC), was updated on 01st Jul, 2021.

TOFE report will be updated in the next release of the following month.

