

# State Budget Implementation

January, 2021

	Page
1. Brief	1
2. TOFE	2
3. Ministry Spending	7

## **1. Brief Note on Monthly Budget Implementation of January 2020 (TOFE\_GFSM1986)**

In the fiscal year of 2021, the Cambodia economy is expected to recover and achieve a projected growth rate at around 4%, supported by the recovery of the industrial, service and agriculture sector. As the Covid-19 pandemic continues, the Budget Law of 2021 was prepared with the means to effectively mobilize the resources to sustain the implementation of the state budget, with the total domestic revenue and expenditure are projected at 17.07% and 25.11% of GDP, respectively.

**Within the Budget Law of 2021, the national gross domestic product is projected at 19,927.19 billion riels, a decrease of 17.29% compared to the Budget Law of 2020.** In January 2021, the total domestic revenue of the budgetary central government implemented 7.04% of the budget law or equivalent to KHR 1,402.34 billion, decreased by 16.82% compared to the same month in 2020 in which tax revenue and non-tax revenue decreased by 8.23% and 80.36%, respectively. The decline was due to declining economic activity amid the COVID-19 pandemic and the implementation of the government intervention measures such as the exemption of all types of monthly taxes for tourism and the minimum tax for aviation industry.

**The total expenditure in the Budget Law of 2021 is projected at 29,306.15 billion riels, a decrease of 2.28% compared to the Budget Law of 2020.** In January 2021, the total expenditure of the budgetary central government implemented 4.94% of the budget law or equivalent to KHR 1,446.70 billion, an increase of 29.43% compared to January 2020, in which the current expenditure and capital expenditure were KHR 1,030.06 billion and KHR 416.64 billion, respectively. Overall, in aims to address the impact of the COVID-19 pandemic, the government has executed a proactive targeted-expenditure on sectors such as health, social assistance, and the economy.

**Amid the COVID-19 pandemic, the government has planned to use KHR 9,378.96 billion in foreign and domestic financing, an increase of 59.04% compared to the Budget Law of 2020.** In January 2021, the budgetary central government implemented the total financing amounted to KHR 44.37 billion or equivalent to 0.47% of the budget law.

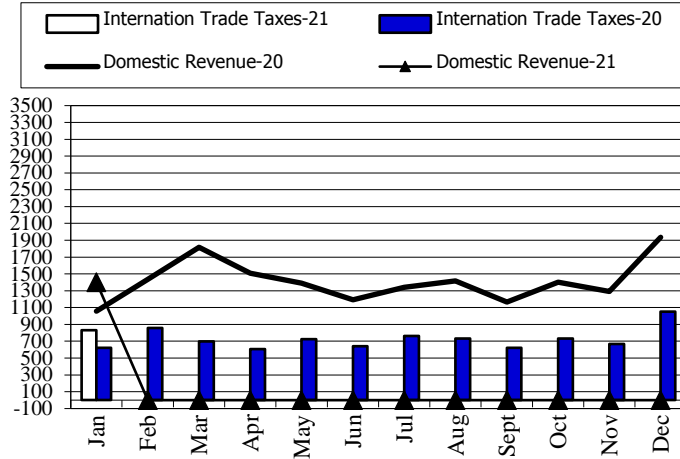
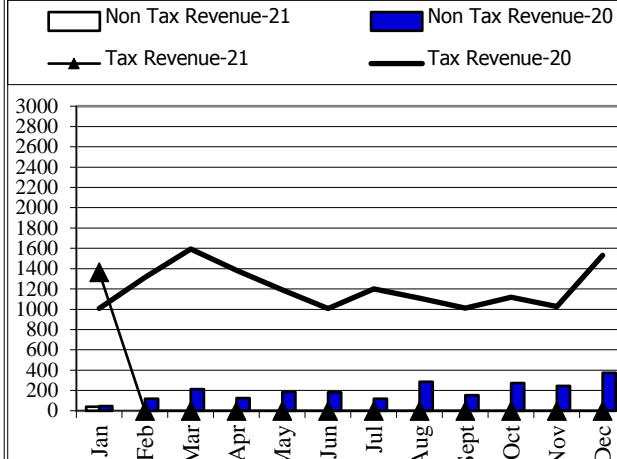
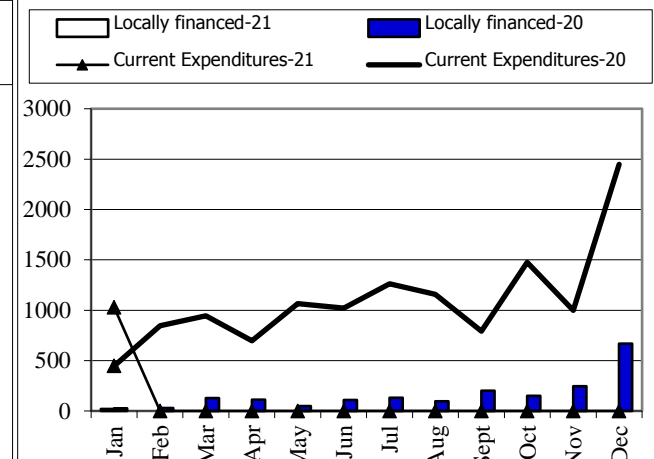
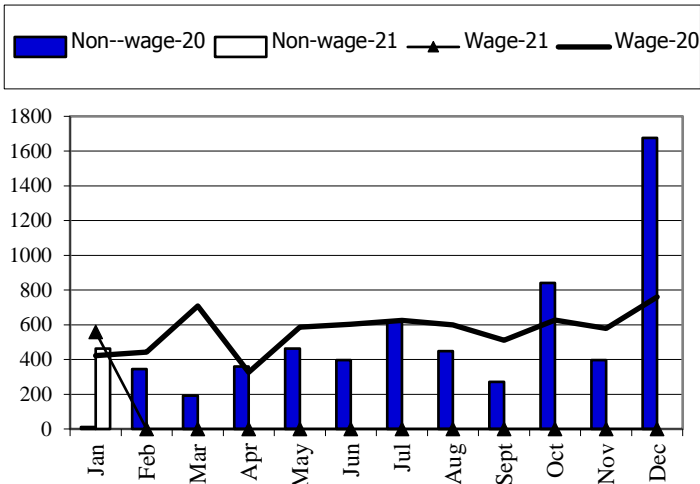
As a result of the implementation of the state budget in January 2021, there is a budget deficit of KHR 44.37 billion, due to the sharp decline in the revenue performances while the government has the needs to increase the spending on economic recoveries and social supports against the COVID-19 pandemic. Despite this, the Government of Cambodia has maintained its stable financial management.

TOFE: BUDGET IMPLEMENTATION FOR 2021															
	2020 C.B.L.	Total Act /BL2020	Total Act	Jan-21	Feb-21	Mar-21	Apr-21	May-21	Jun-21	Jul-21	Aug-21	Sep-21	Oct-21	Nov-21	Dec-21
<b>I. DOMESTIC REVENUE</b>	<b>19,927.19</b>	<b>7.04%</b>	<b>1,402.34</b>	<b>1,402.34</b>	-	-	-	-	-	-	-	-	-	-	
<b>I.CURRENT REVENUE</b>	<b>19,705.98</b>	<b>7.12%</b>	<b>1,402.34</b>	<b>1,402.34</b>	-	-	-	-	-	-	-	-	-	-	
<b>a. TAX REVENUE</b>	<b>17,520.00</b>	<b>7.78%</b>	<b>1,362.92</b>	<b>1,362.92</b>	-	-	-	-	-	-	-	-	-	-	
<b>Domestic tax revenue</b>	<b>15,224.60</b>	<b>7.90%</b>	<b>1,203.38</b>	<b>1,203.38</b>	-	-	-	-	-	-	-	-	-	-	
Direct Tax (income tax, profits tax)	4,304.00	8.68%	373.60	373.60	-	-	-	-	-	-	-	-	-	-	
Indirect Tax	10,920.60	7.60%	829.78	829.78	-	-	-	-	-	-	-	-	-	-	
o.w/ - Excise Tax on specific goods	870.00	7.95%	69.15	69.15	-	-	-	-	-	-	-	-	-	-	
o.w/ -Special Excise Tax(petroleum,others)	3,563.80	7.65%	272.78	272.78	-	-	-	-	-	-	-	-	-	-	
o.w/ - Excise Tax on specific services	75.00	8.11%	6.08	6.08	-	-	-	-	-	-	-	-	-	-	
Other tax revenues	135.00	9.12%	12.32	12.32	-	-	-	-	-	-	-	-	-	-	
<b>Taxes on international trade</b>	<b>2,295.40</b>	<b>6.95%</b>	<b>159.53</b>	<b>159.53</b>	-	-	-	-	-	-	-	-	-	-	
Taxes and duties on imports	2,283.70	7.30%	156.89	156.89	-	-	-	-	-	-	-	-	-	-	
o.w/ -Customs duties on imports	1,546.60	7.30%	112.87	112.87	-	-	-	-	-	-	-	-	-	-	
-Customs duties on petroleum products	331.00	5.36%	17.74	17.74	-	-	-	-	-	-	-	-	-	-	
-Additional tax on oil product - Road maintenance	361.00	6.35%	22.93	22.93	-	-	-	-	-	-	-	-	-	-	
-others	45.10	7.43%	3.35	3.35	-	-	-	-	-	-	-	-	-	-	
Taxes and duties on exports	11.70	22.60%	2.64	2.64	-	-	-	-	-	-	-	-	-	-	
o.w/-Tax on timber exports	4.50	22.30%	1.00	1.00	-	-	-	-	-	-	-	-	-	-	
-Tax on rubber exports	2.70	30.11%	0.81	0.81	-	-	-	-	-	-	-	-	-	-	
-Tax on export of agricultural products	4.30	18.83%	0.81	0.81	-	-	-	-	-	-	-	-	-	-	
<b>b. NON TAX REVENUE</b>	<b>2,185.98</b>	<b>1.80%</b>	<b>39.42</b>	<b>39.42</b>	-	-	-	-	-	-	-	-	-	-	
<b>State Property Revenue</b>	<b>205.08</b>	<b>3.00%</b>	<b>6.15</b>	<b>6.15</b>	-	-	-	-	-	-	-	-	-	-	
Concession and rental land	185.14	3.32%	6.15	6.15118	-	-	-	-	-	-	-	-	-	-	
Public Enterprises Income	19.94	0.00%	-	-	-	-	-	-	-	-	-	-	-	-	
<b>Income from Sales, Rental of Properties and Services</b>	<b>1,668.81</b>	<b>1.79%</b>	<b>29.85</b>	<b>29.85</b>	-	-	-	-	-	-	-	-	-	-	
Income of administrative public enterprises -operational services (for profit)	627.07	0.07%	0.43	0.43	-	-	-	-	-	-	-	-	-	-	
Sales of Property of Public Administration	110.03	5.59%	6.15	6.15	-	-	-	-	-	-	-	-	-	-	
Administrative fees	594.12	2.52%	14.94	14.94	-	-	-	-	-	-	-	-	-	-	
Sales of Services	41.80	2.00%	0.84	0.84	-	-	-	-	-	-	-	-	-	-	
Other transaction fees	266.07	0.76%	2.01	2.01	-	-	-	-	-	-	-	-	-	-	

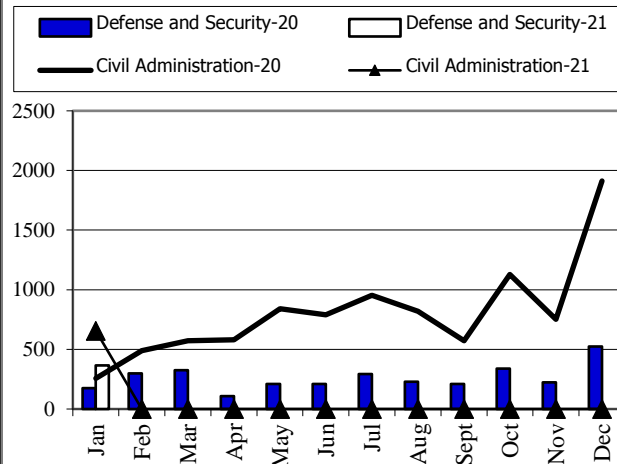
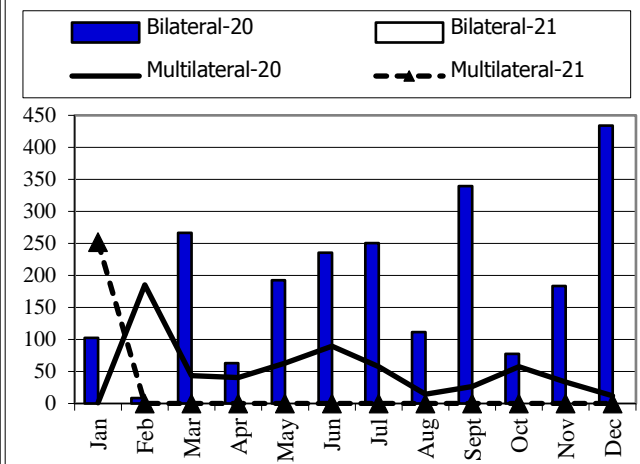
TOFE: BUDGET IMPLEMENTATION FOR 2021															
	2020 C.B.L.	Total Act /BL2020	Total Act	Jan-21	Feb-21	Mar-21	Apr-21	May-21	Jun-21	Jul-21	Aug-21	Sep-21	Oct-21	Nov-21	Dec-21
Other Rental of immovable properties	29.72	18.46%	5.49	5.49	-	-	-	-	-	-	-	-	-	-	-
<b>Other non tax</b>	<b>312.09</b>	<b>1.09%</b>	<b>3.42</b>	<b>3.42</b>	-	-	-	-	-	-	-	-	-	-	-
o.w/ Other exceptional revenues	-	...	2.39	2.39	-	-	-	-	-	-	-	-	-	-	-
<b>2. CAPITAL REVENUE</b>	<b>221.20</b>	<b>0.00%</b>	-	-	-	-	-	-	-	-	-	-	-	-	-
Other financial assets	221.20	0.00%	-	-	-	-	-	-	-	-	-	-	-	-	-
<b>II. BUDGET EXPENDITURE</b>	<b>29,306.15</b>	<b>8.22%</b>	<b>2,410.15</b>	<b>2,410.15</b>	-	-	-	-	-	-	-	-	-	-	-
<b>1. CURRENT EXPENDITURE</b>	<b>17,446.84</b>	<b>5.90%</b>	<b>1,030.06</b>	<b>1,030.06</b>	-	-	-	-	-	-	-	-	-	-	-
<b>a. Wages</b>	<b>7,980.85</b>	<b>7.00%</b>	<b>558.87</b>	<b>558.87</b>	-	-	-	-	-	-	-	-	-	-	-
Personnel charges-civil administrative	4,433.17	6.30%	279.20	279.20	-	-	-	-	-	-	-	-	-	-	-
o.w/ Diplomatic salary	5.15	0.00%	-	-	-	-	-	-	-	-	-	-	-	-	-
Personnel charges-national defence and security	3,547.68	7.88%	279.67	279.67	-	-	-	-	-	-	-	-	-	-	-
<b>b. Non wage</b>	<b>9,465.99</b>	<b>4.98%</b>	<b>471.19</b>	<b>471.19</b>	-	-	-	-	-	-	-	-	-	-	-
<b>-Purchases</b>	<b>1,422.55</b>	<b>6.03%</b>	<b>85.76</b>	<b>85.76</b>	-	-	-	-	-	-	-	-	-	-	-
Maintenance supplies	240.88	0.01%	0.02	0.02	-	-	-	-	-	-	-	-	-	-	-
Administration supplies	203.71	0.02%	0.04	0.04	-	-	-	-	-	-	-	-	-	-	-
Food and agricultural products	170.88	0.00%	-	-	-	-	-	-	-	-	-	-	-	-	-
Clothing and decoration	156.97	0.00%	-	-	-	-	-	-	-	-	-	-	-	-	-
Small tools, material, furniture and equip.	349.45	24.41%	85.29	85.29	-	-	-	-	-	-	-	-	-	-	-
Energy and water	150.96	0.26%	0.40	0.40	-	-	-	-	-	-	-	-	-	-	-
Health supplies and equipment	146.55	0.00%	-	-	-	-	-	-	-	-	-	-	-	-	-
Other supplies	3.15	0.00%	-	-	-	-	-	-	-	-	-	-	-	-	-
<b>-Services</b>	<b>1,646.07</b>	<b>0.04%</b>	<b>0.71</b>	<b>0.71</b>	-	-	-	-	-	-	-	-	-	-	-
o.w/ -Rentals and charges (furniture)	27.26	0.46%	0.13	0.13	-	-	-	-	-	-	-	-	-	-	-
-Maintenance and repairs	944.28	0.00%	-	-	-	-	-	-	-	-	-	-	-	-	-
<b>-Financial charges</b>	<b>621.36</b>	<b>1.44%</b>	<b>8.94</b>	<b>8.94</b>	-	-	-	-	-	-	-	-	-	-	-
-Interests on external debt	621.36	1.44%	8.94	8.94	-	-	-	-	-	-	-	-	-	-	-
<b>-Social Benefit</b>	<b>2,321.56</b>	<b>4.45%</b>	<b>103.24</b>	<b>103.24</b>	-	-	-	-	-	-	-	-	-	-	-
o.w/- Social Security Benefits	1,137.31	7.97%	90.63	90.63	-	-	-	-	-	-	-	-	-	-	-
-Social Assistance to citizens	969.04	0.97%	9.35	9.35	-	-	-	-	-	-	-	-	-	-	-
-Social Assistance to social and cultural entities	147.90	2.18%	3.23	3.23	-	-	-	-	-	-	-	-	-	-	-

TOFE: BUDGET IMPLEMENTATION FOR 2021															
	2020 C.B.L.	Total Act /BL2020	Total Act	Jan-21	Feb-21	Mar-21	Apr-21	May-21	Jun-21	Jul-21	Aug-21	Sep-21	Oct-21	Nov-21	Dec-21
-Other social benefits	13.66	0.00%	-	-	-	-	-	-	-	-	-	-	-	-	-
<b>-Grants</b>	<b>2,608.97</b>	<b>9.90%</b>	<b>258.20</b>	258.20	-	-	-	-	-	-	-	-	-	-	-
<b>-Other non wage</b>	<b>845.48</b>	<b>1.70%</b>	<b>14.35</b>	14.35	-	-	-	-	-	-	-	-	-	-	-
o.w/ -Unanticipated Expense(Reserve)	647.00	0.00%	-	-	-	-	-	-	-	-	-	-	-	-	-
<b>2. CAPITAL</b>	<b>11,859.31</b>	<b>11.64%</b>	<b>1,380.10</b>	<b>1,380.10</b>	-	-	-	-	-	-	-	-	-	-	-
<b>Domestic Financing</b>	<b>6,393.66</b>	<b>0.32%</b>	<b>20.48</b>	<b>20.48</b>	-	-	-	-	-	-	-	-	-	-	-
Tangible fixed assets and land	5,192.45	0.39%	20.48	20.48	-	-	-	-	-	-	-	-	-	-	-
External assistance (Project)	5,465.65	24.88%	1,359.62	1,359.62	-	-	-	-	-	-	-	-	-	-	-
<b>CURRENT DEF/SURPL.comt (I.I-II.1)</b>	<b>2,259.14</b>	<b>16.48%</b>	<b>372.28</b>	<b>372.28</b>	-	-	-	-	-	-	-	-	-	-	-
<b>OVERALL DEF/SURPL.comt (I-II)</b>	<b>(9,378.96)</b>	<b>...</b>	<b>(1,007.82)</b>	<b>(1,007.82)</b>	-	-	-	-	-	-	-	-	-	-	-
<b>CURRENT DEF/SURPL.cash(comt.+3)</b>	<b>2,259.14</b>	<b>16.48%</b>	<b>372.28</b>	<b>372.28</b>	-	-	-	-	-	-	-	-	-	-	-
<b>OVERALL DEF/SURPL.cash (com.+3)</b>	<b>(9,378.96)</b>	<b>...</b>	<b>(1,007.82)</b>	<b>(1,007.82)</b>	-	-	-	-	-	-	-	-	-	-	-
<b>III. FINANCING</b>	<b>9,378.96</b>	<b>10.75%</b>	<b>1,007.82</b>	<b>1,007.82</b>	-	-	-	-	-	-	-	-	-	-	-
<b>1. FOREIGN FINANCING</b>	<b>5,137.96</b>	<b>25.77%</b>	<b>1,324.10</b>	<b>1,324.10</b>	-	-	-	-	-	-	-	-	-	-	-
<b>a. Budget support</b>	<b>857.50</b>	<b>0.00%</b>	-	-	-	-	-	-	-	-	-	-	-	-	-
<b>-Grants-budget support</b>	<b>100.00</b>	<b>0.00%</b>	-	-	-	-	-	-	-	-	-	-	-	-	-
Capital Support	100.00	0.00%	-	-	-	-	-	-	-	-	-	-	-	-	-
Bilateral grant for investment expense	100.00	0.00%	-	-	-	-	-	-	-	-	-	-	-	-	-
<b>-Debt and related liabilities-budget support</b>	<b>757.50</b>	<b>0.00%</b>	-	-	-	-	-	-	-	-	-	-	-	-	-
Foreign borrowing	757.50	0.00%	-	-	-	-	-	-	-	-	-	-	-	-	-
Foreign borrowings from multilateral agencies	757.50	0.00%	-	-	-	-	-	-	-	-	-	-	-	-	-
<b>b. Project aid</b>	<b>5,465.65</b>	<b>24.63%</b>	<b>1,346.26</b>	<b>1,346.26</b>	-	-	-	-	-	-	-	-	-	-	-
<b>Spent</b>	<b>5,465.65</b>	<b>24.88%</b>	<b>1,359.62</b>	<b>1,359.62</b>	-	-	-	-	-	-	-	-	-	-	-
<b>-Grants</b>	<b>862.45</b>	<b>8.33%</b>	<b>71.87</b>	<b>71.87</b>	-	-	-	-	-	-	-	-	-	-	-
Bilateral grant for investment expense	862.45	8.33%	71.87	71.87	-	-	-	-	-	-	-	-	-	-	-
<b>-Debt and related liabilities</b>	<b>4,603.20</b>	<b>27.98%</b>	<b>1,287.75</b>	<b>1,287.75</b>	-	-	-	-	-	-	-	-	-	-	-
Foreign borrowing	4,603.20	27.98%	1,287.75	1,287.75	-	-	-	-	-	-	-	-	-	-	-
Foreign borrowings from multilateral agencies	1,841.28	3.93%	72.35	72.35	-	-	-	-	-	-	-	-	-	-	-
Foreign borrowings from bilateral agencies	2,761.92	44.01%	1,215.40	1,215.40	-	-	-	-	-	-	-	-	-	-	-
<b>Pending</b>		<b>...</b>	<b>(13.36)</b>	<b>(13.36)</b>	-	-	-	-	-	-	-	-	-	-	-

TOFE: BUDGET IMPLEMENTATION FOR 2021															
	2020 C.B.L.	Total Act /BL2020	Total Act	Jan-21	Feb-21	Mar-21	Apr-21	May-21	Jun-21	Jul-21	Aug-21	Sep-21	Oct-21	Nov-21	Dec-21
c. Amortization on external debts	(1,185.19)	...	(22.16)	(22.16)	-	-	-	-	-	-	-	-	-	-	-
<b>2. DOMESTIC FINANCING</b>	<b>700.00</b>	<b>-16.49%</b>	<b>(115.46)</b>	<b>(115.46)</b>	-	-	-	-	-	-	-	-	-	-	-
a. Net bank financing (monetary suvey)	700.00	-16.49%	(115.46)	(115.46)	-	-	-	-	-	-	-	-	-	-	-
- Government's deposits	700.00	-16.49%	(115.46)	(115.46)	-	-	-	-	-	-	-	-	-	-	-
<b>3. OUTSTANDING OPERATIONS</b>		...	<b>(200.82)</b>	<b>(200.82)</b>	-	-	-	-	-	-	-	-	-	-	-
Error		...	(0.00)	(0.00)	-	-	-	-	-	-	-	-	-	-	-
Exchange rate (R/\$)		...		4,065	-	-	-	-	-	-	-	-	-	-	-
Provincial revenue	<b>1,277.06</b>	<b>5.24%</b>	<b>66.96</b>	<b>66.96</b>	-	-	-	-	-	-	-	-	-	-	-
o.w. provincial tax revenue	1,050.32	5.79%	60.82	60.82	-	-	-	-	-	-	-	-	-	-	-
o.w. prov. non-tax revenue	213.93	1.93%	4.14	4.14	-	-	-	-	-	-	-	-	-	-	-
o.w. prov. Transfer from central	12.81	15.62%	2.00	2.00	-	-	-	-	-	-	-	-	-	-	-
Provincial expenditure	<b>1,559.62</b>	<b>0.89%</b>	<b>13.93</b>	<b>13.93</b>	-	-	-	-	-	-	-	-	-	-	-
o.w. wage and salary	640.54	1.00%	6.41	6.41	-	-	-	-	-	-	-	-	-	-	-
o.w. non-wage	837.36	0.90%	7.52	7.52	-	-	-	-	-	-	-	-	-	-	-
o.w. investment	81.72	0.00%	-	-	-	-	-	-	-	-	-	-	-	-	-
Contribution from casino and Lottery	201.23	0.20%	0.40	0.40	-	-	-	-	-	-	-	-	-	-	-

**Revenue and Trade Relate Tax 2020-2021**

**Tax and Non Tax Revenue 2020-2021**

**Current Expenditures and Domestic Financing 2020-2021**

**Wage and Non-wage 2020-2021**


Source: MEF

**Defense and Security and Civil Administrative Expenditure 2020-2021**

**Multilateral and Bilateral Disbursements 2020-2021**


# CURRENT BUDGET EXPENDITURE BY MINISTRY 2021

Unit: Billion Riel

	2021 C.B.L.	Total Act /BL2021	Total Act	Jan-21	Feb-21	Mar-21	Apr-21	May-21	Jun-21	Jul-21	Aug-21	Sep-21	Oct-21	Nov-21	Dec-21
<b>Total Current Expenditures</b>	<b>17,446,841</b>	<b>5.90%</b>	<b>1,030,056</b>	<b>1,030,056</b>											
<b>I. General Administration</b>	<b>1,815,921</b>	<b>7.25%</b>	<b>131,724</b>	<b>131,724</b>											
01. Royal Palace	82,393	5.53%	4,559	4,559											
02. National Assembly	162,699	14.84%	24,147	24,147											
03. Senate	76,052	15.16%	11,531	11,531											
04. Counstitutional Council	12,920	22.05%	2,849	2,849											
05.1 Council of Minister	397,101	8.07%	32,061	32,061											
05.4 CDC	13,691	0.67%	92	92											
07.2 Interior-Administration	38,878	4.33%	1,683	1,683											
08. Relations Assembly and Inspections	161,425	0.71%	1,152	1,152											
09. Foreign Affairs and Int'l Cooperation	468,559	5.19%	24,330	24,330											
10. Economy and Finance	92,784	3.85%	3,574	3,574											
14. Planning	109,926	2.91%	3,199	3,199											
28. Urbanization and Construction	87,422	1.35%	1,177	1,177											
30. National Election Committee	12,948	5.22%	675.82	676											
31. National Audit Authority	42,549	4.87%	2,071	2,071											
33.1 Anti-corruption Authority	56,574	3.01%	1,701	1,701											
34. Public Function	4,715,869	7.83%	369,468	369,468											
<b>II. Defense and Security</b>	<b>2,565,862</b>	<b>7.00%</b>	<b>179,501</b>	<b>179,501</b>											
06. National Defense	1,686,858	10.99%	185,457	185,457											
07.1 Interior - Public Security	298,407	5.67%	16,923	16,923											
26. Justice	164,742	2.74%	4,510	4,510											
<b>III. Social Administrative</b>	<b>6,048,675</b>	<b>5.00%</b>	<b>302,168</b>	<b>302,168</b>											
11. Information	80,558	3.93%	3,165	3,165											
12. Public Health	1,030,290	5.44%	56,035	56,035											
16. Education, Youth and Sport	3,024,413	4.35%	131,641	131,641											
18. Culture and Fine-Arts	165,056	2.29%	3,777	3,777											
19. Environment	85,498	3.33%	2,848	2,848											
21. Social Affair & Veteran	1,287,695	7.33%	94,332	94,332											
23. Public Worship and Religion	66,270	2.97%	1,970	1,970											
24. Woman Affairs	44,538	3.65%	1,627	1,627											
32. Labour and Vocational Training	264,357	2.56%	6,772	6,772											
<b>IV. Economy Administrative</b>	<b>1,459,755</b>	<b>1.90%</b>	<b>27,703</b>	<b>27,703</b>											
05.3 Civil Aviation Secretariate	49,555	2.71%	1,344	1,344											
13. Industry, Mines and Energy	54,808	2.42%	1,328	1,328											
15. Commerce	123,743	2.29%	2,833	2,833											
17. Agriculture, Forestry and Fishery	261,553	2.96%	7,738	7,738											
20. Rural Development	184,355	1.21%	2,231	2,231											
22. Posts and Telecommunications	77,655	2.43%	1,890	1,890											
25. Public Works and Transport	408,326	1.21%	4,945	4,945											
27. Tourism	84,175	2.04%	1,718	1,718											
29. Water Resources and Meteorology	158,619	1.30%	2,060	2,060											
35. Industry and Handicrafts	56,966	2.84%	1,615	1,615											
<b>V. Miscellaneous</b>	<b>3,406,621</b>	<b>5.84%</b>	<b>198,993</b>	<b>198,993</b>											
99.Unexpect Expenditure	3,406,621	5.84%	198,993	198,993											



## **NOTE**



TOFE report was issued based on temporary data as following:

1. Data on Revenue at National level was received on February 20, 2021
2. Data on Expenditure at National Level was received on February 18, 2021
3. Data on Loan and Grant of multilateral and bilateral was retrieved on February 13, 2021
4. Financial Operation Data (Credit Bank) was received on February 17, 2021

TOFE report will be updated in the next released.

