

State Budget Implementation in August 2019



Brief Report

Following the latest assessment of macroeconomic performance in early 2019, Cambodia has maintained strong economic growth up to 7.5 percent in 2018 and is projected to grow at a rate of 7.1 percent in 2019 while the inflation has been at manageably low rate coincided with the stability of the exchange rate.

In August 2019, according to the National Treasury preliminary data, the budgetary central government achieved the total domestic revenue of KHR **2,143.01** billion or in equivalent to **10.83** percent against the 2019 budget law, signifying the increased by **26.30** percent compared to the same month in 2018. Of the total domestic revenue, the tax revenue accounted for KHR **1,832.98** billion and non-tax revenue for KHR **304.34** billion. As of August 2019, the total domestic revenue has been achieved by KHR **15,693.41** billion or in equivalent to **79.31** percent against the 2019 budget law, marking the increase by **24.31** percent compared to the same period last year. The growth has been mainly attributed to the increase of non-tax revenue (**33.65** percent), indirect taxes (**26.89** percent), international trade taxes (**24.02** percent), and direct taxes (**14.55** percent).

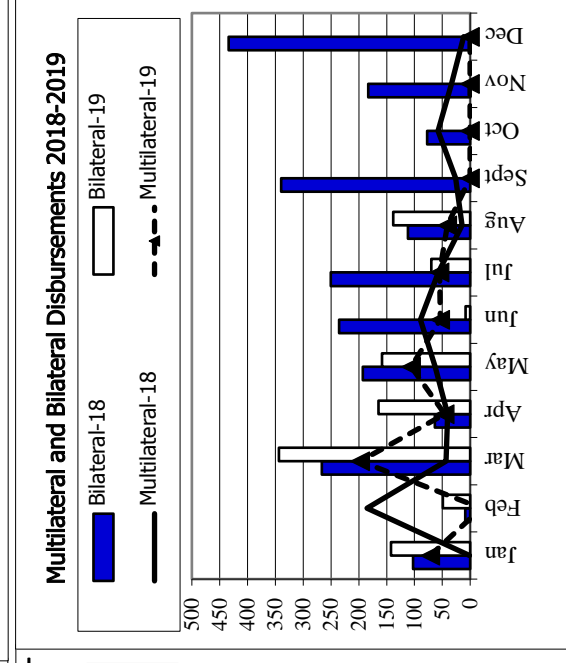
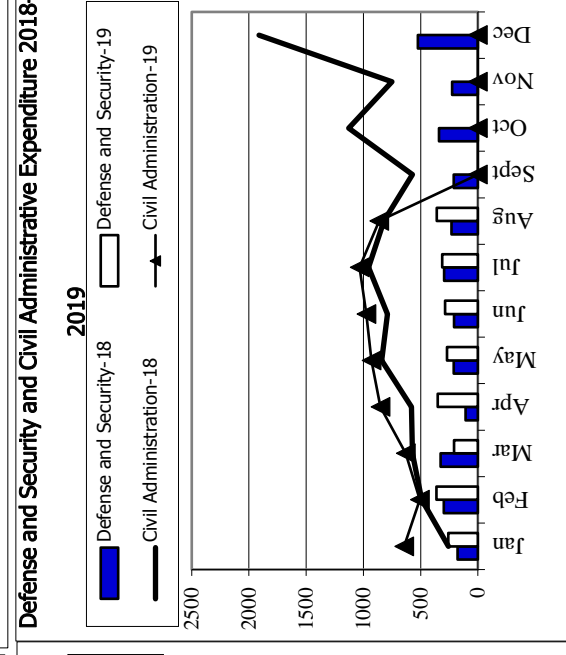
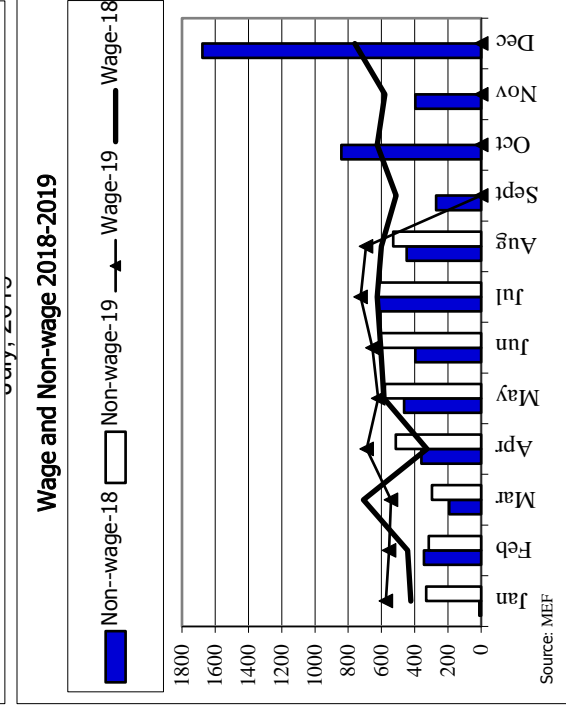
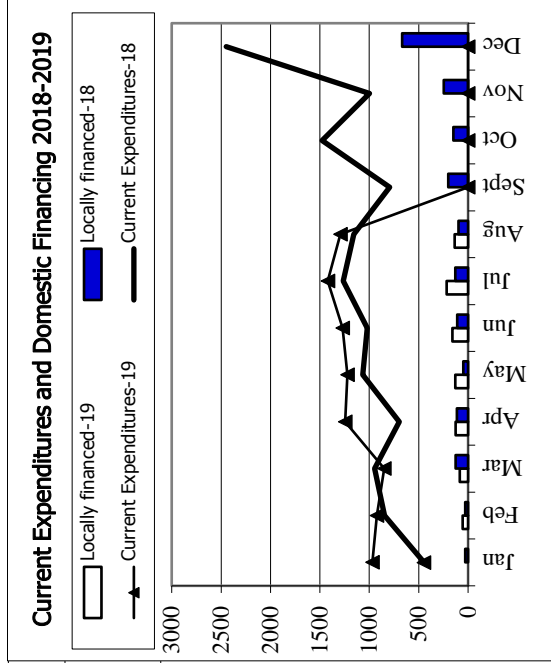
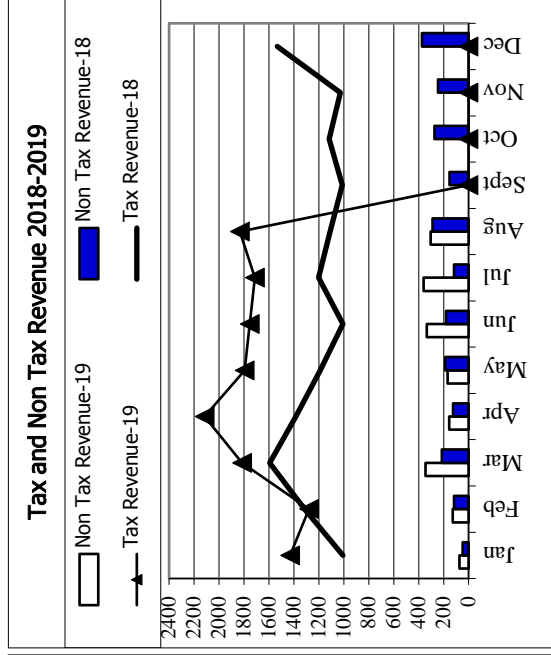
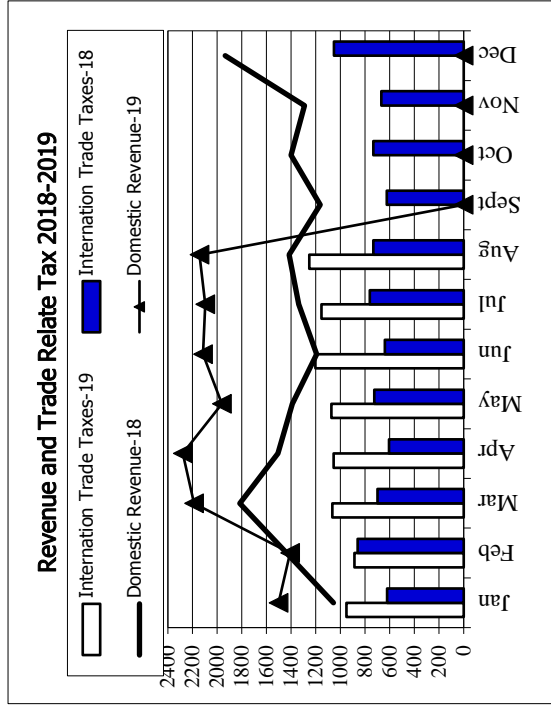
In August 2019, the budgetary central government, on the other hand, executed the total expenditures of KHR **1,696.68** billion or equal to **6.89** percent against the 2019 budget law, decreased by **16.61** percent compared to the same month last year. As of August 2019, the total expenditures have been achieved KHR **12,430.33** billion or equal to **50.46** percent against the 2019 budget law, marking the decrease by **5.69** percent compared to the same period last year. The accumulated current expenditure execution has reached KHR **9,191.94** billion indicating the increase by **6.13** percent, of which the salary expenses and other expenses accounted for KHR **5,052.34** billion and KHR **3,791.33** billion, respectively.

Based on this preliminary data, in conclusion, the implementation on domestic revenue collection have been well performed reflected by the increasing rate of **24.31** percent while the expenditure execution decreased by **5.69** percent due to the decrease in capital expenditure implementation at the rate of **28.35** percent. As a result, the current budget balance has achieved the surplus of KHR **6,405.22** billion and overall budget balance has achieved the surplus of KHR **3,263.07** billion.



COMPARISON OF BUDGET IMPLEMENTATION 2018-2019

Unit: Billion RKH



តារាងប្រតិបត្តិការហិរញ្ញវត្ថុឆ្នាំ ២០១៩ TOFE: BUDGET IMPLEMENTATION FOR 2019

គិតជា ម៉ឺលានរៀល

	ច្បាប់ថវិកា ឆ្នាំ ២០១៩	ការអនុវត្ត /ច្បាប់	សរុប ការអនុវត្ត	មករា ១៩	កក្កដា ១៩	មីនា ១៩	មេសា ១៩	ឧសភា ១៩	មិថុនា ១៩	កក្កដា ១៩	សីហា ១៩	កញ្ញា ១៩	តុលា ១៩	វិច្ឆិកា ១៩	ធ្នូ ១៩
I. DOMESTIC REVENUE	19,786.26	79.31%	15,693.41	1,501.25	1,409.31	2,186.93	2,279.03	1,960.96	2,115.14	2,097.78	2,143.01	-	-	-	-
1.CURRENT REVENUE	19,593.11	79.61%	15,597.15	1,501.25	1,405.98	2,159.60	2,270.15	1,960.83	2,089.17	2,072.85	2,137.31	-	-	-	-
a. TAX REVENUE	16,879.00	81.36%	13,733.46	1,429.02	1,279.81	1,815.45	2,115.09	1,793.93	1,754.47	1,712.70	1,832.98	-	-	-	-
Domestic tax revenue	14,468.00	81.97%	11,860.05	1,201.42	1,096.04	1,607.39	1,871.55	1,560.27	1,513.12	1,456.36	1,553.91	-	-	-	-
Direct Tax (income tax, profits tax)	4,330.00	74.35%	3,219.17	250.81	210.61	541.93	816.80	486.81	308.52	302.76	300.92	-	-	-	-
Indirect Tax	10,138.00	85.23%	8,640.89	950.61	885.42	1,065.45	1,054.74	1,073.46	1,204.59	1,153.61	1,253.00	-	-	-	-
o.w/ - Excise Tax on specific goods	900.00	70.31%	632.77	65.09	77.08	70.07	70.05	100.13	90.13	70.08	90.13	-	-	-	-
o.w/ -Special Excise Tax(petroleum,others)	3,152.00	108.85%	3,430.95	380.81	339.66	389.24	440.56	444.78	457.53	476.55	501.81	-	-	-	-
o.w/ - Excise Tax on specific services	85.00	51.79%	44.02	4.57	6.69	4.59	1.66	5.91	6.85	5.85	7.90	-	-	-	-
Other tax revenues	99.50	87.01%	86.58	6.79	6.43	13.11	16.47	5.86	13.71	12.55	11.65	-	-	-	-
Taxes on international trade	2,411.00	77.70%	1,873.40	227.60	183.77	208.07	243.54	233.67	241.35	256.34	279.07	-	-	-	-
Taxes and duties on imports	2,361.00	77.93%	1,840.03	223.07	180.96	203.60	239.48	228.03	237.71	252.53	274.65	-	-	-	-
o.w/ -Customs duties on imports	1,563.00	88.69%	1,386.15	166.07	129.94	150.01	168.82	180.11	181.47	201.95	207.78	-	-	-	-
-Customs duties on petroleum products	340.00	53.61%	182.27	20.80	20.79	19.28	30.02	17.84	24.22	21.15	28.17	-	-	-	-
-Additional tax on oil product - Road maintenance	342.00	59.77%	204.41	24.35	21.33	17.61	35.56	24.42	24.98	24.34	31.81	-	-	-	-
-Import tax for materials used for medical production	5.50	155.46%	8.55	-	-	6.37	-	-	2.18	-	-	-	-	-	-
Taxes and duties on exports	50.00	66.74%	33.37	4.53	2.81	4.47	4.06	5.64	3.64	3.81	4.42	-	-	-	-
	10.00	73.00%	7.30	0.90	0.41	1.47	1.43	1.17	0.84	0.48	0.60	-	-	-	-
o.w/-Tax on rubber exports	33.00	56.99%	18.81	2.69	1.58	2.33	2.04	1.92	2.08	2.81	3.36	-	-	-	-
-Tax on export of agricultural products	6.50	102.13%	6.64	0.86	0.77	0.61	0.54	2.45	0.52	0.47	0.42	-	-	-	-
b. NON TAX REVENUE	2,714.11	68.67%	1,863.69	72.23	126.17	344.14	155.06	166.90	334.70	360.15	304.34	-	-	-	-
State Property Revenue	127.42	185.11%	235.86	3.03	4.38	169.96	9.17	8.67	16.18	8.50	15.98	-	-	-	-
Concession and rental land	106.17	61.36%	65.14	3.02576	4.38	4.06	7.17	6.17	15.86	8.50	15.98	-	-	-	-
Public Enterprises Income	21.25	803.38%	170.72	-	-	165.90	2.00	2.50	0.32	-	-	-	-	-	-
Income from Sales, Rental of Properties and Services	2,295.83	63.59%	1,459.88	67.3859	119.63	143.69	121.99	135.04	274.18	338.35	259.61	-	-	-	-
Income of administrative public enterprises - operational services (for profit)	955.98	48.77%	466.21	45.89	50.13	4.41	79.73	17.77	120.60	56.29	91.39	-	-	-	-
Sales of Property of Public Administration	103.67	90.54%	93.86	6.60	9.76	10.35	10.60	11.38	14.26	10.50	20.42	-	-	-	-
Administrative fees	806.24	69.84%	563.06	11.87	52.69	121.19	13.07	83.88	102.31	89.95	88.10	-	-	-	-
Sales of Services	75.10	83.88%	62.99	2.81	2.60	2.71	12.32	9.30	12.87	11.21	9.15	-	-	-	-
	322.16	78.75%	253.68	0.06	3.92	4.12	4.29	10.26	15.90	166.20	48.93	-	-	-	-
Other Rental of immovable properties	32.69	61.39%	20.07	0.16	0.53	0.91	1.97	2.44	8.24	4.21	1.60	-	-	-	-
Other non tax	290.86	57.74%	167.95	1.82	2.16	30.49	23.90	23.19	44.34	13.30	28.75	-	-	-	-
o.w/ Other exceptional revenues	-	...	29.08	1.50	0.14	1.62	20.57	4.42	-	-	0.82	-	-	-	-

ការងារប្រតិបត្តិការហិរញ្ញវត្ថុឆ្នាំ ២០១៩ TOFE: BUDGET IMPLEMENTATION FOR 2019

គិតជា ម៉ឺលានរៀល

	ច្បាប់ថវិកា ឆ្នាំ ២០១៩	ការអនុវត្ត /ច្បាប់	សរុប ការអនុវត្ត	មករា ១៩	កក្កដា ១៩	មីនា ១៩	មេសា ១៩	ឧសភា ១៩	មិថុនា ១៩	កក្កដា ១៩	សីហា ១៩	កញ្ញា ១៩	តុលា ១៩	វិច្ឆិកា ១៩	ធ្នូ ១៩
2. CAPITAL REVENUE	193.15	49.83%	96.25	-	3.33	27.33	8.88	0.13	25.96	24.93	5.70	-	-	-	-
Other financial assets	193.15	49.83%	96.25	-	3.33	27.33	8.88	0.13	25.96	24.93	5.70	-	-	-	-
II. BUDGET EXPENDITURE	24,859.08	50.00%	12,430.33	1,270.21	1,097.56	1,561.85	1,671.08	1,702.18	1,579.15	1,851.62	1,696.68	-	-	-	-
1. CURRENT EXPENDITURE	16,827.28	54.63%	9,191.94	967.32	924.93	849.23	1,245.38	1,221.24	1,269.68	1,420.42	1,293.74	-	-	-	-
a. Wages	7,862.54	64.26%	5,052.34	573.79	554.62	542.95	688.26	619.72	654.88	725.15	692.97	-	-	-	-
Personnel charges-civil administrative	4,661.10	68.79%	3,206.45	314.74	297.84	370.36	340.51	356.77	385.11	448.14	692.97	-	-	-	-
o.w/ Diplomatic salary	4.33	66.21%	2.87	0.93	-	0.83	-	0.04	1.02	-	0.04	-	-	-	-
Personnel charges-national defence and security	3,201.44	57.66%	1,845.89	259.06	256.78	172.59	347.74	262.95	269.77	277.01	-	-	-	-	-
b. Non wage	8,964.74	46.18%	4,139.60	393.53	370.31	306.28	557.13	601.52	614.80	695.28	600.77	-	-	-	-
-Purchases	1,617.94	41.56%	672.47	15.69	123.93	57.87	17.23	112.12	58.36	132.55	154.72	-	-	-	-
Maintenance supplies	283.27	30.30%	85.83	1.94	1.98	2.61	1.83	5.56	8.10	11.58	52.24	-	-	-	-
Administration supplies	232.89	33.49%	77.98	1.13	1.24	2.69	2.41	4.48	12.03	34.21	19.79	-	-	-	-
Food and agricultural products	158.47	70.57%	111.84	-	35.63	30.64	0.02	1.29	6.39	33.38	4.49	-	-	-	-
Clothing and decoration	166.65	13.72%	22.87	3.69	0.01	0.35	0.57	1.46	3.38	12.14	1.28	-	-	-	-
Small tools, material, furniture and equip.	459.90	43.19%	198.63	8.64	81.00	12.42	7.56	10.84	14.30	29.55	34.33	-	-	-	-
Energy and water	165.95	40.65%	67.46	0.29	4.08	9.12	4.71	5.39	12.56	10.32	20.99	-	-	-	-
Health supplies and equipment	147.67	72.47%	107.01	-	-	0.04	-	83.09	1.27	1.38	21.22	-	-	-	-
Other supplies	3.17	26.86%	0.85	-	-	-	0.13	-	0.32	-	0.40	-	-	-	-
-Services	1,730.70	30.52%	528.12	34.97	19.16	57.31	43.37	82.79	80.54	110.14	99.83	-	-	-	-
o.w/ -Rentals and charges (furniture)	23.07	65.46%	15.10	8.02	0.34	2.10	0.58	0.60	3.01	0.42	0.04	-	-	-	-
-Maintenance and repairs	871.27	17.40%	151.60	3.81	0.99	13.81	11.76	17.99	20.52	36.48	46.24	-	-	-	-
-Financial charges	525.09	66.33%	348.27	62.61	55.38	10.32	43.16	23.18	7.17	74.44	72.01	-	-	-	-
o.w/ -Interests on domestic debt	-	...	0.17	-	-	-	-	0.17	-	-	-	-	-	-	-
-Interests on external debt	525.09	58.02%	304.64	62.61	50.12	9.58	38.47	6.98	1.83	69.09	65.96	-	-	-	-
-Social Benefit	1,983.79	57.72%	1,145.10	72.89	92.87	74.87	181.37	267.32	188.10	87.76	179.94	-	-	-	-
o.w/- Social Security Benefits	868.87	66.48%	577.61	66.59	66.18	37.04	105.66	71.71	148.99	-	81.44	-	-	-	-
-Social Assistance to citizens	914.18	53.59%	489.88	4.58	19.92	25.89	66.70	188.07	23.34	75.33	86.06	-	-	-	-
-Social Assistance to social and cultural entities	139.50	48.48%	67.63	1.67	6.63	11.79	8.86	7.27	9.59	9.43	12.38	-	-	-	-
-Other social benefits	11.21	75.00%	8.41	-	-	-	-	-	5.60	2.80	-	-	-	-	-
-Grants	1,552.86	70.64%	1,096.98	207.11	15.47	82.90	153.77	104.60	204.12	255.12	73.89	-	-	-	-
-Other non wage	1,554.35	22.43%	348.65	0.25	63.50	23.02	118.23	11.51	76.51	35.26	20.38	-	-	-	-
o.w/ -Unanticipated Expense(Reserve)	1,019.01	0.00%	-	-	-	-	-	-	-	-	-	-	-	-	-
-Unexpected expenditures(Others exp.)	50.00	0.00%	-	-	-	-	-	-	-	-	-	-	-	-	-

តារាងប្រតិបត្តិការហិរញ្ញវត្ថុឆ្នាំ ២០១៩ TOFE: BUDGET IMPLEMENTATION FOR 2019

គិតជា ម៉ឺលានរៀល

	ច្បាប់ថវិកា ឆ្នាំ ២០១៩	ការអនុវត្ត /ច្បាប់	សរុប ការអនុវត្ត	មករា ១៩	កក្កដា ១៩	មីនា ១៩	មេសា ១៩	ឧសភា ១៩	មិថុនា ១៩	កក្កដា ១៩	សីហា ១៩	កញ្ញា ១៩	តុលា ១៩	វិច្ឆិកា ១៩	ធ្នូ ១៩
2. CAPITAL	8,031.80	40.32%	3,238.40	302.89	172.63	712.63	425.70	480.95	309.47	431.20	402.94	-	-	-	-
Domestic Financing	2,708.03	33.40%	904.51	-	55.13	82.69	126.65	127.92	159.12	217.90	135.09	-	-	-	-
Tangible fixed assets and land	2,708.03	33.38%	904.07	-	55.13	82.69	126.65	127.92	159.12	217.46	135.09	-	-	-	-
Investments	-	...	0.44	-	-	-	-	-	-	0.44	-	-	-	-	-
External assistance (Project)	5,323.77	43.84%	2,333.89	302.89	117.50	629.93	299.05	353.03	150.35	213.29	267.85	-	-	-	-
CURRENT DEF/SURPL.comt (I.I-IL.I)	2,765.83	231.58%	6,405.22	533.93	481.06	1,310.37	1,024.77	739.60	819.49	652.43	843.58	-	-	-	-
CURRENT DEF/SURPL.cash(comt.+3)	2,765.83	231.58%	6,405.22	533.93	481.06	1,310.37	1,024.77	739.60	819.49	652.43	843.58	-	-	-	-
III. FINANCING	5,072.82	-64.32%	(3,263.07)	(231.04)	(311.75)	(625.08)	(607.95)	(258.77)	(535.99)	(246.16)	(446.33)	-	-	-	-
I. FOREIGN FINANCING	4,667.82	38.83%	1,812.49	270.10	103.16	578.41	174.06	279.29	163.66	169.50	74.30	-	-	-	-
a. Budget support	250.00	38.75%	96.88	-	-	-	-	-	20.47	69.47	6.94	-	-	-	-
-Grants-budget support	125.00	8.28%	10.35	-	-	-	-	-	-	6.01	4.34	-	-	-	-
Capital Support	125.00	8.28%	10.35	-	-	-	-	-	-	6.01	4.34	-	-	-	-
Bilateral grant for investment expense	125.00	8.28%	10.35	-	-	-	-	-	-	6.01	4.34	-	-	-	-
-Debt and related liabilities-budget support	125.00	69.22%	86.53	-	-	-	-	-	20.47	63.46	2.60	-	-	-	-
Foreign borrowing	125.00	69.22%	86.53	-	-	-	-	-	20.47	63.46	2.60	-	-	-	-
Foreign borrowings from multilateral agencies	125.00	69.22%	86.53	-	-	-	-	-	20.47	63.46	2.60	-	-	-	-
b. Project aid	5,323.77	43.95%	2,340.01	291.73	168.18	621.70	318.94	313.85	152.50	208.19	264.91	-	-	-	-
Spent	5,323.77	43.84%	2,333.89	302.89	117.50	629.93	299.05	353.03	150.35	213.29	267.85	-	-	-	-
-Grants	1,064.75	66.67%	709.84	88.73	88.73	88.73	88.73	88.73	88.73	88.73	88.73	-	-	-	-
Bilateral grant for investment expense	1,064.75	66.67%	709.84	88.73	88.73	88.73	88.73	88.73	88.73	88.73	88.73	-	-	-	-
-Debt and related liabilities	4,259.02	38.13%	1,624.06	214.16	28.77	541.20	210.32	264.30	61.62	124.56	179.12	-	-	-	-
Foreign borrowing	4,259.02	38.13%	1,624.06	214.16	28.77	541.20	210.32	264.30	61.62	124.56	179.12	-	-	-	-
Foreign borrowings from multilateral agencies	4,259.02	12.91%	549.88	71.62	(20.12)	197.50	45.45	105.99	53.53	55.02	40.89	-	-	-	-
Foreign borrowings from bilateral agencies	-	...	1,074.18	142.54	48.89	343.70	164.87	158.31	8.09	69.54	138.24	-	-	-	-
Pending		...	6.11	(11.16)	50.68	(8.24)	19.89	(39.18)	2.15	(5.10)	(2.94)	-	-	-	-
c. Amortization on external debts	(905.95)	...	(624.40)	(21.63)	(65.01)	(43.29)	(144.88)	(34.56)	(9.31)	(108.16)	(197.55)	-	-	-	-
2. DOMESTIC FINANCING	4,050.00	-2.88%	(116.54)	(9.10)	(28.76)	12.60	11.95	20.07	(4.11)	(78.51)	(40.67)	-	-	-	-
a. Net bank financing (monetary survey)	4,050.00	-84.13%	(3,407.18)	(218.76)	(120.71)	(1,478.95)	(1,001.39)	(255.93)	(212.27)	(78.51)	(40.67)	-	-	-	-
- Government's deposits	4,050.00	-84.13%	(3,407.18)	(218.76)	(120.71)	(1,478.95)	(1,001.39)	(255.93)	(212.27)	(78.51)	(40.67)	-	-	-	-
e. \$Acc.-gap between NBC &MEF		...	3,290.65	209.66	91.94	1,491.55	1,013.34	276.00	208.16	-	-	-	-	-	-
Error		...	0.00	(0.00)	0.00	(0.00)	(0.00)	(0.00)	0.00	(0.00)	0.00	-	-	-	-
Exchange rate (R/\$)		...		4,011	4,003	4,015	4,050	4,062	4,066	4,086	4,088	-	-	-	-
Provincial revenue	1,476.95	101.39%	1,497.41	154.85	124.77	241.73	122.41	147.56	262.32	239.22	204.55	-	-	-	-

តារាងប្រតិបត្តិការហិរញ្ញវត្ថុឆ្នាំ ២០១៩ TOFE: BUDGET IMPLEMENTATION FOR 2019

គិតជា ម៉ឺលានរៀល

	ច្បាប់ថវិកា ឆ្នាំ ២០១៩	ការអនុវត្ត /ច្បាប់	សរុប ការអនុវត្ត	មករា ១៩	កុម្ភៈ ១៩	មីនា ១៩	មេសា ១៩	ឧសភា ១៩	មិថុនា ១៩	កក្កដា ១៩	សីហា ១៩	កញ្ញា ១៩	តុលា ១៩	វិច្ឆិកា ១៩	ធ្នូ ១៩
o.w. provincial tax revenue	1,351.62	82.58%	1,116.11	119.61	119.24	124.00	119.89	102.32	146.83	200.26	183.96	-	-	-	-
o.w. prov. non-tax revenue	41.52	47.95%	19.91	2.40	1.64	2.25	1.52	3.62	1.29	2.59	4.60	-	-	-	-
o.w. prov. Transfer from central	83.81	431.22%	361.40	32.85	3.89	115.48	1.00	41.62	114.19	36.37	16.00	-	-	-	-
Provincial expenditure	1,148.55	62.11%	713.37	25.27	60.00	119.58	88.34	139.08	51.71	135.69	93.69	-	-	-	-
o.w. wage and salary	79.01	60.68%	47.94	1.89	6.76	5.87	7.30	6.37	6.75	6.57	6.43	-	-	-	-
o.w. non-wage	749.84	77.40%	580.37	20.06	45.51	94.01	77.21	119.95	36.91	115.75	70.98	-	-	-	-
	319.70	26.61%	85.06	3.32	7.73	19.70	3.84	12.77	8.05	13.37	16.28	-	-	-	-
Provincial Balance	328.39	238.75%	784.04	129.58	64.77	122.15	34.07	8.48	210.61	103.53	110.86	-	-	-	-
Contribution from casino and Lottery	229.02	91.15%	208.74	-	-	-	-	-	11.19	155.22	42.34	-	-	-	-

ថ្ងៃ ខែ ឆ្នាំកុរ ឯកស័ក ព.ស. ២៥៦៣
រាជធានីភ្នំពេញ ថ្ងៃទី ខែ ឆ្នាំ២០១៩

ថ្ងៃ ខែ ឆ្នាំកុរ ឯកស័ក ព.ស. ២៥៦៣
រាជធានីភ្នំពេញ ថ្ងៃទី ខែ ឆ្នាំ២០១៩

អគ្គនាយករង
អគ្គនាយកដ្ឋានការងារនយោបាយ

ប្រធាននាយកដ្ឋាន
នាយកដ្ឋានស្ថិតិ និងវិភាគសេដ្ឋកិច្ច

ប្រធានការិយាល័យ
ស្ថិតិហិរញ្ញវត្ថុសាធារណៈ

ចំណាយបច្ចុប្បន្នក្រសួង ឆ្នាំ ២០១៩/ CURRENT BUDGET EXPENDITURE BY MINISTRY 2019

គិតជាលានរៀល

	ច្បាប់ថវិកា ឆ្នាំ ២០១៩	ការអនុវត្ត /ច្បាប់	មករា ១៩	កុម្ភៈ ១៩	មីនា ១៩	មេសា ១៩	ឧសភា ១៩	មិថុនា ១៩	កក្កដា ១៩	សីហា ១៩	កញ្ញា ១៩	តុលា ១៩	វិច្ឆិកា ១៩	ធ្នូ ១៩
Total Current Expenditures	16,827,280	54.63%	9,191,936	967,193	893,181	837,719	1,239,129	1,215,484	1,269,646	1,403,325	1,366,259			
I. General Administration	2,451,824	99.81%	2,447,076	421,718	158,901	221,353	372,601	185,638	386,736	508,031	192,098			
01. Royal Palace	98,414	62.20%	61,218	2,679	8,067	8,394	8,836	8,508	9,966	7,193	7,575			
02. National Assembly	183,783	75.98%	139,632	50,998	-	45,811	-	-	25,229	17,594	-			
03. Senate	87,233	74.26%	64,780	25,936	-	492	18,959	14	11,868	7,538	-			
04. Counstitutional Council	11,523	85.89%	9,897	4,054	-	2,676	-	8	-	2,800	360			
05.1 Council of Minister	415,409	48.83%	202,851	4,315	19,333	25,233	19,038	29,526	27,514	53,027	24,865			
05.4 CDC	15,430	44.65%	6,889	83	83	194	106	814	1,525	958	3,127			
07.2 Interior-Administration	206,039	67.54%	139,160	20,211	11,081	20,571	10,624	12,101	19,968	40,091	4,513			
08. Relations Assembly and Inspections	41,556	55.32%	22,987	1,425	1,541	2,877	1,682	3,146	3,066	4,858	4,393			
09. Foreign Affairs and Int'l Cooperation	148,849	51.87%	77,201	15,283	10,425	11,073	7,135	6,648	18,657	4,407	3,573			
10. Economy and Finance	796,115	187.78%	1,494,941	281,764	93,182	82,596	282,873	91,409	233,229	327,207	102,681			
14. Planning	91,138	53.65%	48,896	3,980	5,395	5,719	5,419	5,442	5,337	9,304	8,301			
28. Urbanization and Construction	162,996	45.35%	73,924	4,083	4,763	5,839	5,159	10,340	15,022	8,767	19,952			
30. National Election Committee	79,059	50.70%	40,080.63	1,708	1,164	2,386	3,835	8,711	7,790	11,153	3,333			
31. National Audit Authority	14,905	48.69%	7,257	639	646	710	643	964	651	1,356	1,649			
33.1 Anti-corruption Authority	45,856	60.49%	27,738	1,871	2,069	4,380	4,674	2,732	4,339	5,605	2,068			
34. Public Function	53,519	55.36%	29,626	2,687	1,155	2,403	3,620	5,303	2,575	6,174	5,710			
II. Defense and Security	4,057,518	60.88%	2,470,409	264,367	368,609	214,400	355,372	276,887	295,948	324,627	370,198	-	-	-
06. National Defense	2,416,438	63.71%	1,539,628	165,203	191,730	200,307	168,913	173,260	185,755	211,055	243,405			
07.1 Interior - Public Security	1,490,709	58.05%	865,400	93,857	171,085	7,233	181,150	94,722	101,214	101,223	114,915			
26. Justice	150,371	43.48%	65,381	5,307	5,794	6,860	5,309	8,905	8,979	12,348	11,878			
III. Social Administrative	6,196,796	56.87%	3,524,410	249,944	319,192	332,998	436,684	649,504	493,112	455,654	587,321	-	-	-
11. Information	85,179	62.30%	53,063	2,707	6,066	3,437	11,245	9,778	4,873	6,667	8,290			
12. Public Health	1,545,525	53.77%	831,000	32,093	40,002	57,680	99,403	321,082	51,235	84,163	145,341			
16. Education, Youth and Sport	2,949,604	55.92%	1,649,556	127,721	177,981	186,091	184,929	200,968	205,127	282,032	284,707			
18. Culture and Fine-Arts	180,146	62.55%	112,686	3,235	4,055	4,948	6,270	10,457	42,768	30,032	10,920			
19. Environment	89,742	46.22%	41,481	3,162	4,312	4,633	4,144	4,840	6,753	6,039	7,601			
21. Social Affair & Veteran	993,071	65.92%	654,656	71,060	72,795	52,805	116,379	83,899	157,332	8,360	92,024			
23. Public Worship and Religion	68,706	54.63%	37,531	2,528	3,082	3,743	3,434	4,600	5,590	5,248	9,305			
24. Woman Affairs	50,888	51.90%	26,411	1,776	1,802	2,544	2,859	3,704	5,010	3,346	5,368			
32. Labour and Vocational Training	233,936	50.45%	118,027	5,662	9,096	17,118	8,021	10,176	14,423	29,767	23,764			
IV. Economy Administrative	1,506,888	37.37%	563,195	31,164	38,520	63,499	56,949	92,031	77,123	99,175	104,734	-	-	-
05.3 Civil Aviation Secretariate	55,812	32.18%	17,962	1,144	1,197	1,173	1,206	2,670	1,203	2,997	6,371			
13. Industry, Mines and Energy	56,764	32.76%	18,599	1,324	1,551	1,926	1,951	1,861	2,334	3,109	4,543			
15. Commerce	148,168	44.84%	66,440	5,226	3,762	7,639	5,200	8,906	7,599	13,604	14,505			
17. Agriculture, Forestry and Fishery	264,924	50.72%	134,373	8,726	10,821	16,366	10,521	21,530	21,215	22,949	22,245			
20. Rural Development	183,295	25.02%	45,866	2,244	3,378	3,363	4,093	4,154	6,822	9,868	11,944			
22. Posts and Telecommunications	73,964	68.25%	50,482	1,613	2,187	2,592	2,801	19,988	5,896	8,350	7,055			
25. Public Works and Transport	409,345	25.71%	105,226	5,593	6,725	15,187	14,577	12,927	16,987	17,611	15,619			
27. Tourism	98,065	55.40%	54,325	1,645	3,647	5,463	9,398	11,322	6,981	5,222	10,646			
29. Water Resources and Meteorology	159,188	27.91%	44,431	2,134	3,321	7,051	3,553	6,303	3,143	10,535	8,392			
35. Industry and Handicrafts	57,363	44.44%	25,492	1,516	1,932	2,740	3,649	2,370	4,943	4,929	3,413			
V. Miscellaneous	2,614,254	7.15%	186,846	-	7,958	5,470	17,523	11,424	16,726	15,837	111,908	-	-	-
99.Unexpect Expenditure	2,614,254	7.15%	186,846	-	7,958	5,470	17,523	11,424	16,726	15,837	111,908			

NOTE



TOFE report was issued based on temporary data as following:

1. Data on Revenue at National level was received on September 20, 2019
2. Data on Expenditure at National Level was received on September 23, 2019
3. Data on Loan and Grant of multilateral and bilateral was retrieved on September 17, 2019
4. Financial Operation Data (Credit Bank) was received on September 17, 2019

TOFE report will be updated in the next released.

