

State Budget Implementation

November, 2020

	Page
1. Brief	1
2. TOFE	2
3. Ministry Spending	7

1. Brief Note on Monthly Budget Implementation of November 2020 (TOFE_GFSM1986)

According to the Budget Law 2020, Cambodia's economic growth during the year is projected at 6.5%. However, based on the mid-year assessment, the growth is projected to grow negatively at an unprecedented rate of 1.9% due to the rapid spread of the COVID-19 disease. In this context, the performance of the state budget could be affected both in terms of revenue and expenditure.

As of November 2020, the total domestic revenue of the budgetary central government has been achieved around 80.03% of the Budget Law 2020 decreased by 20.89% compared to the same period of implementation in the previous three years, while according to observations, the revenue has started to decline steadily since May 2020. In November 2020, the budgetary central government achieved the total domestic revenue of KHR 2,611.41 billion, signifying the significant increase of 43.28% compared to the same month in 2019. As of November 2020, the total domestic revenue has been achieved by KHR 19,281.25 billion, marking the decrease by 10.35% compared to the same period last year, in which tax revenue and non-tax revenue, decreased by 7.00% and 36.33%, respectively, while domestic capital revenue increased slightly at 2.63%. The decline was due to declining economic activity amid the COVID-19 pandemic and the implementation of the government intervention measures such as the exemption of all types of monthly taxes for tourism and the minimum tax for aviation industry.

The execution of total expenditures of the budgetary central government has been remarkably fast, reaching 74.03% of the Budget Law 2020, reflected the timely necessary interventions of the government during COVID-19 pandemic. In November 2020, the total expenditures were KHR 1,999.50 billion, an increase of 1.62% compared to November 2019. As of November 2020, the accumulated total expenditure has reached KHR 22,200.25 billion riels, indicating an increase of 12.59% compared to the same period in 2019, of which current expenditures were KHR 14,637.00 billion and capital expenditures were KHR 7,563.25 billion. The increase was due to the implementation of proactive targeted expenditures to address the impact of the COVID-19 pandemic on sectors such as health, social assistance, and the economy.

Amid the COVID-19 pandemic, the government has managed and utilized the financing effectively, which is able to sustain the above implementations in a timely manner. As of November 2020, the total financing of the budgetary central government was KHR 2,918.99 billion or equivalent to 49.50% of the Budget Law, of which 73.19% was foreign financing and 12.64% was domestic financing.

As a result of the implementation of the state budget as of November 2020, there is a budget deficit of KHR 2,918.99 billion, less than the Budget Law of 50.50%, which is supported by domestic financing on government's deposits and foreign financing, both in the form of grants and loans. Despite this, the Government of Cambodia has maintained its stable financial management.

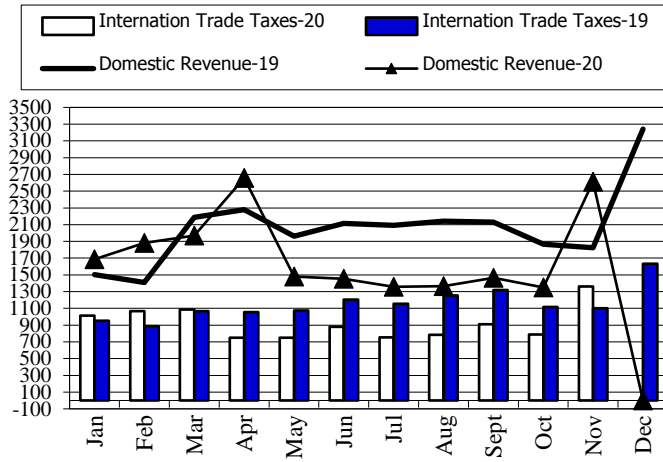
TOFE: BUDGET IMPLEMENTATION FOR 2020															
	2020 C.B.L.	Total Act /BL2020	Total Act	Jan-20	Feb-20	Mar-20	Apr-20	May-20	Jun-20	Jul-20	Aug-20	Sep-20	Oct-20	Nov-20	Dec-20
I. DOMESTIC REVENUE	24,092.67	80.03%	19,281.25	1,685.85	1,882.95	1,970.88	2,656.08	1,481.80	1,451.84	1,359.36	1,364.05	1,466.28	1,350.76	2,611.41	-
I.CURRENT REVENUE	23,899.32	80.02%	19,123.27	1,685.85	1,879.59	1,954.04	2,612.42	1,479.11	1,447.36	1,336.19	1,358.35	1,455.30	1,312.97	2,602.09	-
a. TAX REVENUE	21,091.15	83.09%	17,524.02	1,485.18	1,459.89	1,752.02	2,523.57	1,367.27	1,345.86	1,222.16	1,276.08	1,388.53	1,211.70	2,491.76	-
Domestic tax revenue	18,321.75	84.97%	15,567.55	1,273.82	1,269.79	1,532.91	2,384.20	1,215.17	1,188.43	1,064.29	1,101.87	1,227.65	1,026.37	2,283.05	-
Direct Tax (income tax, profits tax)	5,080.00	106.75%	5,423.15	259.12	203.49	447.39	1,634.11	466.22	309.08	312.44	316.54	315.88	238.45	920.43	-
Indirect Tax	13,241.75	76.61%	10,144.41	1,014.69	1,066.30	1,085.52	750.09	748.95	879.35	751.85	785.33	911.77	787.92	1,362.61	-
o.w/ - Excise Tax on specific goods	1,100.00	64.50%	709.53	60.14	95.18	58.12	60.08	70.03	70.04	35.06	65.03	60.07	65.11	70.66	-
o.w/ -Special Excise Tax(petroleum,others)	4,548.95	71.02%	3,230.79	434.81	364.04	370.95	232.88	249.36	248.48	256.01	245.78	250.35	258.51	319.61	-
o.w/ - Excise Tax on specific services	85.00	191.95%	163.16	3.70	6.72	9.43	7.16	8.06	7.08	14.14	5.09	5.74	7.20	88.83	-
Other tax revenues	135.00	153.60%	207.36	6.61	8.36	20.27	12.79	11.06	14.70	11.38	11.83	12.55	14.84	82.96	-
Taxes on international trade	2,769.40	70.65%	1,956.47	211.37	190.10	219.11	139.37	152.10	157.42	157.87	174.21	160.88	185.32	208.71	-
Taxes and duties on imports	2,719.80	66.78%	1,937.70	209.05	187.80	217.27	138.99	151.52	155.86	156.34	172.71	158.77	183.67	205.72	-
o.w/ -Customs duties on imports	1,970.40	66.78%	1,315.74	165.35	134.06	140.32	99.55	102.77	103.87	105.85	100.30	115.36	114.90	133.41	-
-Customs duties on petroleum products	310.00	85.98%	266.54	19.58	21.39	28.14	19.44	20.98	23.04	21.76	32.64	19.12	29.27	31.19	-
-Additional tax on oil product - Road maintenance	342.00	90.08%	308.07	18.55	21.60	42.52	17.14	25.83	25.37	25.34	37.49	19.21	36.91	38.11	-
-Import tax for materials used for medical production	12.90	85.27%	11.00	-	5.15	1.95	-	-	1.38	-	-	2.52	-	-	-
-others	84.50	43.02%	36.35	5.56	5.61	4.34	2.86	1.94	2.20	3.40	2.28	2.56	2.59	3.00	-
Taxes and duties on exports	49.60	37.85%	18.77	2.31	2.30	1.85	0.38	0.58	1.57	1.53	1.50	2.10	1.66	2.99	-
o.w/-Tax on timber exports	10.00	62.84%	6.28	0.20	0.52	0.65	0.23	0.36	0.64	0.72	0.75	0.78	0.55	0.89	-
-Tax on rubber exports	27.00	24.04%	6.49	1.90	1.74	0.83	0.00	0.03	0.08	0.10	0.10	0.14	0.39	1.18	-
-Tax on export of agricultural products	12.10	47.97%	5.80	0.18	0.02	0.34	0.15	0.19	0.83	0.63	0.64	1.18	0.71	0.93	-
b. NON TAX REVENUE	2,808.18	56.95%	1,599.24	200.67	419.70	202.02	88.84	111.83	101.51	114.04	82.28	66.77	101.27	110.32	-
State Property Revenue	220.30	174.51%	384.44	13.89	270.47	5.25	9.64	18.50	8.66	16.65	10.97	3.46	18.34	8.61	-
Concession and rental land	200.65	46.18%	92.66	7.00782	7.36	5.25	9.32	16.42	8.66	13.90	5.42	3.46	13.34	2.53	-
Public Enterprises Income	19.65	1484.85%	291.77	6.88	263.11	-	0.32	2.08	-	2.75	5.55	-	5.00	6.09	-
Income from Sales, Rental of Properties and Services	2,275.00	46.08%	1,048.23	181.66	133.96	180.77	62.18	87.64	67.99	93.62	47.29	49.62	50.85	92.65	-
Income of administrative public enterprises -operational services (for profit)	962.66	35.06%	337.53	61.13	53.84	53.20	6.04	28.90	23.75	43.74	11.11	9.60	11.96	34.26	-
Sales of Property of Public Administration	117.83	67.19%	79.17	5.72	8.45	8.28	10.93	5.95	7.32	9.79	6.72	3.92	8.75	3.33	-
Administrative fees	863.73	41.79%	360.98	47.25	54.33	43.34	34.35	33.01	21.29	28.17	19.99	27.56	11.29	40.40	-
Sales of Services	36.79	89.71%	33.01	1.71	1.69	1.90	1.67	3.66	4.55	1.94	1.15	1.03	9.95	3.75	-
Other transaction fees	258.77	82.40%	213.22	58.41	13.35	71.64	7.56	15.28	10.21	6.63	7.38	5.44	7.06	10.26	-

TOFE: BUDGET IMPLEMENTATION FOR 2020															
	2020 C.B.L.	Total Act /BL2020	Total Act	Jan-20	Feb-20	Mar-20	Apr-20	May-20	Jun-20	Jul-20	Aug-20	Sep-20	Oct-20	Nov-20	Dec-20
Other Rental of immovable properties	35.22	69.08%	24.33	7.45	2.29	2.42	1.63	0.85	0.85	3.34	0.94	2.06	1.84	0.66	-
Other non tax	312.88	53.24%	166.57	5.11	15.27	16.00	17.02	5.70	24.86	3.77	24.02	13.70	32.08	9.06	-
o.w/ Other exceptional revenues	-	...	21.72	3.79	0.14	-	1.00	1.22	10.72	0.36	2.53	0.85	1.11	-	-
2. CAPITAL REVENUE	193.34	81.71%	157.98	-	3.36	16.83	43.67	2.69	4.48	23.16	5.70	10.98	37.79	9.32	-
Other financial assets	193.34	81.71%	157.98	-	3.36	16.83	43.67	2.69	4.48	23.16	5.70	10.98	37.79	9.32	-
II. BUDGET EXPENDITURE	29,989.93	74.03%	22,200.25	1,118.41	2,033.02	2,400.90	2,188.43	1,531.16	2,794.44	2,167.67	1,566.38	1,869.75	2,530.58	1,999.50	-
1. CURRENT EXPENDITURE	18,036.88	81.15%	14,637.00	868.19	1,650.85	1,523.70	1,500.47	1,127.83	1,577.61	1,264.60	1,164.12	1,417.94	1,331.84	1,209.85	-
a. Wages	8,539.75	88.72%	7,576.89	571.05	657.56	829.46	575.76	658.23	768.63	768.28	648.42	716.10	707.90	675.49	-
Personnel charges-civil administrative	4,983.15	88.28%	4,399.23	301.73	383.59	453.20	380.61	369.87	477.31	471.25	354.56	386.93	424.20	395.98	-
o.w/ Diplomatic salary	5,106.00	0.08%	4.23	1.19	-	0.72	-	0.18	1.02	0.04	1.03	0.04	-	0.01	-
Personnel charges-national defence and security	3,556.60	89.35%	3,177.66	269.32	273.98	376.27	195.15	288.36	291.32	297.04	293.87	329.17	283.70	279.51	-
b. Non wage	9,497.13	74.34%	7,060.11	297.14	993.28	694.24	924.71	469.60	808.98	496.32	515.70	701.84	623.94	534.35	-
-Purchases	1,644.42	59.27%	974.63	125.21	48.00	31.15	169.72	47.09	83.47	112.59	102.99	127.09	81.62	45.71	-
Maintenance supplies	289.50	38.37%	111.08	0.52	3.75	4.51	8.58	4.97	9.63	10.77	53.76	2.81	4.14	7.64	-
Administration supplies	232.12	48.94%	113.59	0.29	1.72	6.18	7.75	12.35	15.38	19.90	8.23	20.04	8.63	13.11	-
Food and agricultural products	162.06	95.29%	154.43	-	32.97	4.96	34.05	5.93	5.22	28.75	8.07	5.81	27.85	0.81	-
Clothing and decoration	169.43	37.47%	63.49	0.90	0.14	0.64	3.09	1.12	6.46	2.33	0.61	44.35	2.15	1.69	-
Small tools, material, furniture and equip.	457.77	57.68%	264.06	123.33	4.64	7.32	11.58	15.92	26.99	29.34	15.93	10.36	9.52	9.14	-
Energy and water	163.74	67.88%	111.14	0.16	4.67	7.32	8.75	6.40	18.39	19.89	14.28	10.89	8.36	12.04	-
Health supplies and equipment	166.62	93.36%	155.56	-	0.09	0.11	95.93	0.40	1.04	1.61	1.95	32.59	20.76	1.08	-
Other supplies	3.18	40.30%	1.28	-	-	0.11	-	-	0.37	-	0.15	0.24	0.21	0.21	-
-Services	1,885.63	51.09%	963.43	10.25	55.99	55.19	77.26	82.61	85.94	99.98	132.33	120.96	115.04	127.88	-
o.w/ -Rentals and charges (furniture)	23.12	86.49%	20.00	1.98	7.91	2.03	0.26	1.24	1.93	0.96	0.23	2.27	0.29	0.90	-
-Maintenance and repairs	967.39	57.35%	554.83	1.67	9.81	15.02	23.91	49.48	50.27	60.79	96.04	91.02	79.74	77.07	-
-Financial charges	542.08	79.25%	429.59	6.57	115.41	43.71	13.32	19.29	8.24	72.56	72.76	43.30	17.60	16.83	-
o.w/ -Interests on domestic debt	-	...	0.19	-	0.12	-	-	-	0.07	-	-	-	-	-	-
-Interests on external debt	542.08	65.49%	355.03	6.53	101.68	37.19	12.58	6.25	1.65	66.01	65.69	36.78	11.08	9.60	-
-Social Benefit	2,163.72	89.50%	1,936.50	89.65	151.28	161.37	313.25	195.02	144.32	151.19	159.79	211.39	213.78	145.46	-
o.w/- Social Security Benefits	1,004.36	99.28%	997.11	75.40	79.58	88.30	101.86	91.49	93.45	91.28	93.81	97.32	92.41	92.23	-
-Social Assistance to citizens	948.58	87.53%	830.30	12.24	65.84	58.64	202.23	91.69	44.19	49.86	55.64	105.87	102.98	41.14	-
-Social Assistance to social and cultural entities	144.90	64.03%	92.78	1.98	5.46	13.82	8.99	6.07	6.58	7.17	10.27	5.61	18.07	8.74	-

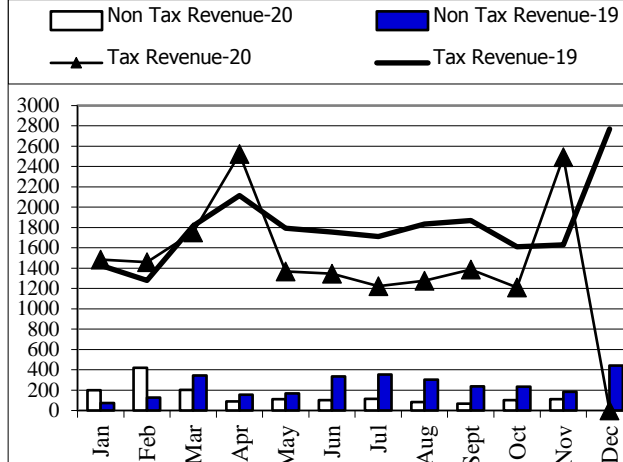
TOFE: BUDGET IMPLEMENTATION FOR 2020															
	2020 C.B.L.	Total Act /BL2020	Total Act	Jan-20	Feb-20	Mar-20	Apr-20	May-20	Jun-20	Jul-20	Aug-20	Sep-20	Oct-20	Nov-20	Dec-20
-Other social benefits	13.66	100.00%	13.66	-	-	-	-	5.62	-	2.81	-	2.42	-	2.81	-
-Grants	1,892.45	118.62%	2,244.83	62.50	474.48	348.98	335.37	111.45	375.13	48.68	43.61	86.79	176.44	181.40	-
-Other non wage	1,368.84	37.34%	511.12	2.96	148.12	53.84	15.79	14.14	111.89	11.33	4.21	112.31	19.45	17.08	-
o.w/ -Unanticipated Expense(Reserve)	838.88	0.00%	-	-	-	-	-	-	-	-	-	-	-	-	-
2. CAPITAL	11,953.05	63.27%	7,563.25	250.23	382.18	877.20	687.96	403.33	1,216.84	903.07	402.26	451.81	1,198.74	789.65	-
Domestic Financing	5,899.86	69.71%	4,113.02	30.82	164.95	332.42	198.91	102.20	811.83	531.15	138.85	234.20	971.97	595.71	-
Tangible fixed assets and land	5,600.56	68.31%	3,825.49	30.82	164.95	332.42	198.91	102.20	795.37	530.93	138.85	234.20	971.97	324.87	-
Investments	32.80	66.48%	21.81	-	-	-	-	-	16.46	0.22	-	-	-	5.13	-
Other financial assets	266.50	99.71%	265.72	-	-	-	-	-	-	-	-	-	-	265.72	-
External assistance (Project)	6,053.19	57.00%	3,450.23	219.41	217.23	544.78	489.05	301.13	405.00	371.91	263.41	217.61	226.76	193.94	-
CURRENT DEF/SURPL.comt (I.I-II.I)	5,862.44	76.53%	4,486.27	817.66	228.74	430.34	1,111.95	351.28	(130.24)	71.59	194.23	37.36	(19)	1,392.24	-
OVERALL DEF/SURPL.comt (I-II)	(5,897.27)	...	(2,918.99)	567.43	(150.07)	(430.03)	467.66	(49.36)	(1,342.60)	(808.31)	(202.33)	(403.47)	(1,179.82)	611.91	-
CURRENT DEF/SURPL.cash(comt.+3)	5,862.44	76.53%	4,486.27	817.66	228.74	430.34	1,111.95	351.28	(130.24)	71.59	194.23	37.36	(18.87)	1,392.24	-
OVERALL DEF/SURPL.cash (com.+3)	(5,897.27)	...	(2,918.99)	567.43	(150.07)	(430.03)	467.66	(49.36)	(1,342.60)	(808.31)	(202.33)	(403.47)	(1,179.82)	611.91	-
III. FINANCING	5,897.27	49.50%	2,918.99	(567.43)	150.07	430.03	(467.66)	49.36	1,342.60	808.31	202.33	403.47	1,179.82	(611.91)	-
I. FOREIGN FINANCING	5,197.27	73.19%	3,803.89	202.72	16.41	434.26	537.94	256.34	405.10	253.88	1,092.89	68.90	367.41	168.05	-
a. Budget support	250.00	529.95%	1,324.87	-	-	-	97.86	-	12.54	0.24	1,034.73	-	179.50	-	-
-Grants-budget support	162.00	130.63%	211.62	-	-	-	9.35	-	12.54	-	10.23	-	179.50	-	-
Capital Support	162.00	130.63%	211.62	-	-	-	9.35	-	12.54	-	10.23	-	179.50	-	-
Bilateral grant for investment expense	162.00	130.63%	211.62	-	-	-	9.35	-	12.54	-	10.23	-	179.50	-	-
-Debt and related liabilities-budget support	88.00	1265.07%	1,113.26	-	-	-	88.52	-	-	0.24	1,024.50	-	-	-	-
Foreign borrowing	88.00	1265.07%	1,113.26	-	-	-	88.52	-	-	0.24	1,024.50	-	-	-	-
Foreign borrowings from multilateral agencies	88.00	1265.07%	1,113.26	-	-	-	88.52	-	-	0.24	1,024.50	-	-	-	-
b. Project aid	6,053.19	57.15%	3,459.30	219.24	215.49	578.36	487.80	288.32	400.81	360.60	262.66	209.90	241.31	194.82	-
Spent	6,053.19	57.00%	3,450.23	219.41	217.23	544.78	489.05	301.13	405.00	371.91	263.41	217.61	226.76	193.94	-
-Grants	958.28	91.67%	878.42	79.86	79.86	79.86	79.86	79.86	79.86	79.86	79.86	79.86	79.86	79.86	-
Bilateral grant for investment expense	958.28	91.67%	878.42	79.86	79.86	79.86	79.86	79.86	79.86	79.86	79.86	79.86	79.86	79.86	-
-Debt and related liabilities	5,094.91	50.48%	2,571.81	139.56	137.37	464.92	409.19	221.27	325.15	292.06	183.55	137.75	146.91	114.08	-
Foreign borrowing	5,094.91	50.48%	2,571.81	139.56	137.37	464.92	409.19	221.27	325.15	292.06	183.55	137.75	146.91	114.08	-
Foreign borrowings from multilateral agencies	2,037.97	44.62%	909.42	37.09	77.03	103.81	124.83	95.70	110.15	108.42	39.02	70.06	49.69	93.61	-
Foreign borrowings from bilateral agencies	3,056.95	54.38%	1,662.39	102.47	60.34	361.11	284.36	125.57	215.00	183.64	144.53	67.69	97.22	20.47	-
Pending		...	9.07	(0.18)	(1.74)	33.58	(1.24)	(12.81)	(4.20)	(11.31)	(0.75)	(7.71)	14.54	0.88	-

TOFE: BUDGET IMPLEMENTATION FOR 2020															
	2020 C.B.L.	Total Act /BL2020	Total Act	Jan-20	Feb-20	Mar-20	Apr-20	May-20	Jun-20	Jul-20	Aug-20	Sep-20	Oct-20	Nov-20	Dec-20
c. Amortization on external debts	(1,105.92)	...	(980.29)	(16.52)	(199.08)	(144.10)	(47.73)	(31.98)	(8.24)	(106.97)	(204.50)	(141.01)	(53.39)	(26.76)	-
2. DOMESTIC FINANCING	700.00	12.64%	88.47	24.56	(21.71)	(4.93)	15.97	3.53	(16.18)	83.47	16.01	13.59	(17.46)	(8.37)	-
a. Net bank financing (monetary suvey)	700.00	12.64%	88.47	24.56	(21.71)	(4.93)	15.97	3.53	(16.18)	83.47	16.01	13.59	(17.46)	(8.37)	-
- Government's deposits	700.00	12.64%	88.47	24.56	(21.71)	(4.93)	15.97	3.53	(16.18)	83.47	16.01	13.59	(17.46)	(8.37)	-
3. OUTSTANDING OPERATIONS		...	(973.37)	(794.71)	155.37	0.70	(1,021.57)	(210.51)	953.69	470.96	(906.57)	320.98	829.86	(771.59)	-
Error	0.00	-35.52%	(0.00)	-	(0.00)	(0.00)	-	(0.00)	0.00	0.00	(0.00)	(0.00)	0.00	(0.00)	-
Exchange rate (R/\$)		...		4,050	4,070	4,070	4,099	4,116	4,093	4,099	4,105	4,100	4,060	4,048	-
Provincial revenue	2,278.69	104.22%	2,374.86	125.64	352.41	303.11	150.41	106.49	142.51	146.90	138.57	161.73	208.68	538.39	-
o.w. provincial tax revenue	2,086.31	83.31%	1,738.09	120.47	147.35	157.79	129.28	99.87	129.73	126.93	129.42	145.81	177.09	374.34	-
o.w. prov. non-tax revenue	145.36	58.81%	85.48	5.17	2.27	3.69	2.97	2.29	4.91	19.81	5.52	9.72	15.78	13.35	-
o.w. prov. Transfer from central	47.02	1172.36%	551.29	-	202.79	141.63	18.17	4.33	7.88	0.16	3.63	6.20	15.81	150.70	-
Provincial expenditure	2,278.69	42.66%	972.16	0.55	86.71	170.34	143.69	50.31	66.82	90.78	113.49	38.36	67.08	144.03	-
o.w. wage and salary	160.60	47.81%	76.78	0.54	8.29	8.04	9.38	6.90	7.71	7.27	5.88	6.17	6.79	9.80	-
o.w. non-wage	1,655.74	37.34%	618.23	0.01	64.06	121.70	46.47	43.21	50.94	51.21	67.57	26.59	60.29	86.17	-
o.w. investment	462.36	59.94%	277.15	-	14.36	40.59	87.85	0.20	8.17	32.30	40.04	5.60	-	48.06	-
Provincial Balance	-	...	1,402.70	125.09	265.71	132.78	6.72	56.17	75.70	56.12	25.08	123.37	141.60	394.36	-
Contribution from casino and Lottery	201.23	79.11%	159.19	45.88	9.94	66.40	5.16	12.64	0.22	0.25	3.66	3.68	3.70	7.66	-

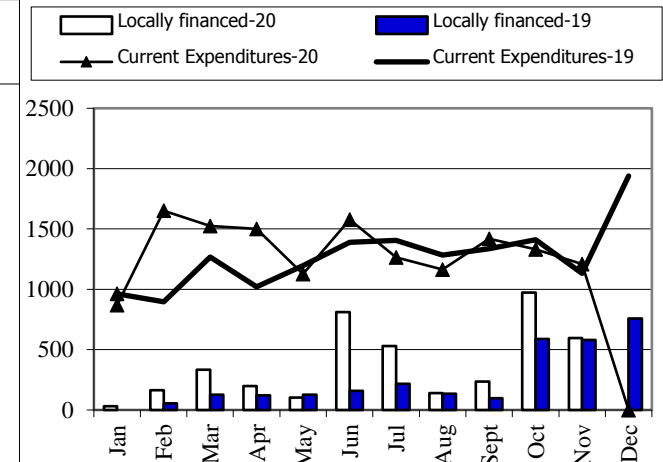
Revenue and Trade Relate Tax 2019-2020



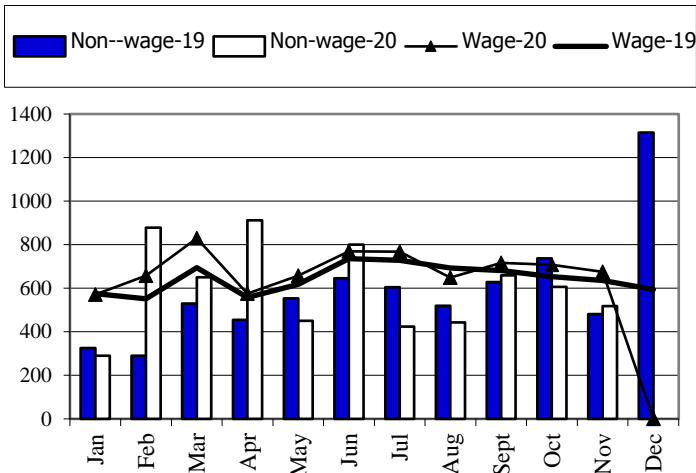
Tax and Non Tax Revenue 2019-2020



Current Expenditures and Domestic Financing 2019-2020

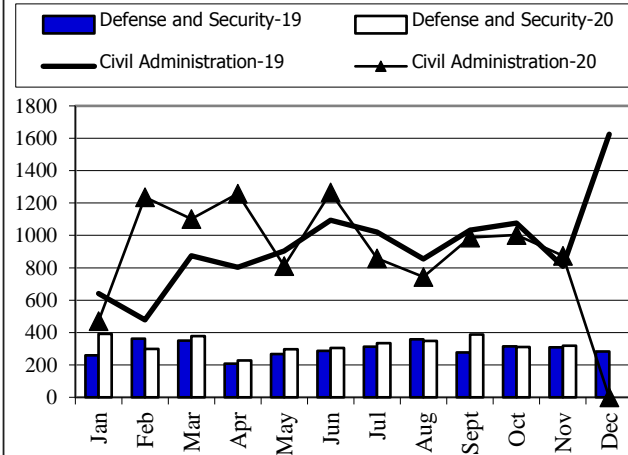


Wage and Non-wage 2019-2020

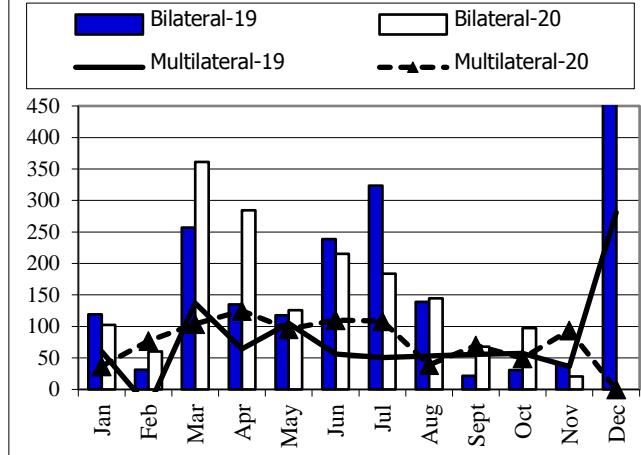


Source: MEF

Defense and Security and Civil Administrative Expenditure 2019-2020



Multilateral and Bilateral Disbursements 2019-2020



CURRENT BUDGET EXPENDITURE BY MINISTRY 2020

	2020 C.B.L.	Total Act /BL2020	Total Act	Jan-20	Feb-20	Mar-20	Apr-20	May-20	Jun-20	Jul-20	Aug-20	Sep-20	Oct-20	Nov-20	Dec-20
Total Current Expenditures	18,036,884	81.15%	14,636,996	868,187	1,650,846	1,523,701	1,500,467	1,127,831	1,577,609	1,264,604	1,164,124	1,417,940	1,331,841	1,209,846	
I. General Administration	2,605,991	90.56%	2,359,923	123,462	288,172	252,646	398,031	131,564	284,393	158,037	123,638	283,797	185,193	130,990	
01. Royal Palace	102,815	67.66%	69,567	4,570	7,640	9,476	4,813	8,120	7,010	7,515	4,433	4,534	6,312	5,144	
02. National Assembly	193,937	82.40%	159,802	23,755	23,975	25,650	22,935	-	25,323	6,174	-	-	31,992	-	
03. Senate	87,309	85.15%	74,347	22,665	4	11,986	7,622	9	12,875	4,523	599	12,698	1,246	147	
04. Counstitutional Council	13,700	93.86%	12,859	3,117	1,539	-	2,494	23	392	2,611	18	9	2,656	-	
05.1 Council of Minister	427,020	82.66%	352,977	15,426	22,969	45,966	47,772	26,226	37,992	32,105	12,916	58,766	30,405	22,436	
05.4 CDC	16,200	56.68%	9,183	96	94	153	101	1,355	1,898	1,666	1,995	490	420	915	
07.2 Interior-Administration	255,261	94.67%	241,651	15,103	24,787	24,641	28,023	22,978	21,048	21,914	22,630	21,191	22,646	16,688	
08. Relations Assembly and Inspections	44,229	73.03%	32,299	1,355	2,079	4,064	4,438	1,546	3,512	3,122	2,640	3,349	2,317	3,876	
09. Foreign Affairs and Int'l Cooperation	154,521	73.46%	113,503	10,447	20,384	13,067	10,805	1,895	13,226	17,339	14,255	3,950	3,316	4,820	
10. Economy and Finance	886,019	113.32%	1,004,070	11,929	164,524	91,302	252,226	35,301	134,113	36,114	41,441	149,720	48,674	38,726	
14. Planning	97,271	77.15%	75,041	3,781	6,366	8,424	4,498	6,373	6,733	6,683	6,518	5,389	13,226	7,051	
28. Urbanization and Construction	137,259	64.55%	88,600	3,584	6,445	8,238	4,474	9,663	7,580	7,967	6,981	14,317	11,035	8,316	
30. National Election Committee	64,622	60.22%	38,918.03	1,106	1,126	1,893	1,977	9,891	2,977	1,942	1,161	1,490	3,869	11,486	
31. National Audit Authority	14,986	69.16%	10,365	666	666	666	687	1,355	1,147	1,642	867	323	677	1,668	
33.1 Anti-corruption Authority	49,604	68.58%	34,016	4,217	2,864	2,443	2,278	2,130	4,772	2,141	3,123	2,866	2,215	4,966	
34. Public Function	61,238	69.77%	42,724	1,644	2,718	4,678	2,889	4,718	3,794	4,580	4,060	4,705	4,187	4,752	
II. Defense and Security	4,405,117	83.95%	3,698,236	396,581	307,810	388,977	236,435	306,270	314,456	343,570	358,030	393,257	323,623	329,228	
06. National Defense	2,536,728	89.61%	2,273,213	173,376	200,218	181,031	217,328	194,537	198,934	210,920	244,830	259,096	203,909	189,034	
07.1 Interior - Public Security	1,703,340	77.80%	1,325,138	218,011	99,366	197,233	11,079	103,013	105,005	122,992	103,520	128,670	107,099	129,149	
26. Justice	165,049	60.52%	99,885	5,194	8,226	10,712	8,028	8,719	10,517	9,658	9,680	5,492	12,614	11,045	
III. Social Administrative	6,747,860	83.77%	5,652,831	252,279	436,378	460,276	722,167	583,716	558,499	579,936	459,970	565,428	549,922	484,258	
11. Information	90,170	76.46%	68,943	2,980	4,892	10,088	6,023	10,429	7,616	6,769	5,345	5,101	4,772	4,932	
12. Public Health	1,636,498	86.56%	1,416,537	34,464	95,714	72,727	318,253	192,377	95,120	98,704	99,030	173,485	147,046	89,619	
16. Education, Youth and Sport	3,207,220	79.46%	2,548,593	116,131	225,558	225,976	242,760	242,521	272,779	292,186	215,203	241,109	225,784	248,587	
18. Culture and Fine-Arts	185,151	80.27%	148,614	3,649	5,569	7,466	8,056	8,546	31,260	22,800	7,052	20,085	21,679	12,453	
19. Environment	95,716	68.19%	65,266	2,406	6,083	7,035	5,873	4,321	6,264	9,171	3,649	6,965	5,774	7,725	
21. Social Affair & Veteran	1,137,061	97.41%	1,107,661	78,673	84,693	108,954	114,401	97,648	100,813	103,445	108,984	104,307	104,955	100,787	
23. Public Worship and Religion	73,427	78.41%	57,574	2,037	3,986	6,896	4,596	5,544	5,633	6,226	4,588	5,864	6,504	5,699	
24. Woman Affairs	55,262	70.96%	39,215	1,060	3,124	4,621	4,915	3,331	3,616	5,270	3,015	3,107	3,781	3,375	
32. Labour and Vocational Training	267,355	74.97%	200,428	10,879	6,760	16,513	17,292	19,000	35,398	35,364	13,104	5,407	29,629	11,081	
IV. Economy Administrative	1,556,835	66.99%	1,042,920	30,518	65,222	111,100	58,569	83,148	104,090	109,936	143,866	126,833	112,739	96,900	
05.3 Civil Aviation Secretariate	60,164	57.40%	34,532	2,493	69	2,577	238	4,747	1,637	6,695	5,410	6,611	1,621	2,433	
13. Industry, Mines and Energy	74,247	41.49%	30,806	1,255	2,130	2,617	2,872	3,483	3,318	3,647	2,685	2,995	2,857	2,947	
15. Commerce	126,476	68.17%	86,217	2,727	3,735	12,678	6,418	6,793	17,767	5,678	7,104	3,700	17,858	1,760	
17. Agriculture, Forestry and Fishery	283,076	82.69%	234,073	7,723	22,199	35,087	11,424	22,781	23,858	28,341	18,153	21,802	23,484	19,220	
20. Rural Development	196,723	39.22%	77,147	2,071	3,853	11,033	4,441	4,858	10,793	9,927	8,129	6,964	5,876	9,202	
22. Posts and Telecommunications	79,595	81.44%	64,825	1,797	2,342	5,058	3,485	2,931	4,584	7,782	20,651	5,625	3,161	7,409	
25. Public Works and Transport	406,902	65.85%	267,961	4,769	20,263	22,867	9,373	19,310	23,438	20,845	56,700	26,795	34,631	28,971	
27. Tourism	102,966	70.21%	72,291	2,746	2,749	6,287	10,388	7,993	4,980	10,572	8,968	4,302	5,303	8,003	
29. Water Resources and Meteorology	164,042	81.18%	133,164	3,452	5,506	7,511	7,092	6,401	8,810	10,454	13,112	43,070	14,677	13,079	
35. Industry and Handicrafts	62,644	66.89%	41,904	1,485	2,376	5,384	2,838	3,851	4,905	5,996	2,954	4,969	3,270	3,875	
V. Miscellaneous	2,721,081	69.20%	1,883,086	65,347	553,266	310,703	85,265	23,132	316,171	73,125	78,619	48,624	160,365	168,470	
99.Unexpect Expenditure	2,721,081	69.20%	1,883,086	65,347	553,266	310,703	85,265	23,132	316,171	73,125	78,619	48,624	160,365	168,470	

NOTE



TOFE report was issued based on temporary data as following:

1. Data on Revenue at National level was received on December 22, 2020
2. Data on Expenditure at National Level was received on December 21, 2020
3. Data on Loan and Grant of multilateral and bilateral was retrieved on December 21, 2020
4. Financial Operation Data (Credit Bank) was received on December 04, 2020

TOFE report will be updated in the next released.

