

Inflation Report

September 2020

Domestic Inflation

According to official data from the National Institute of Statistics (NIS), in September, Consumer Price Index (CPI) in Phnom Penh increased by 0.4% compared to the previous month and increased by 2.9% compared to the same period last year.

Overall, the Consumer Price Index rate highly increased around 3% compared to the same month last year, mainly driven by the increase of Food and Nonalcoholic beverages of 4.6% of which the increase of food price alone contributed by 4.7% (pork increased by 9.6 %, freshwater and sea fish 6.5%, fruit 3.0% and vegetables 1.2%). However, the high increase of food price has been offsetted by the decrease of transport price index by 4.5% , of which gasoline and diesel declined by 15.5% and 23.7, respectively.

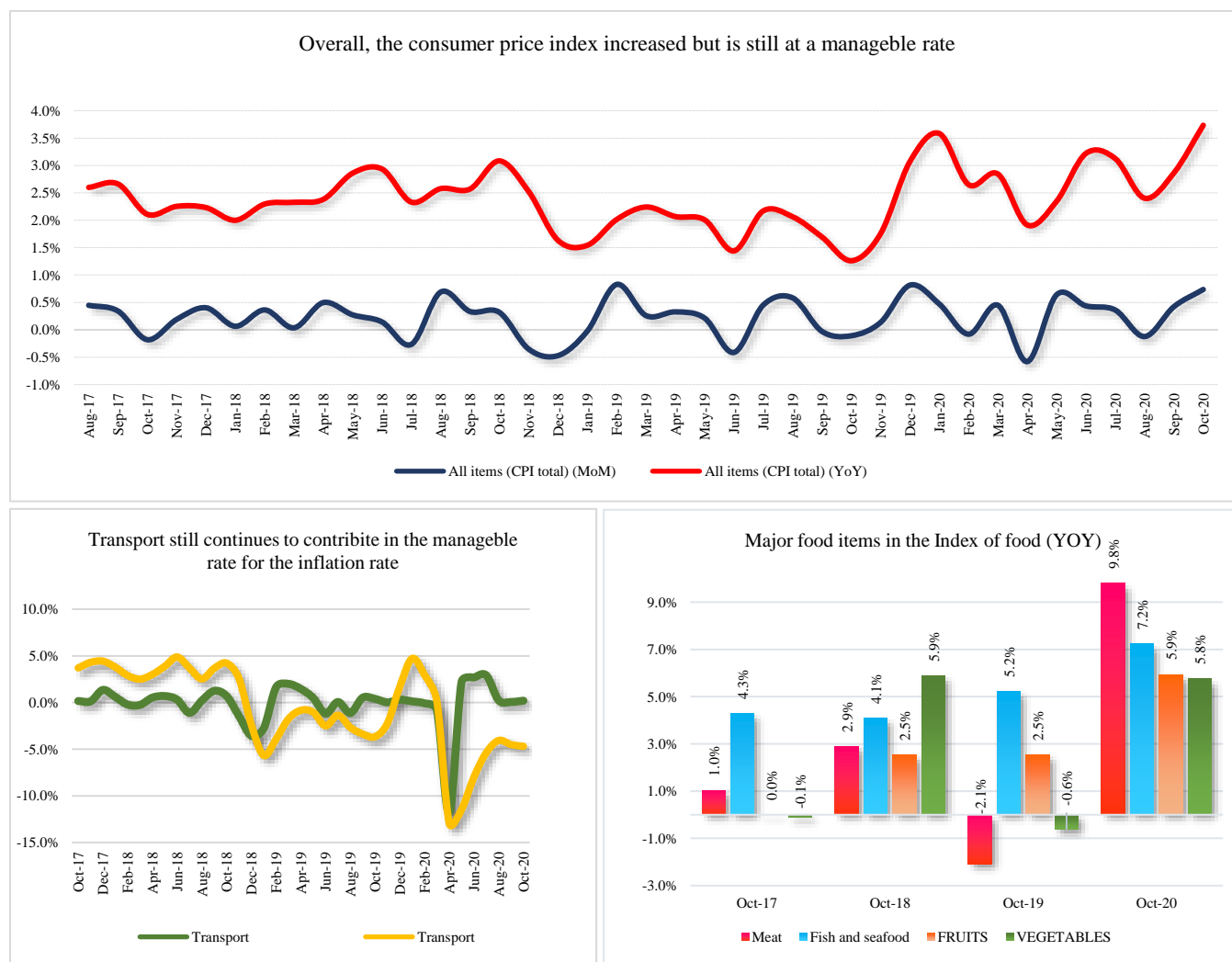


Table 1: Changes of price index of 12 product groups in September 2020

	Compared with last month	Compared with last year
Item of goods & service	0.4	2.9
1. Foods and Nonalcoholic beverages	0.8	4.6
2. Alcoholic beverages, and Tobacco	0.1	1.4
3. Clothing and Footwear	0.4	3.1
4. Housing, Water, Electricity, Gas and Other Fuels	0.2	1.2
5. Furnishings, Household Maintenance	0.2	0.3
6. Health	0.2	0.3
7. Transport	0.1	-4.5
8. Communication	-0.3	-1.1
9. Recreation and Culture	0.5	0.8
10. Education	0.0	3.0
11. Restaurants	-0.6	3.0
12. Miscellaneous Goods and Services	0.1	4.3

Table 2: Price level changes of some food items (%)

Food items	Compared with last month					2020								
	Aug	Sep	Oct	Nov	Dec	Jan	Feb	Mar	Apr	May	Jun	Jul	Aug	Sep
Rice	1.1	0.2	-0.3	0.1	0.4	0.2	0.9	0.2	-0.1	0.3	0.3	0.2	-0.2	0.5
Beef	0.9	0.2	0.0	0.4	0.0	0.4	-0.1	0.4	0.1	1.4	0.1	0.4	0.3	0.1
Chicken	1.2	0.2	0.1	0.2	0.6	0.4	-0.2	0.0	0.0	0.0	0.3	-0.1	-0.2	0.0
Duck	0.5	0.1	-0.1	0.0	0.8	0.2	0.0	-0.2	0.4	0.0	-0.2	3.2	-0.4	0.2
Pork	1.3	-2.6	1.2	0.6	1.7	4.2	0.2	0.6	1.0	1.4	0.8	1.2	0.2	1.0
Freshwater and sea fish	1.4	0.5	0.1	-0.5	1.5	0.2	-0.2	1.5	1.4	0.9	0.3	0.3	0.1	0.8
Fresh fish	1.4	0.6	0.1	-0.5	1.4	0.1	-0.3	1.6	1.5	1.1	0.4	0.2	0.3	0.7
Fruit	1.0	0.2	-1.3	1.2	0.3	-0.6	-0.5	2.2	1.6	0.1	-0.2	-1.0	-0.7	1.9
Fresh fruit	1.1	0.2	-1.2	1.2	0.4	-0.8	-0.6	2.5	1.8	0.1	-0.3	-1.2	-0.8	2.3
Vegetable	0.8	0.3	-1.5	0.9	1.2	0.3	-0.7	1.1	-0.1	0.1	1.3	-1.1	-1.0	0.7
Leaf vegetable	1.3	0.5	-1.1	1.6	0.2	0.4	-0.9	1.4	-1.2	-0.2	1.0	-2.0	-0.9	0.8
Fruit vegetable	0.3	0.0	-2.4	0.3	2.7	-0.2	-1.1	0.6	1.7	0.6	1.2	-0.6	-1.0	0.5

Sources:

(1) Cambodia: National Institute of Statistics (NIS)

Food items	Compared with last year					2020								
	Aug	Sep	Oct	Nov	Dec	Jan	Feb	Mar	Apr	May	Jun	Jul	Aug	Sep
Rice	3.7	3.9	3.3	3.7	3.8	3.8	4.1	4.3	3.7	3.2	4.0	3.5	2.1	2.4
Beef	2.4	2.4	2.5	2.9	2.7	2.7	2.5	2.8	2.8	4.4	4.4	4.3	3.7	3.7
Chicken	3.2	3.4	3.3	3.1	3.3	3.2	3.0	2.5	2.1	2.1	3.7	2.7	1.3	1.1
Duck	5.5	4.6	3.6	3.3	4.4	4.0	3.3	3.1	3.1	2.2	3.5	4.6	3.7	3.8
Pork	-4.5	-7.4	-5.8	-3.4	-1.4	2.0	1.5	2.8	1.7	4.0	5.4	12.2	11.0	15.1
Freshwater and sea fish	5.2	5.3	5.2	5.4	6.9	7.0	6.5	8.1	8.9	9.8	10.6	7.6	6.2	6.5
Fresh fish	5.2	5.0	5.2	5.8	7.1	7.3	7.0	8.8	9.6	10.6	11.4	7.9	6.8	6.9
Fruit	4.0	4.7	2.5	3.7	4.3	4.4	2.6	4.6	6.6	5.5	5.2	3.0	1.3	3.0
Fresh fruit	4.5	5.4	3.2	4.4	5.1	5.0	3.0	5.2	7.5	6.2	5.9	3.2	1.3	3.5
Vegetable	2.7	1.4	-0.6	1.2	3.2	4.5	2.3	4.0	2.9	1.6	5.2	2.6	0.7	1.2
Leaf vegetable	1.9	0.6	-2.0	0.9	2.1	3.6	1.3	3.1	0.9	0.4	3.5	0.8	-1.3	-1.1
Fruit vegetable	5.8	2.9	0.9	1.8	5.8	7.3	3.8	5.6	4.9	2.4	6.4	3.1	1.7	2.2

Sources:

(1) Cambodia: National Institute of Statistics (NIS)

Annual Inflation of Neighboring Countries:

Table 3: Year on Year inflation rate (%)

Country	2019					2020								
	Aug	Sep	Oct	Nov	Dec	Jan	Feb	Mar	Apr	May	Jun	Jul	Aug	Sep
Cambodia	2.1	1.7	1.3	1.8	1.8	3.6	2.6	2.8	1.9	2.3	3.2	3.1	2.4	2.9
Vietnam	2.3	2.0	2.2	3.5	3.5	6.4	5.4	5.9	2.9	2.4	3.1	3.2	3.2	3.0
Thailand	0.5	0.3	0.1	0.2	0.2	1.1	0.7	-0.5	-3.0	-3.4	-1.6	-1.0	-0.5	-0.7
Malaysia	1.5	1.1	1.1	0.9	0.9	1.6	1.3	-0.2	-2.9	-2.9	-1.9	-1.3	-1.4	-1.4
Indonesia	3.4	3.4	3.1	3.0	3.0	2.7	3.0	3.0	2.7	2.2	2.0	1.5	1.3	1.4
Philippine	0.9	0.9	0.8	1.3	1.3	2.9	2.5	2.5	2.2	2.1	2.5	2.7	2.4	2.3
China	2.8	3.0	3.8	4.5	4.5	5.4	5.2	4.3	3.3	2.4	2.5	2.7	2.4	1.7
South Korea	0.0	-0.4	0.0	0.2	0.2	1.5	1.1	1.0	0.1	-0.3	0.0	0.3	0.7	1.0
Japan	0.3	0.2	0.2	0.5	0.5	0.7	0.4	0.4	0.1	0.1	0.1	0.3	0.2	0.0

Sources:

(1) Cambodia: National Institute of Statistics (NIS)

(2) Other countries: <http://www.tradingeconomics.com>;