

State Budget Implementation

October, 2020

	Page
1. Brief	1
2. TOFE	2
3. Ministry Spending	7

1. Brief Note on Monthly Budget Implementation of October 2020 (TOFE_GFMS1986)

According to the Budget Law 2020, Cambodia's economic growth during the year is projected at 6.5%. However, based on the mid-year assessment, the growth is projected to grow negatively at an unprecedented rate of 1.9% due to the rapid spread of the COVID-19 disease. In this context, the performance of the state budget could be affected both in terms of revenue and expenditure.

As of October 2020, the total domestic revenue of the budgetary central government has been achieved around 69.17% of the Budget Law 2020 decreased by 22.80% compared to the same period of implementation in the last three years. In October 2020, the budgetary central government achieved the total domestic revenue of KHR 1,346 billion, signifying the significant decrease of 27.84% compared to the same month in 2019. As of October 2020, the total domestic revenue has been achieved by KHR 16,665.47 billion, marking the decrease by 15.34% compared to the same period last year, in which tax revenue and non-tax revenue, decreased by 12.68% and 36.18%, respectively, while domestic capital revenue increased slightly at 2.78%. The decline was due to declining economic activity amid the COVID-19 pandemic and the implementation of the government intervention measures such as the exemption of all types of monthly taxes for tourism and the minimum tax for aviation industry.

The execution of total expenditures of the budgetary central government has been remarkably fast, reaching 67.36% of the Budget Law 2020, reflected the timely necessary interventions of the government during COVID-19 pandemic. In October 2020, the total expenditures were KHR 2,531 billion, an increase of 4.28% compared to October 2019. As of October 2020, the accumulated total expenditure has reached KHR 20,200 billion riels, indicating an increase of 13.81% compared to the same period in 2019, of which current expenditures were KHR 13,427 billion and capital expenditures were KHR 6,773 billion. The increase was due to the implementation of proactive targeted expenditures to address the impact of the COVID-19 pandemic on sectors such as health, social assistance, and the economy.

Amid the COVID-19 pandemic, the government has managed and utilized the financing effectively, which is able to sustain the above implementations in a timely manner. As of October 2020, the total financing of the budgetary central government was KHR 3,535 billion or equivalent to 59.95% of the Budget Law, of which 69.96% was foreign financing and 13.84% was domestic financing.

As a result of the implementation of the state budget as of October 2020, there is a budget deficit of KHR 3,535 billion, less than the Budget Law of 40.05%, which is supported by domestic financing on government's deposits and foreign financing, both in the form of grants and loans. Despite this, the Government of Cambodia has maintained its stable financial management.

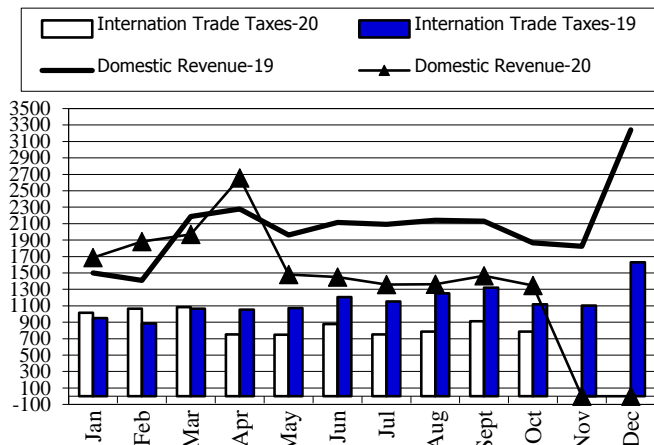
TOFE: BUDGET IMPLEMENTATION FOR 2020															
	2020 C.B.L.	Total Act /BL2020	Total Act	Jan-20	Feb-20	Mar-20	Apr-20	May-20	Jun-20	Jul-20	Aug-20	Sep-20	Oct-20	Nov-20	Dec-20
I. DOMESTIC REVENUE	24,092.67	69.17%	16,665.47	1,685.85	1,882.95	1,970.87	2,656.08	1,481.76	1,451.84	1,359.36	1,364.10	1,466.43	1,346.22		-
I. CURRENT REVENUE	23,899.32	69.11%	16,516.81	1,685.85	1,879.59	1,954.04	2,612.42	1,479.07	1,447.37	1,336.19	1,358.40	1,455.45	1,308.43		-
a. TAX REVENUE	21,091.15	71.27%	15,030.66	1,485.18	1,459.89	1,752.02	2,523.57	1,367.27	1,345.86	1,222.16	1,276.08	1,388.53	1,210.10		-
Domestic tax revenue	18,321.75	72.50%	13,282.90	1,273.82	1,269.79	1,532.91	2,384.20	1,215.17	1,188.43	1,064.29	1,101.87	1,227.65	1,024.77		-
Direct Tax (income tax, profits tax)	5,080.00	88.63%	4,502.17	259.12	203.49	447.39	1,634.11	466.22	309.08	312.44	316.54	315.88	237.91		-
Indirect Tax	13,241.75	66.31%	8,780.74	1,014.69	1,066.30	1,085.52	750.09	748.95	879.35	751.85	785.33	911.77	786.87		-
o.w/ - Excise Tax on specific goods	1,100.00	58.08%	638.87	60.14	95.18	58.12	60.08	70.03	70.04	35.06	65.03	60.07	65.11		-
o.w/ -Special Excise Tax(petroleum,others)	4,548.95	64.00%	2,911.17	434.81	364.04	370.95	232.88	249.36	248.48	256.01	245.78	250.35	258.51		-
o.w/ - Excise Tax on specific services	85.00	87.46%	74.34	3.70	6.72	9.43	7.16	8.06	7.08	14.14	5.09	5.74	7.22		-
Other tax revenues	135.00	91.96%	124.14	6.61	8.36	20.27	12.79	11.06	14.70	11.38	11.83	12.55	14.58		-
Taxes on international trade	2,769.40	63.11%	1,747.76	211.37	190.10	219.11	139.37	152.10	157.42	157.87	174.21	160.88	185.32		-
Taxes and duties on imports	2,719.80	60.00%	1,731.98	209.05	187.80	217.27	138.99	151.52	155.86	156.34	172.71	158.77	183.67		-
o.w/ -Customs duties on imports	1,970.40	60.00%	1,182.33	165.35	134.06	140.32	99.55	102.77	103.87	105.85	100.30	115.36	114.90		-
-Customs duties on petroleum products	310.00	75.92%	235.35	19.58	21.39	28.14	19.44	20.98	23.04	21.76	32.64	19.12	29.27		-
-Additional tax on oil product - Road maintenance	342.00	78.94%	269.96	18.55	21.60	42.52	17.14	25.83	25.37	25.34	37.49	19.21	36.91		-
-Import tax for materials used for medical production	12.90	85.27%	11.00	-	5.15	1.95	-	-	1.38	-	-	2.52	-		-
-others	84.50	39.46%	33.34	5.56	5.61	4.34	2.86	1.94	2.20	3.40	2.28	2.56	2.59		-
Taxes and duties on exports	49.60	31.81%	15.78	2.31	2.30	1.85	0.38	0.58	1.57	1.53	1.50	2.10	1.66		-
o.w/-Tax on timber exports	10.00	53.97%	5.40	0.20	0.52	0.65	0.23	0.36	0.64	0.72	0.75	0.78	0.55		-
-Tax on rubber exports	27.00	19.69%	5.31	1.90	1.74	0.83	0.00	0.03	0.08	0.10	0.10	0.14	0.39		-
-Tax on export of agricultural products	12.10	40.32%	4.88	0.18	0.02	0.34	0.15	0.19	0.83	0.63	0.64	1.18	0.71		-
b. NON TAX REVENUE	2,808.18	52.92%	1,486.15	200.67	419.70	202.02	88.84	111.80	101.51	114.04	82.33	66.92	98.33		-
State Property Revenue	220.30	170.58%	375.80	13.89	270.47	5.25	9.64	18.50	8.66	16.65	10.97	3.46	18.31		-
Concession and rental land	200.65	44.91%	90.11	7.00782	7.36	5.25	9.32	16.42	8.66	13.90	5.42	3.46	13.31		-
Public Enterprises Income	19.65	1453.88%	285.69	6.88	263.11	-	0.32	2.08	-	2.75	5.55	-	5.00		-
Income from Sales, Rental of Properties and Services	2,275.00	41.89%	953.10	181.66	133.96	180.77	62.18	87.63	67.99	93.62	47.34	49.77	48.18		-
Income of administrative public enterprises -operational services (for profit)	962.66	31.48%	303.00	61.13	53.84	53.20	6.04	28.90	23.75	43.74	11.11	9.60	11.69		-
Sales of Property of Public Administration	117.83	64.25%	75.70	5.72	8.45	8.28	10.93	5.95	7.32	9.79	6.72	3.92	8.62		-
Administrative fees	863.73	37.03%	319.86	47.25	54.33	43.34	34.35	33.00	21.30	28.17	20.04	27.70	10.39		-
Sales of Services	36.79	79.21%	29.14	1.71	1.69	1.90	1.67	3.66	4.55	1.94	1.15	1.03	9.84		-
Other transaction fees	258.77	77.95%	201.72	58.41	13.35	71.64	7.56	15.28	10.21	6.63	7.38	5.45	5.80		-

TOFE: BUDGET IMPLEMENTATION FOR 2020															
	2020 C.B.L.	Total Act /BL2020	Total Act	Jan-20	Feb-20	Mar-20	Apr-20	May-20	Jun-20	Jul-20	Aug-20	Sep-20	Oct-20	Nov-20	Dec-20
Other Rental of immovable properties	35.22	67.22%	23.67	7.45	2.29	2.42	1.63	0.85	0.85	3.34	0.94	2.06	1.84		-
Other non tax	312.88	50.26%	157.25	5.11	15.27	16.00	17.02	5.68	24.86	3.77	24.02	13.70	31.83		-
o.w/ Other exceptional revenues	-	...	21.72	3.79	0.14	-	1.00	1.22	10.72	0.36	2.53	0.85	1.11		-
2. CAPITAL REVENUE	193.34	76.89%	148.66	-	3.36	16.83	43.67	2.69	4.48	23.16	5.70	10.98	37.79		-
Other financial assets	193.34	76.89%	148.66	-	3.36	16.83	43.67	2.69	4.48	23.16	5.70	10.98	37.79		-
II. BUDGET EXPENDITURE	29,989.93	67.36%	20,200.92	1,118.41	2,033.02	2,400.90	2,188.43	1,531.16	2,794.44	2,167.61	1,566.45	1,869.16	2,531.33		-
1. CURRENT EXPENDITURE	18,036.88	74.44%	13,427.15	868.19	1,650.85	1,523.70	1,500.47	1,127.83	1,577.61	1,264.60	1,164.12	1,417.94	1,331.84		-
a. Wages	8,539.75	80.81%	6,901.40	571.05	657.56	829.46	575.76	658.23	768.63	768.28	648.42	716.10	707.90		-
Personnel charges-civil administrative	4,983.15	80.34%	4,003.25	301.73	383.59	453.20	380.61	369.87	477.31	471.25	354.56	386.93	424.20		-
o.w/ Diplomatic salary	5,106.00	0.08%	4.22	1.19	-	0.72	-	0.18	1.02	0.04	1.03	0.04	-		-
Personnel charges-national defence and security	3,556.60	81.49%	2,898.15	269.32	273.98	376.27	195.15	288.36	291.32	297.04	293.87	329.17	283.70		-
b. Non wage	9,497.13	68.71%	6,525.75	297.14	993.28	694.24	924.71	469.60	808.98	496.32	515.70	701.84	623.94		-
-Purchases	1,644.42	56.49%	928.93	125.21	48.00	31.15	169.72	47.09	83.47	112.59	102.99	127.09	81.62		-
Maintenance supplies	289.50	35.73%	103.45	0.52	3.75	4.51	8.58	4.97	9.63	10.77	53.76	2.81	4.14		-
Administration supplies	232.12	43.29%	100.48	0.29	1.72	6.18	7.75	12.35	15.38	19.90	8.23	20.04	8.63		-
Food and agricultural products	162.06	94.79%	153.61	-	32.97	4.96	34.05	5.93	5.22	28.75	8.07	5.81	27.85		-
Clothing and decoration	169.43	36.48%	61.80	0.90	0.14	0.64	3.09	1.12	6.46	2.33	0.61	44.35	2.15		-
Small tools, material, furniture and equip.	457.77	55.69%	254.92	123.33	4.64	7.32	11.58	15.92	26.99	29.34	15.93	10.36	9.52		-
Energy and water	163.74	60.53%	99.11	0.16	4.67	7.32	8.75	6.40	18.39	19.89	14.28	10.89	8.36		-
Health supplies and equipment	166.62	92.72%	154.48	-	0.09	0.11	95.93	0.40	1.04	1.61	1.95	32.59	20.76		-
Other supplies	3.18	33.83%	1.08	-	-	0.11	-	-	0.37	-	0.15	0.24	0.21		-
-Services	1,885.63	44.31%	835.56	10.25	55.99	55.19	77.26	82.61	85.94	99.98	132.33	120.96	115.04		-
o.w/ -Rentals and charges (furniture)	23.12	82.61%	19.10	1.98	7.91	2.03	0.26	1.24	1.93	0.96	0.23	2.27	0.29		-
-Maintenance and repairs	967.39	49.39%	477.76	1.67	9.81	15.02	23.91	49.48	50.27	60.79	96.04	91.02	79.74		-
-Financial charges	542.08	76.14%	412.76	6.57	115.41	43.71	13.32	19.29	8.24	72.56	72.76	43.30	17.60		-
o.w/ -Interests on domestic debt	-	...	0.19	-	0.12	-	-	-	0.07	-	-	-	-		-
-Interests on external debt	542.08	63.72%	345.43	6.53	101.68	37.19	12.58	6.25	1.65	66.01	65.69	36.78	11.08		-
-Social Benefit	2,163.72	82.78%	1,791.04	89.65	151.28	161.37	313.25	195.02	144.32	151.19	159.79	211.39	213.78		-
o.w/- Social Security Benefits	1,004.36	90.10%	904.89	75.40	79.58	88.30	101.86	91.49	93.45	91.28	93.81	97.32	92.41		-
-Social Assistance to citizens	948.58	83.19%	789.16	12.24	65.84	58.64	202.23	91.69	44.19	49.86	55.64	105.87	102.98		-
-Social Assistance to social and cultural entities	144.90	58.00%	84.03	1.98	5.46	13.82	8.99	6.07	6.58	7.17	10.27	5.61	18.07		-

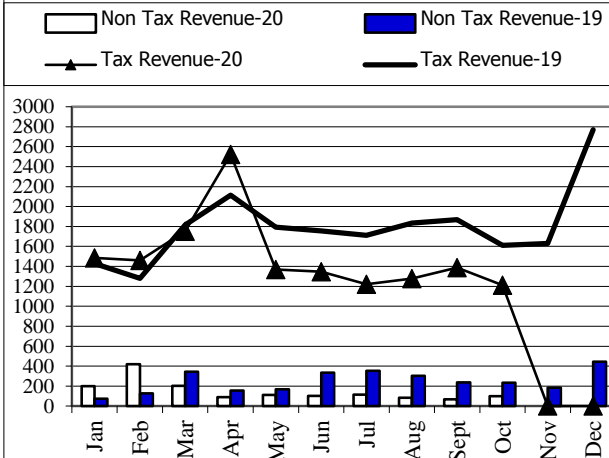
TOFE: BUDGET IMPLEMENTATION FOR 2020															
	2020 C.B.L.	Total Act /BL2020	Total Act	Jan-20	Feb-20	Mar-20	Apr-20	May-20	Jun-20	Jul-20	Aug-20	Sep-20	Oct-20	Nov-20	Dec-20
-Other social benefits	13.66	79.42%	10.85	-	-	-	-	5.62	-	2.81	-	2.42	-	-	-
-Grants	1,892.45	109.03%	2,063.43	62.50	474.48	348.98	335.37	111.45	375.13	48.68	43.61	86.79	176.44	-	-
-Other non wage	1,368.84	36.09%	494.04	2.96	148.12	53.84	15.79	14.14	111.89	11.33	4.21	112.31	19.45	-	-
o.w/ -Unanticipated Expense(Reserve)	838.88	0.00%	-	-	-	-	-	-	-	-	-	-	-	-	-
2. CAPITAL	11,953.05	56.67%	6,773.77	250.23	382.18	877.20	687.96	403.33	1,216.84	903.00	402.32	451.22	1,199.49	-	-
Domestic Financing	5,899.86	59.62%	3,517.31	30.82	164.95	332.42	198.91	102.20	811.83	531.15	138.85	234.20	971.97	-	-
Tangible fixed assets and land	5,600.56	62.50%	3,500.63	30.82	164.95	332.42	198.91	102.20	795.37	530.93	138.85	234.20	971.97	-	-
Investments	32.80	50.85%	16.68	-	-	-	-	-	16.46	0.22	-	-	-	-	-
Other financial assets	266.50	0.00%	-	-	-	-	-	-	-	-	-	-	-	-	-
External assistance (Project)	6,053.19	53.80%	3,256.46	219.41	217.23	544.78	489.05	301.13	405.00	371.85	263.47	217.02	227.52	-	-
CURRENT DEF/SURPL.comt (I.I-IL.I)	5,862.44	52.70%	3,089.66	817.66	228.74	430.34	1,111.95	351.24	(130.24)	71.59	194.28	37.51	(23)	-	-
OVERALL DEF/SURPL.comt (I-II)	(5,897.27)	...	(3,535.44)	567.43	(150.07)	(430.03)	467.66	(49.39)	(1,342.60)	(808.25)	(202.34)	(402.73)	(1,185.11)	-	-
CURRENT DEF/SURPL.cash(comt.+3)	5,862.44	52.70%	3,089.66	817.66	228.74	430.34	1,111.95	351.24	(130.24)	71.59	194.28	37.51	(23.42)	-	-
OVERALL DEF/SURPL.cash (com.+3)	(5,897.27)	...	(3,535.44)	567.43	(150.07)	(430.03)	467.66	(49.39)	(1,342.60)	(808.25)	(202.34)	(402.73)	(1,185.11)	-	-
III. FINANCING	5,897.27	59.95%	3,535.44	(567.43)	150.07	430.03	(467.66)	49.39	1,342.60	808.25	202.34	402.73	1,185.11	-	-
I. FOREIGN FINANCING	5,197.27	69.96%	3,636.00	202.72	16.41	434.26	537.94	256.34	405.10	253.82	1,092.95	68.31	368.16	-	-
a. Budget support	250.00	529.95%	1,324.87	-	-	-	97.86	-	12.54	0.24	1,034.73	-	179.50	-	-
-Grants-budget support	162.00	130.63%	211.62	-	-	-	9.35	-	12.54	-	10.23	-	179.50	-	-
Capital Support	162.00	130.63%	211.62	-	-	-	9.35	-	12.54	-	10.23	-	179.50	-	-
Bilateral grant for investment expense	162.00	130.63%	211.62	-	-	-	9.35	-	12.54	-	10.23	-	179.50	-	-
-Debt and related liabilities-budget support	88.00	1265.07%	1,113.26	-	-	-	88.52	-	-	0.24	1,024.50	-	-	-	-
Foreign borrowing	88.00	1265.07%	1,113.26	-	-	-	88.52	-	-	0.24	1,024.50	-	-	-	-
Foreign borrowings from multilateral agencies	88.00	1265.07%	1,113.26	-	-	-	88.52	-	-	0.24	1,024.50	-	-	-	-
b. Project aid	6,053.19	53.93%	3,264.65	219.24	215.49	578.36	487.80	288.32	400.81	360.54	262.72	209.32	242.06	-	-
Spent	6,053.19	53.80%	3,256.46	219.41	217.23	544.78	489.05	301.13	405.00	371.85	263.47	217.02	227.52	-	-
-Grants	958.28	83.33%	798.56	79.86	79.86	79.86	79.86	79.86	79.86	79.86	79.86	79.86	79.86	-	-
Bilateral grant for investment expense	958.28	83.33%	798.56	79.86	79.86	79.86	79.86	79.86	79.86	79.86	79.86	79.86	79.86	-	-
-Debt and related liabilities	5,094.91	48.24%	2,457.89	139.56	137.37	464.92	409.19	221.27	325.15	291.99	183.61	137.17	147.66	-	-
Foreign borrowing	5,094.91	48.24%	2,457.89	139.56	137.37	464.92	409.19	221.27	325.15	291.99	183.61	137.17	147.66	-	-
Foreign borrowings from multilateral agencies	2,037.97	40.08%	816.71	37.09	77.03	103.81	124.83	95.70	110.15	108.42	39.02	70.06	50.59	-	-
Foreign borrowings from bilateral agencies	3,056.95	53.69%	1,641.18	102.47	60.34	361.11	284.36	125.57	215.00	183.57	144.59	67.10	97.07	-	-
Pending		...	8.19	(0.18)	(1.74)	33.58	(1.24)	(12.81)	(4.20)	(11.31)	(0.75)	(7.71)	14.54	-	-

TOFE: BUDGET IMPLEMENTATION FOR 2020															
	2020 C.B.L.	Total Act /BL2020	Total Act	Jan-20	Feb-20	Mar-20	Apr-20	May-20	Jun-20	Jul-20	Aug-20	Sep-20	Oct-20	Nov-20	Dec-20
c. Amortization on external debts	(1,105.92)	...	(953.53)	(16.52)	(199.08)	(144.10)	(47.73)	(31.98)	(8.24)	(106.97)	(204.50)	(141.01)	(53.39)		-
2. DOMESTIC FINANCING	700.00	13.84%	96.85	24.56	(21.71)	(4.93)	15.97	3.53	(16.18)	83.47	16.01	13.59	(17.46)		-
a. Net bank financing (monetary survey)	700.00	13.84%	96.85	24.56	(21.71)	(4.93)	15.97	3.53	(16.18)	83.47	16.01	13.59	(17.46)		-
- Government's deposits	700.00	13.84%	96.85	24.56	(21.71)	(4.93)	15.97	3.53	(16.18)	83.47	16.01	13.59	(17.46)		-
3. OUTSTANDING OPERATIONS		...	(197.40)	(794.71)	155.37	0.70	(1,021.57)	(210.48)	953.69	470.96	(906.62)	320.83	834.41		-
Error	0.00	-1.15%	(0.00)	-	(0.00)	(0.00)	-	(0.00)	(0.00)	0.00	-	-	0.00		-
Exchange rate (R/\$)		...		4,050	4,070	4,070	4,099	4,116	4,093	4,099	4,105	4,100	4,060		-
Provincial revenue	2,278.69	76.73%	1,748.37	125.64	352.41	303.11	150.41	106.49	142.51	146.90	138.57	161.73	120.60		-
o.w. provincial tax revenue	2,086.31	61.15%	1,275.88	120.47	147.35	157.79	129.28	99.87	129.73	126.93	129.42	145.81	89.22		-
o.w. prov. non-tax revenue	145.36	49.63%	72.14	5.17	2.27	3.69	2.97	2.29	4.91	19.81	5.52	9.72	15.80		-
o.w. prov. Transfer from central	47.02	851.38%	400.35	-	202.79	141.63	18.17	4.33	7.88	0.16	3.63	6.20	15.58		-
Provincial expenditure	2,278.69	36.34%	828.13	0.55	86.71	170.34	143.69	50.31	66.82	90.78	113.49	38.36	67.08		-
o.w. wage and salary	160.60	41.70%	66.98	0.54	8.29	8.04	9.38	6.90	7.71	7.27	5.88	6.17	6.79		-
o.w. non-wage	1,655.74	32.13%	532.06	0.01	64.06	121.70	46.47	43.21	50.94	51.21	67.57	26.59	60.29		-
o.w. investment	462.36	49.55%	229.09	-	14.36	40.59	87.85	0.20	8.17	32.30	40.04	5.60	-		-
Provincial Balance	-	...	920.25	125.09	265.71	132.78	6.72	56.17	75.70	56.12	25.08	123.37	53.51		-
Contribution from casino and Lottery	201.23	75.30%	151.53	45.88	9.94	66.40	5.16	12.64	0.22	0.25	3.66	3.68	3.70		-

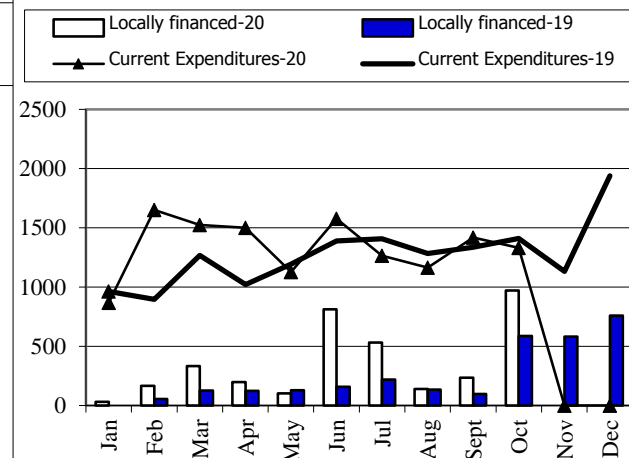
Revenue and Trade Related Tax 2019-2020



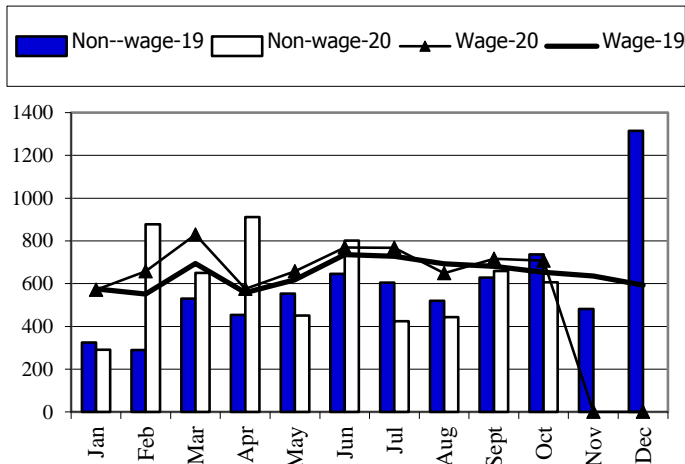
Tax and Non Tax Revenue 2019-2020



Current Expenditures and Domestic Financing 2019-2020

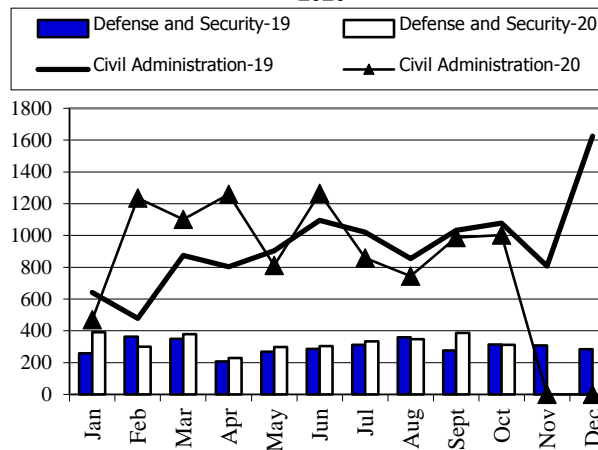


Wage and Non-wage 2019-2020

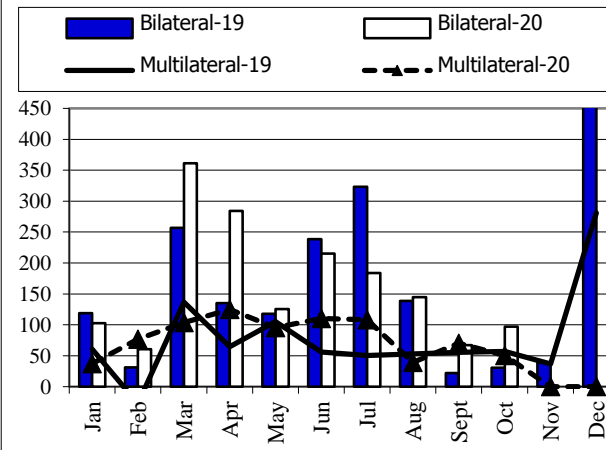


Source: MEF

Defense and Security and Civil Administrative Expenditure 2019-2020



Multilateral and Bilateral Disbursements 2019-2020



CURRENT BUDGET EXPENDITURE BY MINISTRY 2020

	2020 C.B.L.	Total Act /BL2020	Total Act	Jan-20	Feb-20	Mar-20	Apr-20	May-20	Jun-20	Jul-20	Aug-20	Sep-20	Oct-20	Nov-20	Dec-20
Total Current Expenditures	18,036,884	74.44%	13,427,150	868,187	1,650,846	1,523,701	1,500,467	1,127,831	1,577,609	1,264,604	1,164,124	1,417,940	1,331,841		
I. General Administration	2,605,991	85.53%	2,228,932	123,462	288,172	252,646	398,031	131,564	284,393	158,037	123,638	283,797	185,193		
01. Royal Palace	102,815	62.66%	64,423	4,570	7,640	9,476	4,813	8,120	7,010	7,515	4,433	4,534	6,312		
02. National Assembly	193,937	82.40%	159,802	23,755	23,975	25,650	22,935	-	25,323	6,174	-	-	31,992		
03. Senate	87,309	84.99%	74,200	22,665	4	11,986	7,622	9	12,875	4,523	599	12,698	1,246		
04. Councitutional Council	13,700	93.86%	12,859	3,117	1,539	-	2,494	23	392	2,611	18	9	2,656		
05.1 Council of Minister	427,020	77.41%	330,542	15,426	22,969	45,966	47,772	26,226	37,992	32,105	12,916	58,766	30,405		
05.4 CDC	16,200	51.04%	8,268	96	94	153	101	1,355	1,898	1,666	1,995	490	420		
07.2 Interior-Administration	255,261	88.13%	224,962	15,103	24,787	24,641	28,023	22,978	21,048	21,914	22,630	21,191	22,646		
08. Relations Assembly and Inspections	44,229	64.26%	28,423	1,355	2,079	4,064	4,438	1,546	3,512	3,122	2,640	3,349	2,317		
09. Foreign Affairs and Int'l Cooperation	154,521	70.34%	108,683	10,447	20,384	13,067	10,805	1,895	13,226	17,339	14,255	3,950	3,316		
10. Economy and Finance	886,019	108.95%	965,344	11,929	164,524	91,302	252,226	35,301	134,113	36,114	41,441	149,720	48,674		
14. Planning	97,271	69.90%	67,989	3,781	6,366	8,424	4,498	6,373	6,733	6,683	6,518	5,389	13,226		
28. Urbanization and Construction	137,259	58.49%	80,283	3,584	6,445	8,238	4,474	9,663	7,580	7,967	6,981	14,317	11,035		
30. National Election Committee	64,622	42.45%	27,432.24	1,106	1,126	1,893	1,977	9,891	2,977	1,942	1,161	1,490	3,869		
31. National Audit Authority	14,986	58.04%	8,697	666	666	666	687	1,355	1,147	1,642	867	323	677		
33.1 Anti-corruption Authority	49,604	58.56%	29,050	4,217	2,864	2,443	2,278	2,130	4,772	2,141	3,123	2,866	2,215		
34. Public Function	61,238	62.01%	37,972	1,644	2,718	4,678	2,889	4,718	3,794	4,580	4,060	4,705	4,187		
II. Defense and Security	4,405,117	76.48%	3,369,007	396,581	307,810	388,977	236,435	306,270	314,456	343,570	358,030	393,257	323,623		
06. National Defense	2,536,728	82.16%	2,084,179	173,376	200,218	181,031	217,328	194,537	198,934	210,920	244,830	259,096	203,909		
07.1 Interior - Public Security	1,703,340	70.21%	1,195,988	218,011	99,366	197,233	110,79	103,013	105,005	122,992	103,520	128,670	107,099		
26. Justice	165,049	53.83%	88,840	5,194	8,226	10,712	8,028	8,719	10,517	9,658	9,680	5,492	12,614		
III. Social Administrative	6,747,860	76.60%	5,168,573	252,279	436,378	460,276	722,167	583,716	558,499	579,936	459,970	565,428	549,922		
11. Information	90,170	70.99%	64,012	2,980	4,892	10,088	6,023	10,429	7,616	6,769	5,345	5,101	4,772		
12. Public Health	1,636,498	81.08%	1,326,918	34,464	95,714	72,727	318,253	192,377	95,120	98,704	99,030	173,485	147,046		
16. Education, Youth and Sport	3,207,220	71.71%	2,300,006	116,131	225,558	225,976	242,760	242,521	272,779	292,186	215,203	241,109	225,784		
18. Culture and Fine-Arts	185,151	73.54%	136,161	3,649	5,569	7,466	8,056	8,546	31,260	22,800	7,052	20,085	21,679		
19. Environment	95,716	60.12%	57,541	2,406	6,083	7,035	5,873	4,321	6,264	9,171	3,649	6,965	5,774		
21. Social Affair & Veteran	1,137,061	88.55%	1,006,874	78,673	84,693	108,954	114,401	97,648	100,813	103,445	108,984	104,307	104,955		
23. Public Worship and Religion	73,427	70.65%	51,874	2,037	3,986	6,896	4,596	5,544	5,633	6,226	4,588	5,864	6,504		
24. Woman Affairs	55,262	64.85%	35,840	1,060	3,124	4,621	4,915	3,331	3,616	5,270	3,015	3,107	3,781		
32. Labour and Vocational Training	267,355	70.82%	189,347	10,879	6,760	16,513	17,292	19,000	35,398	35,364	13,104	5,407	29,629		
IV. Economy Administrative	1,556,835	60.77%	946,021	30,518	65,222	111,100	58,569	83,148	104,090	109,936	143,866	126,833	112,739		
05.3 Civil Aviation Secretariate	60,164	53.35%	32,099	2,493	69	2,577	238	4,747	1,637	6,695	5,410	6,611	1,621		
13. Industry, Mines and Energy	74,247	37.52%	27,859	1,255	2,130	2,617	2,872	3,483	3,318	3,647	2,685	2,995	2,857		
15. Commerce	126,476	66.78%	84,457	2,727	3,735	12,678	6,418	6,793	17,767	5,678	7,104	3,700	17,858		
17. Agriculture, Forestry and Fishery	283,076	75.90%	214,853	7,723	22,199	35,087	11,424	22,781	23,858	28,341	18,153	21,802	23,484		
20. Rural Development	196,723	34.54%	67,945	2,071	3,853	11,033	4,441	4,858	10,793	9,927	8,129	6,964	5,876		
22. Posts and Telecommunications	79,595	72.14%	57,416	1,797	2,342	5,058	3,485	2,931	4,584	7,782	20,651	5,625	3,161		
25. Public Works and Transport	406,902	58.73%	238,990	4,769	20,263	22,867	9,373	19,310	23,438	20,845	56,700	26,795	34,631		
27. Tourism	102,966	62.44%	64,287	2,746	2,749	6,287	10,388	7,993	4,980	10,572	8,968	4,302	5,303		
29. Water Resources and Meteorology	164,042	73.20%	120,085	3,452	5,506	7,511	7,092	6,401	8,810	10,454	13,112	43,070	14,677		
35. Industry and Handicrafts	62,644	60.71%	38,029	1,485	2,376	5,384	2,838	3,851	4,905	5,996	2,954	4,969	3,270		
V. Miscellaneous	2,721,081	63.01%	1,714,617	65,347	553,266	310,703	85,265	23,132	316,171	73,125	78,619	48,624	160,365		
99.Unexpect Expenditure	2,721,081	63.01%	1,714,617	65,347	553,266	310,703	85,265	23,132	316,171	73,125	78,619	48,624	160,365		

NOTE



TOFE report was issued based on temporary data as following:

1. Data on Revenue at National level was received on November 20, 2020
2. Data on Expenditure at National Level was received on November 20, 2020
3. Data on Loan and Grant of multilateral and bilateral was retrieved on November 19, 2020
4. Financial Operation Data (Credit Bank) was received on November 04, 2020

TOFE report will be updated in the next released.

