



# State Budget Implementation

June, 2024

Content	Page
1. Brief	1
2. TOFE	2
3. Table of Ministry and Institution Spending	7
4. Note: Report preparation	9



## 1. Executive Summary of TOFE

**The implementation of the state budget for June 2024 in the form of GFSM1986 or TOFE shows that, the Budgetary Central Government (BCG) collected 2,130 billion riels in domestic revenue, equivalent to 7.13% of the 2024 annual budget law (BL), while its expenditure reached 2,396 billion riels, equivalent to 6.95% of the 2024 BL. As a result, BCG's budget execution in June has a 406 billion riels deficit.**

**The six months of 2024, BCG collected 2,130 billion riels in domestic revenue, equivalent to 7.13% of the 2024 BL** similar to the same period last year in which consisting of 1,710 billion riels in tax revenue, equivalent to 6.64% of the 2024 BL and 421 billion riels in non-tax revenue, equivalent to 13.67% of the 2024 BL.

**In June 2024, BCG's expenditure reached 2,396 billion riels, equivalent to 6.95% of the 2024 BL, a 1.29% decrease compared to the same period last year,** consisting of 1,755 billion riels in current expenditure, equivalent to 7.38% of the 2024 BL contributing to a decrease of 0.45% compared to the same period last year, and 641 billion riels in capital expenditure, equivalent to 6% of the 2024 BL. Overall, BCG's expenditure execution continues to maintain the principle of restricting unnecessary expenditures and allocating budgets to implement proactive objectives.

**The Royal Government continues to manage and utilize BCG's total financing effectively and carefully, which has allowed the need for budget execution to be met in a timely manner.** Foreign financing achieved 1,175 billion riels equivalent to 25.54% of the 2024 BL and domestic financing achieved 1,606 billion riels equivalent to 35.81% of the 2024 BL, while the net government's deposits reached 12 billion riels.

TOFE : BUDGET EXECUTION OF 2024															
	2024 C.B.L	Total Act /BL2024	Total Act	Jan-24	Feb-24	Mar-24	Apr-24	May-24	Jun-24	Jul-24	Aug-24	Sep-24	Oct-24	Nov-24	Dec-24
<b>I. DOMESTIC REVENUE</b>	<b>29,895.98</b>	<b>44.32%</b>	<b>13,251.08</b>	<b>1,875.20</b>	<b>1,804.78</b>	<b>3,168.84</b>	<b>2,348.06</b>	<b>1,921.76</b>	<b>2,132.44</b>	-	-	-	-	-	-
<b>I.CURRENT REVENUE</b>	<b>28,836.48</b>	<b>45.26%</b>	<b>13,050.16</b>	<b>1,859.80</b>	<b>1,794.26</b>	<b>3,158.26</b>	<b>2,200.55</b>	<b>1,906.81</b>	<b>2,130.48</b>	-	-	-	-	-	-
<b>a. TAX REVENUE</b>	<b>25,759.06</b>	<b>45.27%</b>	<b>11,661.81</b>	<b>1,729.18</b>	<b>1,527.83</b>	<b>2,979.33</b>	<b>1,986.25</b>	<b>1,729.36</b>	<b>1,709.87</b>	-	-	-	-	-	-
<b>Domestic tax revenue</b>	<b>23,200.71</b>	<b>44.66%</b>	<b>10,361.48</b>	<b>1,530.09</b>	<b>1,341.95</b>	<b>2,740.69</b>	<b>1,757.65</b>	<b>1,498.68</b>	<b>1,492.42</b>	-	-	-	-	-	-
Direct Tax (income tax, profits tax)	8,953.17	50.80%	4,548.21	633.69	445.65	1,770.50	773.60	447.49	477.28	-	-	-	-	-	-
Indirect Tax	14,247.53	40.80%	5,813.27	896.40	896.30	970.19	984.05	1,051.19	1,015.14	-	-	-	-	-	-
o.w/ - Excise Tax on specific goods	12,479.55	38.99%	4,865.16	760.59	755.30	770.86	834.17	904.39	839.84	-	-	-	-	-	-
o.w/ -Special Excise Tax(petroleum,others)	1,506.98	53.68%	809.00	105.12	120.65	175.94	127.03	125.37	154.89	-	-	-	-	-	-
o.w/ - Excise Tax on specific services	100.00	46.62%	46.62	7.41	7.72	7.57	8.04	8.32	7.56	-	-	-	-	-	-
<b>Other tax revenues</b>	<b>161.00</b>	<b>57.44%</b>	<b>92.48</b>	<b>23.28</b>	<b>12.63</b>	<b>15.81</b>	<b>14.81</b>	<b>13.11</b>	<b>12.83</b>	-	-	-	-	-	-
<b>Taxes on international trade</b>	<b>2,558.35</b>	<b>50.83%</b>	<b>1,300.33</b>	<b>199.09</b>	<b>185.88</b>	<b>238.64</b>	<b>228.60</b>	<b>230.68</b>	<b>217.45</b>	-	-	-	-	-	-
Taxes and duties on imports	2,502.00	47.10%	1,178.55	179.18	175.63	218.29	203.61	206.47	195.37	-	-	-	-	-	-
o.w/ -Customs duties on imports	1,616.92	44.39%	717.71	113.44	105.32	112.96	127.50	133.52	124.96	-	-	-	-	-	-
-Customs duties on petroleum products	446.76	51.01%	227.91	37.91	32.24	53.44	38.24	34.96	31.13	-	-	-	-	-	-
-Additional tax on oil product - Road maintenance	393.17	51.37%	201.99	22.28	32.35	47.22	32.93	32.75	34.46	-	-	-	-	-	-
-others	45.16	68.51%	30.94	5.55	5.72	4.67	4.95	5.24	4.82	-	-	-	-	-	-
Taxes and duties on exports	56.35	216.10%	121.78	19.91	10.25	20.35	24.98	24.20	22.08	-	-	-	-	-	-
o.w/-Tax on timber exports	5.89	2.09%	0.12	-	-	-	0.05	-	0.07	-	-	-	-	-	-
-Tax on rubber exports	4.62	31.33%	1.45	-	0.02	0.07	0.57	0.18	0.60	-	-	-	-	-	-
-Tax on export of agricultural products	45.84	262.23%	120.21	19.91	10.23	20.27	24.36	24.02	21.41	-	-	-	-	-	-
<b>b. NON TAX REVENUE</b>	<b>3,077.42</b>	<b>45.11%</b>	<b>1,388.35</b>	<b>130.62</b>	<b>266.43</b>	<b>178.93</b>	<b>214.30</b>	<b>177.46</b>	<b>420.61</b>	-	-	-	-	-	-
<b>State Property Revenue</b>	<b>555.93</b>	<b>33.39%</b>	<b>185.61</b>	<b>27.40</b>	<b>86.60</b>	<b>13.75</b>	<b>28.57</b>	<b>17.73</b>	<b>11.55</b>	-	-	-	-	-	-
Concession and rental land	263.13	39.91%	105.00	27.40097	9.39	13.75	28.57	17.73	8.16	-	-	-	-	-	-
Public Enterprises Income	292.80	27.53%	80.61	-	77.21	-	-	-	3.39	-	-	-	-	-	-
<b>Income from Sales, Rental of Properties and Services</b>	<b>2,160.15</b>	<b>52.06%</b>	<b>1,124.50</b>	<b>101.03</b>	<b>170.33</b>	<b>157.03</b>	<b>138.25</b>	<b>154.59</b>	<b>403.27</b>	-	-	-	-	-	-
Income of administrative public enterprises -operational services (for profit)	865.80	58.36%	505.31	11.46	73.42	53.86	30.92	32.68	302.96	-	-	-	-	-	-
Sales of Property of Public Administration	129.75	51.00%	66.18	10.61	11.52	16.65	3.21	20.42	3.76	-	-	-	-	-	-
Administrative fees	767.31	51.02%	391.49	49.78	58.76	57.79	74.24	74.69	76.22	-	-	-	-	-	-
Sales of Services	45.91	19.61%	9.00	0.82	0.90	1.17	2.31	1.42	2.38	-	-	-	-	-	-
Other transaction fees	317.10	42.18%	133.76	19.28	23.72	25.79	24.74	23.13	17.10	-	-	-	-	-	-

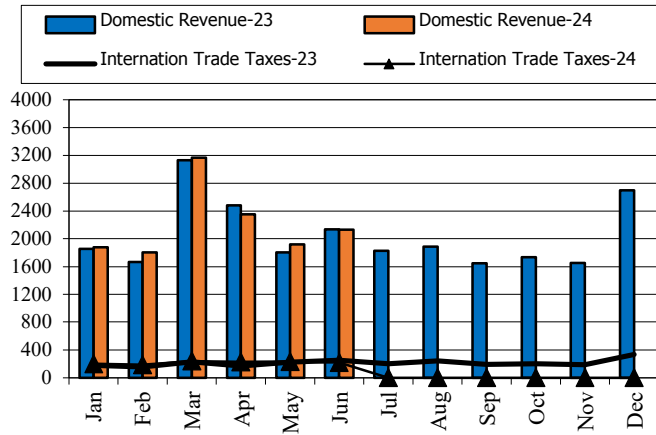
TOFE : BUDGET EXECUTION OF 2024															
	2024 C.B.L.	Total Act /BL2024	Total Act	Jan-24	Feb-24	Mar-24	Apr-24	May-24	Jun-24	Jul-24	Aug-24	Sep-24	Oct-24	Nov-24	Dec-24
Other Rental of immovable properties	34.28	54.74%	18.77	9.08	2.00	1.77	2.81	2.25	0.85	-	-	-	-	-	-
<b>Other non tax</b>	<b>361.34</b>	<b>21.65%</b>	<b>78.24</b>	<b>2.19</b>	<b>9.49</b>	<b>8.15</b>	<b>47.49</b>	<b>5.13</b>	<b>5.78</b>	-	-	-	-	-	-
o.w/ Other exceptional revenues	-	...	14.00	-	5.36	3.88	1.58	3.18	-	-	-	-	-	-	-
<b>2. CAPITAL REVENUE</b>	<b>1,059.50</b>	<b>18.96%</b>	<b>200.91</b>	<b>15.40</b>	<b>10.53</b>	<b>10.58</b>	<b>147.50</b>	<b>14.94</b>	<b>1.97</b>	-	-	-	-	-	-
Other financial assets	363.13	32.35%	117.46	-	-	4.78	112.67	-	-	-	-	-	-	-	-
<b>II. BUDGET EXPENDITURE</b>	<b>34,497.44</b>	<b>43.56%</b>	<b>15,026.73</b>	<b>2,049.20</b>	<b>4,576.84</b>	<b>1,589.07</b>	<b>2,697.70</b>	<b>1,717.57</b>	<b>2,396.36</b>	-	-	-	-	-	-
<b>1. CURRENT EXPENDITURE</b>	<b>23,805.84</b>	<b>50.03%</b>	<b>11,909.76</b>	<b>1,881.67</b>	<b>3,914.29</b>	<b>1,112.91</b>	<b>2,074.14</b>	<b>1,171.75</b>	<b>1,754.98</b>	-	-	-	-	-	-
<b>a. Wages</b>	<b>8,004.83</b>	<b>46.72%</b>	<b>3,739.61</b>	<b>591.85</b>	<b>584.08</b>	<b>620.41</b>	<b>758.95</b>	<b>557.56</b>	<b>626.76</b>	-	-	-	-	-	-
Personnel charges-civil administrative	3,120.99	56.09%	1,750.67	261.07	266.39	302.17	417.64	235.05	268.36	-	-	-	-	-	-
o.w/ Diplomatic salary	5.44	65.46%	3.56	-	-	1.35	1.13	0.04	1.04	-	-	-	-	-	-
Personnel charges-national defence and security	4,883.84	40.72%	1,988.93	330.77	317.69	318.24	341.31	322.52	358.41	-	-	-	-	-	-
<b>b. Non wage</b>	<b>15,801.00</b>	<b>51.71%</b>	<b>8,170.15</b>	<b>1,289.83</b>	<b>3,330.22</b>	<b>492.50</b>	<b>1,315.19</b>	<b>614.19</b>	<b>1,128.22</b>	-	-	-	-	-	-
<b>-Purchases</b>	<b>1,537.31</b>	<b>30.95%</b>	<b>475.77</b>	<b>111.13</b>	<b>65.14</b>	<b>47.44</b>	<b>97.38</b>	<b>81.19</b>	<b>73.48</b>	-	-	-	-	-	-
Maintenance supplies	314.93	14.33%	45.14	2.40	3.90	5.27	12.39	10.63	10.55	-	-	-	-	-	-
Administration supplies	197.05	26.46%	52.14	1.49	6.07	7.46	10.61	15.28	11.23	-	-	-	-	-	-
Food and agricultural products	177.78	52.83%	93.93	0.07	37.12	8.84	34.54	7.03	6.32	-	-	-	-	-	-
Clothing and decoration	166.95	9.67%	16.15	4.66	0.49	1.34	2.75	0.83	6.08	-	-	-	-	-	-
Small tools, material, furniture and equip.	373.65	52.39%	195.74	99.30	11.23	12.38	20.20	25.51	27.12	-	-	-	-	-	-
Energy and water	156.79	46.03%	72.16	3.20	6.33	12.15	16.62	21.92	11.93	-	-	-	-	-	-
Health supplies and equipment	145.28	0.08%	0.11	-	-	-	0.07	0.00	0.04	-	-	-	-	-	-
Other supplies	4.88	8.29%	0.41	-	-	-	0.20	-	0.20	-	-	-	-	-	-
<b>-Services</b>	<b>1,896.35</b>	<b>23.80%</b>	<b>451.42</b>	<b>36.85</b>	<b>43.89</b>	<b>76.47</b>	<b>100.29</b>	<b>101.76</b>	<b>92.14</b>	-	-	-	-	-	-
o.w/ -Rentals and charges (furniture)	38.61	52.31%	20.20	0.60	0.03	9.60	5.05	0.39	4.53	-	-	-	-	-	-
-Maintenance and repairs	1,857.74	23.21%	431.22	36.26	43.86	66.87	95.24	101.37	87.61	-	-	-	-	-	-
<b>-Financial charges</b>	<b>699.57</b>	<b>31.07%</b>	<b>217.34</b>	<b>13.86</b>	<b>130.86</b>	<b>15.02</b>	<b>30.71</b>	<b>20.52</b>	<b>6.37</b>	-	-	-	-	-	-
o.w/ -Interests on domestic debt	-	...	3.71	2.00	0.26	-	0.42	1.03	-	-	-	-	-	-	-
-Interests on external debt	699.57	30.49%	213.30	11.86	130.59	15.02	29.96	19.50	6.37	-	-	-	-	-	-
<b>-Social Benefit</b>	<b>3,798.34</b>	<b>50.77%</b>	<b>1,928.31</b>	<b>423.74</b>	<b>244.78</b>	<b>202.21</b>	<b>377.56</b>	<b>293.61</b>	<b>386.41</b>	-	-	-	-	-	-
o.w/- Social Security Benefits	2,163.77	63.88%	1,382.16	410.17	120.59	131.76	272.90	140.93	305.81	-	-	-	-	-	-
-Social Assistance to citizens	1,317.33	36.46%	480.28	11.31	109.49	59.77	88.77	147.11	63.82	-	-	-	-	-	-

TOFE : BUDGET EXECUTION OF 2024															
	2024 C.B.L	Total Act /BL2024	Total Act	Jan-24	Feb-24	Mar-24	Apr-24	May-24	Jun-24	Jul-24	Aug-24	Sep-24	Oct-24	Nov-24	Dec-24
-Social Assistance to social and cultural entities	249.28	22.55%	56.22	2.18	14.39	10.37	9.62	5.29	14.37	-	-	-	-	-	-
-Other social benefits	13.39	57.68%	7.72	-	-	-	5.64	-	2.08	-	-	-	-	-	-
<b>-Grants</b>	<b>5,208.53</b>	<b>92.04%</b>	<b>4,793.70</b>	<b>525.36</b>	<b>2,819.70</b>	<b>151.36</b>	612.70	115.17	569.42	-	-	-	-	-	-
<b>-Other non wage</b>	<b>2,660.91</b>	<b>11.41%</b>	<b>303.62</b>	<b>178.88</b>	<b>25.84</b>	<b>0.00</b>	96.55	1.93	0.40	-	-	-	-	-	-
o.w/ -Unanticipated Expense(Reserve)	2,454.27	0.00%	-	-	-	-	-	-	-	-	-	-	-	-	-
<b>2. CAPITAL</b>	<b>10,691.61</b>	<b>29.15%</b>	<b>3,116.97</b>	<b>167.53</b>	<b>662.54</b>	<b>476.15</b>	<b>623.55</b>	<b>545.82</b>	<b>641.38</b>	-	-	-	-	-	-
<b>Domestic Financing</b>	<b>4,483.73</b>	<b>35.81%</b>	<b>1,605.74</b>	<b>0.82</b>	<b>453.71</b>	<b>216.00</b>	<b>378.59</b>	<b>89.88</b>	<b>466.75</b>	-	-	-	-	-	-
Tangible fixed assets and land	4,230.10	37.96%	1,605.74	0.82	453.71	216.00	378.59	89.88	466.75	-	-	-	-	-	-
Investments	219.19	0.00%	-	-	-	-	-	-	-	-	-	-	-	-	-
Other financial assets	34.44	0.00%	-	-	-	-	-	-	-	-	-	-	-	-	-
<b>External assistance (Project)</b>	<b>6,207.88</b>	<b>24.34%</b>	<b>1,511.23</b>	<b>166.71</b>	<b>208.83</b>	<b>260.16</b>	<b>244.96</b>	<b>455.94</b>	<b>174.63</b>	-	-	-	-	-	-
<b>CURRENT DEF/SURPL.comt (I.I-II.I)</b>	<b>5,030.64</b>	<b>22.67%</b>	<b>1,140.41</b>	<b>(21.87)</b>	<b>(2,120.03)</b>	<b>2,045.34</b>	<b>126.41</b>	<b>735.07</b>	<b>375.50</b>	-	-	-	-	-	-
<b>CURRENT DEF/SURPL.cash(comt.+3)</b>	<b>5,030.64</b>	<b>22.67%</b>	<b>1,140.41</b>	<b>(21.87)</b>	<b>(2,120.03)</b>	<b>2,045.34</b>	<b>126.41</b>	<b>735.07</b>	<b>375.50</b>	-	-	-	-	-	-
<b>III. FINANCING</b>	<b>4,601.46</b>	<b>38.59%</b>	<b>1,775.65</b>	<b>174.00</b>	<b>2,772.05</b>	<b>(1,579.77)</b>	<b>349.64</b>	<b>(204.19)</b>	<b>263.92</b>	-	-	-	-	-	-
<b>1. FOREIGN FINANCING</b>	<b>4,600.84</b>	<b>25.54%</b>	<b>1,174.93</b>	<b>121.19</b>	<b>(297.94)</b>	<b>355.84</b>	<b>356.30</b>	<b>416.89</b>	<b>222.65</b>	-	-	-	-	-	-
<b>a. Budget support</b>	<b>507.65</b>	<b>93.57%</b>	<b>475.03</b>	<b>21.92</b>	<b>19.81</b>	<b>140.27</b>	<b>229.99</b>	<b>-</b>	<b>63.03</b>	-	-	-	-	-	-
<b>-Grants-budget support</b>	<b>67.65</b>	<b>26.30%</b>	<b>17.79</b>	<b>-</b>	<b>-</b>	<b>-</b>	<b>17.79</b>	<b>-</b>	<b>-</b>	-	-	-	-	-	-
Capital Support	67.65	26.30%	17.79	-	-	-	17.79	-	-	-	-	-	-	-	-
Bilateral grant for investment expense	67.65	26.30%	17.79	-	-	-	17.79	-	-	-	-	-	-	-	-
<b>-Debt and related liabilities-budget support</b>	<b>440.00</b>	<b>103.92%</b>	<b>457.24</b>	<b>21.92</b>	<b>19.81</b>	<b>140.27</b>	<b>212.20</b>	<b>-</b>	<b>63.03</b>	-	-	-	-	-	-
Foreign borrowing	440.00	103.92%	457.24	21.92	19.81	140.27	212.20	-	63.03	-	-	-	-	-	-
Foreign borrowings from multilateral agencies	-	...	202.20	-	-	-	202.20	-	-	-	-	-	-	-	-
Borrowings from financial market	440.00	57.96%	255.04	21.92	19.81	140.27	10.00	-	63.03	-	-	-	-	-	-
<b>b. Project aid</b>	<b>6,207.88</b>	<b>22.94%</b>	<b>1,423.94</b>	<b>154.23</b>	<b>165.39</b>	<b>258.27</b>	<b>222.90</b>	<b>454.65</b>	<b>168.51</b>	-	-	-	-	-	-
<b>Spent</b>	<b>6,207.88</b>	<b>23.64%</b>	<b>1,467.59</b>	<b>160.47</b>	<b>187.11</b>	<b>259.22</b>	<b>233.93</b>	<b>455.30</b>	<b>171.57</b>	-	-	-	-	-	-
<b>-Grants</b>	<b>628.73</b>	<b>10.44%</b>	<b>65.67</b>	<b>15.40</b>	<b>10.53</b>	<b>5.80</b>	<b>17.04</b>	<b>14.94</b>	<b>1.97</b>	-	-	-	-	-	-
Bilateral grant for investment expense	628.73	10.44%	65.67	15.40	10.53	5.80	17.04	14.94	1.97	-	-	-	-	-	-
<b>-Debt and related liabilities</b>	<b>5,579.15</b>	<b>25.13%</b>	<b>1,401.92</b>	<b>145.07</b>	<b>176.59</b>	<b>253.42</b>	<b>216.89</b>	<b>440.35</b>	<b>169.60</b>	-	-	-	-	-	-
Foreign borrowing	5,579.15	25.13%	1,401.92	145.07	176.59	253.42	216.89	440.35	169.60	-	-	-	-	-	-
Foreign borrowings from multilateral agencies	5,579.15	9.28%	517.47	62.01	99.72	87.48	130.84	128.08	9.34	-	-	-	-	-	-

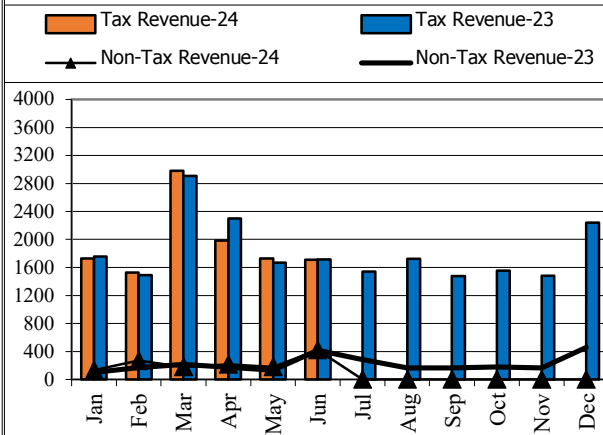
TOFE : BUDGET EXECUTION OF 2024															
	2024 C.B.L.	Total Act /BL2024	Total Act	Jan-24	Feb-24	Mar-24	Apr-24	May-24	Jun-24	Jul-24	Aug-24	Sep-24	Oct-24	Nov-24	Dec-24
Foreign borrowings from bilateral agencies	-	...	884.45	83.06	76.87	165.94	86.05	312.28	160.26	-	-	-	-	-	-
<b>2. DOMESTIC FINANCING</b>	-	...	<b>12.30</b>	<b>2.93</b>	<b>31.22</b>	<b>(32.75)</b>	<b>11.47</b>	<b>1.00</b>	<b>(1.57)</b>	-	-	-	-	-	-
<b>a. Net bank financing (monetary suvey)</b>	-	...	<b>12.30</b>	<b>2.93</b>	<b>31.22</b>	<b>(32.75)</b>	<b>11.47</b>	<b>1.00</b>	<b>(1.57)</b>	-	-	-	-	-	-
- Government's deposits		...	12.30	2.93	31.22	(32.75)	11.47	1.00	(1.57)	-	-	-	-	-	-
<b>3. OUTSTANDING OPERATIONS</b>		...	<b>610.44</b>	<b>59.04</b>	<b>3,027.58</b>	<b>(1,898.00)</b>	<b>(12.13)</b>	<b>(607.78)</b>	<b>41.73</b>	-	-	-	-	-	-
Error	(0.62)	...	22.02	9.16	(11.19)	4.85	6.01	14.29	(1.10)	-	-	-	-	-	-
VAT Refunded claimed (stock 199-07)		...	<b>24,460.00</b>	4,083.00	4,069.00	4,041.00	4,064.00	4,093.00	4,110.00	-	-	-	-	-	-
o.w. provincial tax revenue	3,563.47	61.86%	2,204.35	243.58	1,214.94	206.99	293.20	153.23	92.42	-	-	-	-	-	-
o.w. prov. non-tax revenue	2,214.72	32.03%	709.47	129.47	118.64	138.86	126.23	131.70	64.57	-	-	-	-	-	-
o.w. prov. Transfer from central	238.58	37.21%	88.77	16.34	9.10	12.93	21.00	14.34	15.06	-	-	-	-	-	-
Provincial expenditure	1,110.17	126.66%	1,406.11	97.76	1,087.20	55.20	145.97	7.19	12.79	-	-	-	-	-	-
o.w. wage and salary	2,426.13	47.09%	1,142.57	61.63	173.83	346.63	210.46	223.89	126.14	-	-	-	-	-	-
o.w. non-wage	817.73	38.39%	313.95	22.63	49.28	62.68	64.86	52.38	62.12	-	-	-	-	-	-
o.w. investment	1,372.78	58.52%	803.40	31.00	124.55	278.96	145.60	162.80	60.49	-	-	-	-	-	-
Provincial Balance	235.61	10.70%	25.22	7.99	-	5.00	-	8.70	3.53	-	-	-	-	-	-
Contribution from casino and Lottery	1,137.34	93.36%	1,061.79	181.95	1,041.11	(139.64)	82.74	(70.65)	(33.72)	-	-	-	-	-	-

## CHARTS

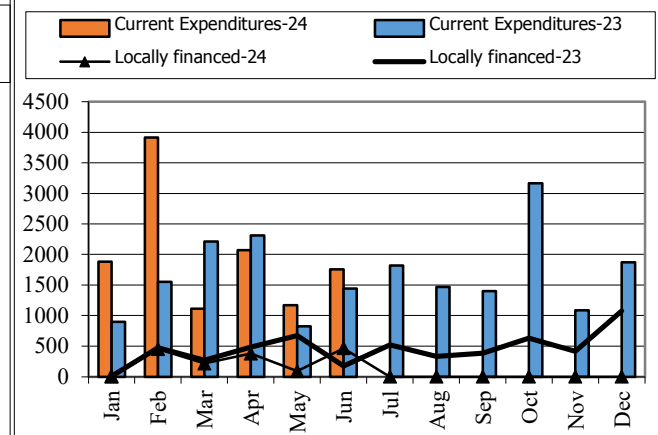
Revenue and Trade Relate Tax 2023-2024



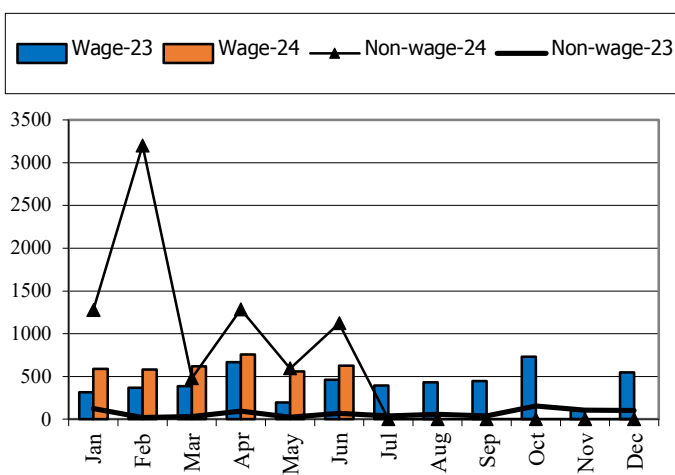
Tax and Non Tax Revenue 2023-2024



Current Expenditures and Domestic Financing 2023-2024



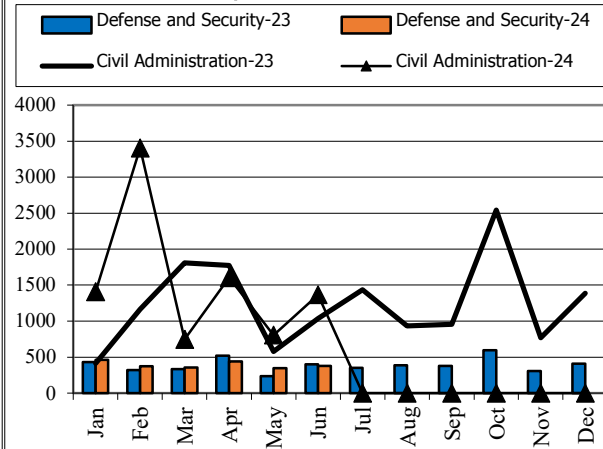
Wage and Non-wage 2023-2024



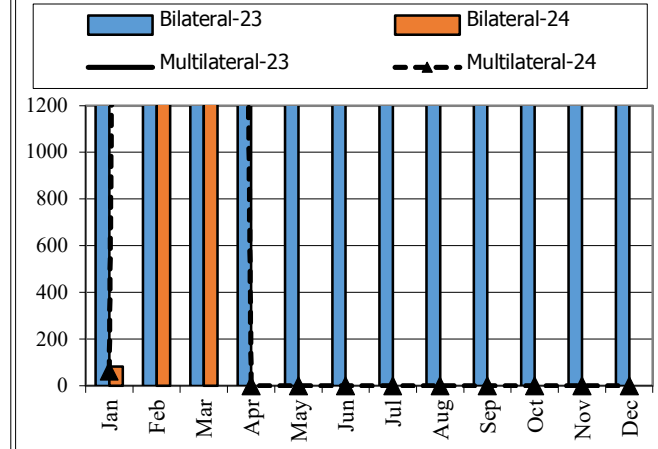
Source: MEF

Defense and Security and Civil Administrative

Expenditure 2023-2024



Multilateral and Bilateral Disbursements 2023-2024



## TABLE OF MINISTRY AND INSTITUTION SPENDING OF 2024

	2024 C.B.L.	Total Act /BL2024	Total Act	Jan-24	Feb-24	Mar-24	Apr-24	May-24	Jun-24	Jul-24	Aug-24	Sep-24	Oct-24	Nov-24	Dec-24
<b>Total Current Expenditures</b>	<b>23,805,838</b>	<b>52.87%</b>	<b>12,585,818</b>	<b>1,881,674</b>	<b>3,914,292</b>	<b>1,187,625</b>	<b>2,644,695</b>	<b>1,202,547</b>	<b>1,754,983</b>						
<b>I. General Administration</b>	<b>2,986,962</b>	<b>64.41%</b>	<b>1,923,998</b>	<b>285,980</b>	<b>138,803</b>	<b>262,755</b>	<b>867,112</b>	<b>183,876</b>	<b>185,472</b>						
01. Royal Palace	92,443	47.90%	44,279	3,264	11,723	7,634	9,919	4,643	7,096						
02. National Assembly	186,793	51.27%	95,772	29,185	8,558	9,445	30,464	8,543	9,578						
03. Senate	86,003	55.53%	47,761	24,628	- 5	14,872	7,345	-	920						
04. Counstitutional Council	16,005	53.92%	8,630	3,189	1,551	-	2,628	1,262	-						
05.1 Council of Minister	523,396	43.31%	226,702	14,155	33,836	48,946	41,528	37,363	50,874						
05.4 CDC	15,234	55.50%	8,455	128	213	997	2,515	4,147	456						
08. Relations Assembly and Inspections	47,495	42.61%	20,239	1,864	3,031	3,234	4,446	3,862	3,802						
09. Foreign Affairs and Int'l Cooperation	193,056	49.48%	95,525	1,071	1,211	31,273	29,252	4,709	28,007						
10. Economy and Finance	1,341,442	88.63%	1,188,950	192,888	44,988	121,215	703,432	82,896	43,531						
14. Planning	92,567	44.59%	41,274	4,125	5,875	6,451	6,894	12,173	5,756						
28. Urbanization and Construction	118,995	40.31%	47,968	3,592	12,417	5,056	10,130	3,845	12,928						
30. National Election Committee	135,785	31.54%	42,821	1,906	4,714	5,449	7,436	10,231	13,084						
31. National Audit Authority	15,313	35.40%	5,420	736	1,434	306	792	985	1,167						
33.1 Anti-corruption Authority	52,549	41.47%	21,792	2,587	5,273	3,017	5,096	2,590	3,229						
34. Public Function	69,886	40.65%	28,411	2,660	3,982	4,861	5,237	6,627	5,044						
<b>April, 2024</b>	<b>5,453,571</b>	<b>44.68%</b>	<b>2,436,495</b>	<b>468,965</b>	<b>388,369</b>	<b>363,349</b>	<b>462,598</b>	<b>357,872</b>	<b>395,342</b>						
06. National Defense	2,934,518	44.38%	1,302,296	198,425	224,353	201,907	249,506	215,637	212,468						
07.1 Interior - Public Security	1,949,325	46.35%	903,432	241,102	120,828	120,384	136,216	123,094	161,808						
07.2 Interior-Administration	353,923	42.86%	151,708	21,733	31,737	31,004	52,913	7,066	7,255						
26. Justice	215,805	36.63%	79,059	7,705	11,450	10,054	23,963	12,075	13,812						
<b>III. Social Administrative</b>	<b>6,574,173</b>	<b>46.22%</b>	<b>3,038,670</b>	<b>553,330</b>	<b>404,488</b>	<b>365,775</b>	<b>648,234</b>	<b>510,851</b>	<b>555,991</b>						
11. Information	90,808	49.42%	44,878	3,562	6,227	7,442	7,434	13,929	6,284						
12. Public Health	1,351,352	30.21%	408,255	12,088	108,225	20,891	79,844	144,771	42,436						
16. Education, Youth and Sport	1,985,733	40.67%	807,542	101,311	122,465	119,866	199,298	123,716	140,886						
18. Culture and Fine-Arts	183,533	50.26%	92,249	4,486	6,629	22,049	11,541	34,198	13,347						
19. Environment	96,946	41.45%	40,185	4,179	5,884	6,096	7,974	7,912	8,139						



## TABLE OF MINISTRY AND INSTITUTION SPENDING OF 2024

	2024 C.B.L.	Total Act /BL2024	Total Act	Jan-24	Feb-24	Mar-24	Apr-24	May-24	Jun-24	Jul-24	Aug-24	Sep-24	Oct-24	Nov-24	Dec-24
21. Social Affair & Veteran	2,314,645	63.52%	1,470,292	414,979	135,729	148,416	302,228	148,003	320,937						
23. Public Worship and Religion	74,278	35.47%	26,345	2,439	3,214	3,279	6,931	5,584	4,899						
24. Woman Affairs	51,067	53.57%	27,356	1,456	4,985	5,226	6,264	4,741	4,684						
32. Labour and Vocational Training	425,811	28.55%	121,566	8,830	11,129	32,512	26,719	27,997	14,380						
<b>IV. Economy Administrative</b>	<b>1,755,970</b>	<b>30.06%</b>	<b>527,866</b>	<b>35,850</b>	<b>67,072</b>	<b>113,869</b>	<b>90,251</b>	<b>111,501</b>	<b>109,323</b>						
05.3 Civil Aviation Secretariate	53,332	34.24%	18,262	2,435	1,828	1,835	1,847	2,527	7,790						
13. Industry, Mines and Energy	74,269	31.91%	23,696	1,750	2,815	3,544	4,025	6,203	5,359						
15. Commerce	132,376	35.09%	46,445	3,632	5,238	7,809	8,937	14,034	6,795						
17. Agriculture, Forestry and Fishery	301,353	44.28%	133,448	10,391	16,439	24,332	21,717	30,802	29,767						
20. Rural Development	210,823	15.66%	33,017	2,791	3,596	4,095	6,900	8,592	7,043						
22. Posts and Telecommunications	163,121	37.55%	61,259	2,267	3,826	27,456	6,714	9,212	11,784						
25. Public Works and Transport	472,529	21.94%	103,680	5,737	21,554	22,742	16,606	18,118	18,923						
27. Tourism	92,131	43.82%	40,376	2,149	3,644	8,489	11,517	7,468	7,109						
29. Water Resources and Meteorology	186,044	23.56%	43,839	2,503	4,445	9,659	7,435	9,633	10,165						
35. Industry and Handicrafts	69,992	34.07%	23,844	2,195	3,686	3,907	4,554	4,913	4,589						
<b>V. Miscellaneous</b>	<b>7,035,162</b>	<b>66.22%</b>	<b>4,658,789</b>	<b>537,549</b>	<b>2,915,561</b>	<b>81,877</b>	<b>576,499</b>	<b>38,447</b>	<b>508,855</b>						
99.Unallocated Expenditure	7,035,162	66.22%	4,658,789	537,549	2,915,561	81,877	576,499	38,447	508,855						

## Report preparation Note



The Implementation of State Budget (TOFE) in June 2024 is compiled based on the preliminary data with the cut-off date as the followings:

- 1.The Revenue Data of the Budgetary Central Government Level (Line Ministries and Line Departments) provided by General Department Of National Treasury (GDNT) and FMIS System
- 2.The Revenue Data of the Local Government Level (Municiple/ Provincial Level) provided by GDNT and FMIS System
- 3.The Expenditure Data of the Budgetary Central Government Level (Line Ministries and Line Departments) provided by GDNT and FMIS System
- 4.The Expenditure Data of the Local Government Level (Municiple/ Provincial Level) provided by GDNT and FMIS System
- 5.The Trail Balance Report of the Budgetary Central Government Level (Line Ministries and Line Departments) provided by GDNT and FMIS System
- 6.The Trail Balance Report of the Local Government Level (Municiple/ Provincial Level) provided by GDNT and FMIS System
- 7.The Loan & Grant Data provided by General Department of International Cooperation and Debt Management (GDICDM)
- 8.The Multilateral & Bilateral Data downloaded from DMFAS System of GDICDM4
- 9.The Credit Bank Operations Data provided by National Bank of Cambodia (NBC)

TOFE report will be updated in the next release of the following month.

