

## State Budget Implementation in May 2019



### Brief Report

Following the latest assessment of macroeconomic performance in early 2019, Cambodia has maintained strong economic growth up to 7.5 percent in 2018 and is projected to grow at a rate of 7.1 percent in 2019 while the inflation has been at manageably low rate coincided with the stability of the exchange rate.

In May 2019, according to the National Treasury preliminary data, the budgetary central government achieved the total domestic revenue of KHR **1,945.15** billion or in equivalent to **9.83** percent against the 2019 budget law, signifying the increased by **23.52** percent compared to the same month in 2018. Of the total domestic revenue, the tax revenue accounted for KHR **1,781.29** and non-tax revenue for KHR **163.48**. As of May 2019, the total domestic revenue has been achieved by KHR **9,460.68** billion or in equivalent to **47.81** percent against the 2019 budget law, marking the increase by **19.90** percent compared to the same period last year. The growth has been mainly attributed to the increase of direct taxes (**14.46** percent), indirect taxes (**21.86** percent), international trade taxes (**21.66** percent), and non-tax revenue (**13.05** percent).

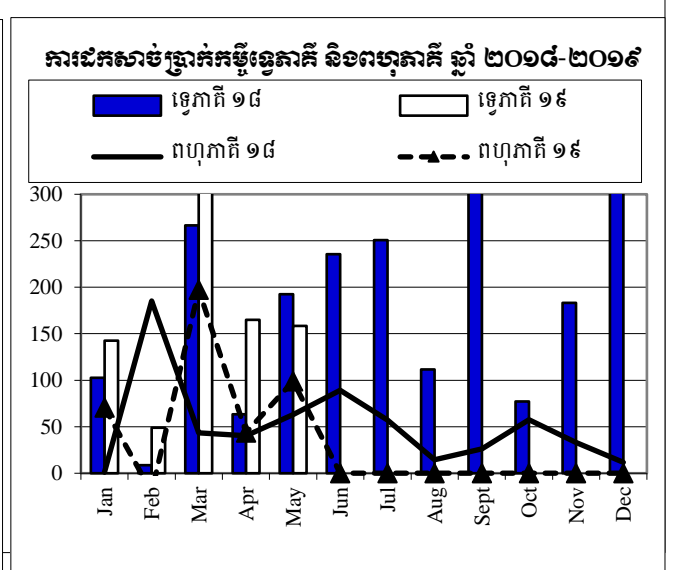
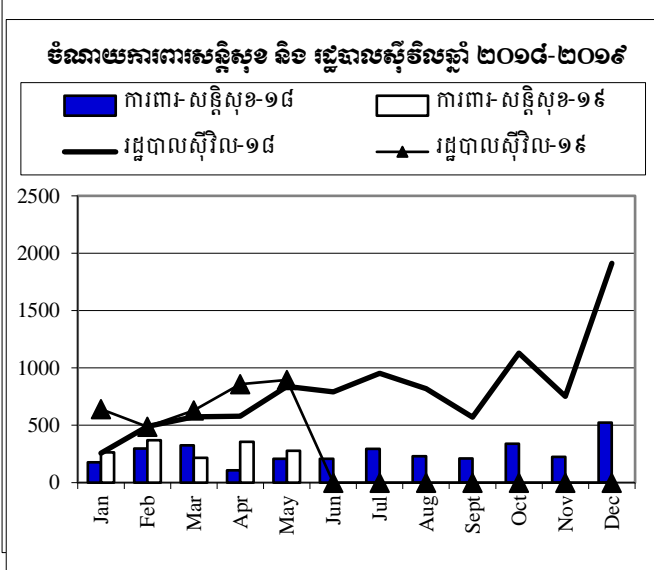
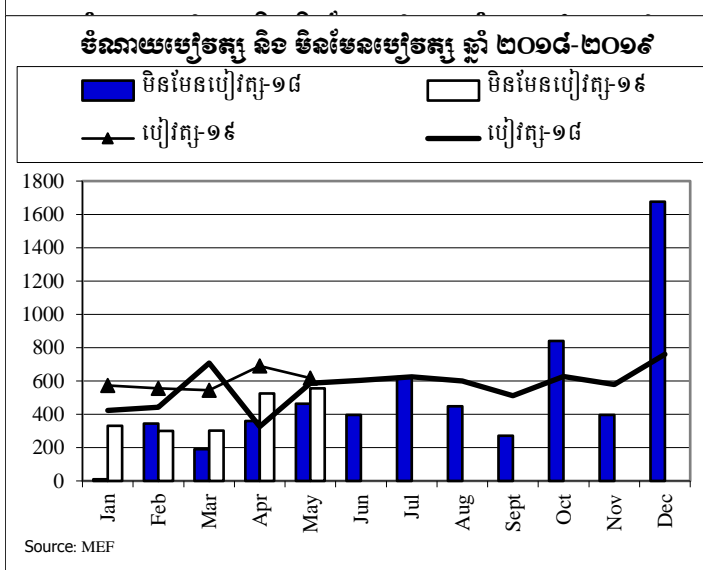
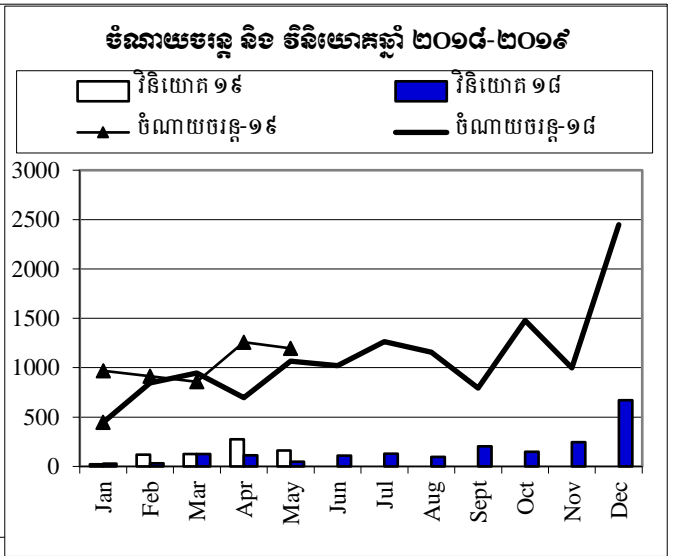
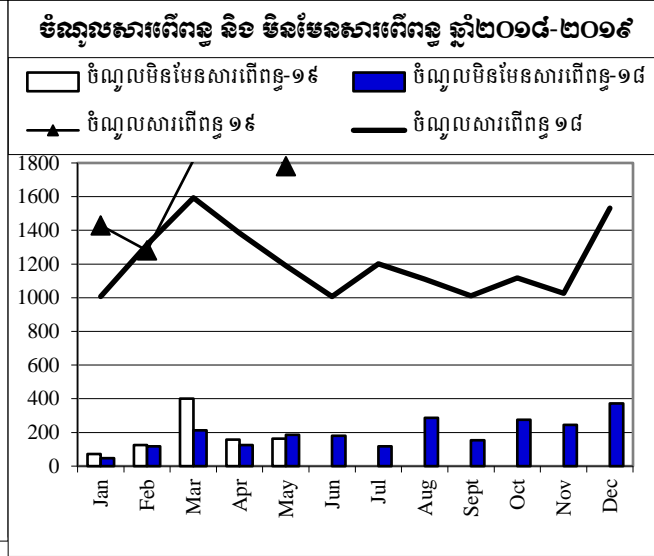
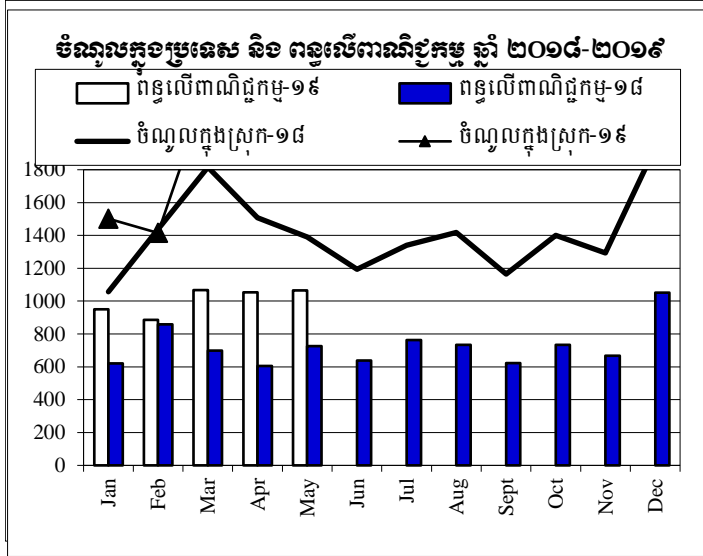
In May 2019, the budgetary central government, on the other hand, executed the total expenditures of KHR **1,703.05** billion or equal to **6.91** percent against the 2019 budget law, significantly increased by **10.16** percent compared to the same month last year. As of May 2019, the total expenditures have been achieved KHR **7,587.63** billion or equal to **30.80** percent against the 2019 budget law, marking the increase by **14.40** percent compared to the same period last year. The current expense execution has reached KHR **5,189.42** billion indicating the increase by **6.84** percent, of which the salary expense and other expenses account for KHR **2,980.95** billion and KHR **2,013.82** billion, respectively.

Based on this preliminary data, in conclusion, the implementation on domestic revenue collection have been well performed reflected by the increasing rate of **19.90** percent while the expenditure execution also increased by **14.40** percent. As a result, the current budget balance has achieved the surplus of KHR **4,152.26** billion and overall budget balance has achieved the surplus of KHR **1,873.04** billion.



# ការប្រៀបធៀបការអនុវត្តវិកា ឆ្នាំ ២០១៨-២០១៩

កិតជា មីលានរៀល



Source: MEF

ការវិនិយោគសាងសង់ស្រូវ ២០១៩ TOFE BUDGET IMPLEMENTATION FOR 2019

គិតជា ម៉ឺលានរៀល

	ច្បាប់ថវិកា ឆ្នាំ ២០១៩	ការអនុវត្ត / ច្បាប់	សរុប ការអនុវត្ត	មករា ១៩	កុម្ភៈ ១៩	មីនា ១៩	មេសា ១៩	ឧសភា ១៩	មិថុនា ១៩	កក្កដា ១៩	សីហា ១៩	កញ្ញា ១៩	តុលា ១៩	វិច្ឆិកា ១៩	ធ្នូ ១៩
<b>I. DOMESTIC REVENUE</b>	<b>19,786.26</b>	<b>47.81%</b>	<b>9,460.68</b>	<b>1,501.25</b>	<b>1,415.25</b>	<b>2,301.27</b>	<b>2,297.76</b>	<b>1,945.15</b>	-	-	-	-	-	-	-
<b>I.CURRENT REVENUE</b>	<b>19,593.11</b>	<b>47.68%</b>	<b>9,341.68</b>	<b>1,501.25</b>	<b>1,405.27</b>	<b>2,219.27</b>	<b>2,271.13</b>	<b>1,944.77</b>	-	-	-	-	-	-	-
<b>a. TAX REVENUE</b>	<b>16,879.00</b>	<b>49.90%</b>	<b>8,422.30</b>	<b>1,429.02</b>	<b>1,280.06</b>	<b>1,817.83</b>	<b>2,114.09</b>	<b>1,781.29</b>	-	-	-	-	-	-	-
<b>Domestic tax revenue</b>	<b>14,468.00</b>	<b>50.63%</b>	<b>7,324.95</b>	<b>1,201.42</b>	<b>1,096.29</b>	<b>1,609.45</b>	<b>1,870.55</b>	<b>1,547.25</b>	-	-	-	-	-	-	-
Direct Tax (income tax, profits tax)	4,330.00	53.16%	2,301.82	250.81	210.61	542.22	816.10	482.07	-	-	-	-	-	-	-
Indirect Tax	10,138.00	49.55%	5,023.13	950.61	885.67	1,067.22	1,054.45	1,065.17	-	-	-	-	-	-	-
o.w/ - Excise Tax on specific goods	900.00	42.49%	382.43	65.09	77.08	70.07	70.05	100.12	-	-	-	-	-	-	-
o.w/ -Special Excise Tax(petroleum,others)	3,152.00	63.30%	1,995.08	380.81	339.66	389.26	440.56	444.79	-	-	-	-	-	-	-
o.w/ - Excise Tax on specific services	85.00	27.16%	23.09	4.57	6.69	4.60	1.66	5.57	-	-	-	-	-	-	-
Other tax revenues	99.50	47.74%	47.50	6.79	6.43	13.21	16.39	4.68	-	-	-	-	-	-	-
<b>Taxes on international trade</b>	<b>2,411.00</b>	<b>45.51%</b>	<b>1,097.35</b>	<b>227.60</b>	<b>183.77</b>	<b>208.39</b>	<b>243.54</b>	<b>234.05</b>	-	-	-	-	-	-	-
Taxes and duties on imports	2,361.00	45.57%	1,075.84	223.07	180.96	203.92	239.48	228.41	-	-	-	-	-	-	-
o.w/ -Customs duties on imports	1,563.00	50.90%	795.62	166.07	129.94	150.32	168.82	180.47	-	-	-	-	-	-	-
-Customs duties on petroleum products	340.00	31.98%	108.73	20.80	20.79	19.28	30.02	17.84	-	-	-	-	-	-	-
-Additional tax on oil product - Road maintenance	342.00	36.05%	123.28	24.35	21.33	17.61	35.56	24.42	-	-	-	-	-	-	-
-Import tax for materials used for medical production	5.50	115.90%	6.37	-	-	6.37	-	-	-	-	-	-	-	-	-
Taxes and duties on exports	50.00	43.01%	21.51	4.53	2.81	4.47	4.06	5.64	-	-	-	-	-	-	-
o.w/-Tax on rubber exports	10.00	53.79%	5.38	0.90	0.41	1.47	1.43	1.17	-	-	-	-	-	-	-
-Tax on export of agricultural products	33.00	31.99%	10.56	2.69	1.58	2.33	2.04	1.92	-	-	-	-	-	-	-
-Tax on export of agricultural products	6.50	80.49%	5.23	0.86	0.77	0.61	0.54	2.45	-	-	-	-	-	-	-
<b>b. NON TAX REVENUE</b>	<b>2,714.11</b>	<b>33.87%</b>	<b>919.39</b>	<b>72.23</b>	<b>125.21</b>	<b>401.44</b>	<b>157.03</b>	<b>163.48</b>	-	-	-	-	-	-	-
<b>State Property Revenue</b>	<b>127.42</b>	<b>150.51%</b>	<b>191.78</b>	<b>3.03</b>	<b>4.38</b>	<b>169.96</b>	<b>9.15</b>	<b>5.26</b>	-	-	-	-	-	-	-
Concession and rental land	106.17	20.14%	21.38	3.02576	4.38	4.06	7.15	2.76	-	-	-	-	-	-	-
Public Enterprises Income	21.25	801.88%	170.40	-	-	165.90	2.00	2.50	-	-	-	-	-	-	-
<b>Income from Sales, Rental of Properties and Services</b>	<b>2,295.83</b>	<b>28.14%</b>	<b>646.08</b>	<b>67.3859</b>	<b>118.66</b>	<b>200.99</b>	<b>123.98</b>	<b>135.07</b>	-	-	-	-	-	-	-
Income of administrative public enterprises -operational services (for profit)	955.98	20.63%	197.19	45.89	49.39	4.41	79.73	17.77	-	-	-	-	-	-	-
Sales of Property of Public Administration	103.67	46.77%	48.49	6.60	9.53	10.37	10.60	11.39	-	-	-	-	-	-	-
Administrative fees	806.24	35.36%	285.12	11.87	52.69	121.19	14.69	84.69	-	-	-	-	-	-	-
Sales of Services	75.10	115.04%	86.39	2.81	2.60	59.99	12.68	8.31	-	-	-	-	-	-	-
Other Rental of immovable properties	322.16	7.09%	22.86	0.06	3.92	4.12	4.29	10.47	-	-	-	-	-	-	-
Other non tax	290.86	28.03%	81.53	1.82	2.16	30.49	23.91	23.15	-	-	-	-	-	-	-
o.w/ Other exceptional revenues	-	...	28.26	1.50	0.14	1.62	20.57	4.42	-	-	-	-	-	-	-
<b>2. CAPITAL REVENUE</b>	<b>193.15</b>	<b>61.61%</b>	<b>118.99</b>	<b>-</b>	<b>9.98</b>	<b>82.00</b>	<b>26.64</b>	<b>0.38</b>	-	-	-	-	-	-	-
Other financial assets	193.15	61.61%	118.99	-	9.98	82.00	26.64	0.38	-	-	-	-	-	-	-

**ការវិនិយោគសាងសង់ស្ថាប័ន ២០១៩ TOFE BUDGET IMPLEMENTATION FOR 2019**

គិតជា ម៉ឺលានរៀល

	ច្បាប់ថវិកា ឆ្នាំ ២០១៩	ការអនុវត្ត /ច្បាប់	សរុប ការអនុវត្ត	មករា ១៩	កុម្ភៈ ១៩	មីនា ១៩	មេសា ១៩	ឧសភា ១៩	មិថុនា ១៩	កក្កដា ១៩	សីហា ១៩	កញ្ញា ១៩	តុលា ១៩	វិច្ឆិកា ១៩	ធ្នូ ១៩
<b>II. BUDGET EXPENDITURE</b>	<b>24,859.08</b>	<b>30.52%</b>	<b>7,587.63</b>	<b>1,290.73</b>	<b>1,149.89</b>	<b>1,612.43</b>	<b>1,831.55</b>	<b>1,703.05</b>	-	-	-	-	-	-	-
<b>I. CURRENT EXPENDITURE</b>	<b>16,827.28</b>	<b>30.84%</b>	<b>5,189.42</b>	<b>967.19</b>	<b>912.30</b>	<b>856.84</b>	<b>1,258.25</b>	<b>1,194.84</b>	-	-	-	-	-	-	-
<b>a. Wages</b>	<b>7,862.54</b>	<b>37.91%</b>	<b>2,980.95</b>	<b>573.79</b>	<b>556.28</b>	<b>544.61</b>	<b>689.91</b>	<b>616.36</b>	-	-	-	-	-	-	-
Personnel charges-civil administrative	4,661.10	36.08%	1,681.84	314.74	299.50	372.02	342.17	353.41	-	-	-	-	-	-	-
o.w/ Diplomatic salary	4.33	41.70%	1.81	0.93	-	0.83	-	0.04	-	-	-	-	-	-	-
Personnel charges-national defence and security	3,201.44	40.58%	1,299.11	259.06	256.78	172.59	347.74	262.95	-	-	-	-	-	-	-
<b>b. Non wage</b>	<b>8,964.74</b>	<b>24.64%</b>	<b>2,208.47</b>	<b>393.40</b>	<b>356.02</b>	<b>312.23</b>	<b>568.33</b>	<b>578.48</b>	-	-	-	-	-	-	-
<b>-Purchases</b>	<b>1,617.94</b>	<b>20.37%</b>	<b>329.63</b>	<b>15.69</b>	<b>128.44</b>	<b>62.38</b>	<b>21.74</b>	<b>101.38</b>	-	-	-	-	-	-	-
Maintenance supplies	283.27	5.78%	16.38	1.94	3.60	4.23	3.45	3.16	-	-	-	-	-	-	-
Administration supplies	232.89	6.04%	14.07	1.13	2.60	4.04	3.77	2.53	-	-	-	-	-	-	-
Food and agricultural products	158.47	42.98%	68.12	-	35.86	30.88	0.25	1.12	-	-	-	-	-	-	-
Clothing and decoration	166.65	3.33%	5.55	3.69	0.09	0.44	0.65	0.68	-	-	-	-	-	-	-
Small tools, material, furniture and equip.	459.90	25.65%	117.95	8.64	81.65	13.07	8.21	6.40	-	-	-	-	-	-	-
Energy and water	165.95	14.73%	24.44	0.29	4.38	9.41	5.01	5.34	-	-	-	-	-	-	-
Health supplies and equipment	147.67	56.20%	82.98	-	0.26	0.31	0.26	82.15	-	-	-	-	-	-	-
Other supplies	3.17	4.18%	0.13	-	-	-	0.13	-	-	-	-	-	-	-	-
<b>-Services</b>	<b>1,730.70</b>	<b>14.71%</b>	<b>254.58</b>	<b>34.97</b>	<b>26.50</b>	<b>64.65</b>	<b>50.71</b>	<b>77.75</b>	-	-	-	-	-	-	-
o.w/ -Rentals and charges (furniture)	23.07	48.98%	11.30	8.02	0.22	1.98	0.46	0.62	-	-	-	-	-	-	-
-Maintenance and repairs	871.27	5.17%	45.06	3.81	2.10	14.92	12.88	11.34	-	-	-	-	-	-	-
<b>-Financial charges</b>	<b>525.09</b>	<b>37.07%</b>	<b>194.65</b>	<b>62.61</b>	<b>55.38</b>	<b>10.32</b>	<b>43.16</b>	<b>23.18</b>	-	-	-	-	-	-	-
o.w/ -Interests on domestic debt	-	...	0.17	-	-	-	-	0.17	-	-	-	-	-	-	-
-Interests on external debt	525.09	31.95%	167.76	62.61	50.12	9.58	38.47	6.98	-	-	-	-	-	-	-
<b>-Social Benefit</b>	<b>1,983.79</b>	<b>35.52%</b>	<b>704.65</b>	<b>72.89</b>	<b>98.49</b>	<b>80.48</b>	<b>186.98</b>	<b>265.80</b>	-	-	-	-	-	-	-
o.w/- Social Security Benefits	868.87	39.96%	347.18	66.59	66.18	37.04	105.66	71.71	-	-	-	-	-	-	-
-Social Assistance to citizens	914.18	34.29%	313.44	4.58	23.71	29.68	70.49	184.98	-	-	-	-	-	-	-
-Social Assistance to social and cultural entities	139.50	30.04%	41.91	1.67	8.08	13.25	10.31	8.59	-	-	-	-	-	-	-
-Other social benefits	11.21	0.00%	-	-	-	-	-	-	-	-	-	-	-	-	-
<b>-Grants</b>	<b>1,552.86</b>	<b>36.31%</b>	<b>563.85</b>	<b>207.11</b>	<b>15.47</b>	<b>82.90</b>	<b>153.77</b>	<b>104.60</b>	-	-	-	-	-	-	-
<b>-Other non wage</b>	<b>1,554.35</b>	<b>10.37%</b>	<b>161.12</b>	<b>0.13</b>	<b>31.75</b>	<b>11.51</b>	<b>111.97</b>	<b>5.76</b>	-	-	-	-	-	-	-
o.w/ -Unanticipated Expense(Reserve)	1,019.01	0.00%	-	-	-	-	-	-	-	-	-	-	-	-	-
-Unexpected expenditures(Others exp.)	50.00	0.00%	-	-	-	-	-	-	-	-	-	-	-	-	-
<b>2. CAPITAL</b>	<b>8,031.80</b>	<b>29.86%</b>	<b>2,398.21</b>	<b>323.53</b>	<b>237.59</b>	<b>755.59</b>	<b>573.30</b>	<b>508.21</b>	-	-	-	-	-	-	-
<b>Domestic Financing</b>	<b>2,708.03</b>	<b>26.08%</b>	<b>706.22</b>	<b>21.63</b>	<b>120.15</b>	<b>125.98</b>	<b>275.99</b>	<b>162.48</b>	-	-	-	-	-	-	-
Intangible Asset	-	...	309.37	21.63	65.01	43.29	144.88	34.56	-	-	-	-	-	-	-
Tangible fixed assets and land	2,708.03	14.65%	396.85	-	55.13	82.69	131.11	127.92	-	-	-	-	-	-	-
<b>External assistance (Project)</b>	<b>5,323.77</b>	<b>31.78%</b>	<b>1,691.99</b>	<b>301.91</b>	<b>117.44</b>	<b>629.61</b>	<b>297.31</b>	<b>345.73</b>	-	-	-	-	-	-	-

តារាងប្រតិបត្តិការហិរញ្ញវត្ថុឆ្នាំ ២០១៩ TOFE BUDGET IMPLEMENTATION FOR 2019

គិតជា ម៉ឺលានរៀល

	ច្បាប់ថវិកា ឆ្នាំ ២០១៩	ការអនុវត្ត /ច្បាប់	សរុប ការអនុវត្ត	មករា ១៩	កុម្ភៈ ១៩	មីនា ១៩	មេសា ១៩	ឧសភា ១៩	មិថុនា ១៩	កក្កដា ១៩	សីហា ១៩	កញ្ញា ១៩	តុលា ១៩	វិច្ឆិកា ១៩	ធ្នូ ១៩
CURRENT DEF/SURPL.comt (I.I-IL1)	2,765.83	150.13%	4,152.26	534.06	492.97	1,362.43	1,012.88	749.93	-	-	-	-	-	-	-
CURRENT DEF/SURPL.cash(comt.+3)	2,765.83	150.13%	4,152.26	534.06	492.97	1,362.43	1,012.88	749.93	-	-	-	-	-	-	-
III. FINANCING	5,072.82	-36.92%	(1,873.04)	(210.52)	(265.36)	(688.85)	(466.22)	(242.10)	-	-	-	-	-	-	-
I. FOREIGN FINANCING	4,667.82	29.88%	1,394.62	269.12	103.10	578.08	172.32	271.99	-	-	-	-	-	-	-
a. Budget support	250.00	0.00%	-	-	-	-	-	-	-	-	-	-	-	-	-
-Grants-budget support	125.00	0.00%	-	-	-	-	-	-	-	-	-	-	-	-	-
Capital Support	125.00	0.00%	-	-	-	-	-	-	-	-	-	-	-	-	-
Bilateral grant for investment expense	125.00	0.00%	-	-	-	-	-	-	-	-	-	-	-	-	-
-Debt and related liabilities-budget support	125.00	0.00%	-	-	-	-	-	-	-	-	-	-	-	-	-
Foreign borrowing	125.00	0.00%	-	-	-	-	-	-	-	-	-	-	-	-	-
Foreign borrowings from multilateral agencies	125.00	0.00%	-	-	-	-	-	-	-	-	-	-	-	-	-
b. Project aid	5,323.77	32.01%	1,703.99	290.75	168.12	621.37	317.20	306.55	-	-	-	-	-	-	-
Spent	5,323.77	31.78%	1,691.99	301.91	117.44	629.61	297.31	345.73	-	-	-	-	-	-	-
-Grants	1,064.75	41.67%	443.65	88.73	88.73	88.73	88.73	88.73	-	-	-	-	-	-	-
Bilateral grant for investment expense	1,064.75	41.67%	443.65	88.73	88.73	88.73	88.73	88.73	-	-	-	-	-	-	-
-Debt and related liabilities	4,259.02	29.31%	1,248.35	213.18	28.71	540.88	208.58	257.00	-	-	-	-	-	-	-
Foreign borrowing	4,259.02	29.31%	1,248.35	213.18	28.71	540.88	208.58	257.00	-	-	-	-	-	-	-
Foreign borrowings from multilateral agencies	4,259.02	9.16%	390.04	70.64	(20.18)	197.18	43.71	98.69	-	-	-	-	-	-	-
Foreign borrowings from bilateral agencies	-	...	858.31	142.54	48.89	343.70	164.87	158.31	-	-	-	-	-	-	-
Pending		...	12.00	(11.16)	50.68	(8.24)	19.89	(39.18)	-	-	-	-	-	-	-
c. Amortization on external debts	(905.95)	...	(309.37)	(21.63)	(65.01)	(43.29)	(144.88)	(34.56)	-	-	-	-	-	-	-
2. DOMESTIC FINANCING	4,050.00	0.17%	6.75	(9.10)	(28.76)	12.60	11.95	20.07	-	-	-	-	-	-	-
a. Net bank financing (monetary survey)	4,050.00	-75.94%	(3,075.74)	(218.76)	(120.71)	(1,478.95)	(1,001.39)	(255.93)	-	-	-	-	-	-	-
- Government's deposits	4,050.00	-75.94%	(3,075.74)	(218.76)	(120.71)	(1,478.95)	(1,001.39)	(255.93)	-	-	-	-	-	-	-
e. \$Acc.-gap between NBC &MEF		...	3,082.49	209.66	91.94	1,491.55	1,013.34	276.00	-	-	-	-	-	-	-
Error		...	0.00	(0.00)	(0.00)	(0.00)	(0.00)	0.00	-	-	-	-	-	-	-
Exchange rate (R/\$)		...		4,011	4,003	4,015	4,050	4,062	-	-	-	-	-	-	-
Provincial revenue	1,476.95	48.39%	714.76	154.85	124.77	241.73	122.55	70.86	-	-	-	-	-	-	-
o.w. provincial tax revenue	1,351.62	38.44%	519.52	119.61	119.24	124.00	119.89	36.78	-	-	-	-	-	-	-
o.w. prov. non-tax revenue	41.52	22.32%	9.27	2.40	1.64	2.25	1.52	1.46	-	-	-	-	-	-	-
o.w. prov. Transfer from central	83.81	221.90%	185.97	32.84	3.89	115.48	1.14	32.62	-	-	-	-	-	-	-
Provincial expenditure	1,148.55	37%	422.88	25.27	60.00	110.20	88.34	139.07	-	-	-	-	-	-	-
o.w. wage and salary	79.01	35%	27.70	1.89	6.76	5.39	7.30	6.37	-	-	-	-	-	-	-
o.w. non-wage	749.84	47%	350.74	20.06	45.51	88.02	77.21	119.93	-	-	-	-	-	-	-
	319.70	14%	44.44	3.32	7.73	16.79	3.84	12.77	-	-	-	-	-	-	-

**ការវិនិយោគប្រតិបត្តិការសេវាសាធារណៈ ២០១៩ TOFE: BUDGET IMPLEMENTATION FOR 2019**

គិតជា មីលានរៀល

	ច្បាប់ថវិកា ឆ្នាំ ២០១៩	ការអនុវត្ត /ច្បាប់	សរុប ការអនុវត្ត	មករា ១៩	កុម្ភៈ ១៩	មីនា ១៩	មេសា ១៩	ឧសភា ១៩	មិថុនា ១៩	កក្កដា ១៩	សីហា ១៩	កញ្ញា ១៩	តុលា ១៩	វិច្ឆិកា ១៩	ធ្នូ ១៩
Provincial Balance	328.39	89%	291.88	129.58	64.77	131.53	34.21	(68.21)	-	-	-	-	-	-	-
Contribution from casino and Lottery	229.02	0%	-	-	-	-	-	-	-	-	-	-	-	-	-
10 Ministry Spending by Program	7,495.38	34.19%	2,562.89	473.81	375.90	410.41	634.62	668.15	-	-	-	-	-	-	-

ថ្ងៃអង្គារ ៤ រោច ខែចេត្រ ឆ្នាំកុរ ឯកស័ក ព.ស. ២៥៦២

រាជធានីភ្នំពេញ ថ្ងៃទី២៣ ខែមេសា ឆ្នាំ២០១៩

**ប្រធាននាយកដ្ឋាន**

**នាយកដ្ឋានស្ថិតិ និងវិភាគសេដ្ឋកិច្ច**

**អគ្គនាយក**

**អគ្គនាយកដ្ឋានការងារសាធារណៈ**

ថ្ងៃអង្គារ ៤ រោច ខែចេត្រ ឆ្នាំកុរ ឯកស័ក ព.ស. ២៥៦២

រាជធានីភ្នំពេញ ថ្ងៃទី២៣ ខែមេសា ឆ្នាំ២០១៩

**ប្រធានការិយាល័យ**

**ស្ថិតិវិភាគសេវាសាធារណៈ**

ចំណាយបច្ចុប្បន្នតាមក្រសួង ឆ្នាំ ២០១៩/ CURRENT BUDGET EXPENDITURE BY MINISTRY 2019

គិតជាលានរៀល

ចំណាយ

	ច្បាប់ថវិកា ឆ្នាំ ២០១៩	ការអនុវត្ត /ច្បាប់	មកពី ១៩	ក្រុម ១៩	មីនា ១៩	មេសា ១៩	ឧសភា ១៩	មិថុនា ១៩	កក្កដា ១៩	សីហា ១៩	កញ្ញា ១៩	តុលា ១៩	វិច្ឆិកា ១៩	ធ្នូ ១៩
<b>Total Current Expenditures</b>	<b>16,827,280</b>	<b>30.8%</b>	<b>5,189,422</b>	<b>967,193</b>	<b>912,301</b>	<b>856,840</b>	<b>1,258,249</b>	<b>1,194,839</b>						
<b>I. General Administration</b>	<b>2,451,824</b>	<b>55.5%</b>	<b>1,361,369</b>	<b>421,718</b>	<b>161,009</b>	<b>223,460</b>	<b>374,709</b>	<b>180,474</b>						
01. Royal Palace	98,414	37.1%	36,484	2,679	8,067	8,394	8,836	8,508						
02. National Assembly	183,783	52.7%	96,809	50,998	-	45,811	-	-						
03. Senate	87,233	52.0%	45,374	25,936	-	492	18,959	14						
04. Counstitutional Council	11,523	58.5%	6,738	4,054	-	2,676	-	8						
05.1 Council of Minister	415,409	23.5%	97,445	4,315	19,333	25,233	19,038	29,526						
05.4 CDC	15,430	8.3%	1,279	83	83	194	106	814						
07.2 Interior-Administration	206,039	36.2%	74,588	20,211	11,081	20,571	10,624	12,101						
08. Relations Assembly and Inspections	41,556	26.0%	10,809	1,425	1,684	3,021	1,826	2,853						
09. Foreign Affairs and Int'l Cooperation	148,849	34.0%	50,563	15,283	10,425	11,073	7,135	6,648						
10. Economy and Finance	796,115	104.9%	835,314	281,764	94,235	83,648	283,925	91,740						
14. Planning	91,138	30.3%	27,586	3,980	5,758	6,082	5,782	5,986						
28. Urbanization and Construction	162,996	16.2%	26,433	4,083	5,174	6,251	5,570	5,353						
30. National Election Committee	79,059	22.5%	17,804.75	1,708	1,164	2,386	3,835	8,711						
31. National Audit Authority	14,905	24.2%	3,602	639	646	710	643	964						
33.1 Anti-corruption Authority	45,856	34.3%	15,725	1,871	2,069	4,380	4,674	2,732						
34. Public Function	53,519	27.7%	14,816	2,687	1,291	2,539	3,756	4,542						
<b>II. Defense and Security</b>	<b>4,057,518</b>	<b>36.5%</b>	<b>1,483,004</b>	<b>264,367</b>	<b>369,883</b>	<b>215,673</b>	<b>356,646</b>	<b>276,436</b>	<b>-</b>	<b>-</b>	<b>-</b>	<b>-</b>	<b>-</b>	<b>-</b>
06. National Defense	2,416,438	37.2%	899,413	165,203	191,730	200,307	168,913	173,260						
07.1 Interior - Public Security	1,490,709	36.8%	548,047	93,857	171,085	7,233	181,150	94,722						
26. Justice	150,371	23.6%	35,545	5,307	7,068	8,133	6,583	8,454						
<b>III. Social Administrative</b>	<b>6,196,796</b>	<b>32.6%</b>	<b>2,020,132</b>	<b>249,944</b>	<b>332,598</b>	<b>346,405</b>	<b>450,090</b>	<b>641,095</b>	<b>-</b>	<b>-</b>	<b>-</b>	<b>-</b>	<b>-</b>	<b>-</b>
11. Information	85,179	37.5%	31,976	2,707	5,925	3,295	11,104	8,946						
12. Public Health	1,545,525	34.2%	528,722	32,093	36,258	53,936	95,658	310,777						
16. Education, Youth and Sport	2,949,604	31.8%	937,578	127,721	196,017	204,127	202,965	206,749						
18. Culture and Fine-Arts	180,146	15.3%	27,541	3,235	3,766	4,659	5,981	9,900						
19. Environment	89,742	22.1%	19,816	3,162	4,061	4,382	3,893	4,319						
21. Social Affair & Veteran	993,071	40.0%	396,916	71,060	72,741	52,751	116,325	84,039						
23. Public Worship and Religion	68,706	24.2%	16,593	2,528	3,169	3,830	3,520	3,547						
24. Woman Affairs	50,888	25.3%	12,871	1,776	2,138	2,879	3,195	2,883						
32. Labour and Vocational Training	233,936	20.6%	48,118	5,662	8,524	16,546	7,449	9,936						
<b>IV. Economy Administrative</b>	<b>1,506,888</b>	<b>18.8%</b>	<b>282,543</b>	<b>31,164</b>	<b>40,853</b>	<b>65,832</b>	<b>59,282</b>	<b>85,411</b>	<b>-</b>	<b>-</b>	<b>-</b>	<b>-</b>	<b>-</b>	<b>-</b>
05.3 Civil Aviation Secretariate	55,812	13.2%	7,390	1,144	1,197	1,173	1,206	2,670						
13. Industry, Mines and Energy	56,764	17.0%	9,659	1,324	1,870	2,245	2,270	1,950						
15. Commerce	148,168	21.1%	31,192	5,226	3,910	7,787	5,349	8,920						
17. Agriculture, Forestry and Fishery	264,924	25.6%	67,938	8,726	11,533	17,078	11,233	19,370						
20. Rural Development	183,295	9.2%	16,827	2,244	3,457	3,441	4,171	3,513						
22. Posts and Telecommunications	73,964	40.1%	29,676	1,613	2,443	2,847	3,056	19,716						
25. Public Works and Transport	409,345	13.2%	53,948	5,593	7,186	15,649	15,038	10,483						
27. Tourism	98,065	32.8%	32,144	1,645	3,982	5,798	9,733	10,986						
29. Water Resources and Meteorology	159,188	13.0%	20,691	2,134	3,027	6,757	3,259	5,514						
35. Industry and Handicrafts	57,363	22.8%	13,079	1,516	2,250	3,058	3,967	2,288						
<b>V. Miscellaneous</b>	<b>2,614,254</b>	<b>1.6%</b>	<b>42,374</b>	<b>-</b>	<b>7,958</b>	<b>5,470</b>	<b>17,523</b>	<b>11,424</b>	<b>-</b>	<b>-</b>	<b>-</b>	<b>-</b>	<b>-</b>	<b>-</b>
99.Unexpect Expenditure	2,614,254	1.6%	42,374	-	7,958	5,470	17,523	11,424						

## NOTE



TOFE report was issued based on temporary data as following:

1. Data on Revenue at National level was received on June 4, 2019
2. Data on Expenditure at National Level was received on June 13, 2019
3. Data on Loan and Grant of multilateral and bilateral was retrieved on June y 13, 2019
4. Financial Operation Data (Credit Bank) was received on June 3, 2019

TOFE report will be updated in the next released.

