

Brief Report
On
State Budget Implementation in January 2017



I. Introduction

In early 2017, Cambodian economic activities remained robust under the ongoing reform of the national policy. Overall, tourism, garment and investment sector continued to grow in this early 2017. Whereas, fiscal consolidation has expanded with increase in revenue collection and efficient expenditure by programme budgeting implementation.

II. Revenue Performance

In January 2017, Central government has achieved total domestic revenue of KHR 1,036.58 billion, which accounted for 1,71 percent lower than the budget law or increased by 20.77 percent compared to January 2016, in which the revenue collection from General Department of Taxation increased by 57.13 percent and General Department of Custom and Excise increased by 0.61 percent.

Total tax revenue has reached KHR 991.81 billion, grew by 24.28 percent compared to January 2016, of which direct tax and indirect tax has increased 61.34% and 22.15%, respectively. The tax revenue growth is contributed by the increase of income tax, profit tax, VAT, and excise.

III. Expenditure Performance

In January 2017, expenditure of central government has achieved KHR 503.56 billion, which accounted for 5.75% lower than the budget law or decreased by 25.21 percent compared to January 2016 due to the slow disbursement of both current and capital expenditure. Total current expenditure has reached KHR 445.59 billion, dropped by 23.34 percent compared to January 2016, of which expenditure on security and defense and expenditure on civil administration dropped by 25.69 percent and 19.06 percent, respectively. Whereas, capital expenditure has achieved KHR 57.97 billion, decreased by 37 percent compared to January 2016.

In January 2017, the current budget balance has achieved surplus of KHR 520.12 billion and overall budget balance has achieved surplus of KHR 462.15 billion.

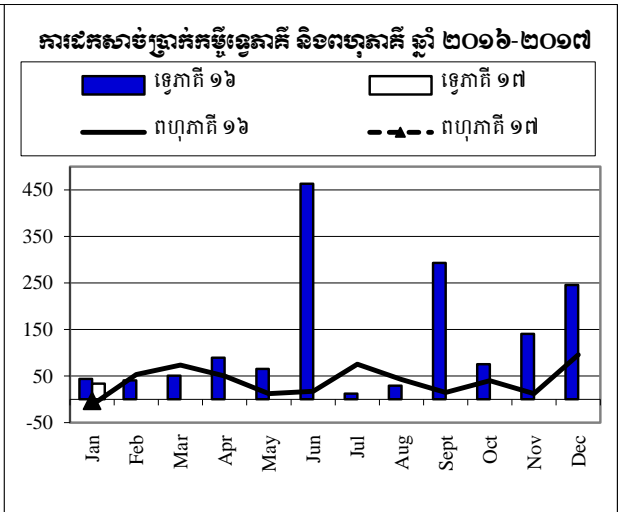
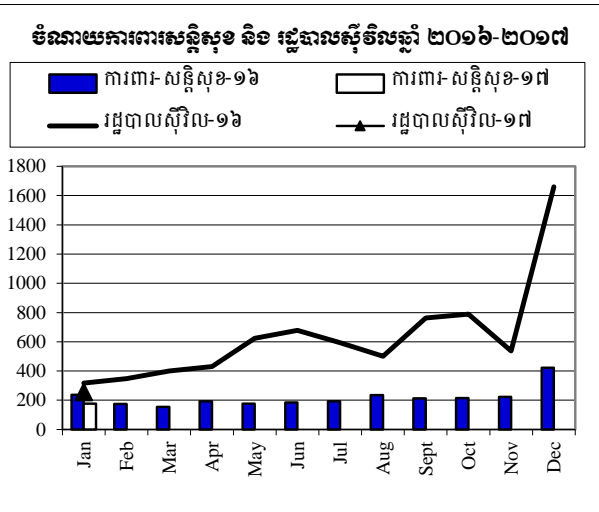
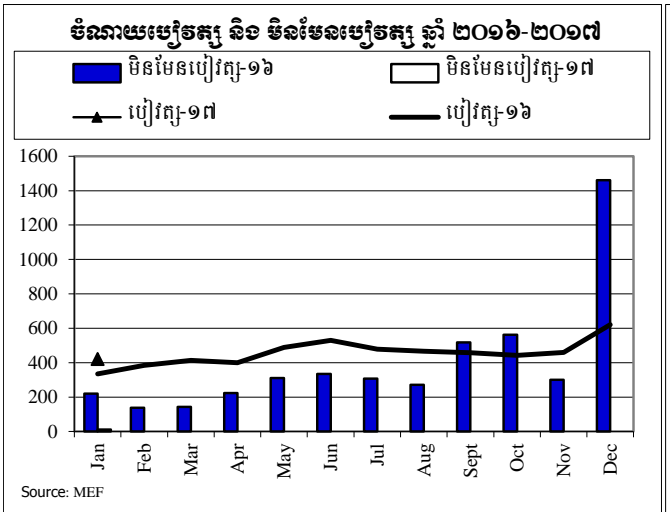
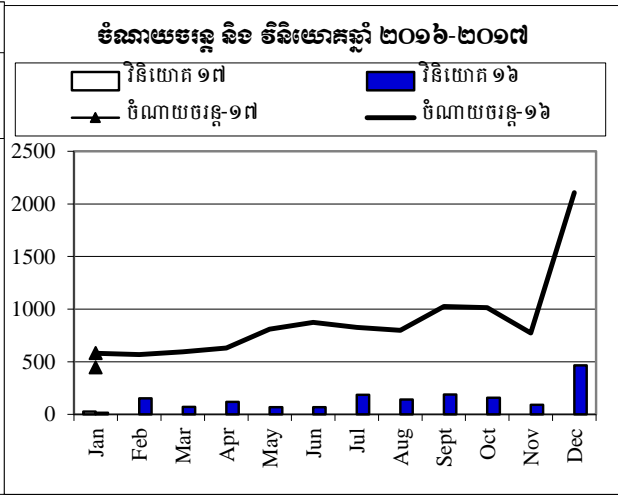
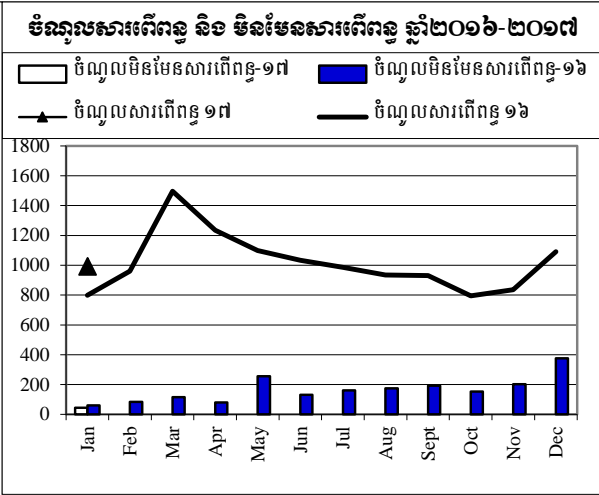
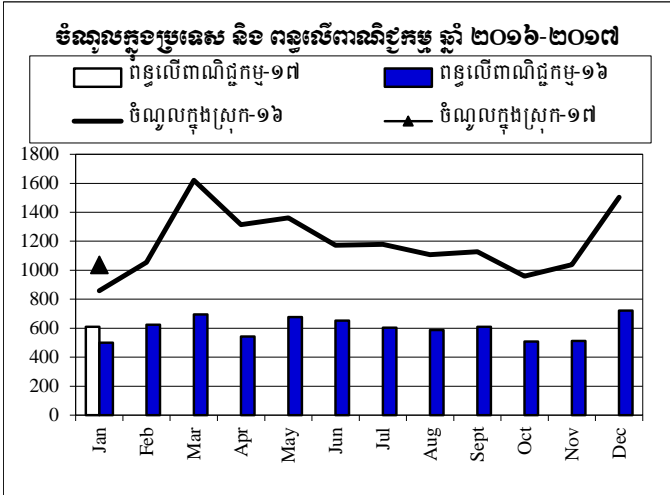
IV. Conclusion

In early 2017, the Ministry of Economy and Finance has well managed the budget implementation, particularly the good enforcement of Revenue Mobilization Strategy to achieve higher revenue as planned.



ការប្រៀបធៀបចំណូល និង ចំណាយ ឆ្នាំ ២០១៦-២០១៧

ភិក្ខុជា ម៉ែនាណូរ៉េល



តារាងប្រតិបត្តិការហិរញ្ញវត្ថុឆ្នាំ ២០១៧ TOFE: BUDGET IMPLEMENTATION FOR 2017

Description (Billions of Riels)	2017 C.B.L.	Implementation 1 month =8.33%	Jan-17	Feb-17	Mar-17	Apr-17	May-17	Jun-17	Jul-17	Aug-17	Sep-17	Oct-17	Nov-17	Dec-17
Foreign borrowings from multilateral agencies	3,684.72	-0.08%	(2.95)	(2.95)	-	-	-	-	-	-	-	-	-	-
Foreign borrowings from bilateral agencies	-		33.61	33.61	-	-	-	-	-	-	-	-	-	-
Pending			24.22	24.22										
c. Amortization on external debts	(665.51)	1.43%	(9.49)	(9.49)	-	-	-	-	-	-	-	-	-	-
2. DOMESTIC FINANCING	-	#DIV/0!	(352.80)	(352.80)										
a. Net bank financing (monetary survey)	-	#DIV/0!	(7.22)	(7.22)	-	-	-	-	-	-	-	-	-	-
- Government's deposits		#DIV/0!	(7.22)	(7.22)										
d. Private sectors	-		(332.26)	(332.26)	-	-	-	-	-	-	-	-	-	-
- Individual acct. & security deposits			(332.26)	(332.26)										
e. \$Acc.-gap between NBC &MEF			(13.32)	(13.32)										
3. OUTSTANDING OPERATIONS			(154.73)	(154.73)										
Error			0.00	0.00	-	-	-	-	-	-	-	-	-	-
Memorandum Item :			-											
Exchange rate (R/\$)				4,035	4,004	-	-	-	-	-	-	-	-	-
Provincial revenue	-	#DIV/0!	45.82	45.82	-	-	-	-	-	-	-	-	-	-
o.w. provincial tax revenue	-	#DIV/0!	43.08	43.08	-	-	-	-	-	-	-	-	-	-
o.w. prov. non-tax revenue	-	#DIV/0!	2.34	2.34	-	-	-	-	-	-	-	-	-	-
o.w. prov. Transfer from central	-	#DIV/0!	0.41	0.41	-	-	-	-	-	-	-	-	-	-
Provincial Balance			45.82	45.82	-	-	-	-	-	-	-	-	-	-
Contribution from casino and Lottery			5.17	5.17	-	-	-	-	-	-	-	-	-	-
10 Ministry Spending by Program	5,394.27	2.72%	146.49	146.49	-	-	-	-	-	-	-	-	-	-

ភ្នំពេញ ថ្ងៃទី ខែមេសា ឆ្នាំ ២០១៧

**អគ្គនាយក នៃអគ្គនាយកដ្ឋាន
គោលនយោបាយសេដ្ឋកិច្ច និងហិរញ្ញវត្ថុសាធារណៈ**

ប្រធាននាយកដ្ឋានស្តីពី

**ប្រធានការិយាល័យ
ស្តីពីហិរញ្ញវត្ថុសាធារណៈ**

ហង់ ច័ន្ទ



General Department of Economics and Public Finance Policy

Statistic Department

Government Finance Statistics Report (GFS)

STATISTICAL TABLES

Level of government:
Units of currency / Year ending:

Budgetary Central Government

Millions of Riels, Fiscal year ends December 31

**Nature of the data and
accounting method:**

	Budgetary central government	Extra- budgetary units	Social security funds	Central government	State governments	Local governments	NFPCs
Final							
Preliminary	x						
Forecast							
C or A?	Non-Cash						

Note:
*C to indicate cash
data and*

Non-Cash

Statement I: Statement of Government Operations
Table 1: Revenue
Table 2: Expense
Table 3: Transactions in Assets and Liabilities

Reference: *Government Finance Statistics Manual 2001 (GFSM 2001)*

តារាងប្រតិបត្តិការហិរញ្ញវត្ថុរដ្ឋាភិបាល

គិតជាលានរៀល

Statement of Government Operations

Million Riels

តារាងប្រតិបត្តិការហិរញ្ញវត្ថុរដ្ឋាភិបាល

STATEMENT OF GOVERNMENT OPERATIONS	2017	BL 2017	% of BL2017	Jan-17	Feb-17	Mar-17	Apr-17	May-17	Jun-17	Jul-17	Aug-17	Sep-17	Oct-17	Nov-17	Dec-17
Accounting method:	Non Cash	Non Cash	Non Cash	Non Cash	Non Cash	Non Cash	Non Cash	Non Cash	Non Cash	Non Cash	Non Cash	Non Cash	Non Cash	Non Cash	Non Cash
TRANSACTIONS AFFECTING NET WORTH:															
A1 Revenue	1,036,580	16,189,307.0	6.40%	1,036,579.9	0.0	0.0	0.0	0.0	0.0	0.0	0.0	0.0	0.0	0.0	0.0
A11 Taxes	993,255	13,386,180.1	7.42%	993,255.0	0.0	0.0	0.0	0.0	0.0	0.0	0.0	0.0	0.0	0.0	0.0
A12 Social contributions	-	0.0		0.0	0.0	0.0	0.0	0.0	0.0	0.0	0.0	0.0	0.0	0.0	0.0
A13 Grants	237	687,838.0	0.03%	237.1	0.0	0.0	0.0	0.0	0.0	0.0	0.0	0.0	0.0	0.0	0.0
A14 Other revenue	43,088	2,115,288.9	2.04%	43,087.9	0.0	0.0	0.0	0.0	0.0	0.0	0.0	0.0	0.0	0.0	0.0
A2 Expense	445,342	12,262,844.6	3.63%	445,341.9	0.0	0.0	0.0	0.0	0.0	0.0	0.0	0.0	0.0	0.0	0.0
A21 Compensation of employees	361,405	6,041,355.5	5.98%	361,405.3	0.0	0.0	0.0	0.0	0.0	0.0	0.0	0.0	0.0	0.0	0.0
A22 Use of goods and services	5,386	2,847,163.0	0.19%	5,386.1	0.0	0.0	0.0	0.0	0.0	0.0	0.0	0.0	0.0	0.0	0.0
A23 Consumption of fixed capital	-	0.0		0.0	0.0	0.0	0.0	0.0	0.0	0.0	0.0	0.0	0.0	0.0	0.0
A24 Interest	11,940	342,294.0	3.49%	11,939.6	0.0	0.0	0.0	0.0	0.0	0.0	0.0	0.0	0.0	0.0	0.0
A25 Subsidies	-	10,920.0	0.00%	0.0	0.0	0.0	0.0	0.0	0.0	0.0	0.0	0.0	0.0	0.0	0.0
A26 Grants	204	1,116,697.4	0.02%	203.9	0.0	0.0	0.0	0.0	0.0	0.0	0.0	0.0	0.0	0.0	0.0
A27 Social benefits	62,973	1,297,286.7	4.85%	62,973.1	0.0	0.0	0.0	0.0	0.0	0.0	0.0	0.0	0.0	0.0	0.0
A28 Other expense	3,434	607,128.0	0.57%	3,434.0	0.0	0.0	0.0	0.0	0.0	0.0	0.0	0.0	0.0	0.0	0.0
GOB Gross operating balance (1-2+23+NOBz)	591,238	3,926,462.4	15.06%	591,238.0	0.0	0.0	0.0	0.0	0.0	0.0	0.0	0.0	0.0	0.0	0.0
NOB Net operating balance (1-2+NOBz)^{cl}	591,238	3,926,462.4	15.06%	591,238.0	0.0	0.0	0.0	0.0	0.0	0.0	0.0	0.0	0.0	0.0	0.0
TRANSACTIONS IN NONFINANCIAL ASSETS:															
A31 Net Acquisition of Nonfinancial Assets	58,223	6,748,672.9	0.86%	58,223.1	0.0	0.0	0.0	0.0	0.0	0.0	0.0	0.0	0.0	0.0	0.0
A311 Fixed assets	58,223	6,748,672.9	0.86%	58,223.1	0.0	0.0	0.0	0.0	0.0	0.0	0.0	0.0	0.0	0.0	0.0
A312 Change in inventories	-	0.0		0.0	0.0	0.0	0.0	0.0	0.0	0.0	0.0	0.0	0.0	0.0	0.0
A313 Valuables	-	0.0		0.0	0.0	0.0	0.0	0.0	0.0	0.0	0.0	0.0	0.0	0.0	0.0
A314 Nonproduced assets	-	0.0		0.0	0.0	0.0	0.0	0.0	0.0	0.0	0.0	0.0	0.0	0.0	0.0
NLB Net lending / borrowing (1-2+NOBz-31)	533,015	-2,822,210.5	-18.89%	533,014.9	0.0	0.0	0.0	0.0	0.0	0.0	0.0	0.0	0.0	0.0	0.0
TRANSACTIONS IN FINANCIAL ASSETS AND LIABILITIES (FINANCING):															
A32 Net acquisition of financial assets	292,452	-148,431.0	-197.03%	292,451.6	0.0	0.0	0.0	0.0	0.0	0.0	0.0	0.0	0.0	0.0	0.0
A321 Domestic	292,452	-148,431.0	-197.03%	292,451.6	0.0	0.0	0.0	0.0	0.0	0.0	0.0	0.0	0.0	0.0	0.0
A322 Foreign	-	0.0		0.0	0.0	0.0	0.0	0.0	0.0	0.0	0.0	0.0	0.0	0.0	0.0
A33 Net incurrence of liabilities	(371,070)	3,181,205.0	-11.66%	-371,069.9	0.0	0.0	0.0	0.0	0.0	0.0	0.0	0.0	0.0	0.0	0.0
A331 Domestic	(416,453)	0.0		-416,453.0	0.0	0.0	0.0	0.0	0.0	0.0	0.0	0.0	0.0	0.0	0.0
A332 Foreign	45,383	3,181,205.0	1.43%	45,383.1	0.0	0.0	0.0	0.0	0.0	0.0	0.0	0.0	0.0	0.0	0.0

NOTE



TOFE was issued based on temporary data as following:

1. Data on Revenue at National and Sub-national level was received on March 3, 2017
2. Data on Expenditure at National Level and Sub-national level was received on March 10, 2017
3. Data on Central Balance was received on March 24, 2017
4. Data on Provincial Balance was received on March 13, 2017
5. Data on Loan and grant both Multilateral and Bilateral was retrieved on March 21, 2017
6. Financial Operation Data (Credit Bank) was received on February 21, 2017

TOFE report will be updated in the next released report.

