

**Brief Report**  
**On**  
**State Budget Implementation in May 2018**



**I. Introduction**

In the early 5 months of 2018, Cambodia's macroeconomic conditions remain stable supported by stable exchange rate and manageable inflation rate. With momentum growth and favorable macroeconomic management, fiscal consolidation has been improved substantially given the current administrative reforms, the implementation of Revenue Mobilization Strategy and Public Financial Reform Management Programme.

**II. Revenue Performance**

According to National Treasury preliminary data, in May 2018, Central government has achieved total domestic revenue of KHR 1,567.93 billion, increased by 12.7 percent compared to May 2017, supported by direct tax, indirect tax, and international trade tax.

Overall, as of May 2018, Central government has achieved total domestic revenue of KHR 7,857.87 billion, accounted for 44.5 percent of budget law or rose by 9 percent compared to the same period in 2017, in which indirect tax revenue increased by 18.3 percent, international trade tax revenue rose by 18.4 percent and non-tax revenue rose by 7.2 percent, respectively. This momentum increase in revenue collection reflects the efficiency and effectiveness of current reform on Revenue collection administration which focuses on strengthening taxpayer registration, auditing, strengthening civil service delivery to taxpayers, anti-smuggling efforts, and modernizing tax and custom administration.

**III. Expenditure Performance**

According to National Treasury preliminary data, as of May 2018, total expenditure of central government has reached KHR 6,403.85 billion, accounted for 28 percent of the budget law, in which total current expenditure has achieved KHR 4,857 billion, accounted for 31.6% of the budget law or grew by 21.5 percent compared to 2017. This expenditure has shown to have

better performance than that of the previous year which reflects the improvement of the spending procedures and clearer understanding of the procedures and guidelines.

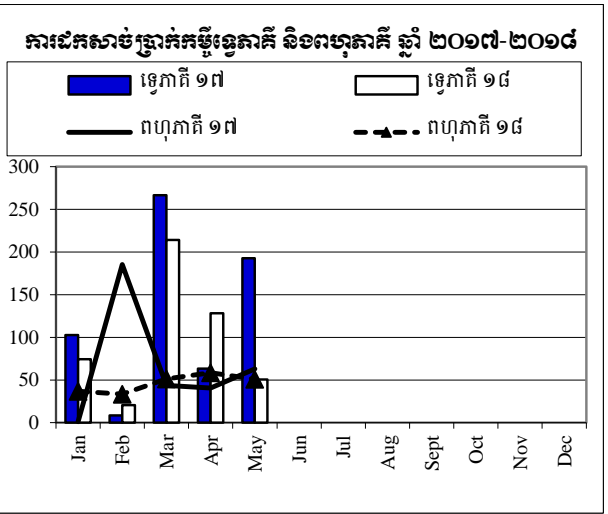
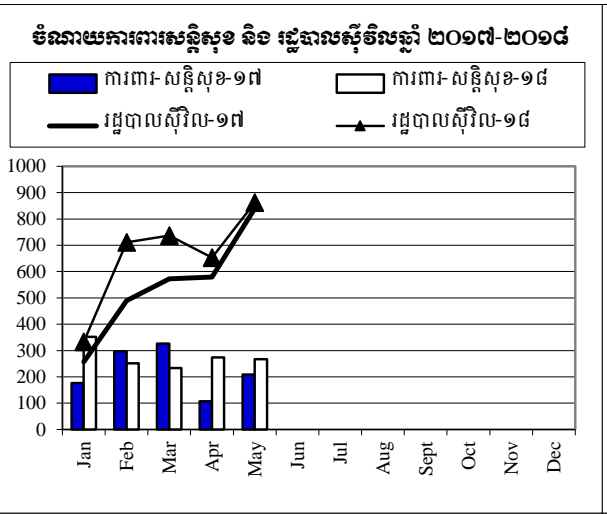
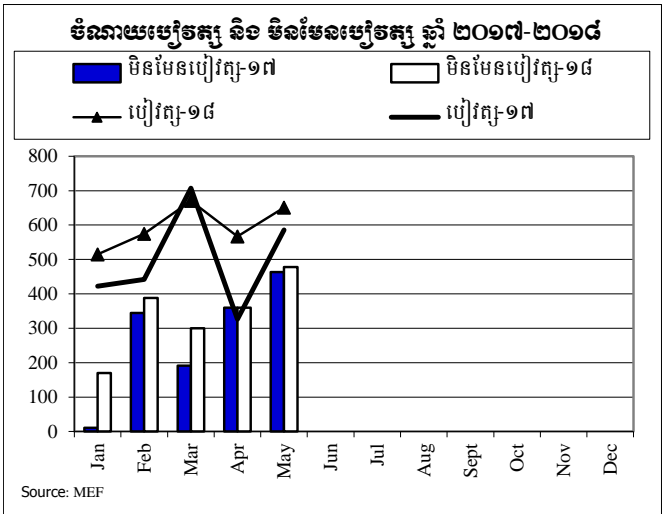
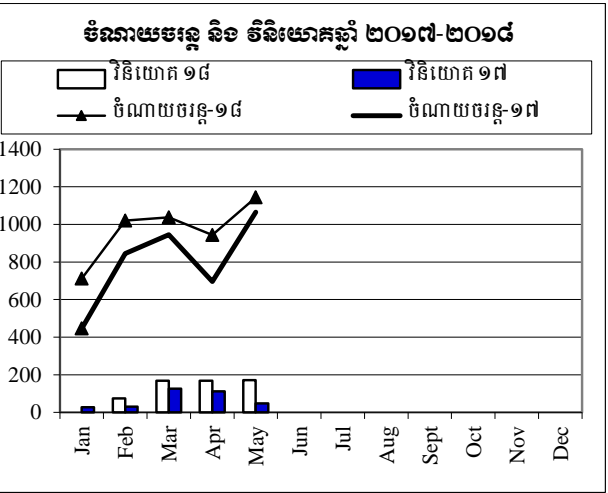
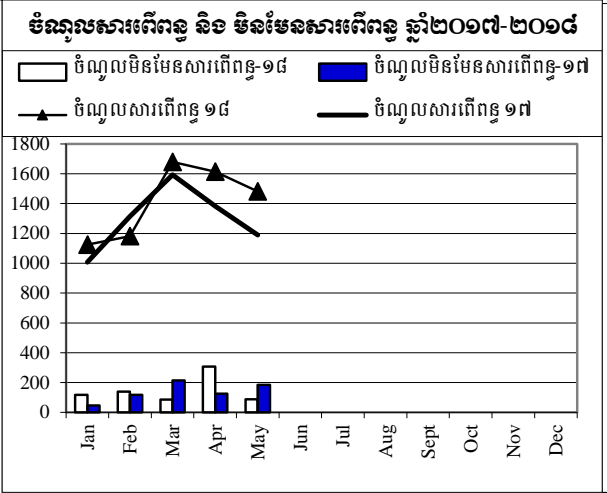
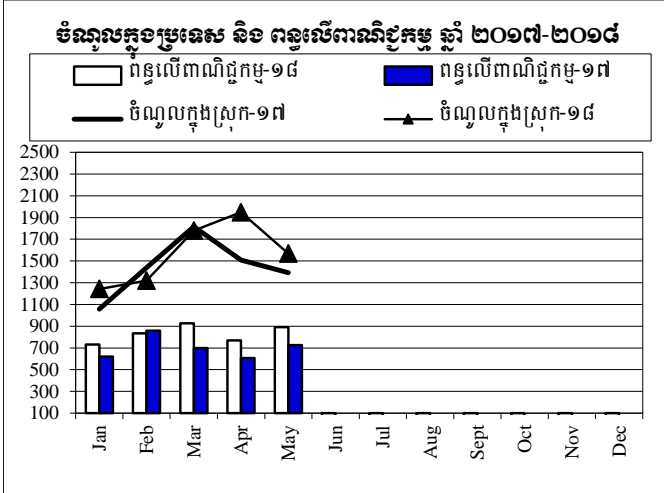
#### **IV. Conclusion**

In all, as of May 2018, the current budget balance has achieved surplus of KHR 2,959.16 billion and overall budget balance has achieved surplus of KHR 1,454.03 billion. The improvement of budget implementation is driven by the concerted efforts from the Ministry of Finance in strictly implementing Revenue Mobilization Strategy and Public Finance Management Reform Programme to ensure growth in revenue mobilization and ensure efficient spending.



# ការប្រៀបធៀបការអនុវត្តវិកា ឆ្នាំ ២០១៧-២០១៨

ភិក្ខុវិស័យ មីនាមរ



ការងារប្រតិបត្តិការហិរញ្ញវត្ថុឆ្នាំ ២០១៨ TOFE: BUDGET IMPLEMENTATION FOR 2018

Billions of Riels	2018 C.B.L.	Implementation		Jan-18	Feb-18	Mar-18	Apr-18	May-18	Jun-18	Jul-18	Aug-18	Sep-18	Oct-18	Nov-18	Dec-18
		5 months =41.7%													
<b>I. DOMESTIC REVENUE</b>	<b>17,640.20</b>	<b>44.55%</b>	<b>7,857.87</b>	<b>1,242.09</b>	<b>1,320.37</b>	<b>1,778.97</b>	<b>1,948.52</b>	<b>1,567.93</b>	-	-	-	-	-	-	-
<b>I.CURRENT REVENUE</b>	<b>17,460.01</b>	<b>44.77%</b>	<b>7,816.16</b>	<b>1,242.09</b>	<b>1,320.37</b>	<b>1,766.08</b>	<b>1,919.68</b>	<b>1,567.93</b>	-	-	-	-	-	-	-
<b>a. TAX REVENUE</b>	<b>15,075.56</b>	<b>46.96%</b>	<b>7,080.22</b>	<b>1,124.80</b>	<b>1,181.52</b>	<b>1,679.55</b>	<b>1,613.44</b>	<b>1,480.91</b>	-	-	-	-	-	-	-
<b>Domestic tax revenue</b>	<b>12,934.06</b>	<b>47.66%</b>	<b>6,164.60</b>	<b>966.94</b>	<b>1,010.41</b>	<b>1,493.22</b>	<b>1,438.20</b>	<b>1,255.84</b>	-	-	-	-	-	-	-
Direct Tax (income tax, profits tax)	3,899.30	51.57%	2,010.71	234.80	176.19	567.84	667.47	364.41	-	-	-	-	-	-	-
Indirect Tax	9,034.76	45.98%	4,153.89	732.14	834.22	925.38	770.72	891.43	-	-	-	-	-	-	-
o.w/ - Excise Tax on specific goods	729.00	48.65%	354.65	80.22	110.98	68.14	50.16	45.16	-	-	-	-	-	-	-
o.w/ -Special Excise Tax(petroleum,others)	3,165.00	51.56%	1,631.92	269.00	316.53	358.74	311.75	375.90	-	-	-	-	-	-	-
Other tax revenues	98.50	43.04%	42.39	4.06	11.74	8.84	9.72	8.03	-	-	-	-	-	-	-
<b>Taxes on international trade</b>	<b>2,141.50</b>	<b>42.76%</b>	<b>915.62</b>	<b>157.86</b>	<b>171.12</b>	<b>186.33</b>	<b>175.24</b>	<b>225.06</b>	-	-	-	-	-	-	-
Taxes and duties on imports	2,095.70	42.69%	894.72	150.37	167.29	182.93	172.82	221.30	-	-	-	-	-	-	-
o.w/ -Customs duties on imports	1,450.00	42.09%	610.33	121.16	110.13	124.76	109.90	144.40	-	-	-	-	-	-	-
-Customs duties on petroleum products	220.00	43.77%	96.28	8.94	16.01	18.56	22.68	30.10	-	-	-	-	-	-	-
-Import tax for materials used for medical production	2.20	40.02%	0.88	-	-	0.88	-	-	-	-	-	-	-	-	-
Taxes and duties on exports	45.80	45.63%	20.90	7.49	3.83	3.40	2.42	3.76	-	-	-	-	-	-	-
o.w/-Tax on rubber exports	10.00	63.29%	6.33	3.30	1.45	0.84	0.42	0.32	-	-	-	-	-	-	-
-Tax on export of agricultural products	33.00	31.00%	10.23	3.47	1.85	1.74	1.02	2.14	-	-	-	-	-	-	-
o.w/-Tax on export of agricultural products	2.30	173.99%	4.00	0.69	0.49	0.64	0.93	1.25	-	-	-	-	-	-	-
<b>b. NON TAX REVENUE</b>	<b>2,384.44</b>	<b>30.86%</b>	<b>735.94</b>	<b>117.29</b>	<b>138.85</b>	<b>86.53</b>	<b>306.24</b>	<b>87.02</b>	-	-	-	-	-	-	-
<b>State Property Revenue</b>	<b>104.52</b>	<b>130.10%</b>	<b>135.98</b>	<b>3.73</b>	<b>2.35</b>	<b>1.64</b>	<b>124.88</b>	<b>3.38</b>	-	-	-	-	-	-	-
Concession and rental land	85.07	45.78%	38.94	3.72747	2.35	1.64	27.84	3.38	-	-	-	-	-	-	-
Public Enterprises Income	19.45	498.90%	97.04	-	-	-	97.04	-	-	-	-	-	-	-	-
<b>Income from Sales, Rental of Properties and Services</b>	<b>2,036.61</b>	<b>27.31%</b>	<b>556.17</b>	<b>113.2060</b>	<b>136.21</b>	<b>74.42</b>	<b>152.23</b>	<b>80.10</b>	-	-	-	-	-	-	-
Income of administrative public enterprises -operational services (for profit)	804.02	27.95%	224.72	51.62	82.11	5.37	54.85	30.77	-	-	-	-	-	-	-
Sales of Property of Public Administration	88.05	0.09%	0.08	0.02	0.03	0.02	0.00	0.02	-	-	-	-	-	-	-
Administrative fees	782.10	32.50%	254.19	59.07	44.19	55.09	70.42	25.43	-	-	-	-	-	-	-
Sales of Services	65.93	17.79%	11.73	1.29	2.70	2.57	2.99	2.18	-	-	-	-	-	-	-
Other Rental of immovable properties	268.33	23.26%	62.40	0.29	6.79	11.07	23.10	21.15	-	-	-	-	-	-	-
Other non tax	243.32	18.00%	43.80	0.35	0.29	10.48	29.13	3.54	-	-	-	-	-	-	-

ការងារប្រតិបត្តិការហិរញ្ញវត្ថុឆ្នាំ ២០១៨ TOFE: BUDGET IMPLEMENTATION FOR 2018

Billions of Riels	2018 C.B.L.	Implementation 5 months =41.7%	Jan-18	Feb-18	Mar-18	Apr-18	May-18	Jun-18	Jul-18	Aug-18	Sep-18	Oct-18	Nov-18	Dec-18
<b>2. CAPITAL REVENUE</b>	<b>180.19</b>	<b>23.15%</b>	<b>41.72</b>	-	-	12.88	28.83	-	-	-	-	-	-	-
Other financial assets	180.19	23.15%	41.72	-	-	12.88	28.83	-	-	-	-	-	-	-
<b>II. BUDGET EXPENDITURE</b>	<b>22,690.91</b>	<b>28.22%</b>	<b>6,403.85</b>	<b>872.15</b>	<b>1,197.99</b>	<b>1,520.38</b>	<b>1,347.21</b>	<b>1,466.11</b>	-	-	-	-	-	-
<b>I. CURRENT EXPENDITURE</b>	<b>15,218.17</b>	<b>31.92%</b>	<b>4,857.00</b>	<b>711.67</b>	<b>1,021.04</b>	<b>1,037.55</b>	<b>943.16</b>	<b>1,143.58</b>	-	-	-	-	-	-
<b>a. Wages</b>	<b>7,914.92</b>	<b>37.62%</b>	<b>2,977.84</b>	<b>515.03</b>	<b>574.88</b>	<b>670.36</b>	<b>566.57</b>	<b>650.99</b>	-	-	-	-	-	-
Personnel charges-civil administrative	6,875.20	25.04%	1,721.66	233.43	335.75	448.77	306.28	397.44	-	-	-	-	-	-
Personnel charges-national defence and security	1,039.73	120.82%	1,256.17	281.60	239.13	221.59	260.29	253.56	-	-	-	-	-	-
<b>b. Non wage</b>	<b>7,303.24</b>	<b>25.73%</b>	<b>1,879.16</b>	<b>196.64</b>	<b>446.16</b>	<b>367.20</b>	<b>376.59</b>	<b>492.59</b>	-	-	-	-	-	-
-Purchases	1,549.76	25.37%	393.23	137.90	13.59	23.97	60.84	156.94	-	-	-	-	-	-
-Services	1,743.13	13.83%	241.06	21.88	27.85	43.61	78.13	69.58	-	-	-	-	-	-
-Financial charges	387.48	47.08%	182.44	26.40	57.81	67.07	16.49	14.67	-	-	-	-	-	-
-Social Benefit	996.30	31.08%	309.64	9.47	19.49	74.18	27.92	178.58	-	-	-	-	-	-
-Grants	1,473.70	42.85%	631.46	0.99	298.15	67.59	192.28	72.44	-	-	-	-	-	-
-Other non wage	1,152.88	10.53%	121.34	-	29.27	90.77	0.93	0.37	-	-	-	-	-	-
<b>2. CAPITAL</b>	<b>7,472.74</b>	<b>20.70%</b>	<b>1,546.85</b>	<b>160.48</b>	<b>176.95</b>	<b>482.83</b>	<b>404.05</b>	<b>322.53</b>	-	-	-	-	-	-
<b>Domestic Financing</b>	<b>2,925.80</b>	<b>19.90%</b>	<b>582.23</b>	-	<b>73.81</b>	<b>168.53</b>	<b>168.05</b>	<b>171.84</b>	-	-	-	-	-	-
Tangible fixed assets and land	2,925.80	19.90%	582.23	-	73.81	168.53	168.05	171.84	-	-	-	-	-	-
External assistance (Project)	4,546.94	21.21%	964.62	160.48	103.15	314.30	236.00	150.69	-	-	-	-	-	-
<b>CURRENT DEF/SURPL.comt (I.I-II.1)</b>	<b>2,241.84</b>	<b>132.00%</b>	<b>2,959.16</b>	<b>530.42</b>	<b>299.34</b>	<b>728.53</b>	<b>976.52</b>	<b>424.35</b>	-	-	-	-	-	-
<b>OVERALL DEF/SURPL.comt (I-II)</b>	<b>(5,050.71)</b>	<b>-28.79%</b>	<b>1,454.03</b>	<b>369.94</b>	<b>122.38</b>	<b>258.58</b>	<b>601.31</b>	<b>101.82</b>	-	-	-	-	-	-
<b>3. Expenditure adjustments</b>	-	-	-	-	-	-	-	-	-	-	-	-	-	-
<b>CURRENT DEF/SURPL.cash(comt.+3)</b>	<b>2,241.84</b>	<b>132.00%</b>	<b>2,959.16</b>	<b>530.42</b>	<b>299.34</b>	<b>728.53</b>	<b>976.52</b>	<b>424.35</b>	-	-	-	-	-	-
<b>OVERALL DEF/SURPL.cash (com.+3)</b>	<b>(5,050.71)</b>	<b>-28.79%</b>	<b>1,454.03</b>	<b>369.94</b>	<b>122.38</b>	<b>258.58</b>	<b>601.31</b>	<b>101.82</b>	-	-	-	-	-	-
<b>III. FINANCING</b>	<b>5,050.71</b>	<b>-28.79%</b>	<b>(1,454.03)</b>	<b>(369.94)</b>	<b>(122.38)</b>	<b>(258.58)</b>	<b>(601.31)</b>	<b>(101.82)</b>	-	-	-	-	-	-
<b>I. FOREIGN FINANCING</b>	<b>4,059.55</b>	<b>20.30%</b>	<b>824.29</b>	<b>153.86</b>	<b>38.23</b>	<b>209.02</b>	<b>205.89</b>	<b>217.29</b>	-	-	-	-	-	-
<b>a. Budget support</b>	<b>250.00</b>	<b>58.64%</b>	<b>146.60</b>	<b>13.27</b>	-	<b>8.97</b>	<b>22.87</b>	<b>101.50</b>	-	-	-	-	-	-
-Grants-budget support	125.00		133.34	-	-	8.97	22.87	101.50	-	-	-	-	-	-
Capital Support	125.00		133.34	-	-	8.97	22.87	101.50	-	-	-	-	-	-
Bilateral grant for investment expense	125.00		133.34	-	-	8.97	22.87	101.50	-	-	-	-	-	-
-Debt and related liabilities-budget support	125.00	10.61%	13.27	13.27	-	-	-	-	-	-	-	-	-	-
<b>b. Project aid</b>	<b>4,546.94</b>	<b>20.73%</b>	<b>942.44</b>	<b>154.44</b>	<b>87.02</b>	<b>314.30</b>	<b>236.00</b>	<b>150.69</b>	-	-	-	-	-	-
<b>Spent</b>	<b>4,546.94</b>	<b>21.21%</b>	<b>964.62</b>	<b>160.48</b>	<b>103.15</b>	<b>314.30</b>	<b>236.00</b>	<b>150.69</b>	-	-	-	-	-	-
-Grants	591.10	41.67%	246.29	49.26	49.26	49.26	49.26	49.26	-	-	-	-	-	-
-Debt and related liabilities	3,955.84	18.16%	718.33	111.23	53.89	265.04	186.74	101.43	-	-	-	-	-	-
Foreign borrowing	3,955.84	18.16%	718.33	111.23	53.89	265.04	186.74	101.43	-	-	-	-	-	-

**ការងារប្រតិបត្តិការហិរញ្ញវត្ថុឆ្នាំ ២០១៨ TOFE: BUDGET IMPLEMENTATION FOR 2018**

Billions of Riels	2018 C.B.L.	Implementation		Jan-18	Feb-18	Mar-18	Apr-18	May-18	Jun-18	Jul-18	Aug-18	Sep-18	Oct-18	Nov-18	Dec-18
		5 months =41.7%													
Foreign borrowings from multilateral agencies	3,955.84	5.83%	230.82	36.90	33.43	51.07	58.49	50.94	-	-	-	-	-	-	-
Foreign borrowings from bilateral agencies	-		487.51	74.33	20.46	213.97	128.25	50.50	-	-	-	-	-	-	-
<b>c. Amortization on external debts</b>	<b>(737.39)</b>	<b>35.90%</b>	<b>(264.76)</b>	<b>(13.84)</b>	<b>(48.79)</b>	<b>(114.25)</b>	<b>(52.98)</b>	<b>(34.90)</b>	-	-	-	-	-	-	-
<b>2. DOMESTIC FINANCING</b>	<b>-</b>	<b>#DIV/0!</b>	<b>9.38</b>	<b>(55.53)</b>	<b>64.90</b>	<b>-</b>	<b>-</b>	<b>-</b>	-	-	-	-	-	-	-
<b>a. Net bank financing (monetary suvey)</b>	<b>-</b>	<b>#DIV/0!</b>	<b>173.93</b>	<b>300.33</b>	<b>(126.40)</b>	<b>-</b>	<b>-</b>	<b>-</b>	-	-	-	-	-	-	-
<b>3. OUTSTANDING OPERATIONS</b>			<b>(2,287.69)</b>	<b>(468.27)</b>	<b>(225.52)</b>	<b>(467.60)</b>	<b>(807.19)</b>	<b>(319.11)</b>	-	-	-	-	-	-	-
Error			0.00	0.00	(0.00)	0.00	0.00	(0.00)	-	-	-	-	-	-	-
<i>Memorandum Item :</i>			-												
Exchange rate (R/\$)				4,015	4,010	4,000	4,032	4,075	-	-	-	-	-	-	-
Contribution from casino and Lottery	188.44	21.65%	40.80	-	6.53	10.68	11.91	11.68	-	-	-	-	-	-	-

ថ្ងៃ ខែ ឆ្នាំ ព.ស. ២៥៦១  
រាជធានីភ្នំពេញ ថ្ងៃទី ខែ ឆ្នាំ ២០១៨

ថ្ងៃ ខែ ឆ្នាំ ព.ស. ២៥៦១  
រាជធានីភ្នំពេញ ថ្ងៃទី ខែ ឆ្នាំ ២០១៨

អគ្គនាយករង

អគ្គនាយកដ្ឋានគណនេយ្យ

ប្រធាននាយកដ្ឋានស្តុក

នាយកដ្ឋានស្តុក និង វិភាគសេដ្ឋកិច្ច

ប្រធានការិយាល័យ

ស្ថិតិហិរញ្ញវត្ថុសាធារណៈ

ចំណាយចរន្តតាមក្រសួង ឆ្នាំ ២០១៨/ CURRENT BUDGET EXPENDITURE BY MINISTRY 2018

Million Riels	2018 C.B.L.	Implementation 5 months =41.7%	Jan-18	Feb-18	Mar-18	Apr-18	May-18	Jun-18	Jul-18	Aug-18	Sep-18	Oct-18	Nov-18	Dec-18
<b>Total Current Expenditures</b>	<b>15,218,166</b>	<b>31.9%</b>	<b>4,856,927</b>	<b>711,666</b>	<b>1,020,969</b>	<b>1,037,554</b>	<b>943,160</b>	<b>1,143,579</b>						
<b>I. General Administration</b>	<b>2,426,886</b>	<b>53.1%</b>	<b>1,288,973</b>	<b>134,814</b>	<b>431,059</b>	<b>295,299</b>	<b>287,544</b>	<b>140,256</b>						
01. Royal Palace	94,699	34.4%	32,529	4,192	6,821	9,389	8,598	3,529	-	-	-	-	-	-
02. National Assembly	180,888	50.6%	91,554	48,051	-	22,122	21,381	-	-	-	-	-	-	-
03. Senate	73,617	51.1%	37,634	18,067	-	8,500	-	142	-	-	-	-	-	-
04. Counstitutional Council	11,695	60.0%	7,018	2,358	1,956	-	1,998	706	-	-	-	-	-	-
05.1 Council of Minister	409,132	24.8%	101,395	9,362	16,928	25,343	20,329	29,433	-	-	-	-	-	-
05.4 CDC	15,040	16.3%	2,451	76	-	155	77	2,143	-	-	-	-	-	-
07.2 Interior-Administration	163,582	35.1%	57,353	7,227	7,223	10,124	13,441	19,338	-	-	-	-	-	-
08. Relations Assembly and Inspections	38,956	28.2%	10,985	1,076	1,479	1,812	3,271	3,346	-	-	-	-	-	-
09. Foreign Affairs and Int'l Cooperation	123,854	32.0%	39,600	572	7,737	20,030	2,030	9,231	-	-	-	-	-	-
10. Economy and Finance	772,540	105.7%	816,382	33,169	372,314	178,394	185,021	47,483	-	-	-	-	-	-
14. Planning	79,886	25.7%	20,494	3,130	3,448	4,668	4,622	4,627	-	-	-	-	-	-
28. Urbanization and Construction	150,103	16.5%	24,807	3,171	4,296	5,638	4,959	6,743	-	-	-	-	-	-
30. National Election Committee	208,524	7.9%	16,388.93	1,113	2,360	2,393	3,723	6,800	-	-	-	-	-	-
31. National Audit Authority	13,810	23.2%	3,205	599	599	1,248	78	681	-	-	-	-	-	-
33.1 Anti-corruption Authority	42,600	36.0%	15,322	1,594	4,474	2,443	4,260	2,552	-	-	-	-	-	-
34. Public Function	47,961	24.7%	11,854	1,058	1,423	3,041	2,546	3,786	-	-	-	-	-	-
<b>II. Defense and Security</b>	<b>3,730,794</b>	<b>36.9%</b>	<b>1,377,865</b>	<b>351,998</b>	<b>251,719</b>	<b>233,251</b>	<b>273,994</b>	<b>266,903</b>						
06. National Defense	2,198,378	36.9%	811,302	156,629	156,783	146,888	183,621	167,381	-	-	-	-	-	-
07.1 Interior - Public Security	1,394,095	38.6%	538,245	191,059	89,669	79,521	85,386	92,611	-	-	-	-	-	-
26. Justice	138,321	20.5%	28,318	4,310	5,268	6,843	4,987	6,911	-	-	-	-	-	-
<b>III. Social Administrative</b>	<b>5,658,959</b>	<b>33.5%</b>	<b>1,897,359</b>	<b>200,265</b>	<b>284,779</b>	<b>453,278</b>	<b>310,100</b>	<b>648,937</b>						
11. Information	78,294	39.6%	30,983	2,389	3,067	6,612	10,679	8,237	-	-	-	-	-	-
12. Public Health	1,393,974	34.3%	477,738	24,356	35,739	77,275	46,898	293,470	-	-	-	-	-	-
16. Education, Youth and Sport	2,705,457	31.3%	845,768	108,668	147,384	194,203	179,348	216,165	-	-	-	-	-	-
18. Culture and Fine-Arts	190,101	45.6%	86,716	3,030	11,618	39,648	8,766	23,655	-	-	-	-	-	-
19. Environment	82,357	25.4%	20,899	2,750	3,565	4,236	4,404	5,945	-	-	-	-	-	-
21. Social Affair & Veteran	887,312	40.5%	359,504	50,900	72,953	114,509	45,007	76,135	-	-	-	-	-	-
23. Public Worship and Religion	64,504	28.8%	18,596	1,848	2,690	5,242	4,023	4,793	-	-	-	-	-	-
24. Woman Affairs	47,601	29.6%	14,079	1,179	1,647	3,633	3,455	4,165	-	-	-	-	-	-
32. Labour and Vocational Training	209,359	20.6%	43,076	5,146	6,115	7,922	7,521	16,372	-	-	-	-	-	-
<b>IV. Economy Administrative</b>	<b>1,379,185</b>	<b>18.6%</b>	<b>257,090</b>	<b>24,588</b>	<b>53,412</b>	<b>47,902</b>	<b>60,634</b>	<b>70,555</b>						
05.3 Civil Aviation Secretariate	49,824	9.8%	4,888	964	967	923	1,015	1,019	-	-	-	-	-	-
13. Industry, Mines and Energy	49,998	18.1%	9,030	1,000	1,425	2,011	1,875	2,719	-	-	-	-	-	-
15. Commerce	127,310	22.0%	28,001	3,837	5,221	5,201	5,805	7,937	-	-	-	-	-	-
17. Agriculture, Forestry and Fishery	245,009	25.5%	62,486	7,152	9,172	11,957	14,787	19,417	-	-	-	-	-	-
20. Rural Development	169,137	10.4%	17,544	1,776	2,492	3,391	4,103	5,782	-	-	-	-	-	-
22. Posts and Telecommunications	66,527	18.7%	12,449	1,434	1,716	2,240	3,575	3,483	-	-	-	-	-	-
25. Public Works and Transport	399,444	14.9%	59,326	3,984	17,317	9,549	14,565	13,911	-	-	-	-	-	-
27. Tourism	88,559	32.1%	28,453	1,367	10,506	4,869	5,388	6,323	-	-	-	-	-	-
29. Water Resources and Meteorology	130,175	16.1%	20,984	1,679	2,794	3,814	6,154	6,543	-	-	-	-	-	-
35. Industry and Handicrafts	53,203	26.2%	13,930	1,395	1,802	3,946	3,366	3,421	-	-	-	-	-	-
<b>V. Miscellaneous</b>	<b>2,022,342</b>	<b>1.8%</b>	<b>35,641</b>	<b>-</b>	<b>-</b>	<b>7,824</b>	<b>10,888</b>	<b>16,928</b>						

## **NOTE**



TOFE report was issued based on temporary data as following:

1. Data on Revenue at National level was received on June 21, 2018
2. Data on Expenditure at National Level was received June 8, 2018
3. Data on Loan and Grant of multilateral and bilateral was retrieved on June 28, 2018
4. Financial Operation Data (Credit Bank) was received on April 05, 2018

TOFE report will be updated in the next released.

