

# State Budget Implementation in July 2018



## Brief Report

In the early 7 months of 2018, Cambodia's macroeconomic conditions remain stable supported by stable exchange rate and manageable inflation rate. At the same time, budget implementation has shown steady progress in the transformation of public financial management reform through efforts to improve, enhance efficiency and effectiveness of revenue mobilization and spending performance, in particular focusing on the priority targets of basic economic and social development.

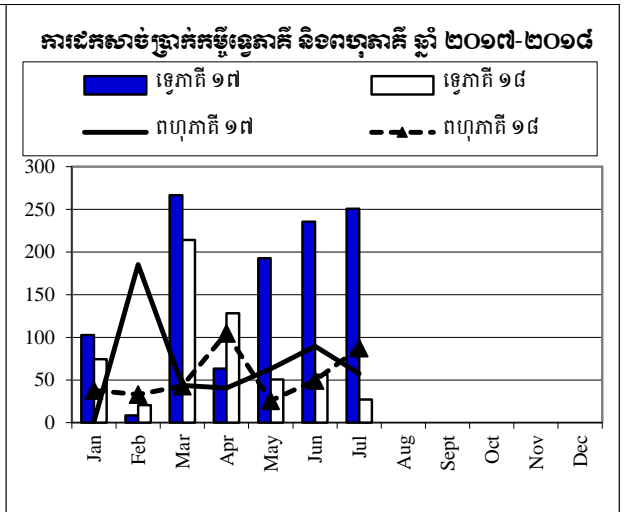
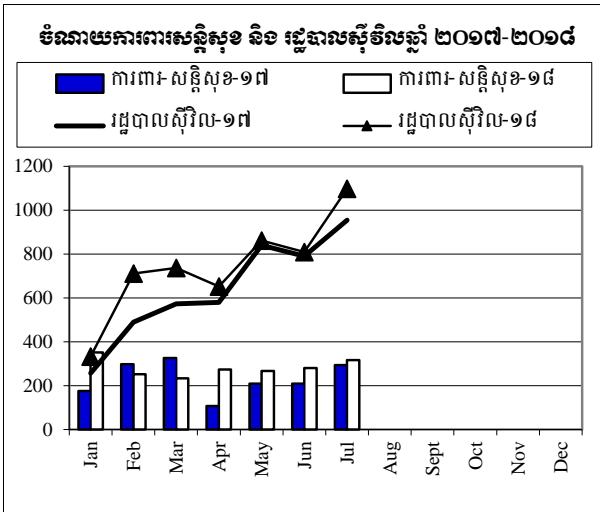
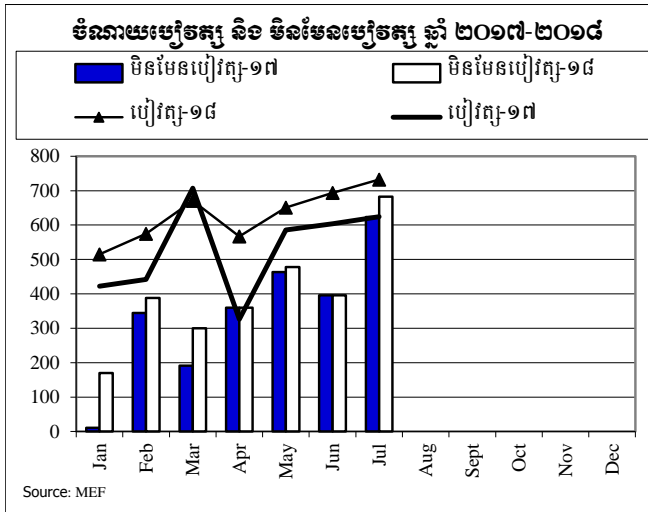
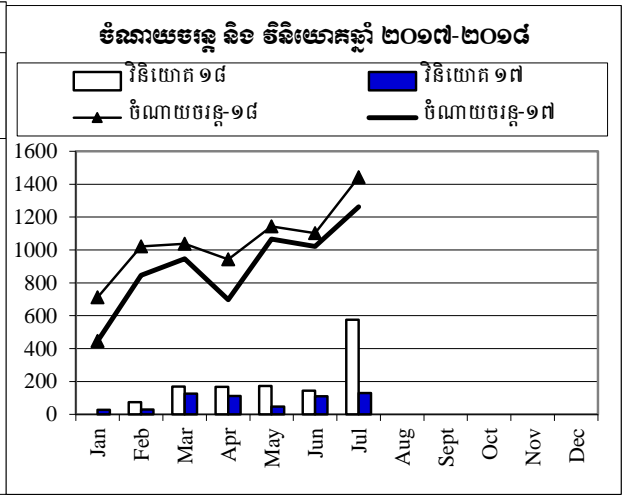
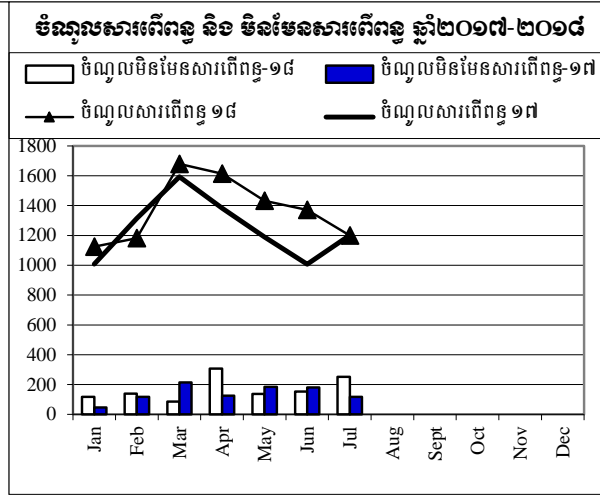
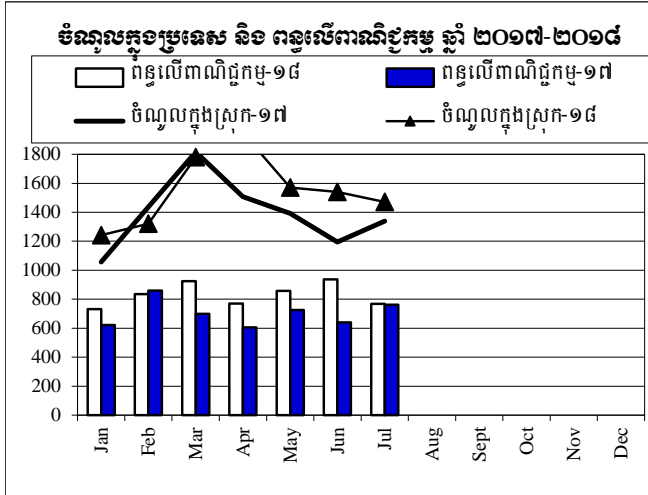
According to National Treasury preliminary data, in July 2018, Central government has achieved total domestic revenue of KHR 1,470.97 billion or increased by 9.8 percent compared to July 2017, supported by direct tax, indirect tax, and international trade tax. Overall, as of July 2018, Central government has achieved total domestic revenue of KHR 10,871.84 billion, accounted for 61.6 percent of 2018 budget law or rose by 11.6 percent compared to the same period in 2017, in which direct tax revenue increased by 10.4 percent, indirect tax revenue increased by 18.5 percent, international trade tax revenue rose by 13 percent and non-tax revenue rose by 20.9 percent, respectively. For total expenditure, Central government has reached KHR 10,008.85 billion, accounted for 43.8% percent of the 2018 budget law, in which total current expenditure has achieved KHR 7,400.84 billion, accounted for 48.2% of the budget law or grew by 17.8 percent compared to 2017.

In all, as of July 2018, the current budget balance has achieved surplus of KHR 3,394.30 billion and overall budget balance has achieved surplus of KHR 862.99 billion. By observation, the performance of State budget implementation is better due to the adjustment of some of the spending procedures and related regulatory frameworks and the participatory implementation of precautionary spirit.



# ការប្រៀបធៀបការអនុវត្តថវិកា ឆ្នាំ ២០១៧-២០១៨

គិតជា ម៉ឺលានរៀល



Source: MEF

စာရင်းအင်းအကျဉ်းချုပ် ၂၀၁၈ TOFE: BUDGET IMPLEMENTATION FOR 2018

	ဥက္ကဋ္ဌစာရင်း ၂၀၁၈	အကျိုးစီးပွား		အကျိုးစီးပွား	အကျိုးစီးပွား	အကျိုးစီးပွား	အကျိုးစီးပွား	အကျိုးစီးပွား	အကျိုးစီးပွား	အကျိုးစီးပွား	အကျိုးစီးပွား	အကျိုးစီးပွား	အကျိုးစီးပွား	အကျိုးစီးပွား
		အကျိုးစီးပွား	အကျိုးစီးပွား											
<b>I. DOMESTIC REVENUE</b>	<b>17,640.20</b>	<b>61.63%</b>	<b>10,871.84</b>	<b>1,242.09</b>	<b>1,320.37</b>	<b>1,778.97</b>	<b>1,948.52</b>	<b>1,570.05</b>	<b>1,540.89</b>	<b>1,470.97</b>	-	-	-	-
<b>I.CURRENT REVENUE</b>	<b>17,460.01</b>	<b>61.83%</b>	<b>10,795.14</b>	<b>1,242.09</b>	<b>1,320.37</b>	<b>1,766.08</b>	<b>1,919.68</b>	<b>1,570.05</b>	<b>1,524.29</b>	<b>1,452.57</b>	-	-	-	-
<b>a. TAX REVENUE</b>	<b>15,075.56</b>	<b>63.70%</b>	<b>9,603.48</b>	<b>1,124.80</b>	<b>1,181.52</b>	<b>1,679.55</b>	<b>1,613.44</b>	<b>1,432.20</b>	<b>1,371.91</b>	<b>1,200.06</b>	-	-	-	-
<b>Domestic tax revenue</b>	<b>12,934.06</b>	<b>64.50%</b>	<b>8,343.07</b>	<b>966.94</b>	<b>1,010.41</b>	<b>1,493.22</b>	<b>1,438.20</b>	<b>1,223.29</b>	<b>1,183.66</b>	<b>1,027.37</b>	-	-	-	-
Direct Tax (income tax, profits tax)	3,899.30	64.56%	2,517.50	234.80	176.19	567.84	667.47	365.26	246.74	259.19	-	-	-	-
Indirect Tax	9,034.76	64.48%	5,825.58	732.14	834.22	925.38	770.72	858.02	936.91	768.18	-	-	-	-
o.w/ - Excise Tax on specific goods	729.00	65.15%	474.94	80.22	110.98	68.14	50.16	45.16	70.14	50.15	-	-	-	-
o.w/ -Special Excise Tax(petroleum,others)	3,165.00	70.09%	2,218.27	269.00	316.53	358.74	311.75	353.24	324.83	284.18	-	-	-	-
o.w/ - Excise Tax on specific services	80.00	48.81%	39.05	5.65	5.45	8.56	4.62	4.62	7.62	2.53	-	-	-	-
Other tax revenues	98.50	64.77%	63.80	4.06	11.74	8.84	9.72	8.30	9.42	11.72	-	-	-	-
<b>Taxes on international trade</b>	<b>2,141.50</b>	<b>58.86%</b>	<b>1,260.40</b>	<b>157.86</b>	<b>171.12</b>	<b>186.33</b>	<b>175.24</b>	<b>208.91</b>	<b>188.25</b>	<b>172.69</b>	-	-	-	-
Taxes and duties on imports	2,095.70	58.80%	1,232.33	150.37	167.29	182.93	172.82	205.15	185.16	168.61	-	-	-	-
o.w/ -Customs duties on imports	1,450.00	60.03%	870.49	121.16	110.13	124.76	109.90	144.52	128.35	131.68	-	-	-	-
-Customs duties on petroleum products	220.00	55.51%	122.11	8.94	16.01	18.56	22.68	22.04	18.39	15.50	-	-	-	-
-Additional tax on oil product - Road maintenance	320.00	52.23%	167.13	11.22	31.48	29.56	31.77	27.66	25.67	9.77	-	-	-	-
-Import tax for materials used for medical production	2.20	99.68%	2.19	-	-	0.88	-	-	1.31	-	-	-	-	-
Taxes and duties on exports	45.80	61.29%	28.07	7.49	3.83	3.40	2.42	3.76	3.09	4.08	-	-	-	-
o.w/-Tax on rubber exports	33.00	43.97%	14.51	3.47	1.85	1.74	1.02	2.14	1.96	2.32	-	-	-	-
-Tax on export of agricultural products	2.30	267.47%	6.15	0.69	0.49	0.64	0.93	1.25	0.68	1.47	-	-	-	-
<b>b. NON TAX REVENUE</b>	<b>2,384.44</b>	<b>49.98%</b>	<b>1,191.66</b>	<b>117.29</b>	<b>138.85</b>	<b>86.53</b>	<b>306.24</b>	<b>137.85</b>	<b>152.38</b>	<b>252.51</b>	-	-	-	-
<b>State Property Revenue</b>	<b>104.52</b>	<b>138.87%</b>	<b>145.14</b>	<b>3.73</b>	<b>2.35</b>	<b>1.64</b>	<b>124.88</b>	<b>6.88</b>	<b>1.77</b>	<b>3.89</b>	-	-	-	-
Concession and rental land	85.07	56.55%	48.10	3.72747	2.35	1.64	27.84	6.88	1.77	3.89	-	-	-	-
Public Enterprises Income	19.45	498.90%	97.04	-	-	-	97.04	-	-	-	-	-	-	-
<b>Income from Sales, Rental of Properties and Services</b>	<b>2,036.61</b>	<b>44.82%</b>	<b>912.80</b>	<b>113.2060</b>	<b>136.21</b>	<b>74.42</b>	<b>152.23</b>	<b>127.43</b>	<b>95.93</b>	<b>213.37</b>	-	-	-	-
Income of administrative public enterprises - operational services (for profit)	804.02	46.26%	371.91	51.62	82.11	5.37	54.85	56.36	48.84	72.76	-	-	-	-
Sales of Property of Public Administration	88.05	40.12%	35.33	0.02	0.03	0.02	0.00	14.36	10.88	10.03	-	-	-	-
Administrative fees	782.10	49.13%	384.21	59.07	44.19	55.09	70.42	30.70	7.58	117.17	-	-	-	-
Sales of Services	65.93	44.72%	29.48	1.29	2.70	2.57	2.99	3.33	4.02	12.59	-	-	-	-

តារាងប្រតិបត្តិការហិរញ្ញវត្ថុឆ្នាំ ២០១៨ TOFE: BUDGET IMPLEMENTATION FOR 2018

	ច្បាប់ថវិកា ឆ្នាំ	ការអនុវត្ត		មករា ១៨	កុះកង ១៨	មិន ១៨	មេសា ១៨	ឧសភា ១៨	មិថុនា ១៨	កក្កដា ១៨	សីហា ១៨	កញ្ញា ១៨	តុលា ១៨	វិច្ឆិកា ១៨	ធ្នូ ១៨
	២០១៨	៧ខែ=៥៤,៣៣%													
	268.33	32.28%	86.61	0.29	6.79	11.07	23.10	21.15	23.70	0.51	-	-	-	-	-
Other Rental of immovable properties	28.18	18.63%	5.25	0.91	0.40	0.31	0.87	1.54	0.91	0.31	-	-	-	-	-
<b>Other non tax</b>	<b>243.32</b>	<b>54.96%</b>	<b>133.73</b>	<b>0.35</b>	<b>0.29</b>	<b>10.48</b>	<b>29.13</b>	<b>3.55</b>	<b>54.69</b>	<b>35.24</b>	-	-	-	-	-
<b>2. CAPITAL REVENUE</b>	<b>180.19</b>	<b>42.57%</b>	<b>76.71</b>	-	-	<b>12.88</b>	<b>28.83</b>	-	<b>16.59</b>	<b>18.40</b>	-	-	-	-	-
Other financial assets	180.19	42.57%	76.71	-	-	12.88	28.83	-	16.59	18.40	-	-	-	-	-
<b>II. BUDGET EXPENDITURE</b>	<b>22,690.91</b>	<b>44.07%</b>	<b>10,000.06</b>	<b>873.03</b>	<b>1,197.42</b>	<b>1,512.20</b>	<b>1,393.58</b>	<b>1,440.86</b>	<b>1,400.96</b>	<b>2,182.01</b>	-	-	-	-	-
<b>1. CURRENT EXPENDITURE</b>	<b>15,218.17</b>	<b>48.63%</b>	<b>7,400.84</b>	<b>711.67</b>	<b>1,021.04</b>	<b>1,037.55</b>	<b>943.16</b>	<b>1,143.58</b>	<b>1,101.71</b>	<b>1,442.14</b>	-	-	-	-	-
<b>a. Wages</b>	<b>7,914.92</b>	<b>55.64%</b>	<b>4,403.80</b>	<b>515.03</b>	<b>574.88</b>	<b>670.36</b>	<b>566.57</b>	<b>650.99</b>	<b>693.53</b>	<b>732.43</b>	-	-	-	-	-
Personnel charges-civil administrative	6,875.20	37.53%	2,580.48	233.43	335.75	448.77	306.28	397.44	427.49	431.33	-	-	-	-	-
o.w/ Diplomatic salary	6.40	33.36%	2.13	-	1.18	-	-	0.92	0.04	-	-	-	-	-	-
Personnel charges-national defence and security	1,039.73	175.37%	1,823.32	281.60	239.13	221.59	260.29	253.56	266.04	301.10	-	-	-	-	-
<b>b. Non wage</b>	<b>7,303.24</b>	<b>41.04%</b>	<b>2,997.04</b>	<b>196.64</b>	<b>446.16</b>	<b>367.20</b>	<b>376.59</b>	<b>492.59</b>	<b>408.18</b>	<b>709.71</b>	-	-	-	-	-
<b>-Purchases</b>	<b>1,549.76</b>	<b>41.94%</b>	<b>649.99</b>	<b>137.90</b>	<b>13.59</b>	<b>23.97</b>	<b>60.84</b>	<b>156.94</b>	<b>92.32</b>	<b>164.44</b>	-	-	-	-	-
Maintenance supplies	266.84	14.72%	39.27	1.70	0.60	3.28	6.30	7.27	11.13	8.99	-	-	-	-	-
Administration supplies	257.35	31.54%	81.16	0.96	0.41	4.89	6.11	12.11	29.87	26.80	-	-	-	-	-
Food and agricultural products	145.89	64.58%	94.22	13.00	10.51	3.17	25.69	11.48	3.82	26.56	-	-	-	-	-
Clothing and decoration	161.59	15.55%	25.12	8.24	0.05	1.02	2.96	3.25	1.55	8.05	-	-	-	-	-
Small tools, material, furniture and equip.	393.50	55.80%	219.58	113.99	0.70	2.92	15.16	19.56	15.18	52.07	-	-	-	-	-
Energy and water	159.91	28.49%	45.56	-	1.32	8.35	4.02	11.91	11.23	8.74	-	-	-	-	-
Health supplies and equipment	162.02	89.20%	144.52	-	-	0.20	0.60	91.37	19.13	33.23	-	-	-	-	-
Other supplies	2.66	21.00%	0.56	-	-	0.13	-	-	0.42	-	-	-	-	-	-
<b>-Services</b>	<b>1,743.13</b>	<b>27.90%</b>	<b>486.30</b>	<b>21.88</b>	<b>27.85</b>	<b>43.61</b>	<b>78.13</b>	<b>69.58</b>	<b>83.21</b>	<b>162.03</b>	-	-	-	-	-
o.w/ -Rentals and charges (furniture)	23.36	59.32%	13.86	0.06	0.05	9.11	1.22	2.29	0.20	0.93	-	-	-	-	-
-Maintenance and repairs	832.39	17.57%	146.29	3.29	11.38	5.38	17.63	26.32	28.36	53.94	-	-	-	-	-
<b>-Financial charges</b>	<b>387.48</b>	<b>57.40%</b>	<b>222.42</b>	<b>26.40</b>	<b>57.81</b>	<b>67.07</b>	<b>16.49</b>	<b>14.67</b>	<b>12.46</b>	<b>27.53</b>	-	-	-	-	-
o.w/ -Interests on domestic debt	-		0.17	-	-	-	-	0.17	-	-	-	-	-	-	-
-Interests on external debt	387.48		197.56	26.40	57.74	57.70	11.76	13.79	3.08	27.10	-	-	-	-	-
<b>-Social Benefit</b>	<b>996.30</b>	<b>53.64%</b>	<b>534.46</b>	<b>9.47</b>	<b>19.49</b>	<b>74.18</b>	<b>27.92</b>	<b>178.58</b>	<b>105.49</b>	<b>119.34</b>	-	-	-	-	-
o.w/- Social Security Benefits	0.00	0.00%	-	-	-	-	-	-	-	-	-	-	-	-	-
-Social Assistance to citizens	808.77	58.73%	474.98	7.08	16.06	55.41	20.67	172.10	94.42	109.25	-	-	-	-	-
-Social Assistance to social and cultural entities	131.68	42.22%	55.59	2.39	3.39	18.52	7.12	6.13	8.83	9.22	-	-	-	-	-

តារាងប្រតិបត្តិការហិរញ្ញវត្ថុឆ្នាំ ២០១៨ TOFE: BUDGET IMPLEMENTATION FOR 2018

	ច្បាប់ថវិកា ឆ្នាំ ២០១៨	ការអនុវត្ត លើខ=៥៨,៣៣%		មករា ខ	កុះ ខ	មិន ខ	មេសា ខ	ឧសភា ខ	មិថុនា ខ	កក្កដា ខ	សីហា ខ	កញ្ញា ខ	តុលា ខ	វិច្ឆិកា ខ	ធ្នូ ខ
		25.00%	2.21												
-Other social benefits	8.85	25.00%	2.21	-	-	-	-	-	2.21	-	-	-	-	-	-
<b>-Grants</b>	1,473.70	61.11%	<b>900.56</b>	0.99	298.15	67.59	192.28	72.44	44.37	224.73	-	-	-	-	-
<b>-Other non wage</b>	1,152.88	17.64%	<b>203.32</b>	-	29.27	90.77	0.93	0.37	70.33	11.65	-	-	-	-	-
<b>2. CAPITAL</b>	<b>7,472.74</b>	<b>34.78%</b>	<b>2,599.22</b>	<b>161.36</b>	<b>176.39</b>	<b>474.64</b>	<b>450.42</b>	<b>297.28</b>	<b>299.25</b>	<b>739.87</b>	-	-	-	-	-
<b>Domestic Financing</b>	<b>2,925.80</b>	<b>44.52%</b>	<b>1,302.53</b>	-	<b>73.81</b>	<b>168.53</b>	<b>168.05</b>	<b>171.84</b>	<b>144.41</b>	<b>575.89</b>	-	-	-	-	-
Tangible fixed assets and land	2,925.80	44.52%	1,302.53	-	73.81	168.53	168.05	171.84	144.41	575.89	-	-	-	-	-
External assistance (Project)	4,546.94	28.52%	1,296.69	161.36	102.58	306.12	282.37	125.44	154.83	163.99	-	-	-	-	-
<b>CURRENT DEF/SURPL.comt (I.I-II.1)</b>	<b>2,241.84</b>	<b>151.41%</b>	<b>3,394.30</b>	<b>530.42</b>	<b>299.34</b>	<b>728.53</b>	<b>976.52</b>	<b>426.47</b>	<b>422.58</b>	<b>10.43</b>	-	-	-	-	-
<b>OVERALL DEF/SURPL.comt (I-II)</b>	<b>(5,050.71)</b>	<b>-17.26%</b>	<b>871.78</b>	<b>369.06</b>	<b>122.95</b>	<b>266.77</b>	<b>554.93</b>	<b>129.19</b>	<b>139.93</b>	<b>(711.05)</b>	-	-	-	-	-
<b>CURRENT DEF/SURPL.cash(comt.+3)</b>	<b>2,241.84</b>	<b>151.41%</b>	<b>3,394.30</b>	<b>530.42</b>	<b>299.34</b>	<b>728.53</b>	<b>976.52</b>	<b>426.47</b>	<b>422.58</b>	<b>10.43</b>	-	-	-	-	-
<b>OVERALL DEF/SURPL.cash (com.+3)</b>	<b>(5,050.71)</b>	<b>-17.26%</b>	<b>871.78</b>	<b>369.06</b>	<b>122.95</b>	<b>266.77</b>	<b>554.93</b>	<b>129.19</b>	<b>139.93</b>	<b>(711.05)</b>	-	-	-	-	-
<b>III. FINANCING</b>	<b>5,050.71</b>	<b>-17.26%</b>	<b>(871.78)</b>	<b>(369.06)</b>	<b>(122.95)</b>	<b>(266.77)</b>	<b>(554.93)</b>	<b>(129.19)</b>	<b>(139.93)</b>	<b>711.05</b>	-	-	-	-	-
<b>I. FOREIGN FINANCING</b>	<b>4,059.55</b>	<b>25.52%</b>	<b>1,035.92</b>	<b>154.74</b>	<b>37.67</b>	<b>209.62</b>	<b>211.08</b>	<b>218.29</b>	<b>164.26</b>	<b>40.26</b>	-	-	-	-	-
<b>a. Budget support</b>	<b>250.00</b>	<b>64.29%</b>	<b>160.73</b>	<b>13.27</b>	-	<b>8.97</b>	<b>22.87</b>	<b>101.50</b>	<b>14.13</b>	-	-	-	-	-	-
<b>-Grants-budget support</b>	125.00		134.30	-	-	8.97	22.87	101.50	0.97	-	-	-	-	-	-
Capital Support	125.00		134.30	-	-	8.97	22.87	101.50	0.97	-	-	-	-	-	-
Bilateral grant for investment expense	125.00		134.30	-	-	8.97	22.87	101.50	0.97	-	-	-	-	-	-
<b>-Debt and related liabilities-budget support</b>	125.00	21.14%	26.43	13.27	-	-	-	-	13.16	-	-	-	-	-	-
Foreign borrowing	125.00	21.14%	26.43	13.27	-	-	-	-	13.16	-	-	-	-	-	-
Foreign borrowings from multilateral agencies	125.00	21.14%	26.43	13.27	-	-	-	-	13.16	-	-	-	-	-	-
<b>b. Project aid</b>	<b>4,546.94</b>	<b>27.52%</b>	<b>1,251.16</b>	<b>155.32</b>	<b>86.45</b>	<b>314.91</b>	<b>241.20</b>	<b>151.69</b>	<b>160.55</b>	<b>141.05</b>	-	-	-	-	-
<b>Spent</b>	<b>4,546.94</b>	<b>28.52%</b>	<b>1,296.69</b>	<b>161.36</b>	<b>102.58</b>	<b>306.12</b>	<b>282.37</b>	<b>125.44</b>	<b>154.83</b>	<b>163.99</b>	-	-	-	-	-
<b>-Grants</b>	<b>591.10</b>	<b>58.33%</b>	<b>344.81</b>	<b>49.26</b>	<b>49.26</b>	<b>49.26</b>	<b>49.26</b>	<b>49.26</b>	<b>49.26</b>	<b>49.26</b>	-	-	-	-	-
Bilateral grant for investment expense	591.10	58.33%	344.81	49.26	49.26	49.26	49.26	49.26	49.26	49.26	-	-	-	-	-
<b>-Debt and related liabilities</b>	<b>3,955.84</b>	<b>24.06%</b>	<b>951.88</b>	<b>112.10</b>	<b>53.32</b>	<b>256.86</b>	<b>233.11</b>	<b>76.18</b>	<b>105.57</b>	<b>114.73</b>	-	-	-	-	-
Foreign borrowing	3,955.84	24.06%	951.88	112.10	53.32	256.86	233.11	76.18	105.57	114.73	-	-	-	-	-
Foreign borrowings from multilateral agencies	3,955.84	9.63%	381.02	37.78	32.86	42.89	104.86	25.68	49.39	87.56	-	-	-	-	-
Foreign borrowings from bilateral agencies	-		570.86	74.33	20.46	213.97	128.25	50.50	56.18	27.17	-	-	-	-	-
<b>Pending</b>			<b>(45.53)</b>	<b>(6.05)</b>	<b>(16.13)</b>	<b>8.79</b>	<b>(41.17)</b>	<b>26.25</b>	<b>5.72</b>	<b>(22.94)</b>	-	-	-	-	-
<b>c. Amortization on external debts</b>	<b>(737.39)</b>	<b>50.99%</b>	<b>(375.98)</b>	<b>(13.84)</b>	<b>(48.79)</b>	<b>(114.25)</b>	<b>(52.98)</b>	<b>(34.90)</b>	<b>(10.43)</b>	<b>(100.79)</b>	-	-	-	-	-

តារាងប្រតិបត្តិការហិរញ្ញវត្ថុឆ្នាំ ២០១៨ TOFE: BUDGET IMPLEMENTATION FOR 2018

	ច្បាប់ថវិកា ឆ្នាំ ២០១៨	ការអនុវត្ត ៧ខែ=៥៤,៣៣%		មករា ១៨	កុម្ភៈ ១៨	មិថុនា ១៨	សីហា ១៨	ឧសភា ១៨	មិថុនា ១៨	កក្កដា ១៨	សីហា ១៨	កញ្ញា ១៨	តុលា ១៨	វិច្ឆិកា ១៨	ធ្នូ ១៨
		#DIV/0!													
<b>2. DOMESTIC FINANCING</b>	-	#DIV/0!	154.14	(55.53)	64.90	92.32	35.51	(0.44)	55.45	(38.08)	-	-	-	-	-
a. Net bank financing (monetary suvey)	-	#DIV/0!	(1,378.19)	300.33	(126.40)	(1,023.76)	(229.89)	(301.01)	40.62	(38.08)	-	-	-	-	-
- Government's deposits		#DIV/0!	(1,378.19)	300.33	(126.40)	(1,023.76)	(229.89)	(301.01)	40.62	(38.08)	-	-	-	-	-
e. \$Acc.-gap between NBC &MEF			1,532.34	(355.85)	191.31	1,116.08	265.40	300.57	14.83	-	-	-	-	-	-
<b>3. OUTSTANDING OPERATIONS</b>			(2,061.84)	(468.27)	(225.52)	(568.71)	(801.53)	(347.04)	(359.64)	708.86	-	-	-	-	-
Error			0.00	0.00	(0.00)	0.00	0.00	(0.00)	0.00	0.00	-	-	-	-	-
<i>Memorandum Item :</i>			-												
Exchange rate (R/\$)				4,015	4,010	4,000	4,032	4,075	4,063	4,059	-	-	-	-	-
Provincial revenue	1,673.64	25.89%	433.37	82.18	351.18	-	-	-	-	-	-	-	-	-	-
o.w. provincial tax revenue	910.44	18.04%	164.29	74.15	90.13	-	-	-	-	-	-	-	-	-	-
o.w. prov. non-tax revenue	23.60	36.62%	8.64	4.15	4.49	-	-	-	-	-	-	-	-	-	-
o.w. prov. Transfer from central	739.60	35.21%	260.44	3.88	256.56	-	-	-	-	-	-	-	-	-	-
Provincial Balance			433.37	82.18	351.18	-	-	-	-	-	-	-	-	-	-
Contribution from casino and Lottery	188.44	31.93%	60.18	-	6.53	10.68	11.91	11.68	19.38	-	-	-	-	-	-

ថ្ងៃ ខែ ឆ្នាំរកា ព្រឹក ៧.ស. ២៥៦២  
 រាជធានីភ្នំពេញ ថ្ងៃទី ខែ ឆ្នាំ ២០១៨

ថ្ងៃ ខែ ឆ្នាំរកា ព្រឹក ៧.ស. ២៥៦២  
 រាជធានីភ្នំពេញ ថ្ងៃទី ខែ ឆ្នាំ ២០១៨

អគ្គនាយករង  
 អគ្គនាយកដ្ឋានគោលនយោបាយ

ប្រធាននាយកដ្ឋានស្តីពី   
 នាយកដ្ឋានស្តីពី និងវិភាគសេដ្ឋកិច្ច

ប្រធានការិយាល័យ  
 ស្តីពីហិរញ្ញវត្ថុសាធារណៈ

**ចំណាយបច្ចុប្បន្នក្រសួង ឆ្នាំ ២០១៨/ CURRENT BUDGET EXPENDITURE BY MINISTRY 2018**

គិតជាលានរៀល

	ច្បាប់ថវិកា ឆ្នាំ ២០១៨	ការអនុវត្ត លើស-ខ្វះ, ៣៣%	មករា ១៨	កុះ ១៨	មីនា ១៨	មេសា ១៨	ឧសភា ១៨	មិថុនា ១៨	កក្កដា ១៨	សីហា ១៨	កញ្ញា ១៨	តុលា ១៨	វិច្ឆិកា ១៨	ធ្នូ ១៨
<b>Total Current Expenditures</b>	<b>15,218,166</b>	<b>48.6%</b>	<b>7,400,772</b>	<b>711,666</b>	<b>1,020,969</b>	<b>1,037,554</b>	<b>943,160</b>	<b>1,143,579</b>	<b>1,101,709</b>	<b>1,442,136</b>				
<b>I. General Administration</b>	<b>2,426,886</b>	<b>81.7%</b>	<b>1,982,199</b>	<b>134,814</b>	<b>431,059</b>	<b>295,299</b>	<b>287,544</b>	<b>140,256</b>	<b>229,329</b>	<b>463,897</b>				
01. Royal Palace	94,699	53.0%	50,179	4,192	6,821	9,389	8,598	3,529	11,652	5,998	-	-	-	-
02. National Assembly	180,888	75.2%	136,081	48,051	-	22,122	21,381	-	-	44,528	-	-	-	-
03. Senate	73,617	73.6%	54,214	18,067	-	8,500	11,209	142	7,439	9,141	-	-	-	-
04. Constitutional Council	11,695	81.8%	9,561	2,358	1,956	-	1,998	706	-	2,543	-	-	-	-
05.1 Council of Minister	409,132	42.0%	171,896	9,362	16,928	25,343	20,329	29,433	31,982	38,519	-	-	-	-
05.4 CDC	15,040	26.5%	3,993	76	-	155	77	2,143	853	688	-	-	-	-
07.2 Interior-Administration	163,582	47.9%	78,369	7,227	7,223	10,124	13,441	19,338	11,647	9,369	-	-	-	-
08. Relations Assembly and Inspections	38,956	50.9%	19,813	1,076	1,479	1,812	3,271	3,346	3,761	5,067	-	-	-	-
09. Foreign Affairs and Int'l Cooperation	123,854	42.9%	53,182	572	7,737	20,030	2,030	9,231	8,614	4,968	-	-	-	-
10. Economy and Finance	772,540	152.8%	1,180,465	33,169	372,314	178,394	185,021	47,483	105,308	258,775	-	-	-	-
14. Planning	79,886	46.0%	36,716	3,130	3,448	4,668	4,622	4,627	5,936	10,286	-	-	-	-
28. Urbanization and Construction	150,103	33.6%	50,467	3,171	4,296	5,638	4,959	6,743	9,549	16,111	-	-	-	-
30. National Election Committee	208,524	41.2%	85,978.77	1,113	2,360	2,393	3,723	6,800	22,443	47,147	-	-	-	-
31. National Audit Authority	13,810	39.0%	5,382	599	599	1,248	78	681	1,096	1,081	-	-	-	-
33.1 Anti-corruption Authority	42,600	57.5%	24,486	1,594	4,474	2,443	4,260	2,552	4,254	4,909	-	-	-	-
34. Public Function	47,961	44.6%	21,414	1,058	1,423	3,041	2,546	3,786	4,792	4,768	-	-	-	-
<b>II. Defense and Security</b>	<b>3,730,794</b>	<b>52.9%</b>	<b>1,974,859</b>	<b>351,998</b>	<b>251,719</b>	<b>233,251</b>	<b>273,994</b>	<b>266,903</b>	<b>280,045</b>	<b>316,949</b>				
06. National Defense	2,198,378	52.7%	1,159,615	156,629	156,783	146,888	183,621	167,381	163,787	184,527	-	-	-	-
07.1 Interior - Public Security	1,394,095	54.8%	763,715	191,059	89,669	79,521	85,386	92,611	106,703	118,767	-	-	-	-
26. Justice	138,321	37.3%	51,528	4,310	5,268	6,843	4,987	6,911	9,555	13,656	-	-	-	-
<b>III. Social Administrative</b>	<b>5,658,959</b>	<b>52.6%</b>	<b>2,975,376</b>	<b>200,265</b>	<b>284,779</b>	<b>453,278</b>	<b>310,100</b>	<b>648,937</b>	<b>512,625</b>	<b>565,393</b>				
11. Information	78,294	54.2%	42,457	2,389	3,067	6,612	10,679	8,237	5,623	5,850	-	-	-	-
12. Public Health	1,393,974	56.1%	782,517	24,356	35,739	77,275	46,898	293,470	136,151	168,629	-	-	-	-
16. Education, Youth and Sport	2,705,457	50.5%	1,366,336	108,668	147,384	194,203	179,348	216,165	258,720	261,848	-	-	-	-
18. Culture and Fine-Arts	190,101	54.9%	104,287	3,030	11,618	39,648	8,766	23,655	8,564	9,006	-	-	-	-
19. Environment	82,357	43.4%	35,724	2,750	3,565	4,236	4,404	5,945	6,110	8,715	-	-	-	-
21. Social Affair & Veteran	887,312	57.9%	513,938	50,900	72,953	114,509	45,007	76,135	70,252	84,183	-	-	-	-
23. Public Worship and Religion	64,504	45.5%	29,333	1,848	2,690	5,242	4,023	4,793	4,872	5,865	-	-	-	-
24. Woman Affairs	47,601	50.5%	24,018	1,179	1,647	3,633	3,455	4,165	4,657	5,283	-	-	-	-
32. Labour and Vocational Training	209,359	36.7%	76,767	5,146	6,115	7,922	7,521	16,372	17,677	16,014	-	-	-	-
<b>IV. Economy Administrative</b>	<b>1,379,185</b>	<b>30.1%</b>	<b>415,401</b>	<b>24,588</b>	<b>53,412</b>	<b>47,902</b>	<b>60,634</b>	<b>70,555</b>	<b>69,885</b>	<b>88,427</b>				
05.3 Civil Aviation Secretariate	49,824	20.0%	9,980	964	967	923	1,015	1,019	2,392	2,700	-	-	-	-
13. Industry, Mines and Energy	49,998	28.1%	14,043	1,000	1,425	2,011	1,875	2,719	2,265	2,749	-	-	-	-
15. Commerce	127,310	39.2%	49,952	3,837	5,221	5,201	5,805	7,937	6,028	15,923	-	-	-	-
17. Agriculture, Forestry and Fishery	245,009	40.7%	99,723	7,152	9,172	11,957	14,787	19,417	14,972	22,265	-	-	-	-
20. Rural Development	169,137	20.2%	34,103	1,776	2,492	3,391	4,103	5,782	7,664	8,895	-	-	-	-
22. Posts and Telecommunications	66,527	32.2%	21,416	1,434	1,716	2,240	3,575	3,483	4,341	4,626	-	-	-	-
25. Public Works and Transport	399,444	21.4%	85,606	3,984	17,317	9,549	14,565	13,911	11,760	14,520	-	-	-	-
27. Tourism	88,559	50.2%	44,457	1,367	10,506	4,869	5,388	6,323	9,585	6,419	-	-	-	-
29. Water Resources and Meteorology	130,175	26.1%	33,940	1,679	2,794	3,814	6,154	6,543	6,563	6,392	-	-	-	-
35. Industry and Handicrafts	53,203	41.7%	22,180	1,395	1,802	3,946	3,366	3,421	4,313	3,937	-	-	-	-
<b>V. Miscellaneous</b>	<b>2,022,342</b>	<b>2.6%</b>	<b>52,938</b>	<b>-</b>	<b>-</b>	<b>7,824</b>	<b>10,888</b>	<b>16,928</b>	<b>9,826</b>	<b>7,470</b>				
99.Unexpect Expenditure	2,022,342	2.6%	52,938	-	-	7,824	10,888	16,928	9,826	7,470	-	-	-	-

## **NOTE**



TOFE report was issued based on temporary data as following:

1. Data on Revenue at National level was received on August 25, 2018
2. Data on Expenditure at National Level was received August 27, 2018
3. Data on Loan and Grant of multilateral and bilateral was retrieved on August 20, 2018
4. Financial Operation Data (Credit Bank) was received on August 20, 2018

TOFE report will be updated in the next released.

