

State Budget Implementation in January 2019



Brief Report

In early 2019, Cambodia has maintained good macroeconomic performance indicated by stable exchange rate and well-manageable inflation rate. At the meantime, budget implementation has been in steady progress during the transformation of public financial management reform through efforts to improve and enhance efficiency and effectiveness of revenue mobilization and spending performance; in particular, focusing on the prioritized targets of economic and social development basis.

According to National Treasury preliminary data, Central government in January 2019 achieved total domestic revenue of KHR **1,514.30** billion signifying the increase by **21.68** percent compared to the same period in 2018 (or in equivalent to 7.65 percent against the 2019 budget law), of which the tax revenue accounted for 94.53 percent and non-tax revenue for 5.47 percent. The growth was mainly attributed to the increase in total tax revenues composed of direct, indirect, and international trade taxes marking the increase rate by 27.38 percent, 30.25 percent, and 44.74 percent, respectively.

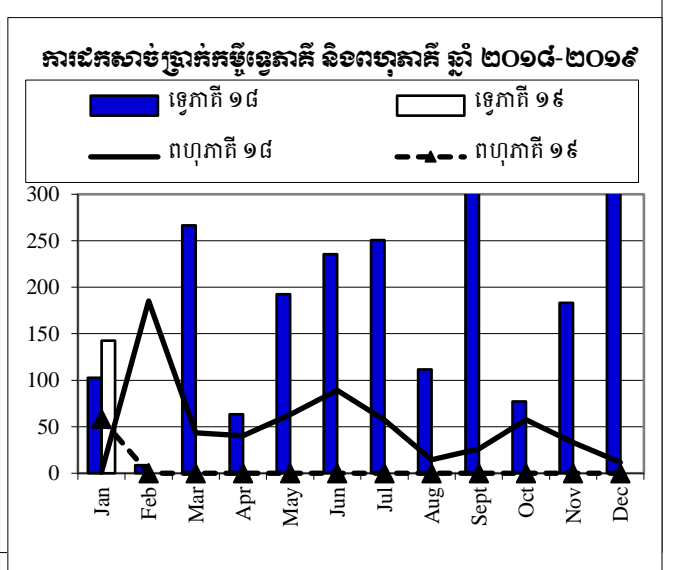
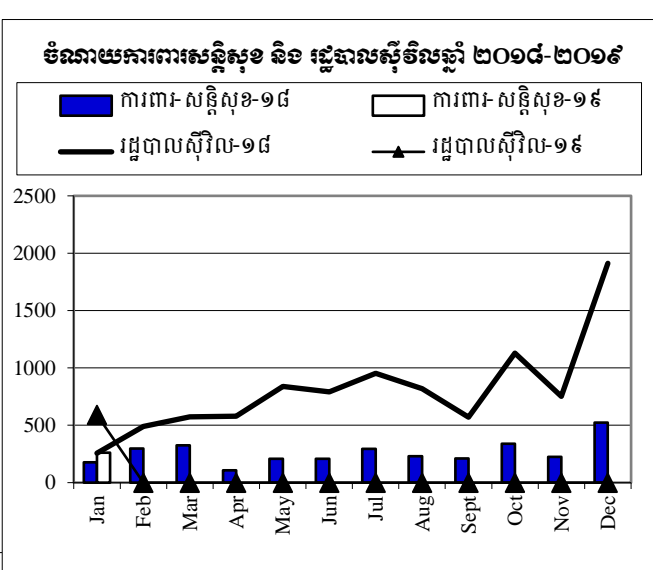
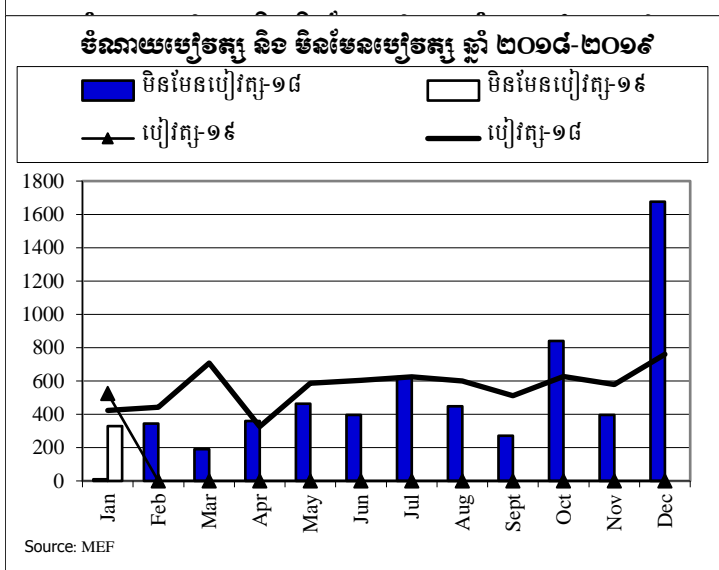
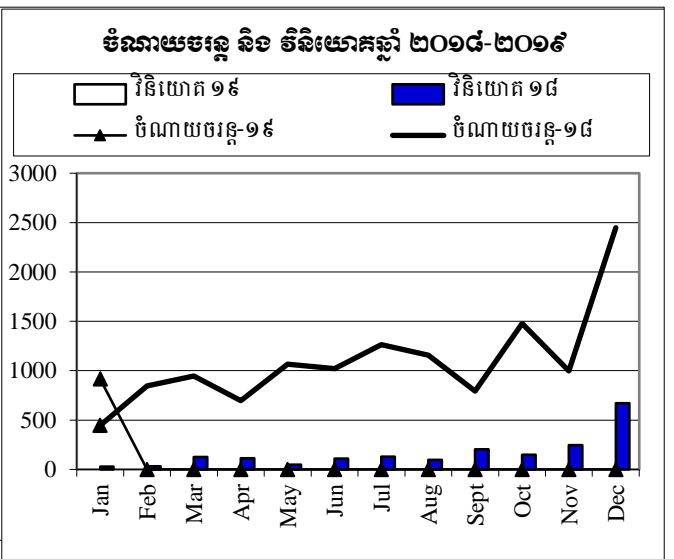
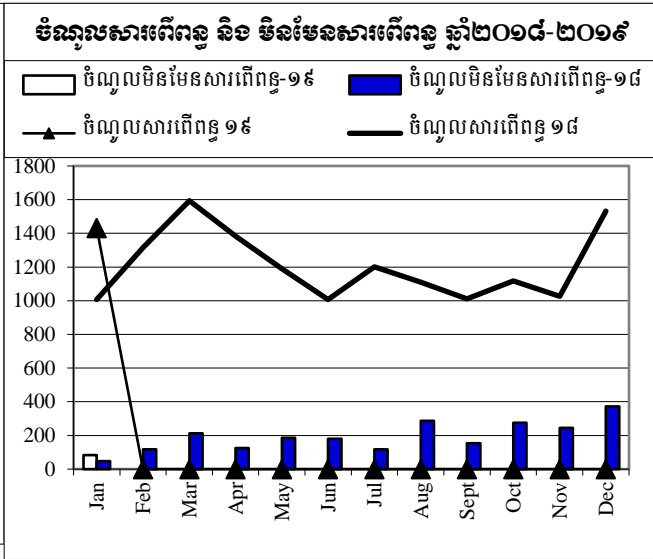
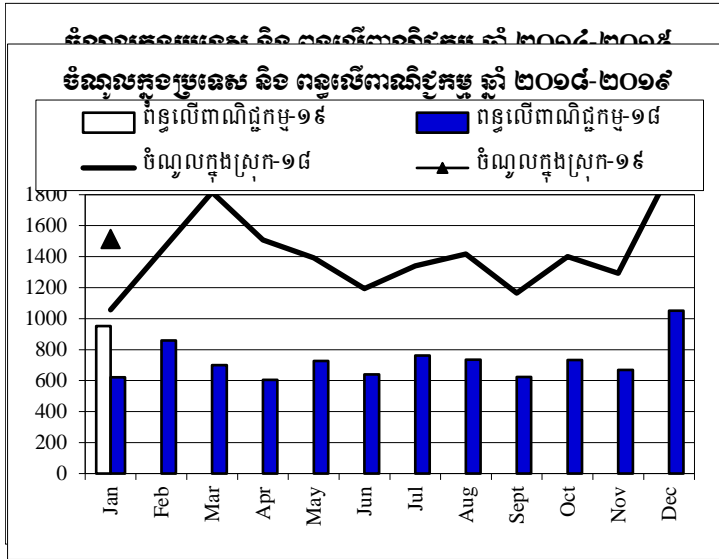
In January 2019, the national administration spending, on the other hand, was KHR **1,205.62** billion marking the increase by **38.01** percent compared to the same period of 2018 or equal to **4.89** percent against the 2019 budget law. The implementation on the current expense was achieved KHR **915.52** billion indicating the increase by **28.65** percent compared to the same period in 2018, of which salary expense accounted for KHR 524.83 billion and other expenses for KHR 328.09 billion.

Of the same period, the current budget balance has achieved the surplus of KHR **598.77** billion and overall budget balance has achieved the surplus of KHR **308.68** billion. Based on this preliminary data, the implementation on state revenue collection and expenditure have improved, in particular, increasing by **21.68** percent and **38.01** percent, respectively, compared with the same period of year 2017 (which increased by **17.74** percent and **23.87** percent, respectively).



ការប្រៀបធៀបការអនុវត្តវិភាគ ឆ្នាំ ២០១៧-២០១៨

កិតជា មីលានរៀល



Source: MEF

စာရင်းအင်းစနစ်များအရ ၂၀၁၉ TOFE: BUDGET IMPLEMENTATION FOR 2019

စီမံကိန်း ဝန်ကြီးဌာန

	ဥက္ကဋ္ဌ နှစ် ၂၀၁၉	အသွင်း /ဥက္ကဋ္ဌ	စာရင်း အသွင်း	စာရင်း စာရင်း	စာရင်း စာရင်း	စာရင်း စာရင်း	စာရင်း စာရင်း	စာရင်း စာရင်း	စာရင်း စာရင်း	စာရင်း စာရင်း	စာရင်း စာရင်း	စာရင်း စာရင်း	စာရင်း စာရင်း	စာရင်း စာရင်း	စာရင်း စာရင်း
I. DOMESTIC REVENUE	19,786.26	7.65%	1,514.30	1,514.30	-	-	-	-	-	-	-	-	-	-	-
I.CURRENT REVENUE	19,593.11	7.73%	1,514.30	1,514.30	-	-	-	-	-	-	-	-	-	-	-
a. TAX REVENUE	16,879.00	8.48%	1,431.58	1,431.58	-	-	-	-	-	-	-	-	-	-	-
Domestic tax revenue	14,468.00	8.32%	1,203.32	1,203.32	-	-	-	-	-	-	-	-	-	-	-
Direct Tax (income tax, profits tax)	4,330.00	5.79%	250.74	250.74	-	-	-	-	-	-	-	-	-	-	-
Indirect Tax	10,138.00	9.40%	952.58	952.58	-	-	-	-	-	-	-	-	-	-	-
o.w/ - Excise Tax on specific goods	900.00	7.23%	65.09	65.09	-	-	-	-	-	-	-	-	-	-	-
o.w/ -Special Excise Tax(petroleum,others)	3,152.00	12.13%	382.34	382.34	-	-	-	-	-	-	-	-	-	-	-
o.w/ - Excise Tax on specific services	85.00	5.38%	4.57	4.57	-	-	-	-	-	-	-	-	-	-	-
Other tax revenues	99.50	6.82%	6.79	6.79	-	-	-	-	-	-	-	-	-	-	-
Taxes on international trade	2,411.00	9.47%	228.26	228.26	-	-	-	-	-	-	-	-	-	-	-
Taxes and duties on imports	2,361.00	9.48%	223.73	223.73	-	-	-	-	-	-	-	-	-	-	-
o.w/ -Customs duties on imports	1,563.00	10.67%	166.72	166.72	-	-	-	-	-	-	-	-	-	-	-
-Customs duties on petroleum products	340.00	6.12%	20.80	20.80	-	-	-	-	-	-	-	-	-	-	-
-Additional tax on oil product - Road maintenance	342.00	7.12%	24.35	24.35	-	-	-	-	-	-	-	-	-	-	-
-Import tax for materials used for medical production	5.50	0.00%	-	-	-	-	-	-	-	-	-	-	-	-	-
Taxes and duties on exports	50.00	9.05%	4.53	4.53	-	-	-	-	-	-	-	-	-	-	-
o.w/-Tax on rubber exports	10.00	8.99%	0.90	0.90	-	-	-	-	-	-	-	-	-	-	-
-Tax on export of agricultural products	33.00	8.16%	2.69	2.69	-	-	-	-	-	-	-	-	-	-	-
o.w/-Tax on export of agricultural products	6.50	13.26%	0.86	0.86	-	-	-	-	-	-	-	-	-	-	-
b. NON TAX REVENUE	2,714.11	3.05%	82.72	82.72	-	-	-	-	-	-	-	-	-	-	-
State Property Revenue	127.42	1.94%	2.47	2.47	-	-	-	-	-	-	-	-	-	-	-
Concession and rental land	106.17	2.32%	2.47	2.46687	-	-	-	-	-	-	-	-	-	-	-
Public Enterprises Income	21.25	0.00%	-	-	-	-	-	-	-	-	-	-	-	-	-
Income from Sales, Rental of Properties and Services	2,295.83	3.42%	78.46	78.4587	-	-	-	-	-	-	-	-	-	-	-
Income of administrative public enterprises - operational services (for profit)	955.98	5.89%	56.31	56.31	-	-	-	-	-	-	-	-	-	-	-
Sales of Property of Public Administration	103.67	6.38%	6.61	6.61	-	-	-	-	-	-	-	-	-	-	-
Administrative fees	806.24	1.47%	11.89	11.89	-	-	-	-	-	-	-	-	-	-	-
Sales of Services	75.10	3.74%	2.81	2.81	-	-	-	-	-	-	-	-	-	-	-
	322.16	0.25%	0.82	0.82	-	-	-	-	-	-	-	-	-	-	-

តារាងប្រតិបត្តិការហិរញ្ញវត្ថុឆ្នាំ ២០១៩ TOFE: BUDGET IMPLEMENTATION FOR 2019

គិតជា ម៉ឺលានរៀល

	ច្បាប់ថវិកា ឆ្នាំ ២០១៩	ការអនុវត្ត /ច្បាប់	សរុប ការអនុវត្ត	មករា ១៩	កុម្ភៈ ១៩	មិថុនា ១៩	មេសា ១៩	ឧសភា ១៩	មិថុនា ១៩	កក្កដា ១៩	សីហា ១៩	កញ្ញា ១៩	តុលា ១៩	វិច្ឆិកា ១៩	ធ្នូ ១៩
Other Rental of immovable properties	32.69	0.05%	0.02	0.02	-	-	-	-	-	-	-	-	-	-	-
Other non tax	290.86	0.62%	1.79	1.79	-	-	-	-	-	-	-	-	-	-	-
o.w/ Other exceptional revenues	-	...	1.50	1.50	-	-	-	-	-	-	-	-	-	-	-
2. CAPITAL REVENUE	193.15	0.00%	-	-	-	-	-	-	-	-	-	-	-	-	-
Other financial assets	193.15	0.00%	-	-	-	-	-	-	-	-	-	-	-	-	-
II. BUDGET EXPENDITURE	24,632.87	4.89%	1,205.62	1,205.62	-	-	-	-	-	-	-	-	-	-	-
1. CURRENT EXPENDITURE	17,629.70	5.19%	915.52	915.52	-	-	-	-	-	-	-	-	-	-	-
a. Wages	7,877.72	6.66%	524.83	524.83	-	-	-	-	-	-	-	-	-	-	-
Personnel charges-civil administrative	4,676.29	5.68%	265.77	265.77	-	-	-	-	-	-	-	-	-	-	-
o.w/ Diplomatic salary	4.33	26.08%	1.13	1.13	-	-	-	-	-	-	-	-	-	-	-
Personnel charges-national defence and security	3,201.44	8.09%	259.06	259.06	-	-	-	-	-	-	-	-	-	-	-
b. Non wage	9,751.98	4.01%	390.70	390.70	-	-	-	-	-	-	-	-	-	-	-
-Purchases	1,620.97	0.96%	15.53	15.53	-	-	-	-	-	-	-	-	-	-	-
Maintenance supplies	284.41	0.68%	1.94	1.94	-	-	-	-	-	-	-	-	-	-	-
Administration supplies	233.92	0.48%	1.13	1.13	-	-	-	-	-	-	-	-	-	-	-
Food and agricultural products	158.31	0.00%	-	-	-	-	-	-	-	-	-	-	-	-	-
Clothing and decoration	166.93	2.21%	3.69	3.69	-	-	-	-	-	-	-	-	-	-	-
Small tools, material, furniture and equip.	462.27	1.86%	8.62	8.62	-	-	-	-	-	-	-	-	-	-	-
Energy and water	164.29	0.09%	0.15	0.15	-	-	-	-	-	-	-	-	-	-	-
Health supplies and equipment	147.66	0.00%	-	-	-	-	-	-	-	-	-	-	-	-	-
Other supplies	3.18	0.00%	-	-	-	-	-	-	-	-	-	-	-	-	-
-Services	1,739.29	2.02%	35.16	35.16	-	-	-	-	-	-	-	-	-	-	-
o.w/ -Rentals and charges (furniture)	23.13	37.00%	8.56	8.56	-	-	-	-	-	-	-	-	-	-	-
-Maintenance and repairs	871.56	0.44%	3.81	3.81	-	-	-	-	-	-	-	-	-	-	-
-Financial charges	547.70	11.43%	62.61	62.61	-	-	-	-	-	-	-	-	-	-	-
-Interests on external debt	547.70	11.43%	62.61	62.61	-	-	-	-	-	-	-	-	-	-	-
-Social Benefit	1,981.90	3.54%	70.17	70.17	-	-	-	-	-	-	-	-	-	-	-
o.w/- Social Security Benefits	868.87	7.66%	66.59	66.59	-	-	-	-	-	-	-	-	-	-	-
-Social Assistance to citizens	913.84	0.31%	2.86	2.86	-	-	-	-	-	-	-	-	-	-	-
-Social Assistance to social and cultural entities	139.43	0.51%	0.71	0.71	-	-	-	-	-	-	-	-	-	-	-

តារាងប្រតិបត្តិការហិរញ្ញវត្ថុឆ្នាំ ២០១៩ TOFE: BUDGET IMPLEMENTATION FOR 2019

គិតជា ម៉ឺលានដុល្លារ

	ច្បាប់ថវិកា ឆ្នាំ ២០១៩	ការអនុវត្ត /ច្បាប់	សរុប ការអនុវត្ត	មករា ១៩	កុម្ភៈ ១៩	មីនា ១៩	មេសា ១៩	ឧសភា ១៩	មិថុនា ១៩	កក្កដា ១៩	សីហា ១៩	កញ្ញា ១៩	តុលា ១៩	វិច្ឆិកា ១៩	ធ្នូ ១៩
-Other social benefits	11.21	0.00%	-	-	-	-	-	-	-	-	-	-	-	-	-
-Grants	2,457.70	8.43%	207.11	207.11	-	-	-	-	-	-	-	-	-	-	-
-Other non wage	1,404.42	0.01%	0.13	0.13	-	-	-	-	-	-	-	-	-	-	-
o.w/ -Unanticipated Expense(Reserve)	1,019.01	0.00%	-	-	-	-	-	-	-	-	-	-	-	-	-
-Unexpected expenditures(Others exp.)	50.00	0.00%	-	-	-	-	-	-	-	-	-	-	-	-	-
2. CAPITAL	7,003.17	4.14%	290.09	290.09	-	-	-	-	-	-	-	-	-	-	-
Domestic Financing	1,679.41	0.00%	-	-	-	-	-	-	-	-	-	-	-	-	-
Tangible fixed assets and land	1,486.26	0.00%	-	-	-	-	-	-	-	-	-	-	-	-	-
Other financial assets	193.15	0.00%	-	-	-	-	-	-	-	-	-	-	-	-	-
External assistance (Project)	5,323.77	5.45%	290.09	290.09	-	-	-	-	-	-	-	-	-	-	-
CURRENT DEF/SURPL.comt (I.1-II.1)	1,963.41	30.50%	598.77	598.77	-	-	-	-	-	-	-	-	-	-	-
CURRENT DEF/SURPL.cash(comt.+3)	1,963.41	30.50%	598.77	598.77	-	-	-	-	-	-	-	-	-	-	-
III. FINANCING	4,846.61	-6.37%	(308.68)	(308.68)	-	-	-	-	-	-	-	-	-	-	-
I. FOREIGN FINANCING	4,524.00	5.69%	257.31	257.31	-	-	-	-	-	-	-	-	-	-	-
a. Budget support	250.00	0.00%	-	-	-	-	-	-	-	-	-	-	-	-	-
-Grants-budget support	125.00	0.00%	-	-	-	-	-	-	-	-	-	-	-	-	-
Capital Support	125.00	0.00%	-	-	-	-	-	-	-	-	-	-	-	-	-
Bilateral grant for investment expense	125.00	0.00%	-	-	-	-	-	-	-	-	-	-	-	-	-
-Debt and related liabilities-budget support	125.00	0.00%	-	-	-	-	-	-	-	-	-	-	-	-	-
Foreign borrowing	125.00	0.00%	-	-	-	-	-	-	-	-	-	-	-	-	-
Foreign borrowings from multilateral agencies	125.00	0.00%	-	-	-	-	-	-	-	-	-	-	-	-	-
b. Project aid	5,323.77	5.24%	278.94	278.94	-	-	-	-	-	-	-	-	-	-	-
Spent	5,323.77	5.45%	290.09	290.09	-	-	-	-	-	-	-	-	-	-	-
-Grants	1,064.75	8.33%	88.73	88.73	-	-	-	-	-	-	-	-	-	-	-
Bilateral grant for investment expense	1,064.75	8.33%	88.73	88.73	-	-	-	-	-	-	-	-	-	-	-
-Debt and related liabilities	4,259.02	4.73%	201.36	201.36	-	-	-	-	-	-	-	-	-	-	-
Foreign borrowing	4,259.02	4.73%	201.36	201.36	-	-	-	-	-	-	-	-	-	-	-
Foreign borrowings from multilateral agencies	4,259.02	1.38%	58.61	58.61	-	-	-	-	-	-	-	-	-	-	-
Foreign borrowings from bilateral agencies	-	...	142.75	142.75	-	-	-	-	-	-	-	-	-	-	-
Pending		...	(11.16)	(11.16)	-	-	-	-	-	-	-	-	-	-	-

តារាងប្រតិបត្តិការហិរញ្ញវត្ថុឆ្នាំ ២០១៩ TOFE: BUDGET IMPLEMENTATION FOR 2019

គិតជា ម៉ឺលានរៀល

	ច្បាប់ថវិកា ឆ្នាំ ២០១៩	ការអនុវត្ត /ច្បាប់	សរុប ការអនុវត្ត	មករា ១៩	កុម្ភៈ ១៩	មីនា ១៩	មេសា ១៩	ឧសភា ១៩	មិថុនា ១៩	កក្កដា ១៩	សីហា ១៩	កញ្ញា ១៩	តុលា ១៩	វិច្ឆិកា ១៩	ធ្នូ ១៩
c. Amortization on external debts	(1,049.76)	...	(21.63)	(21.63)	-	-	-	-	-	-	-	-	-	-	-
2. DOMESTIC FINANCING	-	...	(9.10)	(9.10)	-	-	-	-	-	-	-	-	-	-	-
a. Net bank financing (monetary suvey)	-	...	(218.76)	(218.76)	-	-	-	-	-	-	-	-	-	-	-
- Government's deposits		...	(218.76)	(218.76)	-	-	-	-	-	-	-	-	-	-	-
e. \$Acc.-gap between NBC &MEF		...	209.66	209.66	-	-	-	-	-	-	-	-	-	-	-
Error		...	0.00	0.00	-	-	-	-	-	-	-	-	-	-	-
Exchange rate (R/\$)		...		4,011	-	-	-	-	-	-	-	-	-	-	-
Provincial revenue	1,482.61	10.68%	158.35	158.35	-	-	-	-	-	-	-	-	-	-	-
o.w. provincial tax revenue	1,351.62	6.16%	83.31	83.31	-	-	-	-	-	-	-	-	-	-	-
o.w. prov. non-tax revenue	38.58	7.01%	2.70	2.70	-	-	-	-	-	-	-	-	-	-	-
o.w. prov. Transfer from central	92.42	78.27%	72.34	72.34	-	-	-	-	-	-	-	-	-	-	-
Provincial expenditure	0.00	3379516%	74.65	74.65	-	-	-	-	-	-	-	-	-	-	-
o.w. wage and salary	0.00	1226969%	25.16	25.16	-	-	-	-	-	-	-	-	-	-	-
o.w. non-wage	0.00	58154518%	38.62	38.62	-	-	-	-	-	-	-	-	-	-	-
	0.00	11800216%	10.87	10.87	-	-	-	-	-	-	-	-	-	-	-
Provincial Balance		...	83.70	83.70	-	-	-	-	-	-	-	-	-	-	-
Contribution from casino and Lottery	229.02	0%	-	-	-	-	-	-	-	-	-	-	-	-	-

ថ្ងៃពុធ ៨រោច ខែមាឃ ឆ្នាំច សំរឹទ្ធិស័ក ព.ស. ២៥៦២
រាជធានីភ្នំពេញ ថ្ងៃទី២៧ ខែកុម្ភៈ ឆ្នាំ២០១៩

ថ្ងៃពុធ ៨រោច ខែមាឃ ឆ្នាំច សំរឹទ្ធិស័ក ព.ស. ២៥៦២
រាជធានីភ្នំពេញ ថ្ងៃទី២៧ ខែកុម្ភៈ ឆ្នាំ២០១៩

អគ្គនាយករង

ប្រធាននាយកដ្ឋាន

ប្រធានការិយាល័យ

អគ្គនាយកដ្ឋានគោលនយោបាយ

នាយកដ្ឋានស្ថិតិ និងវិភាគសេដ្ឋកិច្ច

ស្ថិតិហិរញ្ញវត្ថុសាធារណៈ

ចំណាយចរន្តតាមក្រសួង ឆ្នាំ ២០១៩/ CURRENT BUDGET EXPENDITURE BY MINISTRY 2019

គិតជាលានរៀល

	ច្បាប់ថវិកា ឆ្នាំ ២០១៩	ការអនុវត្ត / ច្បាប់	មករា ១៩	កុម្ភៈ ១៩	មីនា ១៩	មេសា ១៩	ឧសភា ១៩	មិថុនា ១៩	កក្កដា ១៩	សីហា ១៩	កញ្ញា ១៩	តុលា ១៩	វិច្ឆិកា ១៩	ធ្នូ ១៩
Total Current Expenditures	16,507,174	5.5%	915,524	915,524										
I. General Administration	3,232,616	12.9%	417,805	417,805										
01. Royal Palace	98,414	2.7%	2,679	2,679.39	-	-	-	-	-	-	-	-	-	-
02. National Assembly	183,783	27.7%	50,998	50,998.01	-	-	-	-	-	-	-	-	-	-
03. Senate	87,233	29.7%	25,936	25,936.36	-	-	-	-	-	-	-	-	-	-
04. Constitutional Council	11,523	35.2%	4,054	4,054.00	-	-	-	-	-	-	-	-	-	-
05.1 Council of Minister	415,409	1.0%	4,315	4,315.44	-	-	-	-	-	-	-	-	-	-
05.4 CDC	15,430	0.5%	83	82.55	-	-	-	-	-	-	-	-	-	-
07.2 Interior-Administration	206,039	9.8%	20,211	20,210.78	-	-	-	-	-	-	-	-	-	-
08. Relations Assembly and Inspections	41,556	2.5%	1,046	1,045.75	-	-	-	-	-	-	-	-	-	-
09. Foreign Affairs and Int'l Cooperation	148,849	11.2%	16,609	16,608.74	-	-	-	-	-	-	-	-	-	-
10. Economy and Finance	1,576,907	17.8%	281,006	281,006.02	-	-	-	-	-	-	-	-	-	-
14. Planning	91,138	2.7%	2,423	2,423.12	-	-	-	-	-	-	-	-	-	-
28. Urbanization and Construction	162,996	1.3%	2,072	2,071.98	-	-	-	-	-	-	-	-	-	-
30. National Election Committee	79,059	2.2%	1,708.41	1,708.41	-	-	-	-	-	-	-	-	-	-
31. National Audit Authority	14,905	4.3%	639	638.82	-	-	-	-	-	-	-	-	-	-
33.1 Anti-corruption Authority	45,856	4.1%	1,871	1,871.24	-	-	-	-	-	-	-	-	-	-
34. Public Function	53,519	4.0%	2,155	2,154.75	-	-	-	-	-	-	-	-	-	-
II. Defense and Security	4,057,518	6.5%	261,845	261,845	-	-	-	-	-	-	-	-	-	-
06. National Defense	2,416,438	6.8%	165,203	165,202.71	-	-	-	-	-	-	-	-	-	-
07.1 Interior - Public Security	1,490,709	6.3%	93,857	93,857.13	-	-	-	-	-	-	-	-	-	-
26. Justice	150,371	1.9%	2,785	2,785.46	0	0	0	0	0	0	0	0	0	0
III. Social Administrative	7,677,486	2.8%	212,252	212,252	-	-	-	-	-	-	-	-	-	-
11. Information	1,576,907	0.1%	2,180	2,180.22	-	-	-	-	-	-	-	-	-	-
12. Public Health	1,545,539	1.5%	22,587	22,586.76	-	-	-	-	-	-	-	-	-	-
16. Education, Youth and Sport	2,938,552	2.9%	85,950	85,950.28	-	-	-	-	-	-	-	-	-	-
18. Culture and Fine-Arts	180,146	1.4%	2,610	2,610.11	-	-	-	-	-	-	-	-	-	-
19. Environment	89,742	2.2%	1,936	1,936.44	-	-	-	-	-	-	-	-	-	-
21. Social Affair & Veteran	993,071	9.0%	89,725	89,724.76	-	-	-	-	-	-	-	-	-	-
23. Public Worship and Religion	68,706	2.3%	1,596	1,595.60	-	-	-	-	-	-	-	-	-	-
24. Woman Affairs	50,888	2.2%	1,120	1,120.41	-	-	-	-	-	-	-	-	-	-
32. Labour and Vocational Training	233,936	1.9%	4,547	4,547.34	-	-	-	-	-	-	-	-	-	-
IV. Economy Administrative	1,539,554	1.5%	23,621	23,621	-	-	-	-	-	-	-	-	-	-
05.3 Civil Aviation Secretariate	55,812	2.1%	1,144	1,144.25	-	-	-	-	-	-	-	-	-	-
13. Industry, Mines and Energy	89,430	1.0%	902	901.61	-	-	-	-	-	-	-	-	-	-
15. Commerce	148,168	3.3%	4,865	4,864.56	-	-	-	-	-	-	-	-	-	-
17. Agriculture, Forestry and Fishery	264,924	2.1%	5,649	5,648.94	-	-	-	-	-	-	-	-	-	-
20. Rural Development	183,295	0.9%	1,612	1,611.68	-	-	-	-	-	-	-	-	-	-
22. Posts and Telecommunications	73,964	1.8%	1,353	1,352.75	-	-	-	-	-	-	-	-	-	-
25. Public Works and Transport	409,345	1.0%	4,050	4,049.53	-	-	-	-	-	-	-	-	-	-
27. Tourism	98,065	1.2%	1,210	1,209.65	-	-	-	-	-	-	-	-	-	-
29. Water Resources and Meteorology	159,188	1.0%	1,583	1,583.41	-	-	-	-	-	-	-	-	-	-
35. Industry and Handicrafts	57,363	2.2%	1,255	1,254.78	-	-	-	-	-	-	-	-	-	-
V. Miscellaneous		#DIV/0!			-	-	-	-	-	-	-	-	-	-
99.Unexpect Expenditure		#DIV/0!			-	-	-	-	-	-	-	-	-	-

NOTE



TOFE report was issued based on temporary data as following:

1. Data on Revenue at National level was received on February 26, 2019
2. Data on Expenditure at National Level was received February 25, 2019
3. Data on Loan and Grant of multilateral and bilateral was retrieved on February 16, 2019
4. Financial Operation Data (Credit Bank) was received on February 20, 2019

TOFE report will be updated in the next released.

