

**Brief Report**  
**On**  
**State Budget Implementation in February 2017**



**I. Introduction**

Cambodia's economy remained robust for early 2017 which supported by garment, real estates, and tourism sector. With momentum growth and favorable macroeconomic management, fiscal consolidation has been improved substantially given the current administrative reforms, the implementation of Revenue Mobilization Strategy and Public Financial Reform Management Programme.

**II. Revenue Performance**

In February 2017, Central government has achieved total domestic revenue of KHR 1,422.54 billion, increased by 34.96 percent compared to February 2016 due to the rise in income tax, tax on profit, land and property tax, VAT and excise.

Overall, as of February 2017, total domestic revenue has reached KHR 2,459.12 billion which accounted for 0.95 percent low than budget law or grew by 28.59 percent compared to the same period of 2016, in which the revenue collection from General Department of Taxation increased by 89.83 percent, Department of Non-Tax Revenue increased by 12.27 percent and Department of State Property increased by 21.33 percent. By tax type, total tax revenue and non-tax revenue increased respectively by 30.73 percent and 10.44 percent due to the rise in direct tax by 84.50 percent, indirect tax 30.41 percent and some non-tax revenue type such as fishery and tourism.

**III. Expenditure Performance**

In February 2017, expenditure of central government has achieved KHR 891.35 billion, increased by 3.74 percent compared to February 2016, of which current expenditure has reached KHR 845.54 billion, rose by 48.80 percent due to the rise in wage and non-wage expenditure.

As of February 2017, total expenditure has reached KHR 1,394.91 billion, which accounted for 9.52 percent lower than budget law or decreased by 8.98 percent compared to

previous year due to the slow disbursement of capital expenditure. In addition, the expenditure by Programme Budgeting Ministries has shown to have better performance than that of the previous year. This better performance of expenditure reflects the improvement of the spending procedures and clearer understanding of the procedures and guidelines.

#### **IV. Budget Balance**

In February 2017, the current budget balance has achieved surplus of KHR 646.66 billion and overall budget balance has achieved surplus of KHR 600.85 billion. Overall, in the first 2 months of 2016, current budget balance and overall budget balance have achieved surplus of KHR 1,166.78 billion and KHR 1,063.00 billion, respectively.

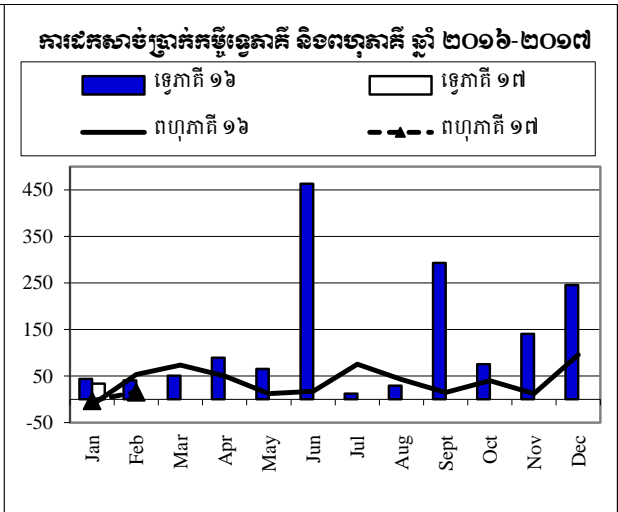
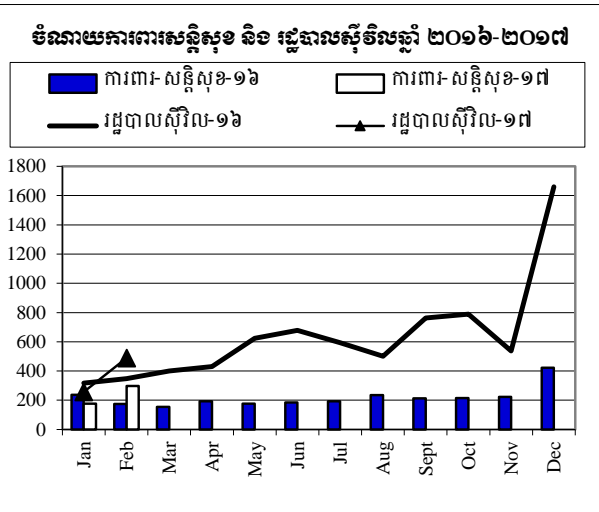
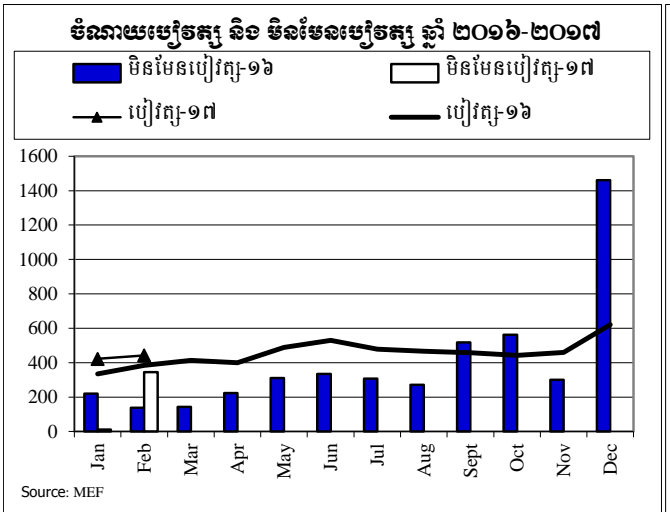
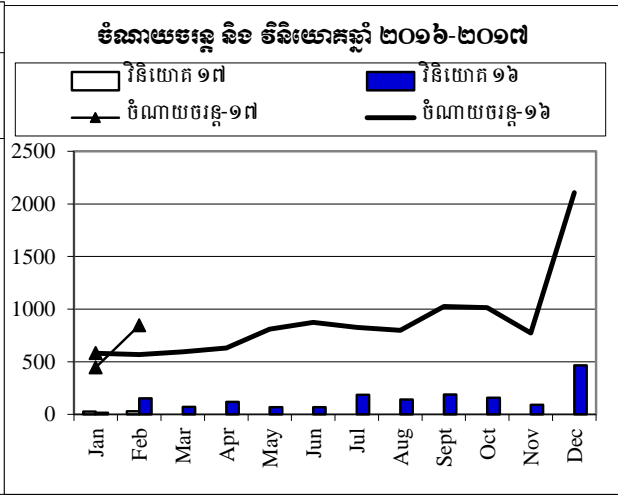
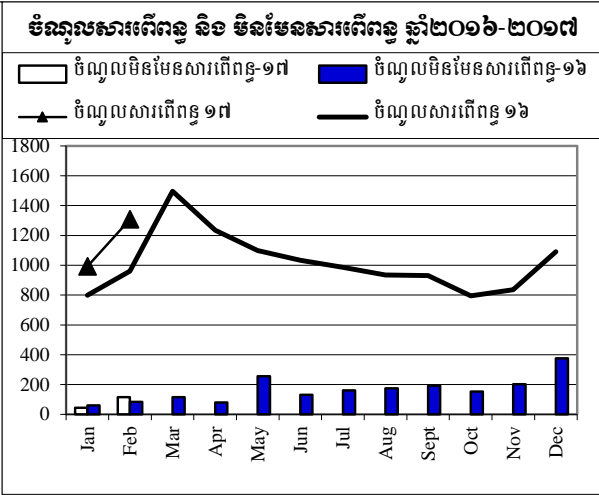
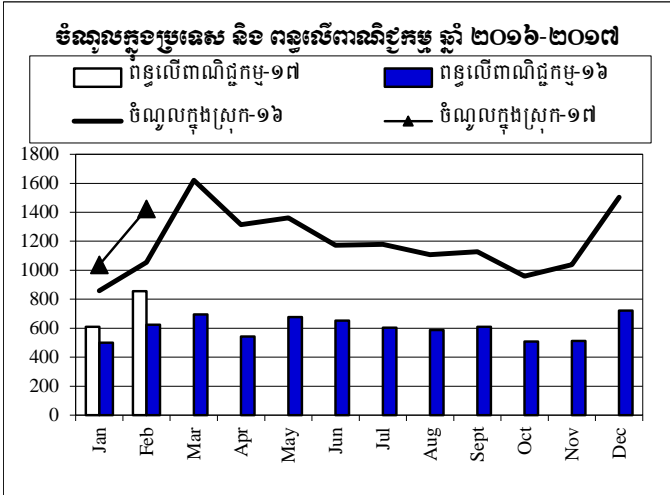
#### **V. Conclusion**

As a result, as of February 2017, the budget implementation has improved notably as revenue collection has achieved its target and expenditure has a better performance than the previous year, although it is lower than its target. This improvement is driven by the concerted effort of Ministry of Economy and Finance in the implementation of Revenue Mobilization Strategy, Public Finance Management Reform Programme.



# ការប្រៀបធៀបចំណូល និង ចំណាយ ឆ្នាំ ២០១៦-២០១៧

ភិក្ខុជា ម៉ែនាណក្រែល







**តារាងប្រតិបត្តិការហិរញ្ញវត្ថុឆ្នាំ ២០១៧ TOFE: BUDGET IMPLEMENTATION FOR 2017**

Billions of Riels	2017 C.B.L.	Implementation 2 months =16.67%	Jan-17	Feb-17	Mar-17	Apr-17	May-17	Jun-17	Jul-17	Aug-17	Sep-17	Oct-17	Nov-17	Dec-17
e. \$Acc.-gap between NBC &MEF		151.48	(13.32)	164.80		-	-	-	-	-	-	-	-	-
<b>3. OUTSTANDING OPERATIONS</b>		<b>(1,023.14)</b>	<b>(154.73)</b>	<b>(868.41)</b>		-	-	-	-	-	-	-	-	-
Error		0.00	0.00	0.00		-	-	-	-	-	-	-	-	-
<i>Memorandum Item :</i>		-												
Exchange rate (R/\$)			4,035	4,004		-	-	-	-	-	-	-	-	-
Provincial revenue	-	#DIV/0!	<b>156.48</b>	<b>45.82</b>	<b>110.66</b>	-	-	-	-	-	-	-	-	-
o.w. provincial tax revenue	-	#DIV/0!	94.31	43.08	51.23	-	-	-	-	-	-	-	-	-
o.w. prov. non-tax revenue	-	#DIV/0!	6.74	2.34	4.41	-	-	-	-	-	-	-	-	-
o.w. prov. Transfer from central	-	#DIV/0!	55.43	0.41	55.02	-	-	-	-	-	-	-	-	-
Provincial Balance			156.48	45.82	110.66	-	-	-	-	-	-	-	-	-
Contribution from casino and Lottery			16.95	5.17	11.78	-	-	-	-	-	-	-	-	-
10 Ministry Spending by Program	5,394.27	10.00%	539.21	146.49	392.72	-	-	-	-	-	-	-	-	-

ភ្នំពេញ ថ្ងៃទី ខែមេសា ឆ្នាំ ២០១៧

**អគ្គនាយក នៃអគ្គនាយកដ្ឋាន**  
**គោលនយោបាយសេដ្ឋកិច្ច និងហិរញ្ញវត្ថុសាធារណៈ**

**ប្រធាននាយកដ្ឋានស្ថិតិ**

**ប្រធានការិយាល័យ**  
**ស្ថិតិហិរញ្ញវត្ថុសាធារណៈ**

**ហង់ ច័ន្ទ**





General Department of Economics and Public Finance Policy

Statistic Department

## *Government Finance Statistics Report (GFS)*

### STATISTICAL TABLES

**Level of government:**  
**Units of currency / Year ending:**

**Budgetary Central Government**

**Millions of Riels, Fiscal year ends December 31**

**Nature of the data and  
accounting method:**

	Budgetary central government	Extra- budgetary units	Social security funds	Central government	State governments	Local governments	NFPCs
Final							
Preliminary	x						
Forecast							
C or A?	Non-Cash						

*Note:*  
*C to indicate cash  
data and*

***Non-Cash***

**Statement I: Statement of Government Operations**  
**Table 1: Revenue**  
**Table 2: Expense**  
**Table 3: Transactions in Assets and Liabilities**

Reference: *Government Finance Statistics Manual 2001 (GFSM 2001)*



តារាងប្រតិបត្តិការហិរញ្ញវត្ថុរដ្ឋាភិបាល

គិតជាលានរៀល  
Million Riels

Statement of Government Operations

តារាងប្រតិបត្តិការហិរញ្ញវត្ថុរដ្ឋាភិបាល

STATEMENT OF GOVERNMENT OPERATIONS	2017	BL 2017	% of BL2017	Jan-17	Feb-17	Mar-17	Apr-17	May-17	Jun-17	Jul-17	Aug-17	Sep-17	Oct-17	Nov-17	Dec-17
Accounting method:	Non Cash	Non Cash	Non Cash	Non Cash	Non Cash	Non Cash	Non Cash	Non Cash	Non Cash	Non Cash	Non Cash	Non Cash	Non Cash	Non Cash	Non Cash
<b>TRANSACTIONS AFFECTING NET WORTH:</b>															
<b>A1 Revenue</b> .....	<b>2,457,103</b>	<b>16,189,307.0</b>	<b>15.18%</b>	<b>1,036,579.9</b>	<b>1,420,523.0</b>	<b>0.0</b>	<b>0.0</b>	<b>0.0</b>	<b>0.0</b>	<b>0.0</b>	<b>0.0</b>	<b>0.0</b>	<b>0.0</b>	<b>0.0</b>	<b>0.0</b>
A11 Taxes .....	2,301,881	13,386,180.1	17.20%	993,255.0	1,308,625.8	0.0	0.0	0.0	0.0	0.0	0.0	0.0	0.0	0.0	0.0
A12 Social contributions .....	-	0.0		0.0	0.0	0.0	0.0	0.0	0.0	0.0	0.0	0.0	0.0	0.0	0.0
A13 Grants .....	237	687,838.0	0.03%	237.1	0.0	0.0	0.0	0.0	0.0	0.0	0.0	0.0	0.0	0.0	0.0
A14 Other revenue .....	154,985	2,115,288.9	7.33%	43,087.9	111,897.2	0.0	0.0	0.0	0.0	0.0	0.0	0.0	0.0	0.0	0.0
<b>A2 Expense</b> .....	<b>1,192,010</b>	<b>12,262,844.6</b>	<b>9.72%</b>	<b>445,341.9</b>	<b>746,668.1</b>	<b>0.0</b>	<b>0.0</b>	<b>0.0</b>	<b>0.0</b>	<b>0.0</b>	<b>0.0</b>	<b>0.0</b>	<b>0.0</b>	<b>0.0</b>	<b>0.0</b>
A21 Compensation of employees .....	743,265	6,041,355.5	12.30%	361,405.3	381,859.4	0.0	0.0	0.0	0.0	0.0	0.0	0.0	0.0	0.0	0.0
A22 Use of goods and services .....	51,891	2,847,163.0	1.82%	5,386.1	46,504.9	0.0	0.0	0.0	0.0	0.0	0.0	0.0	0.0	0.0	0.0
A23 Consumption of fixed capital .....	-	0.0		0.0	0.0	0.0	0.0	0.0	0.0	0.0	0.0	0.0	0.0	0.0	0.0
A24 Interest .....	66,568	342,294.0	19.45%	11,939.6	54,628.8	0.0	0.0	0.0	0.0	0.0	0.0	0.0	0.0	0.0	0.0
A25 Subsidies .....	-	10,920.0	0.00%	0.0	0.0	0.0	0.0	0.0	0.0	0.0	0.0	0.0	0.0	0.0	0.0
A26 Grants .....	167,345	1,116,697.4	14.99%	203.9	167,140.7	0.0	0.0	0.0	0.0	0.0	0.0	0.0	0.0	0.0	0.0
A27 Social benefits .....	133,931	1,297,286.7	10.32%	62,973.1	70,958.3	0.0	0.0	0.0	0.0	0.0	0.0	0.0	0.0	0.0	0.0
A28 Other expense .....	29,010	607,128.0	4.78%	3,434.0	25,576.0	0.0	0.0	0.0	0.0	0.0	0.0	0.0	0.0	0.0	0.0
<b>GOB Gross operating balance (1-2+23+NOBz)</b> .....	<b>1,265,093</b>	<b>3,926,462.4</b>	<b>32.22%</b>	<b>591,238.0</b>	<b>673,855.0</b>	<b>0.0</b>	<b>0.0</b>	<b>0.0</b>	<b>0.0</b>	<b>0.0</b>	<b>0.0</b>	<b>0.0</b>	<b>0.0</b>	<b>0.0</b>	<b>0.0</b>
<b>NOB Net operating balance (1-2+NOBz)<sup>cl</sup></b> .....	<b>1,265,093</b>	<b>3,926,462.4</b>	<b>32.22%</b>	<b>591,238.0</b>	<b>673,855.0</b>	<b>0.0</b>	<b>0.0</b>	<b>0.0</b>	<b>0.0</b>	<b>0.0</b>	<b>0.0</b>	<b>0.0</b>	<b>0.0</b>	<b>0.0</b>	<b>0.0</b>
<b>TRANSACTIONS IN NONFINANCIAL ASSETS:</b>															
<b>A31 Net Acquisition of Nonfinancial Assets</b> .....	<b>202,905</b>	<b>6,748,672.9</b>	<b>3.01%</b>	<b>58,223.1</b>	<b>144,681.5</b>	<b>0.0</b>	<b>0.0</b>	<b>0.0</b>	<b>0.0</b>	<b>0.0</b>	<b>0.0</b>	<b>0.0</b>	<b>0.0</b>	<b>0.0</b>	<b>0.0</b>
A311 Fixed assets .....	202,905	6,748,672.9	3.01%	58,223.1	144,681.5	0.0	0.0	0.0	0.0	0.0	0.0	0.0	0.0	0.0	0.0
A312 Change in inventories .....	-	0.0		0.0	0.0	0.0	0.0	0.0	0.0	0.0	0.0	0.0	0.0	0.0	0.0
A313 Valuables .....	-	0.0		0.0	0.0	0.0	0.0	0.0	0.0	0.0	0.0	0.0	0.0	0.0	0.0
A314 Nonproduced assets .....	-	0.0		0.0	0.0	0.0	0.0	0.0	0.0	0.0	0.0	0.0	0.0	0.0	0.0
<b>NLB Net lending / borrowing (1-2+NOBz-31)</b> .....	<b>1,062,188</b>	<b>-2,822,210.5</b>	<b>-37.64%</b>	<b>533,014.9</b>	<b>529,173.5</b>	<b>0.0</b>	<b>0.0</b>	<b>0.0</b>	<b>0.0</b>	<b>0.0</b>	<b>0.0</b>	<b>0.0</b>	<b>0.0</b>	<b>0.0</b>	<b>0.0</b>
<b>TRANSACTIONS IN FINANCIAL ASSETS AND LIABILITIES (FINANCING):</b>															
<b>A32 Net acquisition of financial assets</b> .....	<b>2,259,060</b>	<b>-148,431.0</b>	<b>-1521.96%</b>	<b>292,451.6</b>	<b>1,966,608.7</b>	<b>0.0</b>	<b>0.0</b>	<b>0.0</b>	<b>0.0</b>	<b>0.0</b>	<b>0.0</b>	<b>0.0</b>	<b>0.0</b>	<b>0.0</b>	<b>0.0</b>
A321 Domestic .....	2,259,060	-148,431.0	-1521.96%	292,451.6	1,966,608.7	0.0	0.0	0.0	0.0	0.0	0.0	0.0	0.0	0.0	0.0
A322 Foreign .....	-	0.0		0.0	0.0	0.0	0.0	0.0	0.0	0.0	0.0	0.0	0.0	0.0	0.0
<b>A33 Net incurrence of liabilities</b> .....	<b>181,128</b>	<b>3,181,205.0</b>	<b>5.69%</b>	<b>-371,069.9</b>	<b>552,197.4</b>	<b>0.0</b>	<b>0.0</b>	<b>0.0</b>	<b>0.0</b>	<b>0.0</b>	<b>0.0</b>	<b>0.0</b>	<b>0.0</b>	<b>0.0</b>	<b>0.0</b>
A331 Domestic .....	147,099	0.0		-416,453.0	563,552.1	0.0	0.0	0.0	0.0	0.0	0.0	0.0	0.0	0.0	0.0
A332 Foreign .....	34,028	3,181,205.0	1.07%	45,383.1	-11,354.7	0.0	0.0	0.0	0.0	0.0	0.0	0.0	0.0	0.0	0.0

## **NOTE**



For February 2017, TOFE report was compiled without the data of Central and Provincial Balance ( It will be put into TOFE in the next released). TOFE was issued based on temporary data as following:

1. Data on Revenue at National and Sub-national level was received on March 12, 2017
2. Data on Expenditure at National Level and Sub-national level was received on March 10, 2017
3. Data on Loan and Grant of both multilateral and bilateral was retrieved on March 23, 2017
4. Financial Operation Data (Credit Bank) was received on March 10, 2017

TOFE report will be updated in the next released.

